

District I
PO Box 1980, Hobbs, NM 88241-1980
District II
PO Drawer DD, Artesia, NM 88211-0719
District III
1000 Rio Brazos Rd., Aztec, NM 87410
District IV
PO Box 2088, Santa Fe, NM 87504-2088

State of New Mexico
Energy, Minerals & Natural Resources Department

OIL CONSERVATION DIVISION
PO Box 2088
Santa Fe, NM 87504-2088

Form C-101
Revised February 21, 1994
Instructions on back
Submit to Appropriate District Office
State Lease - 6 Copies
Fee Lease - 5 Copies

☐ AMENDED REPORT

APPLICATION FOR PERMIT TO DRILL, RE-ENTER, DEEPEN, PLUGBACK, OR ADD A ZONE

Operator Name and Address. GREAT WESTERN ONSHORE INC. 1111 Bagby, Suite 1700 Houston, Texas 77002-2595		OGRID Number 009346
		API Number 30-025-33106
Property Code 17554	Property Name State 15	Well No. 1-16

7 Surface Location

UL or lot no.	Section	Township	Range	Lot Ida	Feet from the	North/South line	Feet from the	East/West line	County
K	15	11S	38E		2,188'	South	2,256'	West	Lea

8 Proposed Bottom Hole Location If Different From Surface

UL or lot no.	Section	Township	Range	Lot Ida	Feet from the	North/South line	Feet from the	East/West line	County
Proposed Pool 1 East Echols Devonian					Proposed Pool 2				

Work Type Code	Well Type Code	Cable/Rotary	Lease Type Code	Ground Level Elevation
N	0	Rotary	S	3,887'
Multiple	Proposed Depth	Formation	Contractor	Spud Date
No	12,300'	Siluro-Devonian	Hondo Drilling	Sept. 22, 1995

21 Proposed Casing and Cement Program

Hole Size	Casing Size	Casing weight/foot	Setting Depth	Sacks of Cement	Estimated TOC
17-1/2"	13-3/8"	48#	400'	400 sxs.	Surface
12-1/4"	8-5/8"	32# & 24#	4,450'	1500 sxs.	Surface
7-7/8"	5-1/2"	17#	12,300' TD	500 sxs.	4,000'

Describe the proposed program. If this application is to DEEPEN or PLUG BACK give the data on the present productive zone and proposed new productive zone. Describe the blowout prevention program, if any. Use additional sheets if necessary.

(See Attachment)

Permit Expires 6 Months From Approval
Date 10/18/95

I hereby certify that the information given above is true and complete to the best of my knowledge and belief.

Signature:

Lupe Vasquez

Printed name:

Lupe Vasquez

Title:

Production Tech

Date:

9-8-95

Phone:

ext.227
713/739-8400

OIL CONSERVATION DIVISION

Approved by:

ORIGINAL SIGNATURE: J. W. SEXTON

Title:

SEXTON

Approval Date:

SEP 18 1995

Expiration Date:

Conditions of Approval:

Attached ☐

C-101 Instructions

Measurements and dimensions are to be in feet/inches. Well locations will refer to the New Mexico Principal Meridian.

IF THIS IS AN AMENDED REPORT CHECK THE BOX LABELED "AMENDED REPORT" AT THE TOP OF THIS DOCUMENT.

- | | |
|--|---|
| <p>1 Operator's OGRID number. If you do not have one it will be assigned and filled in by the District office.</p> <p>2 Operator's name and address</p> <p>3 API number of this well. If this is a new drill the OCD will assign the number and fill this in.</p> <p>4 Property code. If this is a new property the OCD will assign the number and fill it in.</p> <p>5 Property name that used to be called 'well name'</p> <p>6 The number of this well on the property.</p> <p>7 The surveyed location of this well New Mexico Principal Meridian NOTE: If the United States government survey designates a Lot Number for this location use that number in the 'UL or lot no.' box. Otherwise use the OCD Unit Letter.</p> <p>8 The proposed bottom hole location of this well at TD</p> <p>9 and 10 The proposed pool(s) to which this well is being drilled.</p> <p>11 Work type code from the following table:
 N New well
 E Re-entry
 D Drill deeper
 P Plugback
 A Add a zone</p> <p>12 Well type code from the following table:
 O Single oil completion
 G Single gas completion
 M Multiple completion
 I Injection well
 S SWD well
 W Water supply well
 C Carbon dioxide well</p> <p>13 Cable or rotary drilling code
 C Propose to cable tool drill
 R Propose to rotary drill</p> <p>14 Lease type code from the following table:
 S State
 P Private</p> <p>15 Ground level elevation above sea level</p> <p>16 Intend to multiple complete? Yes or No</p> <p>17 Proposed total depth of this well</p> <p>18 Geologic formation at TD</p> <p>19 Name of the intended drilling company if known.</p> | <p>20 Anticipated spud date.</p> <p>21 Proposed hole size ID inches, proposed casing OD inches, casing weight in pounds per foot, setting depth of the casing or depth and top of liner, proposed cementing volume, and estimated top of cement</p> <p>22 Brief description of the proposed drilling program and BOP program. Attach additional sheets if necessary.</p> <p>23 The signature, printed name, and title of the person authorized to make this report. The date this report was signed and the telephone number to call for questions about this report.</p> |
|--|---|

DISTRICT I
P. O. Box 1980
Hobbs, NM 88241-1980

State of New Mexico
Energy, Minerals, and Natural Resources Department

Form C-102
Revised 02-10-94

Instructions on back

DISTRICT II
P. O. Drawer DD
Artesia, NM 88211-0719

OIL CONSERVATION DIVISION
P. O. Box 2088
Santa Fe, New Mexico 87504-2088

Submit to the Appropriate
District Office
State Lease - 4 copies
Fee Lease - 3 copies

DISTRICT III
1000 Rio Brazos Rd.
Aztec, NM 87410

☐ AMENDED REPORT

DISTRICT IV
P. O. Box 2088
Santa Fe, NM 87507-2088

WELL LOCATION AND ACREAGE DEDICATION PLAT

¹ API Number 30-025-33106	² Pool Code 20900	³ Pool Name East Echols Devonian
⁴ Property Code 17554	⁵ Property Name STATE 15	⁶ Well Number 1-15
⁷ OGRID No. 009346	⁸ Operator Name GREAT WESTERN ONSHORE INC.	⁹ Elevation 3887'

¹⁰ SURFACE LOCATION

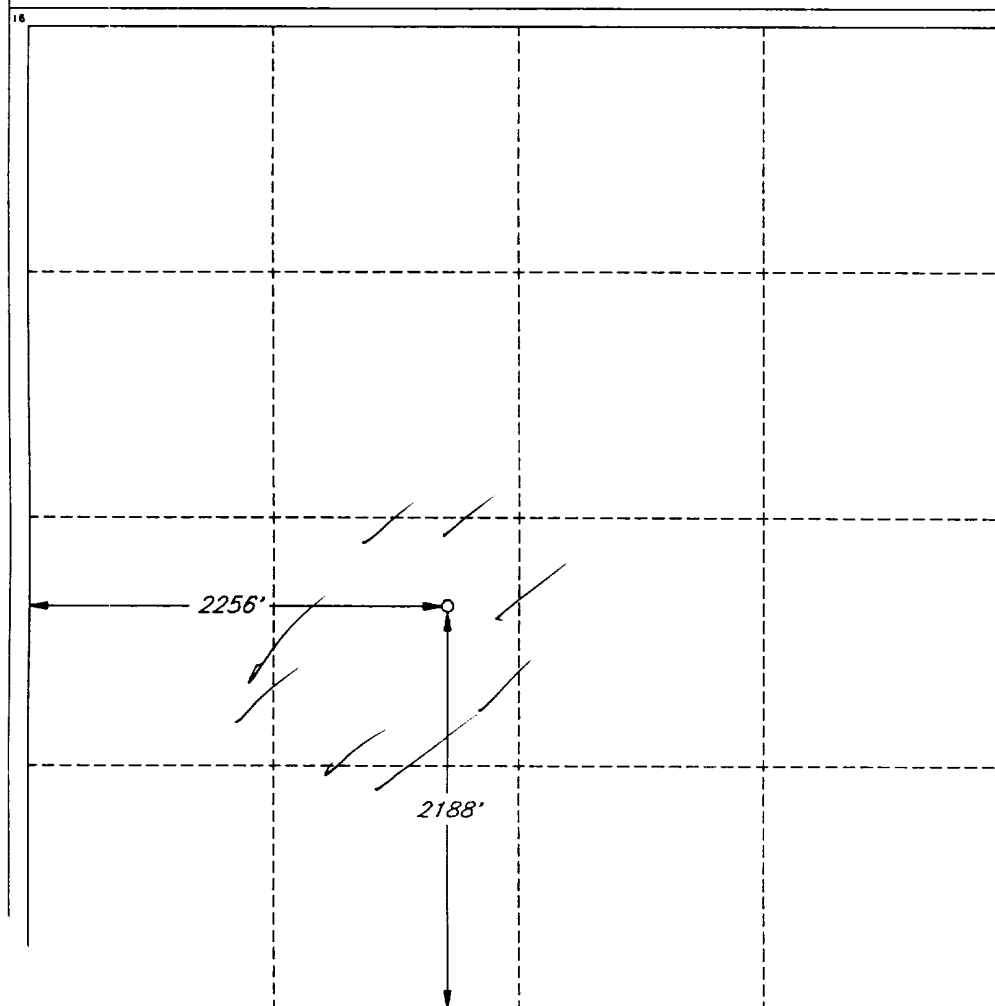
UL or lot no. K	Section 15	Township 11 SOUTH	Range 38 EAST, N.M.P.M.	Lot Ida	Feet from the 2188'	North/South line SOUTH	Feet from the 2256'	East/West line WEST	County LEA
--------------------	---------------	----------------------	----------------------------	---------	------------------------	---------------------------	------------------------	------------------------	---------------

¹¹ BOTTOM HOLE LOCATION IF DIFFERENT FROM SURFACE

UL or lot no.	Section	Township	Range	Lot Ida	Feet from the	North/South line	Feet from the	East/West line	County
---------------	---------	----------	-------	---------	---------------	------------------	---------------	----------------	--------

¹² Dedicated Acres	¹³ Joint or Infill	¹⁴ Consolidation Code	¹⁵ Order No.
-------------------------------	-------------------------------	----------------------------------	-------------------------

NO ALLOWABLE WELL BE ASSIGNED TO THIS COMPLETION UNTIL ALL INTERESTS HAVE BEEN
CONSOLIDATED OR A NON-STANDARD UNIT HAS BEEN APPROVED BY THE DIVISION



OPERATOR CERTIFICATION

I hereby certify that the information
contained herein is true and complete
to the best of my knowledge and belief.

Signature *Lupe Vasquez*

Printed Name

Lupe Vasquez

Title

Production Tech

Date

9-8-95

SURVEYOR CERTIFICATION

I hereby certify that the well
location shown on this plat was
plotted from field notes of actual
surveys made by me or under
my supervision, and that the
same is true and correct to the
best of my belief.

Date of Survey

AUGUST 31, 1995

Signature and Seal of
Professional Surveyor

V. L. Bezner

Certificate No.

V. L. BEZNER R.P.S. #7920

JOB #41230 / 145 SE / V.H.B.

New Mexico Oil Conservation Division
C-102 Instructions

IF THIS IS AN AMENDED REPORT, CHECK THE BOX LABELED
"AMENDED REPORT" AT THE TOP OF THIS DOCUMENT.

Surveyors shall use the latest United States government survey or dependent resurvey. Well locations will be in reference to the New Mexico Principal Meridian. If the land is not surveyed contact the appropriate OCD district office. Independent subdivision surveys will not be acceptable.

1. The OCD assigned API number for this well
2. The pool code for this (proposed) completion
3. The pool name for this (proposed) completion
4. The property code for this (proposed) completion
5. The property name (well name) for this (proposed) completion
6. The well number for this (proposed) completion
7. Operator's OGRID number
8. The operator's name
9. The ground level elevation of this well
10. The surveyed surface location of this well measured from the section lines. NOTE: If the United States government survey designates a Lot Number for this location use that number in the "UL or lot no." box. Otherwise use the OCD unit letter.
11. Proposed bottom hole location. If this is a horizontal hole indicate the location of the end of the hole.
12. The calculated acreage dedicated to this completion to nearest hundredth of an acre
13. Put a Y if more than one completion will be sharing this same acreage or N if this is the only completion on this acreage
14. If more than one lease of different ownership has been dedicated to the well show the consolidation code from the following table:
C Communitization
U Unitization
F Forced pooling
O Other
P Consolidation pending

NO ALLOWABLE WILL BE ASSIGNED TO THIS COMPLETION UNTIL ALL INTERESTS HAVE BEEN CONSOLIDATED OR A NON-STANDARD UNIT HAS BEEN APPROVED BY THE DIVISION!

15. Write in the OCD order(s) approving a non-standard location, non-standard spacing, or directional or horizontal drilling

16. This grid represents a standard section. You may superimpose a non-standard section over this grid. Outline the dedicated acreage and the separate leases within that dedicated acreage. Show the well surface location and bottom hole location, if it is directionally drilled, with the dimensions from the section lines in the dimensions from the section lines in the cardinal directions. (Note: A legal location is determined from the perpendicular distance to the edge of the tract.) If this is a high angle or horizontal hole show that portion of the well bore that is open within this pool.

Show all lots, lot numbers, and their respective acreage.

If more than one lease has been dedicated to this completion, outline each one and identify the ownership as to both working interest and royalty.

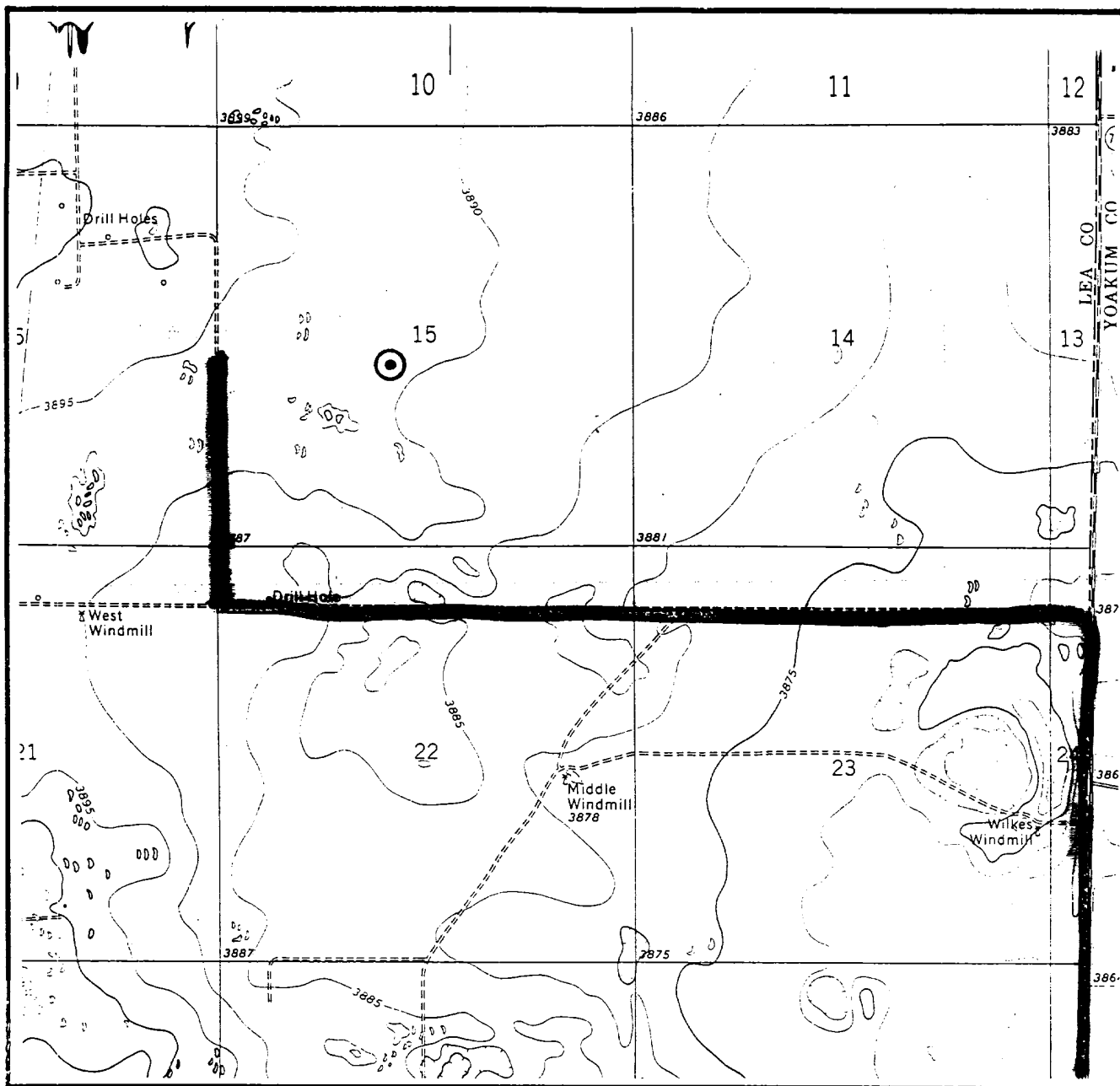
17. The signature, printed name, and title of the person authorized to make this report and the date this document was signed.
18. The Registered surveyors certification. This section does not have to be completed if this form has been previously accepted by the OCD and is being filed for a change or pool or dedicated acreage

RECEIVED

SEP 11 1995

OCD RECORDS
OFFICE

LOCATION & ELEVATION VERIFICATION MAP



SCALE : 1" = 2000'

CONTOUR INTERVAL 5'

SECTION 15 TWP 11-S RGE 38-E

SURVEY NEW MEXICO PRINCIPAL MERIDIAN

COUNTY LEA STATE NM

DESCRIPTION 2188' FSL & 2256' FWL

ELEVATION 3887'

OPERATOR GREAT WESTERN ONSHORE INC.

LEASE STATE #1-15

U.S.G.S. TOPOGRAPHIC MAP

BRONCO, NEW MEXICO

SCALED LAT. N 33°21'52"

LONG. W 103°05'09"

This location has been very carefully staked on the ground according to the best official survey records, maps, and other data available to us.

Review this plot and notify us immediately of any possible discrepancy.

TOPOGRAPHIC LAND SURVEYORS

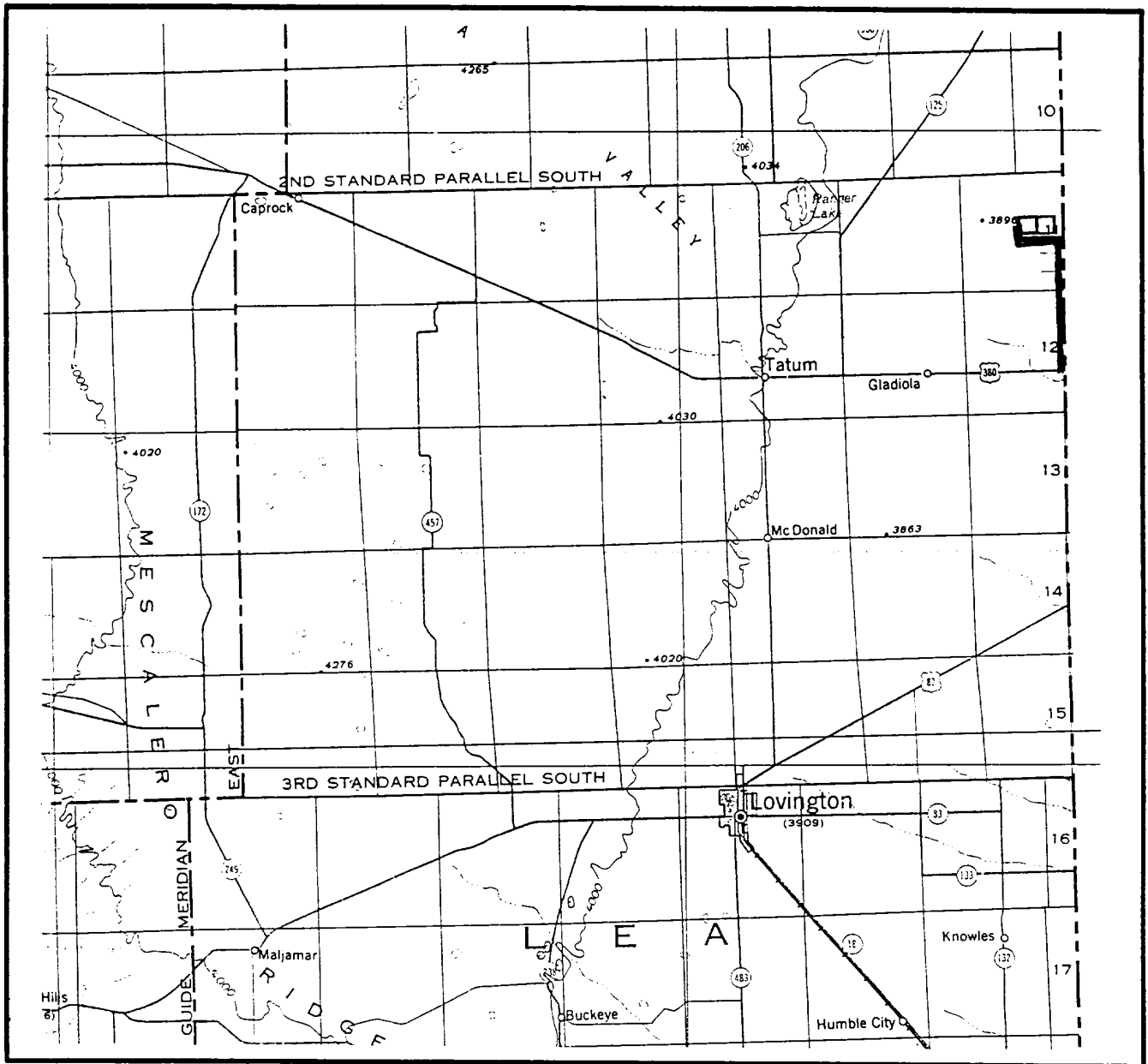
Surveying & Mapping for the Oil & Gas Industry

1307 N. HOBART
PAMPA, TX. 79065
(800) 658-6382

6709 N. CLASSEN BLVD.
OKLAHOMA CITY, OK. 73116
(800) 654-3218

2903 N. BIG SPRING
MIDLAND, TX. 79705
(800) 767-1007

VICINITY MAP



SECTION 15 TWP 11-S RGE 38-E
 SURVEY NEW MEXICO PRINCIPAL MERIDIAN
 COUNTY LEA STATE NM
 DESCRIPTION 2188' FSL & 2256' FWL

OPERATOR GREAT WESTERN ONSHORE INC.
 LEASE STATE #1-15

DISTANCE & DIRECTION FROM FM. 769 @ BRONCO, GO
NORTH 6.9 MILES ON FM. 769, THENCE WEST 2.1 MILES
ON LEASE ROAD, THENCE NORTH 0.6 MILE ON LEASE
ROAD TO A POINT ±2500' WEST OF THE LOCATION.

This location has been very carefully staked on the ground according to the best official survey records, maps, and other data available to us.
 Review this plat and notify us immediately of any possible discrepancy.

TOPOGRAPHIC LAND SURVEYORS

Surveying & Mapping for the Oil & Gas Industry

1307 N. HOBART
 PAMPA, TX. 79065
 (800) 658-6382

6709 N. CLASSEN BLVD.
 OKLAHOMA CITY, OK. 73116
 (800) 654-3219

2903 N. BIG SPRING
 MIDLAND, TX. 79705
 (800) 767-1653



Great Western Onshore Inc.

PROPOSED DRILLING PROGRAM

STATE 1-15 LEA COUNTY, NEW MEXICO

- 1.) Construct 300' x 300' drilling pad with 150' x 150' reserve pit lined with 6 mil polyethylene plastic.
- 2.) Move in and rig up drilling contractor.
- 3.) Drill 17-1/2" hole to 400' +/- (actual depth to conform with regulatory requirements) using freshwater mud (8.5 - 9.0 ppg and 32-36 sec/1000 ml funnel viscosity).
- 4.) Set 13-3/8", 48 lb/ft., H-40, STC casing at 400'. Separate guide shoe and float collar with (2) joints of 13-3/8" casing. Install centralizers at 80 foot spacing to surface. Cement casing to surface using 400 sacks Class "C" cement (Annular volume + 100% excess) mixed at 14.8 ppg (1.34 cu. ft./sack).
- 5.) Wait on cement for 8 hours.
- 6.) Cut-off casing, install 13-3/8" SOW x 13-5/8" - 3000# MWP casinghead with 3000# MWP ball valves on outlets.
- 7.) Install 11" - 3000# MWP double ram BOP (Pipe rams on bottom, blind rams on top) and test same to 500 psig.
- 8.) Drill 12-1/4" hole to 4,450' using native mud (9.3 - 10.2 ppg, 32-36 sec. viscosity). Run fluid caliper at 4,300' to calculate annular cement volume for 8-5/8" casing. A basic drilling rig H₂S safety package (monitors @ pits, drill floor, shale shaker, and bell nipple) will be installed and operational prior to drilling into the San Andres at 4,315'.
- 9.) Set 8-5/8" 32# & 24# casing to 4,450', separating float shoe and float collar with (2) joints of 32# casing. Install bowspring centralizers of first (6) joints. Cement 8-5/8" casing to surface using 1500 sacks "C" Lite cement mixed at 12.3 ppg, tail in lead slurry with 300 sacks of Class "C" cement mixed at 14.8 ppg. (Exact volume of lead slurry to be adjusted to fluid caliper volume + 15%).
- 10.) Set slips on 8-5/8" casing, cut-off casing and MU 13-5/8" - 3000# MWP x 11" - 3000# MWP casing spool equipped with (2) 3000# MWP ball valves. NU and test rig BOP to 250 psig and to 75% of internal yield strength of casing (or 3000 psi, whichever is lesser). Waiting on cement time will be 12 hours.

PROPOSED DRILLING PROGRAM

***STATE 1-15
LEA COUNTY, NEW MEXICO***

Page Two

- 11.) Drill 7-7/8" hole to 12,300' using freshwater to circulate the reserve pit from 4,450' to 9,000'. The interval from 9,000' to Total Depth will be drilled with mud weighing 8.6 - 9.7 ppg having a viscosity of 36-42 sec., circulating through the rig mud pit system.
- 12.) At total depth, the wellbore will be logged with GR/CNL/FDC/DIL/ML.

RECEIVED

SEP 11 1985

JOHN HOBBS
OFFICE

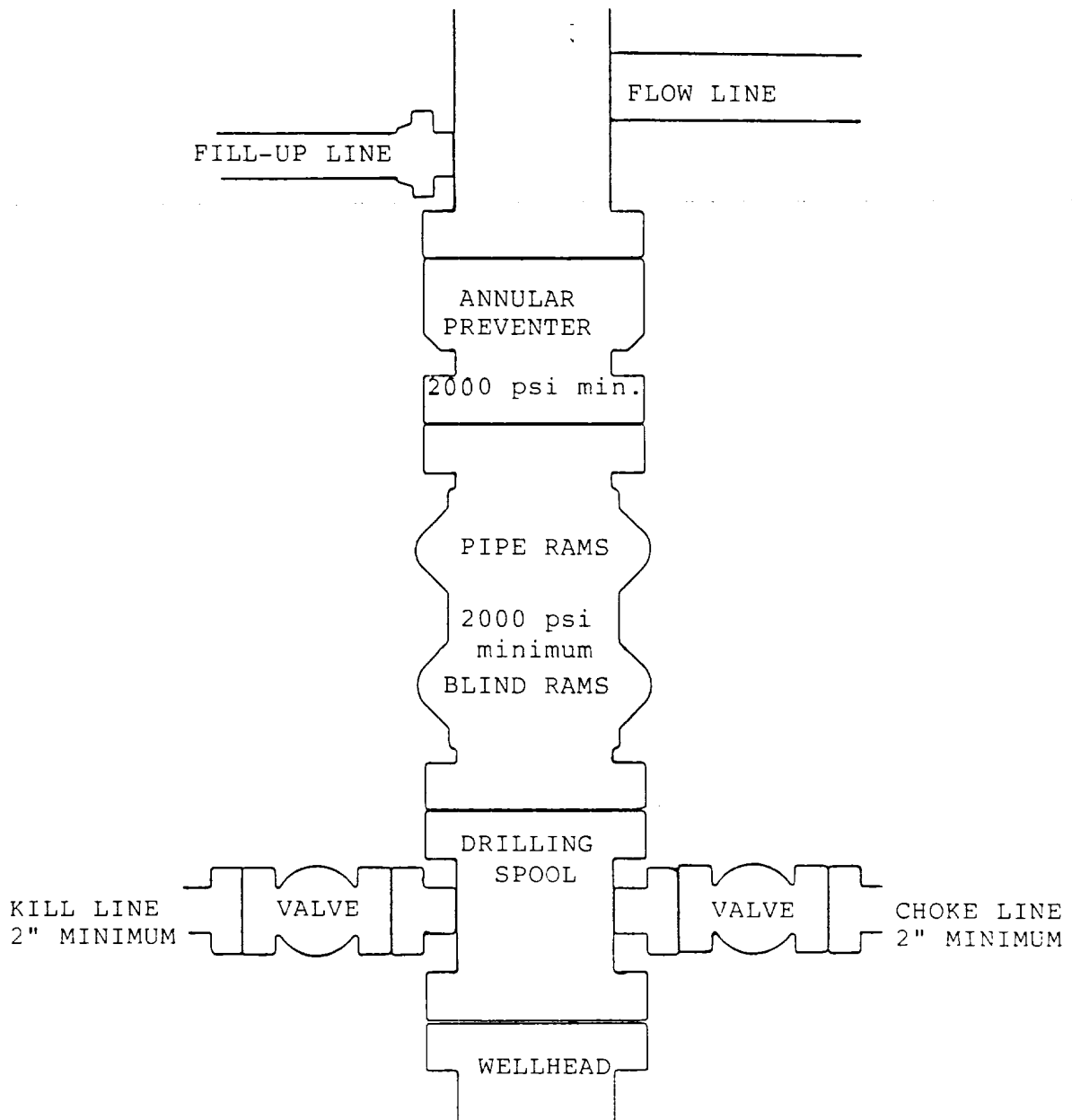
GREAT WESTERN ONSHORE INC.

STATE 1-15

MINIMUM BOP REQUIREMENTS

LEA COUNTY, NEW MEXICO

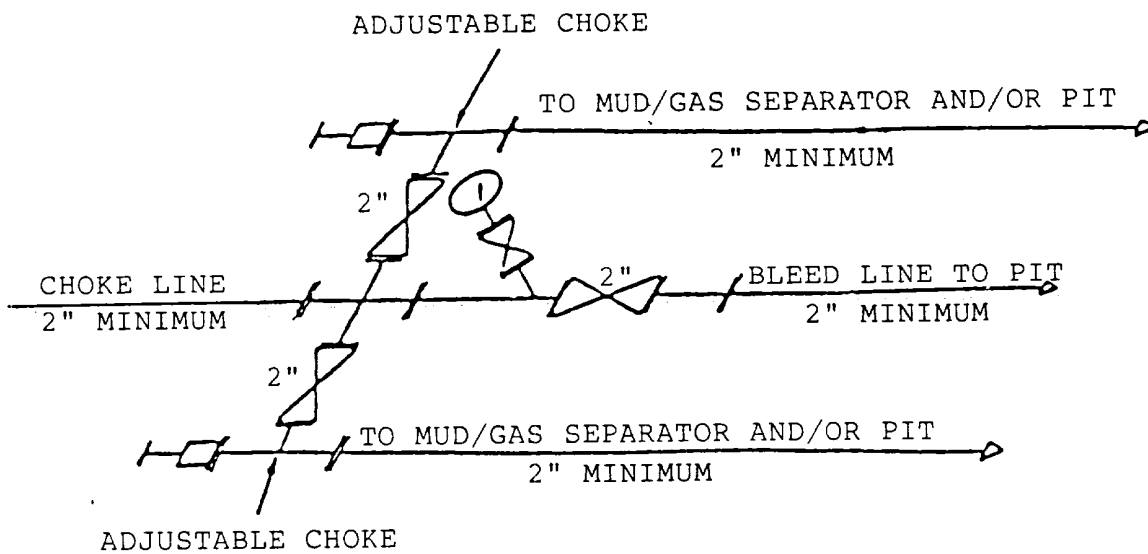
SCHEMATIC



GREAT WESTERN ONSHORE INC.

STATE #1-15

LEA COUNTY, NEW MEXICO



2M CHOKE MANIFOLD -- CONFIGURATION MAY VARY

5/14/85

RECEIVED

SEP 11 1985
JCD HOBBS
OFFICE