

N.M. OIL CORP.
P.O. BOX 1000
HOBBS, NEW MEXICO

Form 3160-3
(July 1992)

SUBMIT IN TRIPLICATE*
(Other instructions on
reverse side)

FORM APPROVED
OMB NO. 1004-0136
Expires: February 28, 1995

UNITED STATES
DEPARTMENT OF THE INTERIOR
BUREAU OF LAND MANAGEMENT

APPLICATION FOR PERMIT TO DRILL OR DEEPEN

1a. TYPE OF WORK DRILL <input checked="" type="checkbox"/> DEEPEN <input type="checkbox"/>		5. LEASE DESIGNATION AND SERIAL NO. NM-066884A	
b. TYPE OF WELL OIL WELL <input checked="" type="checkbox"/> GAS WELL <input type="checkbox"/> OTHER <input type="checkbox"/> SINGLE ZONE <input type="checkbox"/> MULTIPLE ZONE <input type="checkbox"/>		6. IF INDIAN, ALLOTTEE OR TRIBE NAME -----	
2. NAME OF OPERATOR Cobra Oil & Gas Corp.		7. UNIT AGREEMENT NAME -----	
3. ADDRESS AND TELEPHONE NO. P.O. Box 8206 Wichita Falls, Texas 76307 (Rory Edwards)		8. FARM OR LEASE NAME, WELL NO. Brown "13" Federal # 3	
4. LOCATION OF WELL (Report location clearly and in accordance with any State requirements.) At surface 1777' FSL & 2087' FWL Sec. 13 T9S-R37E Lea Co. NM At proposed prod. zone Same		9. API WELL NO. -----	
14. DISTANCE IN MILES AND DIRECTION FROM NEAREST TOWN OR POST OFFICE* 15 Miles East of Crossroads New Mexico.		10. FIELD AND POOL, OR WILDCAT Wildcat <i>Samner</i> DEVONIAN	
15. DISTANCE FROM PROPOSED* LOCATION TO NEAREST PROPERTY OR LEASE LINE, FT. (Also to nearest drlg. unit line, if any.) 553'		11. SEC., T., R., M., OR BLK. AND SURVEY OR AREA Sec. 13 T9S-R37E	
16. NO. OF ACRES IN LEASE 280		12. COUNTY OR PARISH Lea	
17. DISTANCE FROM PROPOSED LOCATION* TO NEAREST WELL, DRILLING COMPLETED, OR APPLIED FOR, ON THIS LEASE, FT. 1117'		13. STATE NM	
18. PROPOSED DEPTH 12,200'		14. NO. OF ACRES ASSIGNED TO THIS WELL 40	
19. ROTARY OR CABLE TOOLS Rotary		20. APPROX. DATE WORK WILL START* As soon as approved	
21. ELEVATIONS (Show whether DF, RT, GR, etc.) 3978' Gr.		22. APPROX. DATE WORK WILL START* As soon as approved	

PROPOSED CASING AND CEMENTING PROGRAM

SIZE OF HOLE	GRADE, SIZE OF CASING	WEIGHT PER FOOT	SETTING DEPTH	QUANTITY OF CEMENT
17 1/2"	K-55 13 3/8"	54.5	400'	340 Sx. Circulate to surface
12 1/2"	K-55 9 5/8"	36 & 40	4100'	1955 Sx. Circulate to surface
8 3/4"	N-80 5 1/2"	17 & 20	12,200'	910 Sx. Top cement app. 9200'
(600' above Wolfcamp minimum)				

1. Drill 17 1/2" hole to 400' Run and set 400' of 13 3/8" K-55 8-R ST&C casing. Cement with 340 Sx. Premium Plus cement + 2% CaCl circulate cement to surface.
2. Drill 12 1/2" hole to 4100' Run and set 4100' of 9 5/8" K-55 36 & 40 # 8-R ST&C casing. Cement with 1645 Sx. Of Halliburton Light Premium cement + 5# salt/Sx. + 1/4# Flocele/Sx. tail in with 310 Sx. Premium cement + 2% CaCl. Circulate cement to surface.
3. Drill 8 3/4" hole to 12,200' Run and set 12,200' of 5 1/2" N-80 17 & 20# LT&C & Buttress thread casing. Cement with 910 Sx. of 50/50 POZ + 3# salt/Sx. + .4% CFR-3 + .6% Halad-9. Calculated top of cement 9200'. OPER. OGRID NO. 147404

PROPERTY NO. 17360
POOL CODE 55290
EFF. DATE 9/22/95
API NO. 30-025-33116

IN ABOVE SPACE DESCRIBE PROPOSED PROGRAM: If proposal is to deepen, give data on present productive zone and proposed new productive zone. If proposal is to drill or deepen directionally, give pertinent data on subsurface locations and measured and true vertical depths. Give blowout preventer program, if any.

SIGNED Joe T. Janice TITLE Agent DATE 08/15/95

(This space for Federal or State office use)

PERMIT NO. _____ APPROVAL DATE _____
Application approval does not warrant or certify that the applicant holds legal or equitable title to those rights in the subject lease which would entitle the applicant to the operations thereon.
CONDITIONS OF APPROVAL, IF ANY:

APPROVAL SUBJECT TO
GENERAL REQUIREMENTS AND
SPECIAL STIPULATIONS
ATTACHED

APPROVED BY Rory Edwards TITLE for DATE 9-20-95

*See Instructions On Reverse Side

DISTRICT I
P.O. Box 1983, Hobbs, NM 88240

State of New Mexico
Energy, Minerals and Natural Resources Department

Form C-102
Revised February 10, 1994
Instruction on back
Submit to Appropriate District Office
State Lease - 4 Copies
Fee Lease - 3 Copies

DISTRICT II
P.O. Drawer DD, Artesia, NM 88210

OIL CONSERVATION DIVISION

P.O. Box 2088
Santa Fe, New Mexico 87504-2088

DISTRICT III
1000 Rio Brazos Rd., Aztec, NM 87410

DISTRICT IV
PO BOX 2088, SANTA FE, NM 87504-2088

☐ AMENDED REPORT

WELL LOCATION AND ACREAGE DEDICATION PLAT

API Number	Pool Code 96040 55290	Pool Name Wildest Sawyer Devonian
Property Code 17360	Property Name BROWN "13" FEDERAL	Well Number 3
OGRID No. 147404	Operator Name COBRA OIL & GAS CORPORATION	Elevation 3978

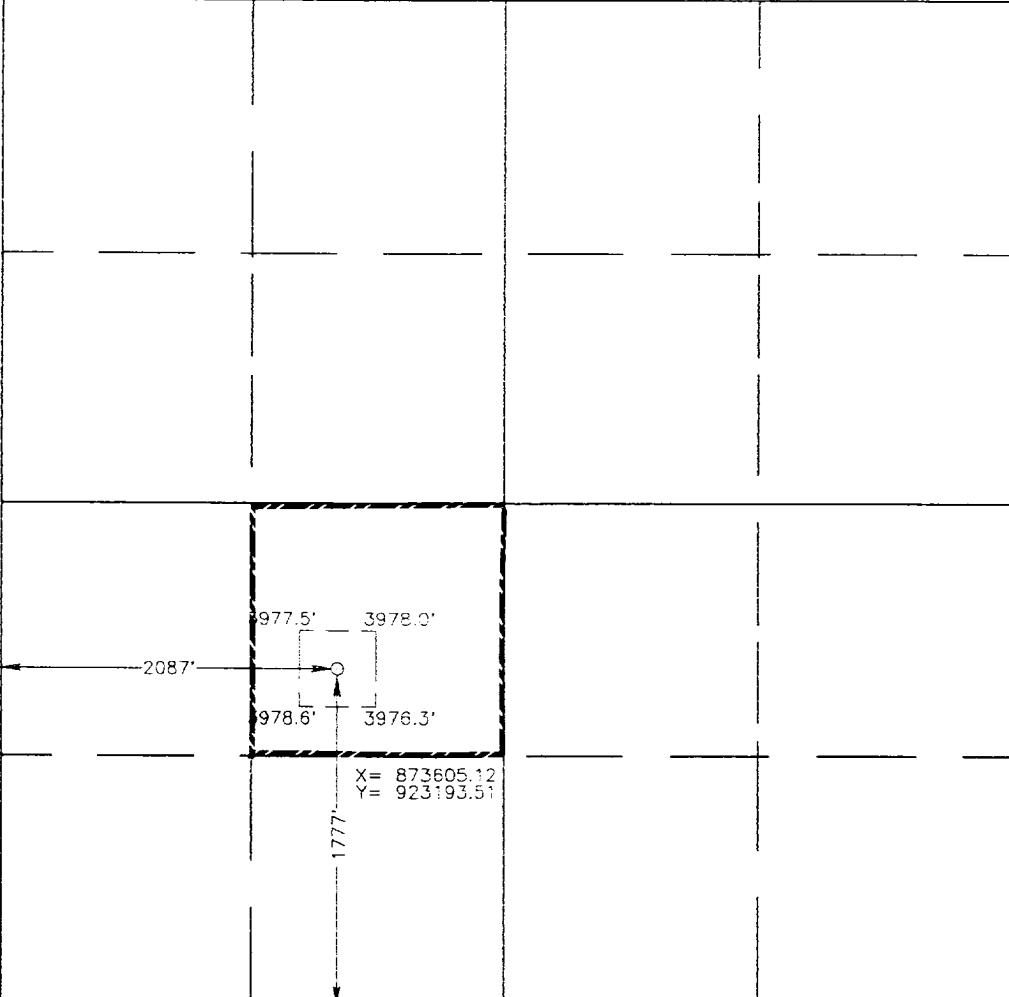
Surface Location

UL or lot No.	Section	Township	Range	Lot Idn	Feet from the	North/South line	Feet from the	East/West line	County
K	13	9 S	37 E		1777	SOUTH	2087	WEST	LEA

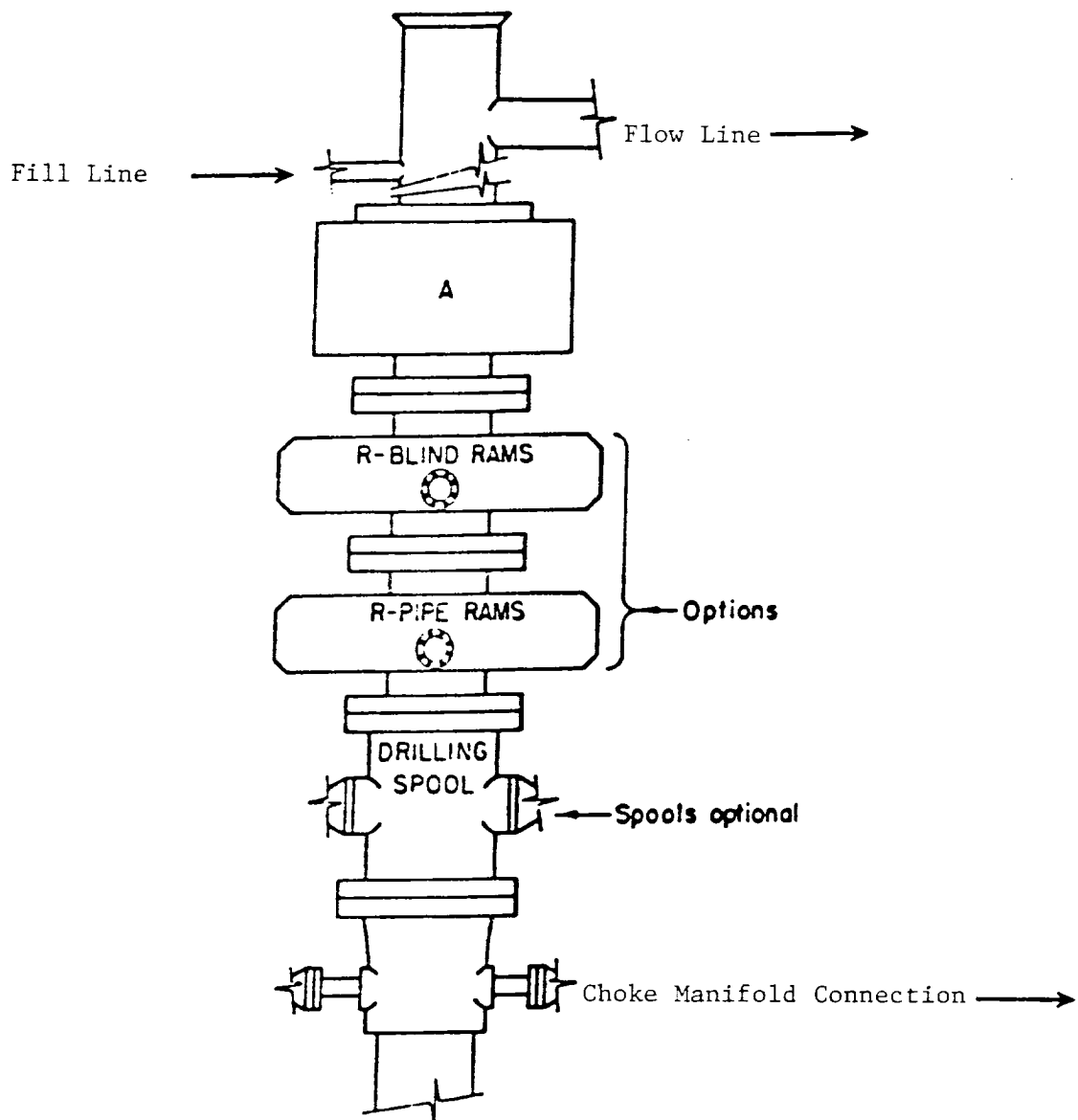
Bottom Hole Location If Different From Surface

UL or lot No.	Section	Township	Range	Lot Idn	Feet from the	North/South line	Feet from the	East/West line	County
Dedicated Acres 40	Joint or Infill	Consolidation Code	Order No.						

NO ALLOWABLE WILL BE ASSIGNED TO THIS COMPLETION UNTIL ALL INTERESTS HAVE BEEN CONSOLIDATED
OR A NON-STANDARD UNIT HAS BEEN APPROVED BY THE DIVISION

	<p>OPERATOR CERTIFICATION</p> <p>I hereby certify the the information contained herein is true and complete to the best of my knowledge and belief.</p> <p><i>Joe T Janica</i> Signature Joe T. Janica Printed Name Agent Title 08/15/95 Date</p>
	<p>SURVEYOR CERTIFICATION</p> <p>I hereby certify that the well location shown on this plat was plotted from field notes of actual surveys made by me or under my supervision, and that the same is true and correct to the best of my belief.</p> <p>AUGUST 3, 1995</p> <p>Date Surveyed Signature & Seal of Professional Surveyor Professional Surveyor NEW MEXICO 3239 8-08-95 P.O. Num. 85-1174 Certificate No. JOHN W. WEST 676 RONALD E. EIDSON 3239 EIDSON 12641</p>





ARRANGEMENT SRRA

1500 Series
5000 PSI WP

EXHIBIT "E"
B.O.P. SKETCH TO BE USED ON
COBRA OIL & GAS CORP.
BROWN "13" FEDERAL # 3
1777' FSL & 2087' FWL SEC. 13
TQ8-R37E IFA CO NM

APPLICATION TO DRILL

COBRA OIL & GAS CORP.
BROWN "13" FEDERAL # 3
1777' FSL & 2087' FWL SEC. 13
T9S-R37E LEA CO. NM

In response to questions asked under Section II B of Bulletin NTL-6, the following information is provided for your consideration:

1. Location: 1777' FSL & 2087' FWL Sec. 13 T9S-R37E Lea Co.
New Mexico
2. Elevation Above Sea Level: 3978' GL
3. Geologic Name of Surface Formation: Quaternary Aeolian Deposits
4. Drilling Tools and Associated Equipment: Conventional rotary
drilling rig using mud for the circulation medium.
5. Proposed Drilling Depth: 12200'
6. Estimated Geological Marker Tops:

Rustler Anhydrite	2140'	Wolfcamp	8920'
Queen	3560'	Strawn	10480'
San Andres	4080'	Mississippian	11490'
Glorieta	5580'	Woodford	11850'
Abo	7680'	Devonian	11930'
7. Possible Mineral Bearing Formation:

San Andres	Oil	Wolfcamp	Oil	Devonian	Oil
Glorieta	Oil	Strawn	Oil		
8. Casing Program:

Hole Size	Interval	OD Csg	Weight	Thread	Collar	Grade	Cond.
17½"	0-400'	13 3/8"	54.5#	8-R	ST&C	K-55	New
12½"	400-4100'	9 5/8"	40 & 36#	8-R	ST&C	K-55	New
8 3/4"	4100-12200'	5½"	17 & 20#	8-R & Buttress "	LT&C	N-80	New

APPLICATION TO DRILL

COBRA OIL & GAS CORP.
BROWN "13" FEDERAL # 3
1777' FSL & 2087' FWL SEC. 13
T9S-R37E LEA CO. NM

12. Testing, Logging, and Coring Program:

- A. Mud logging unit on from 4000' to TD.
- B. Dual Laterolog/BHC Sonic/Gamma Ray/Caliper from TD to surface casing.
- C. LTD/CNL/Gamma Ray/Caliper minimum run.
- D. Cased hole correlation log over Pay section.
- E. DST'S as shows dictate.

13. Potential Hazards:

No abnormal pressures or temperatures are expected during the drilling of this well. Hydrogen Sulfide (H₂S) is expected in this wellbore; however all precautions will be taken and H₂S detection equipment will be employed. Lost circulation may be encountered in some zones that will be penetrated. Mud weight and other properties will be closely monitored and lost circulation material will be on location throughout the drilling operation.

14. Anticipated spud date and duration of operation:

Road and location will begin after the BUREAU OF LAND MANAGEMENT has approved this APD. Anticipated spud date is 09/20/95 . Drilling is expected to take 45 to 55 days. If production casing is run an additional 30 days will be required to complete and construct surface facilities in order to place well on production.

15. Other facets of operation:

After running casing cased hole correlation logs will be run from TD over the pay intervals. The Devonian pay will be perforated and stimulated. The well will be stimulated, swab tested and completed as an oil well

