

District I
PO Box 1980, Hobbs, NM 88241-1980
District II
PO Drawer DD, Artesia, NM 88211-0719
District III
1000 Rio Brazos Rd., Aztec, NM 87410
District IV
PO Box 2088, Santa Fe, NM 87504-2088

State of New Mexico
Energy, Minerals & Natural Resources Department

OIL CONSERVATION DIVISION
PO Box 2088
Santa Fe, NM 87504-2088

Form C-101

Revised February 10, 1994

Instructions on back

Submit to Appropriate District Office

State Lease - 6 Copies

Fee Lease - 5 Copies

☐ AMENDED REPORT

APPLICATION FOR PERMIT TO DRILL, RE-ENTER, DEEPEN, PLUGBACK, OR ADD A ZONE

¹ Operator Name and Address. COBRA OIL & GAS CORP. P.O. BOX 8206 WICHITA FALLS, TEXAS 76307		² OGRID Number 147404
		³ API Number 30 - 025-33188
⁴ Property Code 17949	⁵ Property Name ALESHIRE "9"	⁶ Well No. 1

⁷ Surface Location

UL or lot no. J	Section 9	Township 9S	Range 36E	Lot Idn	Feet from the 1870'	North/South line SOUTH	Feet from the 1944'	East/West line EAST	County LEA
--------------------	--------------	----------------	--------------	---------	------------------------	---------------------------	------------------------	------------------------	---------------

⁸ Proposed Bottom Hole Location If Different From Surface

UL or lot no.	Section	Township	Range	Lot Idn	Feet from the	North/South line	Feet from the	East/West line	County
⁹ Proposed Pool 1 Wildcat					¹⁰ Proposed Pool 2				

¹¹ Work Type Code N	¹² Well Type Code O	¹³ Cable/Rotary R	¹⁴ Lease Type Code P	¹⁵ Ground Level Elevation 4069'
¹⁶ Multiple NO	¹⁷ Proposed Depth 13,500'	¹⁸ Formation DEVONIAN	¹⁹ Contractor UNKNOWN	²⁰ Spud Date 11/28/95

²¹ Proposed Casing and Cement Program

Hole Size	Casing Size	Casing weight/foot	Setting Depth	Sacks of Cement	Estimated TOC
17 1/2"	13 3/8"	54.5	400'	340	CIRCULATE
12 1/4"	9 5/8"	36 & 40	4100'	1955	CIRCULATE
8 3/4"	5 1/2"	17 & 20	13,500'	910	9700' Est.

²² Describe the proposed program. If this application is to DEEPEN or PLUG BACK give the data on the present productive zone and proposed new productive zone. Describe the blowout prevention program, if any. Use additional sheets if necessary.

Permit Expires 6 Months From Approval
Date Unless Drilling Underway.

SEE ATTACHED SHEET

²³ I hereby certify that the information given above is true and complete to the best of my knowledge and belief. Signature: <i>Joe T. Janica</i>		OIL CONSERVATION DIVISION	
Printed name: Joe T. Janica		Approved by: ORIGINAL SIGNED BY JERRY SEXTON DISTRICT I SUPERVISOR	
Title: Agent		Title:	
Date: 11/22/95		Approval Date: NOV 22 1995	Expiration Date:
Phone: 505-392-2112		Conditions of Approval: Attached <input type="checkbox"/>	

COBRA OIL AND GAS CORP.
ALESHIRE "9" # 1
1870' FSL & 1944' FEL
SEC. 9 T9S-R36E LEA CO. NM

1. Drill 17½" hole to 400'. Run and set 400' of 13 3/8" H-40 54.5# ST&C casing. Cement with 340 Sx Premium Plus cement + 2% CaCl, circulate cement to surface.
2. Drill 12¼" hole to 4100'. Run and set 4100' of 9 5/8" J-55 36 & 40# ST&C casing. Cement with 1645 Sx. Halco Light Premium cement + ¼# Flocele/Sx + 5# Salt/Sx., tail in with 310 Sx. Premium Plus cement + 2% CaCl. Circulate cement to surface.
3. Drill 8 3/4" hole to 13,500'. Run and set 13,500' of 5½" L-80 17 & 20# buttress & LT&C casing. Cement with 910 Sx. 50/50 POZ Premium cement + 3# KCl/Sx. + .4% CFR-3 + .6% Halad 9. Estimated top of cement 9700'.

DISTRICT I
P.O. Box 1960, Hobbs, NM 88241-1960

DISTRICT II
P.O. Drawer DD, Artesia, NM 88211-0719

DISTRICT III
1000 Rio Brazos Rd., Aztec, NM 87410

DISTRICT IV
P.O. BOX 2088, SANTA FE, N.M. 87504-2088

State of New Mexico
Energy, Minerals and Natural Resources Department

Form C-102
Revised February 10, 1994
Submit to Appropriate District Office
State Lease - 4 Copies
Fee Lease - 3 Copies

OIL CONSERVATION DIVISION

P.O. Box 2088
Santa Fe, New Mexico 87504-2088

☐ AMENDED REPORT

WELL LOCATION AND ACREAGE DEDICATION PLAT

API Number 30-025-33188	Pool Code	Pool Name WILDCAT-DEVONIAN
Property Code 17949	Property Name ALESIRE 9	Well Number # 1
OGRID No. 147404	Operator Name COBRA OIL & GAS CORPORATION	Elevation 4069

Surface Location

UL or lot No. J	Section 9	Township 9 S	Range 36 E	Lot Idn	Feet from the 1870	North/South line SOUTH	Feet from the 1944	East/West line EAST	County LEA
--------------------	--------------	-----------------	---------------	---------	-----------------------	---------------------------	-----------------------	------------------------	---------------

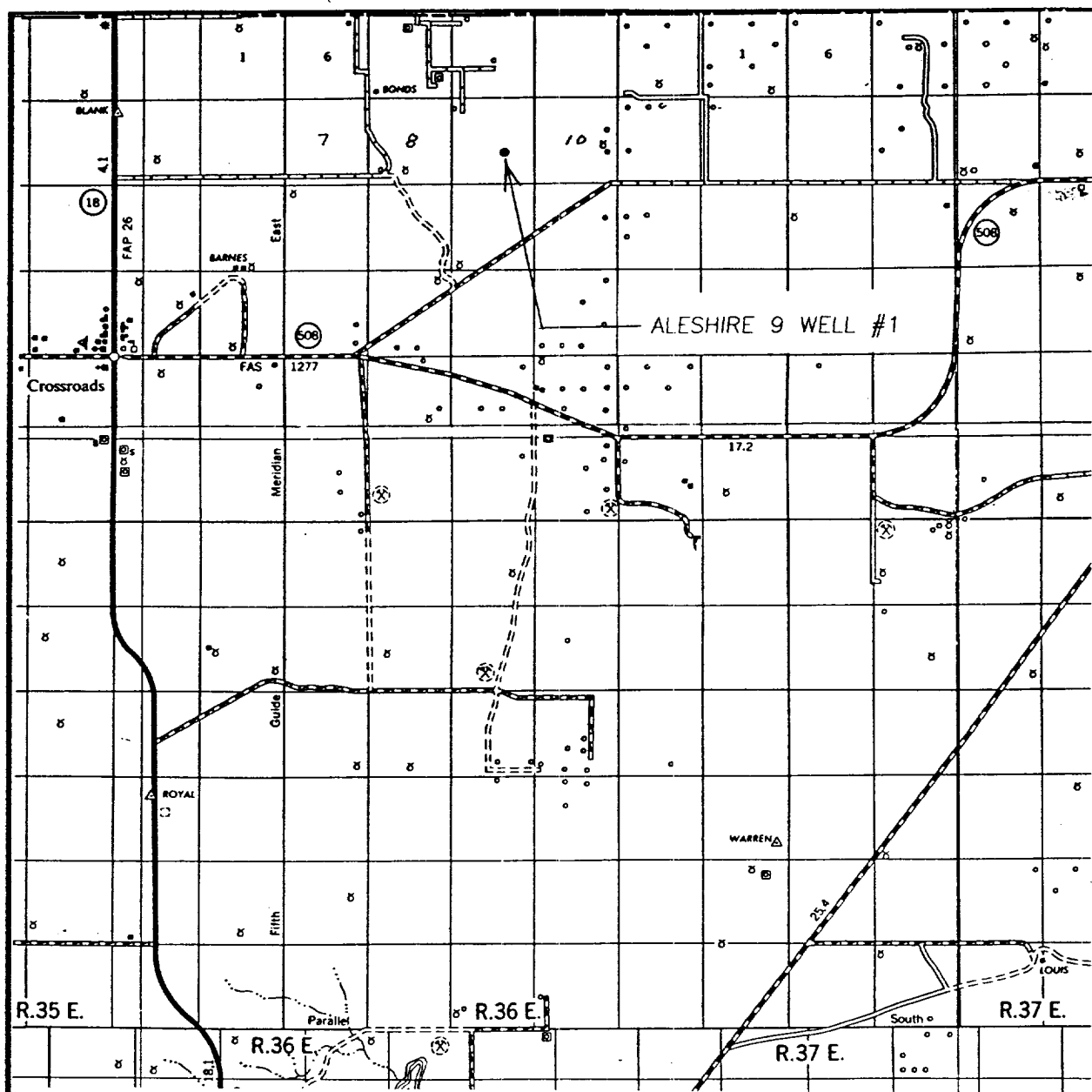
Bottom Hole Location If Different From Surface

UL or lot No.	Section	Township	Range	Lot Idn	Feet from the	North/South line	Feet from the	East/West line	County
Dedicated Acres 40	Joint or Infill	Consolidation Code	Order No.						

NO ALLOWABLE WILL BE ASSIGNED TO THIS COMPLETION UNTIL ALL INTERESTS HAVE BEEN CONSOLIDATED
OR A NON-STANDARD UNIT HAS BEEN APPROVED BY THE DIVISION

	OPERATOR CERTIFICATION I hereby certify the the information contained herein is true and complete to the best of my knowledge and belief. Signature Joe T. Janica Printed Name Agent Title 11/22/95 Date
	SURVEYOR CERTIFICATION I hereby certify that the well location shown on this plat was plotted from field notes of actual surveys made by me or under my supervision, and that the same is true and correct to the best of my belief. NOVEMBER 18, 1995 Date Surveyed Signature & Seal of Professional Surveyor Certificate No. JOHN W. WEST 676 RONALD W. EIDSON 3239 GARY EIDSON 12641

VICINITY MAP



SCALE: 1" = 2 MILES

SEC. 9 TWP. 9-S RGE. 36-E

SURVEY N.M.P.M.

COUNTY LEA

DESCRIPTION 1870' FSL & 1944' FEL

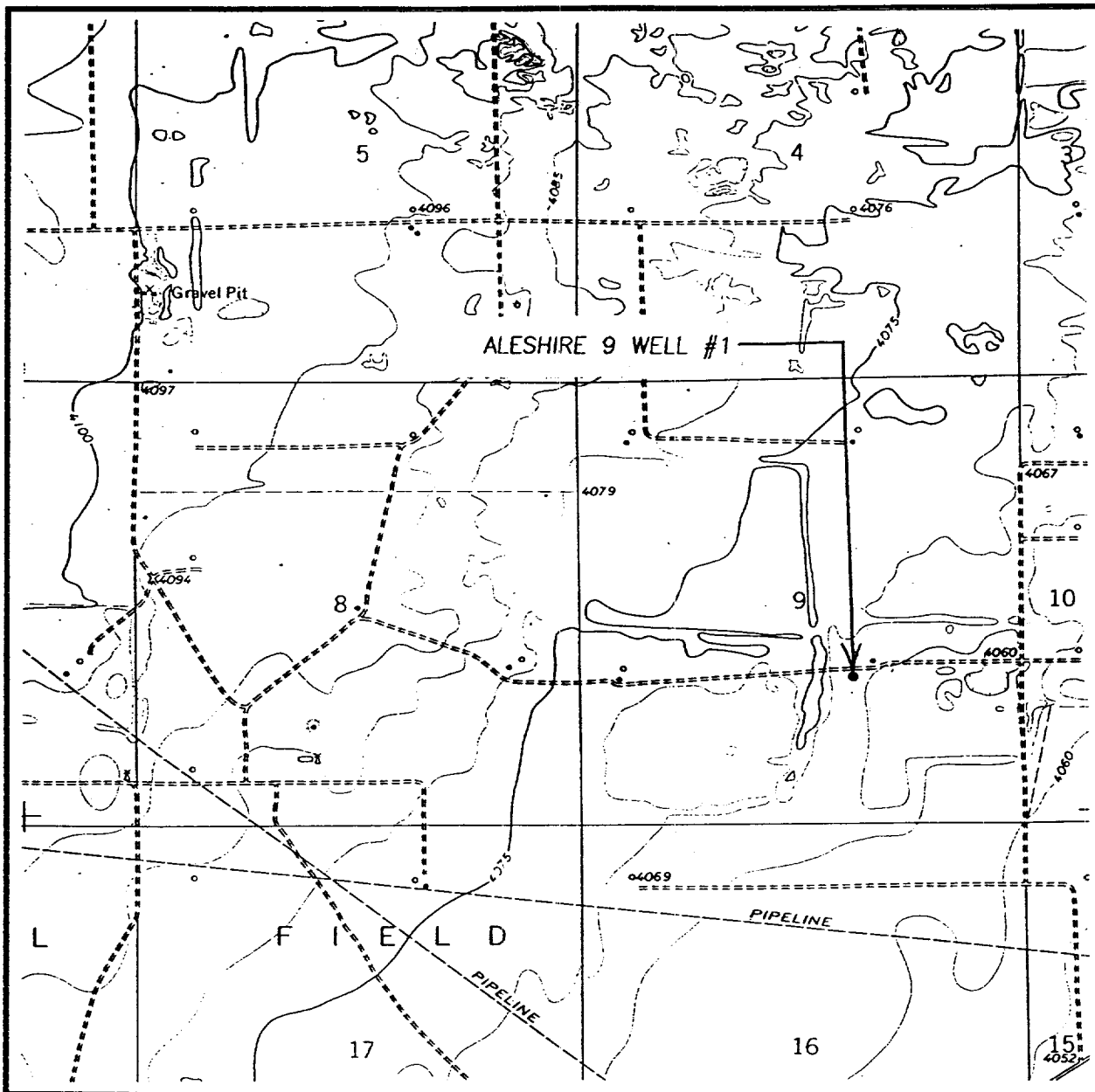
ELEVATION 4069

OPERATOR COBRA OIL & GAS CORPORATION

LEASE ALESHERE 9

JOHN WEST ENGINEERING
HOBBS, NEW MEXICO
(505) 393-3117

LOCATION VERIFICATION MAP



SCALE: 1" = 2000'

CONTOUR INTERVAL: - 5'

SEC. 9 TWP. 9-S RGE. 36-E

SURVEY N.M.P.M.

COUNTY LEA

DESCRIPTION 1870' FSL & 1944' FEL

ELEVATION 4069

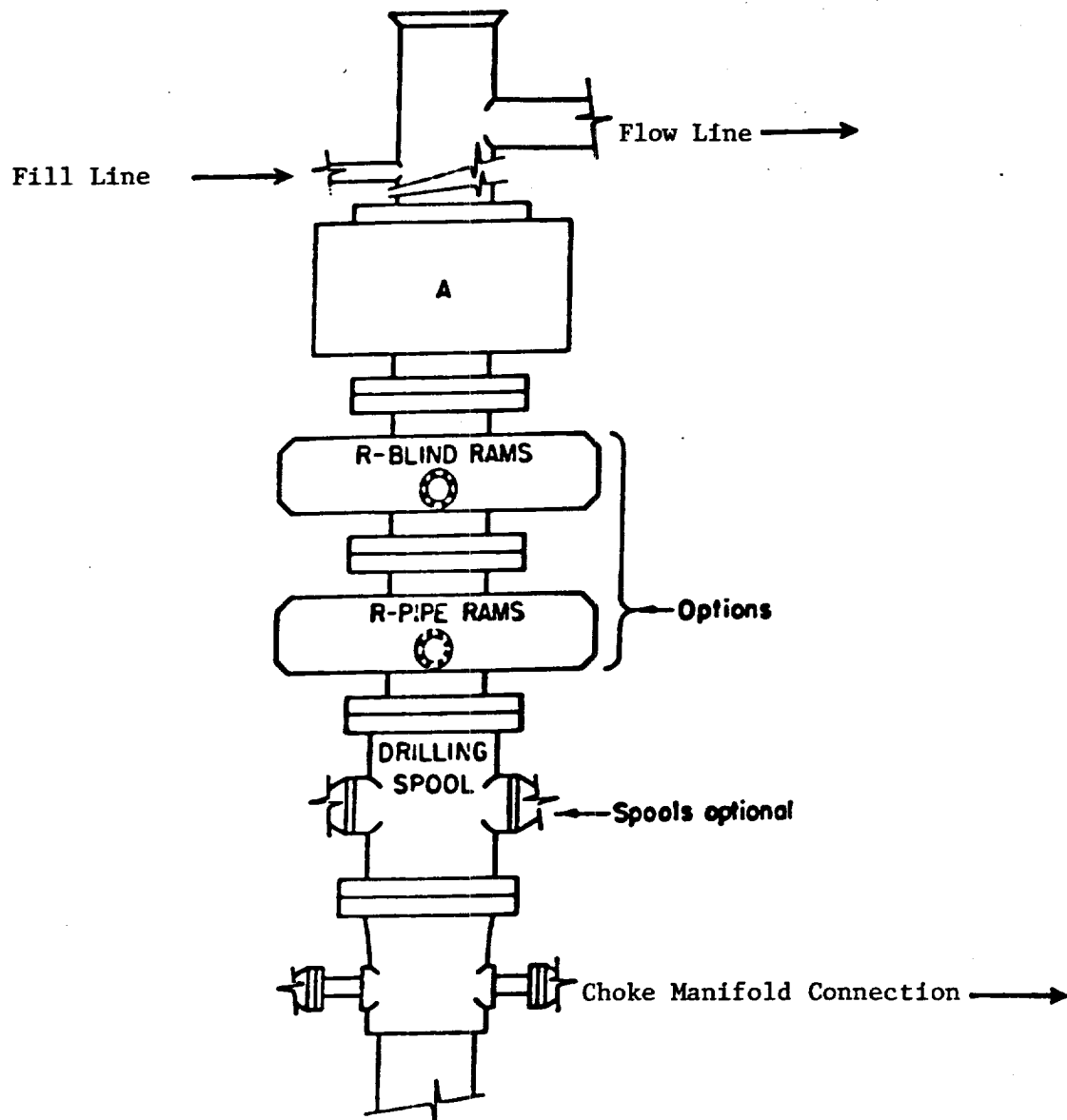
OPERATOR COBRA OIL & GAS CORPORATION

LEASE ALESHIRE 9

U.S.G.S. TOPOGRAPHIC MAP

CROSSROADS, N.M.

JOHN WEST ENGINEERING
HOBBS, NEW MEXICO
(505) 393-3117



ARRANGEMENT SRRA

1500 Series
5000 PSI WP