

DISTRICT I
P.O. Box 1980, Hobbs, NM 88241-1980

State of New Mexico

Energy, Minerals and Natural Resources Department

Form C-102
Revised February 10, 1994
Submit to Appropriate District Office
State Lease - 4 Copies
Fee Lease - 3 Copies

DISTRICT II
P.O. Drawer DD, Artesia, NM 88211-0719

DISTRICT III
1000 Rio Brazos Rd., Artec, NM 87410

OIL CONSERVATION DIVISION

P.O. Box 2088
Santa Fe, New Mexico 87504-2088

DISTRICT IV
P.O. Box 2088, Santa Fe, NM 87504-2088

☐ AMENDED REPORT

WELL LOCATION AND ACREAGE DEDICATION PLAT

API Number 30-025-34049	Pool Code ✓	Pool Name Wildcat - Devonian
Property Code 21059	Property Name STATE "7"	Well Number 1
OGRID No. 147404	Operator Name COBRA OIL & GAS CORPORATION	Elevation 3974

Surface Location

UL or lot No. P	Section 7	Township 10 S	Range 37 E	Lot Idn	Feet from the 591	North/South line SOUTH	Feet from the 543	East/West line EAST	County LEA
--------------------	--------------	------------------	---------------	---------	----------------------	---------------------------	----------------------	------------------------	---------------

Bottom Hole Location If Different From Surface

UL or lot No.	Section	Township	Range	Lot Idn	Feet from the	North/South line	Feet from the	East/West line	County
---------------	---------	----------	-------	---------	---------------	------------------	---------------	----------------	--------

Dedicated Acres 40	Joint or Infill	Consolidation Code	Order No.
-----------------------	-----------------	--------------------	-----------

NO ALLOWABLE WILL BE ASSIGNED TO THIS COMPLETION UNTIL ALL INTERESTS HAVE BEEN CONSOLIDATED
OR A NON-STANDARD UNIT HAS BEEN APPROVED BY THE DIVISION

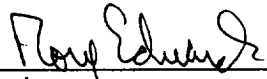
LOT 1 39.60 AC.			
LOT 2 39.63 AC.			
LOT 3 39.67 AC.			
LOT 4 39.70 AC.			

NAD 83
SPC NME
X=850239.84=E
Y=895365.69=N

543'
591'

OPERATOR CERTIFICATION

I hereby certify the the information contained herein is true and complete to the best of my knowledge and belief.

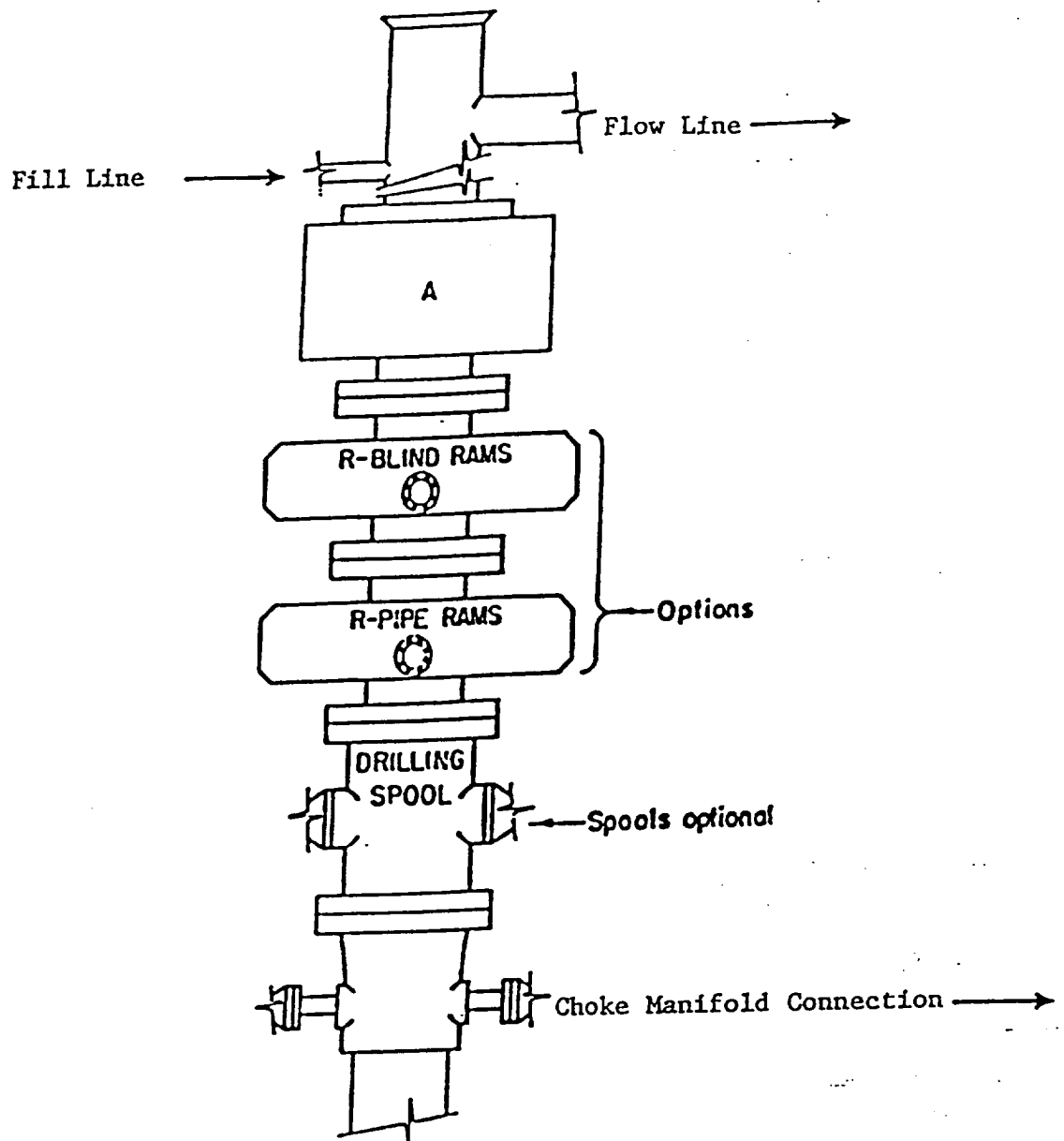

Signature
Rory Edwards
Printed Name
Production Supervisor
Title
6/24/97
Date

SURVEYOR CERTIFICATION

I hereby certify that the well location shown on this plat was plotted from field notes of actual surveys made by me or under my supervision, and that the same is true and correct to the best of my belief.

JUNE 18, 1997

Date Surveyed
Signature & Seal of Professional Surveyor
JLP
NEW MEXICO
3239
N.O. Num. 97-1038
Certified by: J. EIDSON, 3239
G. EIDSON, 12641



ARRANGEMENT SRRA

1500 Series
5000 PSI WP