

District I  
PO Box 1980, Hobbs, NM 88241-1980  
District II  
PO Drawer DD, Artesa, NM 88211-0719  
District III  
1000 Rio Brazos Rd., Aztec, NM 87410  
District IV  
PO Box 2088, Santa Fe, NM 87504-2088

State of New Mexico  
Energy, Minerals & Natural Resources Department

OIL CONSERVATION DIVISION  
PO Box 2088  
Santa Fe, NM 87504-2088

Form C-101  
Revised February 10, 1994  
Instructions on back  
Submit to Appropriate District Office  
State Lease - 6 Copies  
Fee Lease - 5 Copies

☐ AMENDED REPORT

APPLICATION FOR PERMIT TO DRILL, RE-ENTER, DEEPEN, PLUGBACK, OR ADD A ZONE

Operator Name and Address. Cobra Oil & Gas Corporation P.O. Box 8206 Wichita Falls, Texas 76307-8206		<sup>1</sup> OGRID Number 147404
		<sup>1</sup> API Number 30-025-34070
<sup>4</sup> Property Code 20657	<sup>5</sup> Property Name State 16	<sup>6</sup> Well No. 1Y

<sup>7</sup> Surface Location

UL or lot no.	Section	Township	Range	Lot Idn	Feet from the	North/South line	Feet from the	East/West line	County
P	16	9S	37E		330'	South	940'	East	Lea

<sup>8</sup> Proposed Bottom Hole Location If Different From Surface

UL or lot no.	Section	Township	Range	Lot Idn	Feet from the	North/South line	Feet from the	East/West line	County
<sup>9</sup> Proposed Pool 1 Wildcat - Devonian					<sup>10</sup> Proposed Pool 2				

<sup>11</sup> Work Type Code N	<sup>12</sup> Well Type Code O	<sup>13</sup> Cable/Rotary Rotary	<sup>14</sup> Lease Type Code S	<sup>15</sup> Ground Level Elevation 3988
<sup>16</sup> Multiple NO	<sup>17</sup> Proposed Depth 12,600	<sup>18</sup> Formation Devonian	<sup>19</sup> Contractor Patterson Drlg	<sup>20</sup> Spud Date 7/23/97

<sup>21</sup> Proposed Casing and Cement Program

Hole Size	Casing Size	Casing weight/foot	Setting Depth	Sacks of Cement	Estimated TOC
17 1/2	13 3/8	43#	±400'	400	Surface
12 1/4	8 5/8	32#	±4300'	1200	Surface
7 7/8	5 1/2	17# & 20#	±12600'	750	±10,000'

<sup>22</sup> Describe the proposed program. If this application is to DEEPEN or PLUG BACK give the data on the present productive zone and proposed new productive zone. Describe the blowout prevention program, if any. Use additional sheets if necessary.

Drill 17 1/2" hole to ±400'. Run 13 3/8" 48# casing. Cement with 400 sacks Premium Plus.

Drill 12 1/4" hole to ±4300'. Run 8 5/8" 32# casing. Cement with 1200 sacks 35.65 Poz & Class "C".

Drill 7 7/8" hole to ±12,600'. Run 5 1/2" 17# & 20# L-80 casing. Cement with 750 sacks Class "H" cement.

<sup>23</sup> I hereby certify that the information given above is true and complete to the best of my knowledge and belief.

Signature:

*Rory Edwards*

Printed name:

Rory Edwards

Title:

Production Supervisor

Date:

7/21/97

Phone:

940-716-5100

OIL CONSERVATION DIVISION

Approved by ORIGINAL SIGNED BY CHRIS WILLIAMS  
DISTRICT I SUPERVISOR

Title:

Approval Date: 7/28/97

Expiration Date:

Conditions of Approval:

Attached ☐

DISTRICT I  
P.O. Box 1980, Hobbs, NM 88241-1980

State of New Mexico  
Energy, Minerals and Natural Resources Department

Form C-102  
Revised February 10, 1994  
Submit to Appropriate District Office  
State Lease - 4 Copies  
Fee Lease - 3 Copies

DISTRICT II  
P.O. Drawer DD, Artesia, NM 88211-0710

DISTRICT III  
1000 Rio Brazos Rd., Aztec, NM 87410

DISTRICT IV  
P.O. BOX 2088, SANTA FE, N.M. 87504-2088

OIL CONSERVATION DIVISION

P.O. Box 2088  
Santa Fe, New Mexico 87504-2088

☐ AMENDED REPORT

WELL LOCATION AND ACREAGE DEDICATION PLAT

API Number <b>30-025-34070</b>	Pool Code <b>V</b>	Pool Name <b>WILDCAT-DEVONIAN</b>
Property Code <b>20657</b>	Property Name <b>STATE 16</b>	Well Number <b>1-Y</b>
OGRID No. <b>147404</b>	Operator Name <b>COBRA OIL &amp; GAS CORPORATION</b>	Elevation <b>3989</b>

Surface Location

UL or lot No. <b>P</b>	Section <b>16</b>	Township <b>9 S</b>	Range <b>37 E</b>	Lot Idn	Feet from the <b>330</b>	North/South line <b>SOUTH</b>	Feet from the <b>940</b>	East/West line <b>EAST</b>	County <b>LEA</b>
---------------------------	----------------------	------------------------	----------------------	---------	-----------------------------	----------------------------------	-----------------------------	-------------------------------	----------------------

Bottom Hole Location If Different From Surface

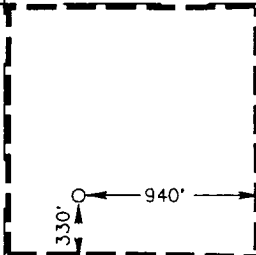
UL or lot No.	Section	Township	Range	Lot Idn	Feet from the	North/South line	Feet from the	East/West line	County
---------------	---------	----------	-------	---------	---------------	------------------	---------------	----------------	--------

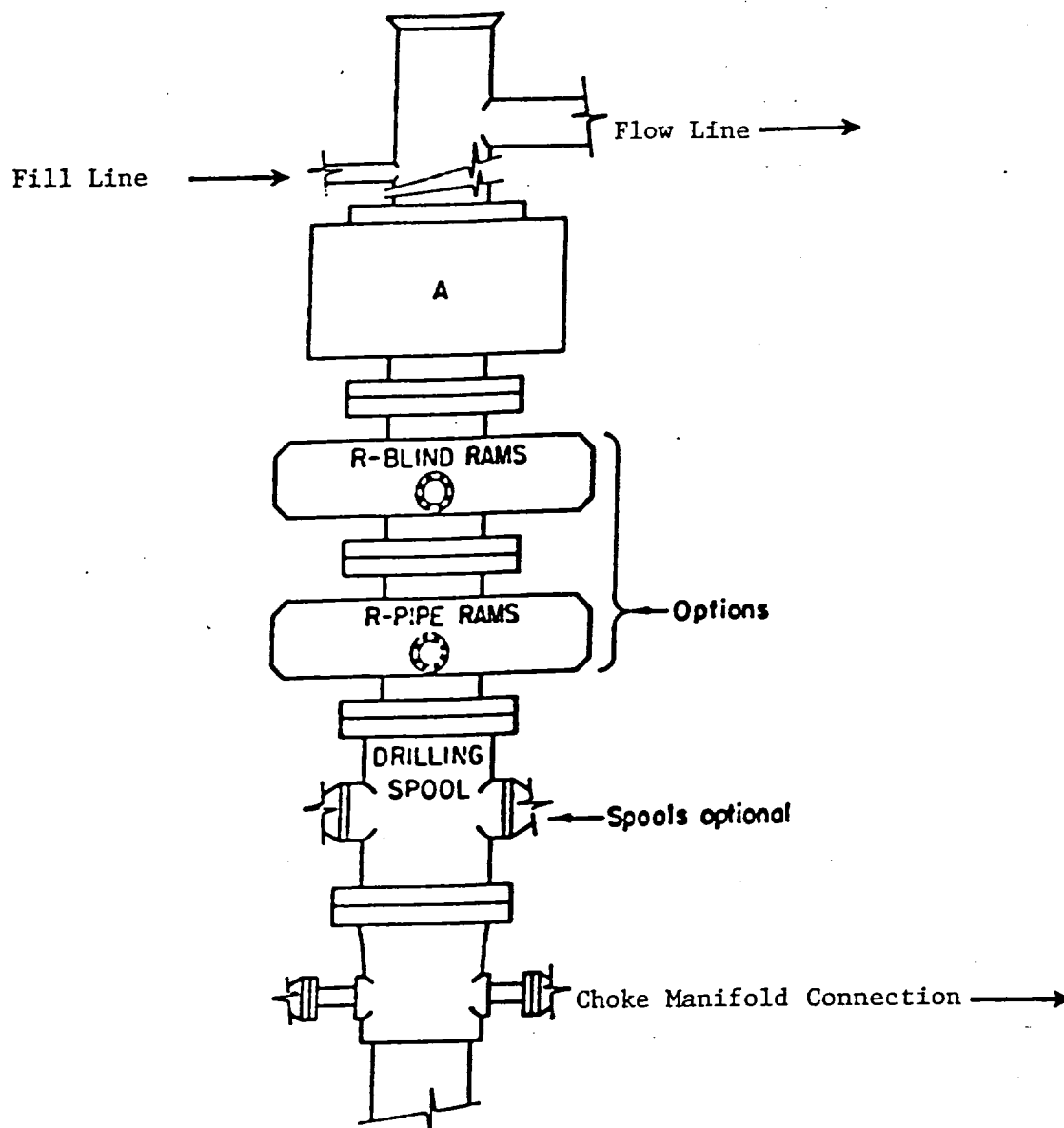
Dedicated Acres <b>40</b>	Joint or Infill	Consolidation Code	Order No.
------------------------------	-----------------	--------------------	-----------

NO ALLOWABLE WILL BE ASSIGNED TO THIS COMPLETION UNTIL ALL INTERESTS HAVE BEEN CONSOLIDATED  
OR A NON-STANDARD UNIT HAS BEEN APPROVED BY THE DIVISION

				OPERATOR CERTIFICATION	
				I hereby certify the the information contained herein is true and complete to the best of my knowledge and belief.	
				Signature <i>Joe T. Janica</i>	
				Printed Name <b>Joe T. Janica</b> Agent	
				Title	
				<b>07/23/97</b> Date	
				SURVEYOR CERTIFICATION	
				I hereby certify that the well location shown on this plat was plotted from field notes of actual surveys made by me or under my supervision, and that the same is true and correct to the best of my belief.	
				JULY 22, 1997	
				Date Surveyed	
				Signature & Seal of Professional Surveyor <i>GARY G. EIDSON</i>	
				Professional Surveyor <b>NEW MEXICO</b> <b>223-97</b> <b>97-11-1224</b>	
				Certification No. <b>JOHN W. WEST</b> 676	
				<b>RONALD J. EIDSON</b> 3239	
				<b>GARY EIDSON</b> 12641	

X=860040.33  
Y=921583.84  
NAD 27  
NME ZONE





# **ARRANGEMENT SRRA**

1500 Series  
5000 PSI WP