

DISTRICT I
P.O. Box 1980, Hobbs, NM 88241-1980

DISTRICT II
P.O. Drawer DD, Artesia, NM 88211-0719

DISTRICT III
1000 Rio Brazos Rd., Aztec, NM 87410

DISTRICT IV
P.O. BOX 2088, SANTA FE, N.M. 87504-2088

State of New Mexico
Energy, Minerals and Natural Resources Department

Form C-102
Revised February 10, 1994
Submit to Appropriate District Office
State Lease - 4 Copies
Fee Lease - 3 Copies

OIL CONSERVATION DIVISION

P.O. Box 2088
Santa Fe, New Mexico 87504-2088

☐ AMENDED REPORT

WELL LOCATION AND ACREAGE DEDICATION PLAT

| | | |
|-----------------------------------|---|---|
| API Number 30-025-34201 | Pool Code 13560 | Pool Name South Crossroads - Devonian |
| Property Code 21801 | Property Name GAINER UNIT | Well Number 1 |
| OGRID No. 147404 | Operator Name COBRA OIL & GAS CORPORATION | Elevation 4015 |

Surface Location

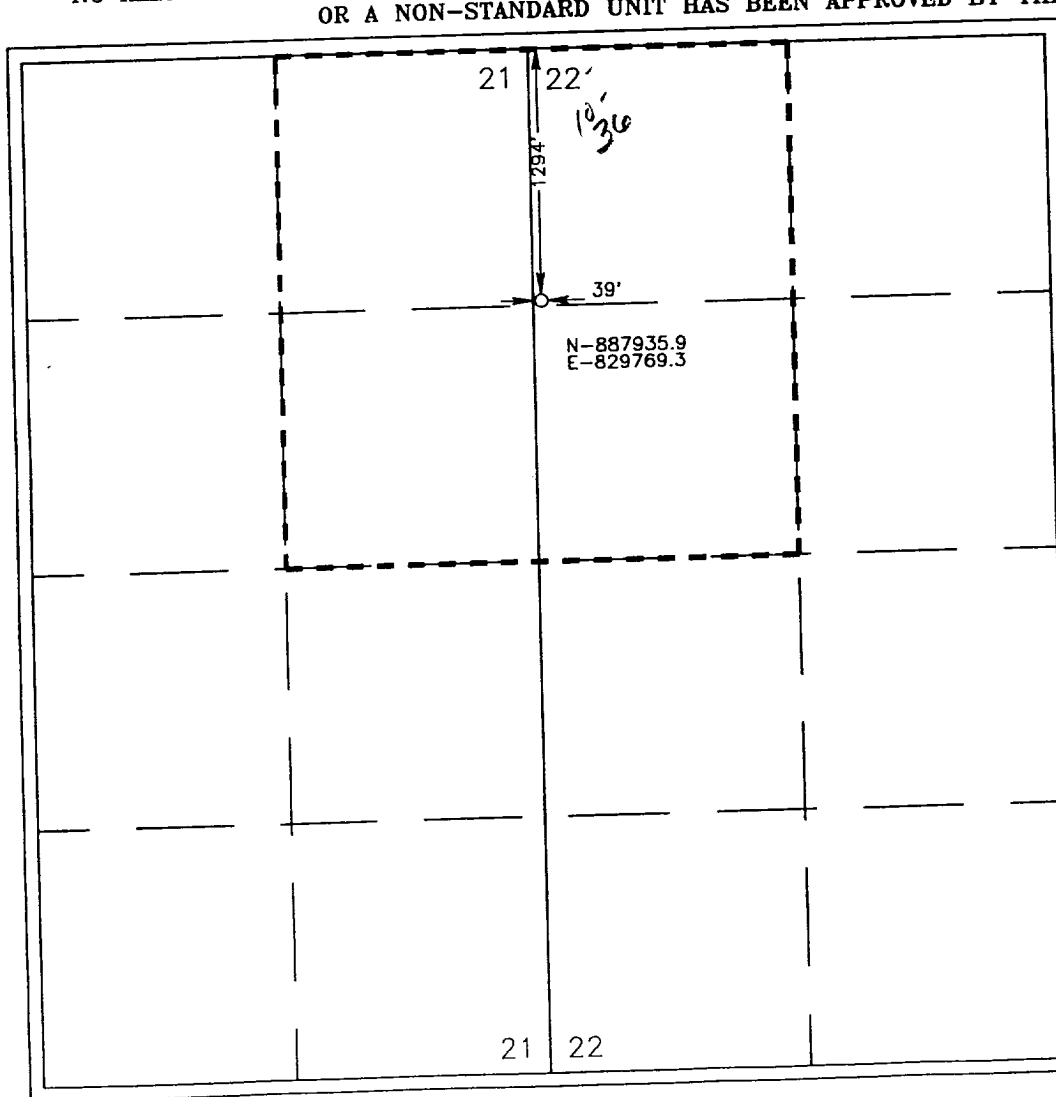
| UL or lot No. | Section | Township | Range | Lot Idn | Feet from the | North/South line | Feet from the | East/West line | County |
|---------------|-----------|-------------|-------------|---------|---------------|------------------|---------------|----------------|------------|
| D | 22 | 10 S | 36 E | | 1294 | NORTH | 39 | WEST | LEA |

Bottom Hole Location If Different From Surface

| UL or lot No. | Section | Township | Range | Lot Idn | Feet from the | North/South line | Feet from the | East/West line | County |
|---------------|---------|----------|-------|---------|---------------|------------------|---------------|----------------|--------|
| | | | | | | | | | |

| | | | |
|-------------------------------|-----------------|--------------------|-----------------------------|
| Dedicated Acres 160 | Joint or Infill | Consolidation Code | Order No. R-10829 |
|-------------------------------|-----------------|--------------------|-----------------------------|

NO ALLOWABLE WILL BE ASSIGNED TO THIS COMPLETION UNTIL ALL INTERESTS HAVE BEEN CONSOLIDATED
OR A NON-STANDARD UNIT HAS BEEN APPROVED BY THE DIVISION



OPERATOR CERTIFICATION

I hereby certify the the information contained herein is true and complete to the best of my knowledge and belief.

Rory Edwards
Signature
Rory Edwards
Printed Name
Production Supervisor
Title
10/14/97
Date

SURVEYOR CERTIFICATION

I hereby certify that the well location shown on this plat was plotted from field notes of actual surveys made by me or under my supervision, and that the same is true and correct to the best of my belief.

APRIL 3, 1997

Date Surveyed
Signature & Seal of Professional Surveyor
Ronald J. Edson
Professional Surveyor
10-03-97
97-11-0592
Certificate No. **JOHN W. WEST**
RONALD J. EDSON
12641