

District I
PO Box 1980, Hobbs, NM 88241-1980
District II
PO Drawer DD, Artesia, NM 88211-0719
District III
1000 Rio Brazos Rd., Aztec, NM 87410
District IV
PO Box 2088, Santa Fe, NM 87504-2088

State of New Mexico
Energy, Minerals & Natural Resources Department

OIL CONSERVATION DIVISION
PO Box 2088
Santa Fe, NM 87504-2088

Form C-101
Revised February 10, 1994
Instructions on back
Submit to Appropriate District Office
State Lease - 6 Copies
Fee Lease - 5 Copies

☐ AMENDED REPORT

APPLICATION FOR PERMIT TO DRILL, RE-ENTER, DEEPEN, PLUGBACK, OR ADD A ZONE

¹ Operator Name and Address. Matador Operating Company 8340 Meadow Road #158 Dallas, TX 75231		¹ OGRID Number 014245
		¹ API Number 30-025-34309
¹ Property Code 21451	¹ Property Name New Mexico L-61 State	¹ Well No. 2

⁷ Surface Location

UL or lot no.	Section	Township	Range	Lot Idn	Feet from the	North/South line	Feet from the	East/West line	County
A	6	10S	33E	①	593	North	668	East	Lea

⁸ Proposed Bottom Hole Location If Different From Surface

UL or lot no.	Section	Township	Range	Lot Idn	Feet from the	North/South line	Feet from the	East/West line	County

¹¹ Proposed Pool 1 Flying M San Andres	¹¹ Proposed Pool 2
--	-------------------------------

¹¹ Work Type Code N	¹¹ Well Type Code O	¹¹ Cable/Rotary Rotary	¹¹ Lease Type Code S	¹¹ Ground Level Elevation 4214
¹¹ Multiple No	¹¹ Proposed Depth 4500	¹¹ Formation San Andres	¹¹ Contractor Norton	¹¹ Spud Date 2-25-98

²¹ Proposed Casing and Cement Program

Hole Size	Casing Size	Casing weight/foot	Setting Depth	Sacks of Cement	Estimated TOC
11" of 12-1/4"	8-5/8	24#	350	160sx	Surface
7-7/8"	5-1/2	15.5#	4500	1000 sx	Surface

¹¹ Describe the proposed program. If this application is to DEEPEN or PLUG BACK give the data on the present productive zone and proposed new productive zone. Describe the blowout prevention program, if any. Use additional sheets if necessary.

Drill 4500' San Andres test. Drill 11" or 12-1/4" hole to 350' and run 8-5/8" casing. Circulate cement to surface. NU double ram BOP assembly and test to 1000 psi. Drill 7-7/8" hole to 4500' and log well. Run 5-1/2" casing and cement to surface.

Permit Expires 1 Year From Approval
Date Unless Drilling Underway

¹¹ I hereby certify that the information given above is true and complete to the best of my knowledge and belief.

Signature:

Printed name:

Title:

Date:

John W. Bell

Drilling Manager

2-11-98

Phone: 214-987-7144

OIL CONSERVATION DIVISION

Approved by:

ORIGINAL SIGNED BY CHRIS WILLIAMS
DISTRICT SUPERVISOR

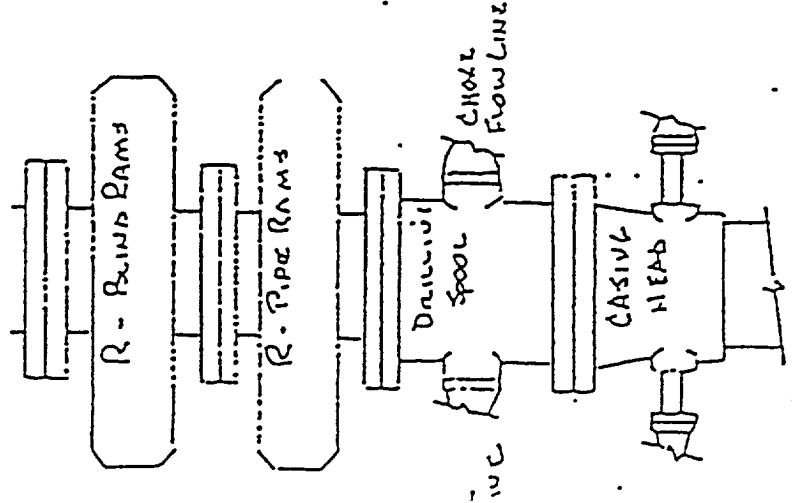
Approval Date:

Expiration Date:

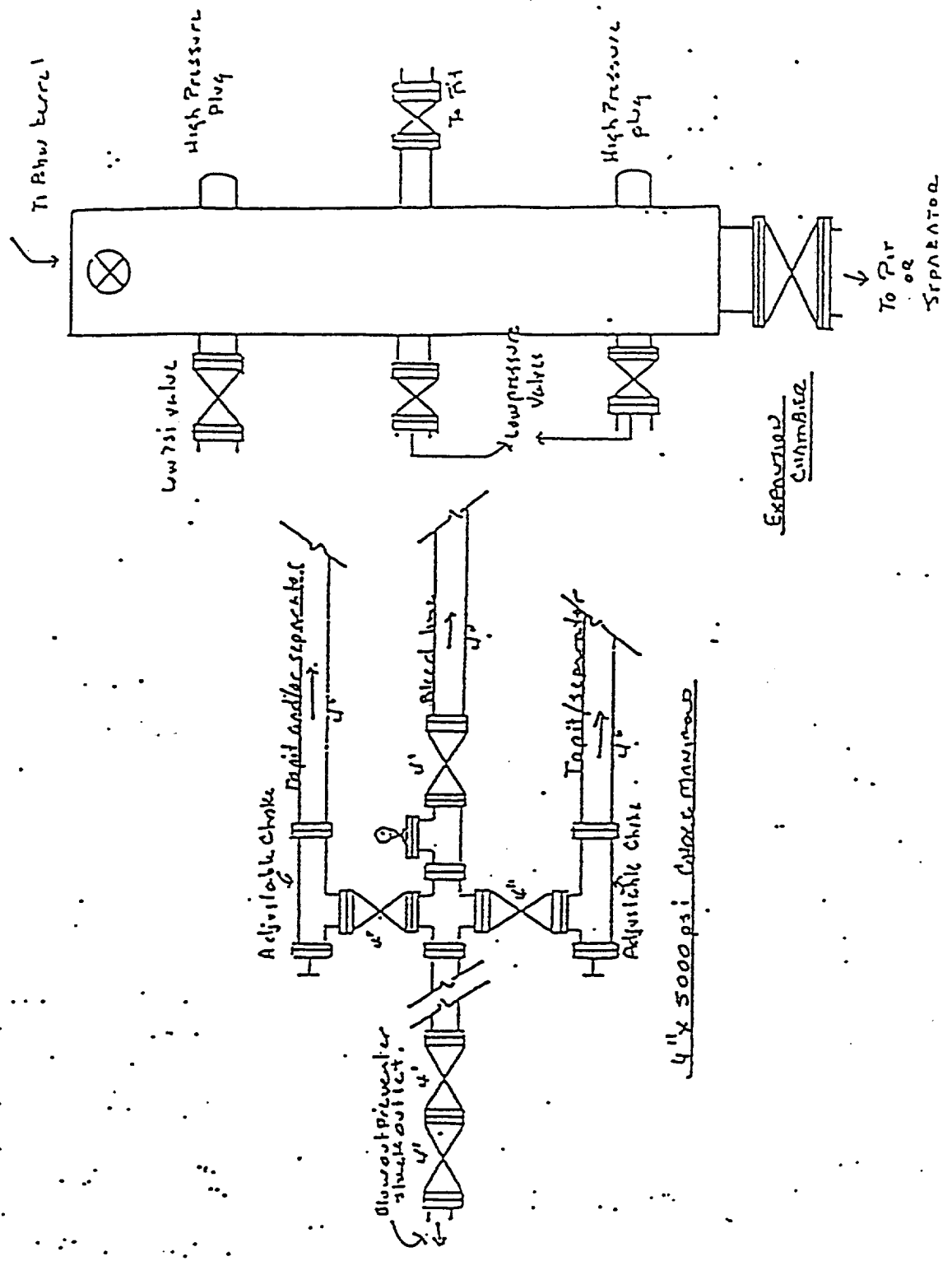
Conditions of Approval:

Attached ☐

Blowout Preventer
 Matador Operating Company
 New Mexico L-61 State #2
 593' FNL' 668' FEL
 Sec 6-10S-33E
 Lea County, New Mexico



5000 PSI
 WORKING PRESSURE



DISTRICT I
P. O. Box 1980
Hobbs, NM 88241-1980

State of New Mexico
Energy, Minerals, and Natural Resources Department

Form C-102
Revised 02-10-94

Instructions on back

DISTRICT II
P. O. Drawer DD
Artesia, NM 88211-0719

OIL CONSERVATION DIVISION
P. O. Box 2088
Santa Fe, New Mexico 87504-2088

Submit to the Appropriate
District Office
State Lease - 4 copies
Fee Lease - 3 copies

DISTRICT III
1000 Rio Brazos Rd.
Aztec, NM 87410

☐ AMENDED REPORT

DISTRICT IV
P. O. Box 2088
Santa Fe, NM 87507-2088

WELL LOCATION AND ACREAGE DEDICATION PLAT

1 API Number 30-025-3439		2 Pool Code 24620		3 Pool Name Flying M San Andres					
4 Property Code 21451		5 Property Name NEW MEXICO L-61 STATE						6 Well Number 2	
7 OGRID No. 014245		8 Operator Name MATADOR OPERATING CO.						9 Elevation 4214'	
10 SURFACE LOCATION									
UL or lot no. A	Section 6	Township 10 SOUTH	Range 33 EAST, N.M.P.M.	Lot Ida	Feet from the 593'	North/South line NORTH	Feet from the 668'	East/West line EAST	County LEA
11 BOTTOM HOLE LOCATION IF DIFFERENT FROM SURFACE									
UL or lot no.	Section	Township	Range	Lot Ida	Feet from the	North/South line	Feet from the	East/West line	County
12 Dedicated Acres 80		13 Joint or Infill		14 Consolidation Code		15 Order No.			
NO ALLOWABLE WELL BE ASSIGNED TO THIS COMPLETION UNTIL ALL INTERESTS HAVE BEEN CONSOLIDATED OR A NON-STANDARD UNIT HAS BEEN APPROVED BY THE DIVISION									
<div>16</div>						OPERATOR CERTIFICATION I hereby certify that the information contained herein is true and complete to the best of my knowledge and belief. Printed Name R. F. Burke Title Vice President Date 2-18-98			
						SURVEYOR CERTIFICATION I hereby certify that the well location shown on this plat was plotted from field notes of actual surveys made by me or under my supervision, and that the same is true and correct to the best of my belief.			
						Date of Survey FEBRUARY 10, 1998			
						Signature and Seal of Professional Surveyor Certificate No. ROGER M. ROBBINS P.S. #12128			
						JOB #56723 / 147 NE / JSJ			

MATADOR PETROLEUM CORPORATION

SUITE 158, PECAN CREEK
8340 MEADOW ROAD
DALLAS, TEXAS 75231-3751
(214) 987-3650
FAX: (214) 691-1415

February 18, 1998

Oil Conservation Division
P. O. Box 1980
Hobbs, NM 88241-1980

Re: New Mexico L-61 State #2
593' FNL; 668' FEL
Sec 6-10S-33E
Lea County, New Mexico

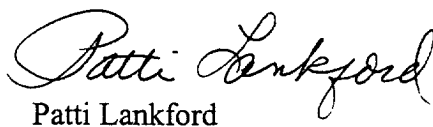
Gentlemen:

Matador proposes drilling the referenced well at the location shown. The target field is the Flying M San Andres which requires an 80 acre proration unit. The New Mexico L-61 State #1 is located 660' FNL; 1980' FEL of the same section with the N/2 of the quarter/quarter as the proration unit. The proposed well is within this previously dedicated 80 acres. The proposed well is more than 330' from the currently producing #1 well.

Matador requests approval for the application to drill the #2 well whereby the two wells will share the proration unit and allowable.

A plat showing the location and dedicated acreage for the #1 well is enclosed for reference. The Application For Permit to Drill the #2 well along with a BOP diagram and c-102 are also enclosed.

Very truly yours,


Patti Lankford

Enclosures

NEW MEXICO OIL CONSERVATION COMMISSION
WELL LOCATION AND ACREAGE DEDICATION PLAT

Form C-102
Supersedes C-128
Effective 1-1-65

All distances must be from the outer boundaries of the Section

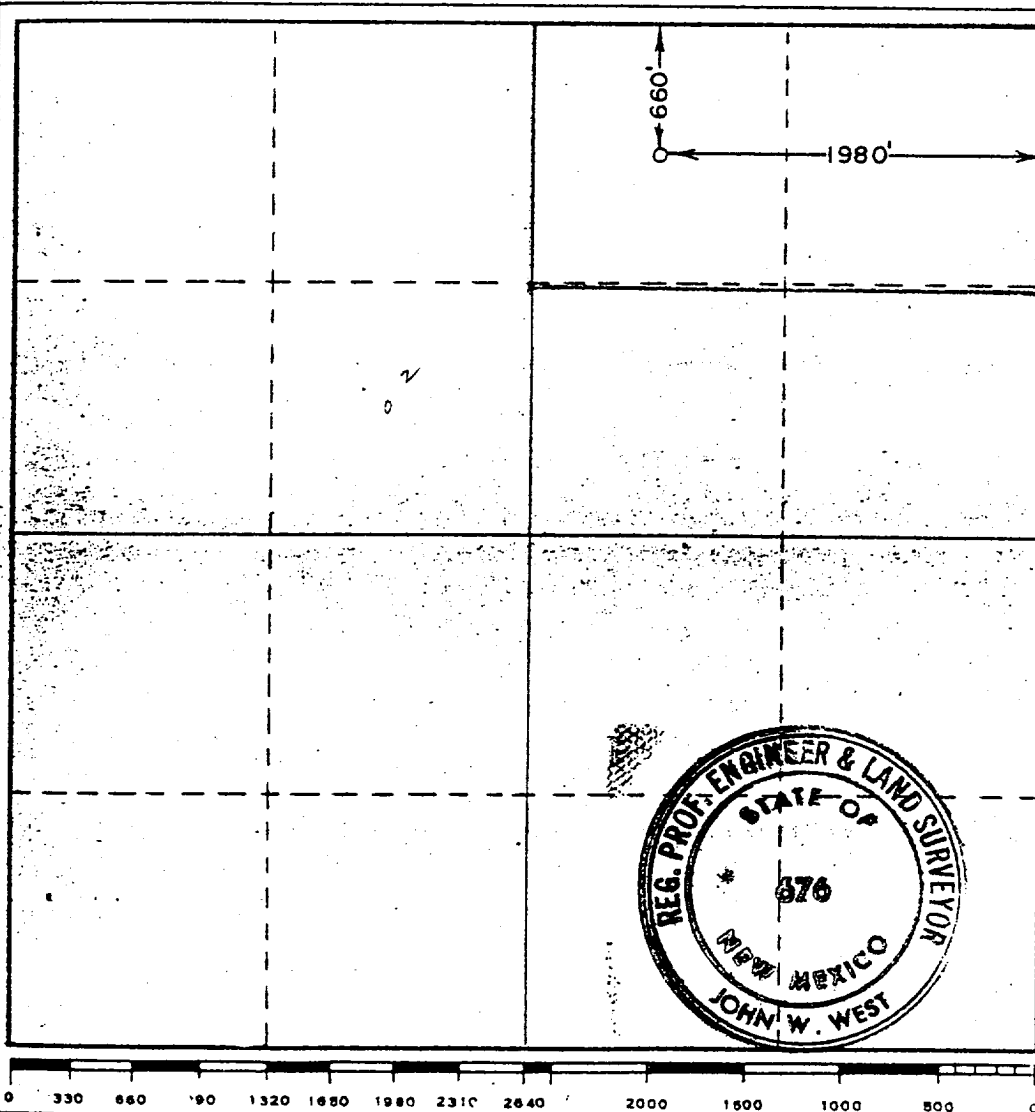
Operator Victory Petroleum Company			Lease New Mexico State Lease L-61		Well No. 1
Unit Letter B	Section 6	Township 10 South	Range 33 East	County Lea	
Actual Footage Location of Well: 660 feet from the North line and 1980 feet from the East line					
Ground Level Elev.	Producing Formation		Pool	Dedicated Acreage: Acres	

1. Outline the acreage dedicated to the subject well by colored pencil or hachure marks on the plat below.
2. If more than one lease is dedicated to the well, outline each and identify the ownership thereof (both as to working interest and royalty).
3. If more than one lease of different ownership is dedicated to the well, have the interests of all owners been consolidated by communitization, unitization, force-pooling, etc?

☐ Yes ☐ No If answer is "yes," type of consolidation _____

If answer is "no," list the owners and tract descriptions which have actually been consolidated. (Use reverse side of this form if necessary.) _____

No allowable will be assigned to the well until all interests have been consolidated (by communitization, unitization, forced-pooling, or otherwise) or until a non-standard unit, eliminating such interests, has been approved by the Commission.



CERTIFICATION

I hereby certify that the information contained herein is true and complete to the best of my knowledge and belief.

Name _____

Position _____

Company _____

Date _____

I hereby certify that the well location shown on this plat was plotted from field notes of actual surveys made by me or under my supervision, and that the same is true and correct to the best of my knowledge and belief.

Date Surveyed

September 25, 1972

Registered Professional Engineer
and/or Land Surveyor

John W. West
Certificate No. **676**