

District I
PO Box 1980, Hobbs, NM 88241-1980
District II
811 South First, Artesia, NM 88210
District III
1000 Rio Brazos Rd., Aztec, NM 87410
District IV
2040 South Pacheco, Santa Fe, NM 87505

State of New Mexico
Energy, Minerals & Natural Resources Department

OIL CONSERVATION DIVISION
2040 South Pacheco
Santa Fe, NM 87505

Form C-101
Revised October 18, 1994
Instructions on back
Submit to Appropriate District Office
State Lease - 6 Copies
Fee Lease - 5 Copies

☐ AMENDED REPORT

APPLICATION FOR PERMIT TO DRILL, RE-ENTER, DEEPEN, PLUGBACK, OR ADD A ZONE

¹ Operator Name and Address. YATES PETROLEUM CORPORATION 105 South Fourth Street Artesia, New Mexico 88210		² OGRID Number 025575
		³ API Number 30 - 0 25-34790
⁴ Property Code 25120	⁵ Property Name East Sand Springs Unit	⁶ Well No. 1

⁷ Surface Location

UL or lot no.	Section	Township	Range	Lot Idn	Feet from the	North/South line	Feet from the	East/West line	County
L	5	11S	35E		1000'	North	660'	West	Lea

⁸ Proposed Bottom Hole Location If Different From Surface

UL or lot no.	Section	Township	Range	Lot Idn	Feet from the	North/South line	Feet from the	East/West line	County
⁹ Proposed Pool 1 Sand Springs Atoka, Morrow					¹⁰ Proposed Pool 2				

¹¹ Work Type Code N	¹² Well Type Code G	¹³ Cable/Rotary R	¹⁴ Lease Type Code S	¹⁵ Ground Level Elevation 4155'
¹⁶ Multiple No	¹⁷ Proposed Depth 12370'	¹⁸ Formation Morrow / Mississippian	¹⁹ Contractor Not determined	²⁰ Spud Date ASAP

²¹ Proposed Casing and Cement Program

Hole Size	Casing Size	Casing weight/foot	Setting Depth	Sacks of Cement	Estimated TOC
14 3/4"	11 3/4"	42#	400'	400 sx	Circulate
11"	8 5/8"	32#	4200'	1200 sx	Circulate
7 7/8"	5 1/2"	17#	12370'	900 sx	TOC-7300'

²² Describe the proposed program. If this application is to DEEPEN or PLUG BACK give the data on the present productive zone and proposed new productive zone. Describe the blowout prevention program, if any. Use additional sheets if necessary.
Yates Petroleum Corporation proposes to drill and test the Mississippian formation and intermediate formations. Approximately 400' of surface casing will be set and cement circulated. Intermediate casing will be set to approximately 4200' and cement circulated. If commercial, production casing will be run and cemented back to the TOC at 7300' with adequate cover, perforated and stimulated as needed for production.
MUD PROGRAM: 0-400' FW Gel; 400'-4200' Cut Brine to Brine; 4200'-7800' Cut Brine; 7800'-11500' Brine/Salt Gel/Diesel; 11500'-12370' Salt Gel/Starch.
BOPE PROGRAM: 5000# BOPE will be installed on the 8 5/8" casing and tested daily for operational.

²³ I hereby certify that the information given above is true and complete to the best of my knowledge and belief. Signature: <i>Ken Beardemphl</i>		OIL CONSERVATION DIVISION	
Printed name: Ken Beardemphl		Approved by: ORIGINAL SIGNED BY	
Title: Landman		Title: GARY WINK FIELD REP. II	
Date: December 6, 1999		Approval Date: DEC 11 1999	Expiration Date:
Phone: (505) 748-1471		Conditions of Approval: Attached <input type="checkbox"/>	

Permit Expires 1 Year From Approval
Date Unless Drilling Underway

DISTRICT II

P.O. Drawer DD, Artesia, NM 88210

OIL CONSERVATION DIVISION

P.O. Box 2088

Santa Fe, New Mexico 87504-2088

DISTRICT III

1000 Rio Brazos Rd., Artec, NM 87410

☐ AMENDED REPORT

WELL LOCATION AND ACREAGE DEDICATION PLAT

API Number 30-025-34790	Pool Code 84871	Pool Name Sand Spring
Property Code 25/20	Property Name EAST SAND SPRINGS UNIT	Well Number 1
OGRID No. 025575	Operator Name YATES PETROLEUM CORPORATION	Elevation 4155

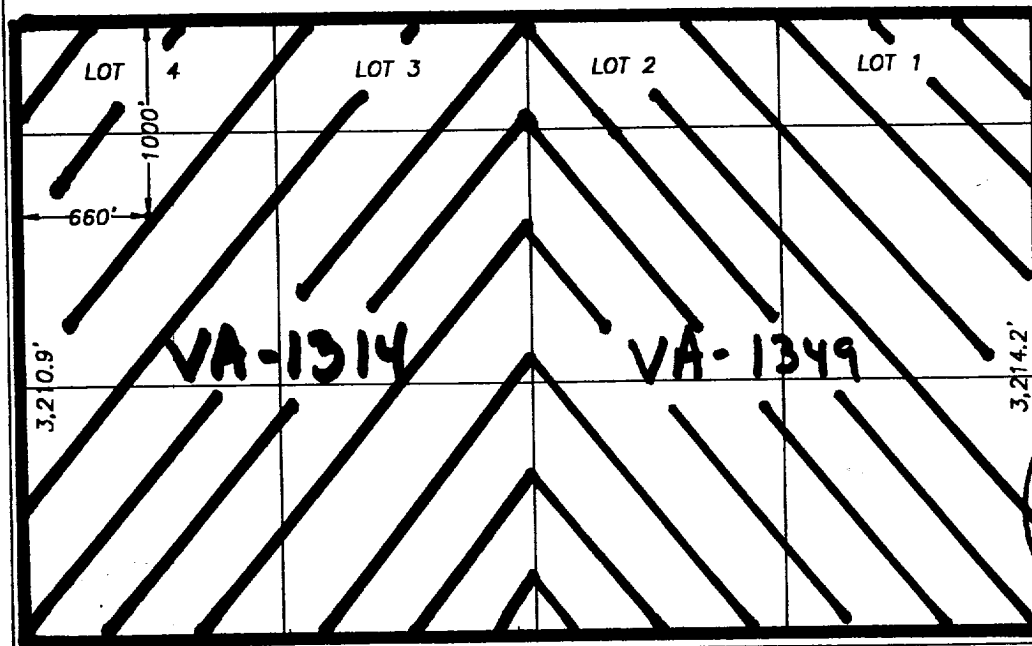
Surface Location

UL or lot No.	Section	Township	Range	Lot Idn	Feet from the	North/South line	Feet from the	East/West line	County
L	5	11S	35E		1000	NORTH	660	WEST	LEA

Bottom Hole Location If Different From Surface

UL or lot No.	Section	Township	Range	Lot Idn	Feet from the	North/South line	Feet from the	East/West line	County
Dedicated Acres 389.4	Joint or Infill	Consolidation Code	Order No.						

NO ALLOWABLE WILL BE ASSIGNED TO THIS COMPLETION UNTIL ALL INTERESTS HAVE BEEN CONSOLIDATED
OR A NON-STANDARD UNIT HAS BEEN APPROVED BY THE DIVISION



OPERATOR CERTIFICATION

I hereby certify the the information
contained herein is true and complete to the
best of my knowledge and belief.

Signature

Printed Name

Ken Beardemphl

Title

Landman

Date

December 6, 1999

SURVEYOR CERTIFICATION

I hereby certify that the well location shown
on this plat was plotted from field notes of
actual surveys made by me or under my
supervision, and that the same is true and
correct to the best of my belief.

11/12/1999

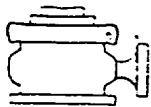
Date Surveyed

Signature & Seal of
Professional Surveyor

Certificate No. H-103640 L. Jones RLS 3640
SAND SPRINGS 1 DISK 15
GENERAL SURVEYING COMPANY

ELF 2/12/03
ABOVE DATE DOES NOT
INDICATE WHEN
CONFIDENTIAL LOGS
WILL BE RELEASED

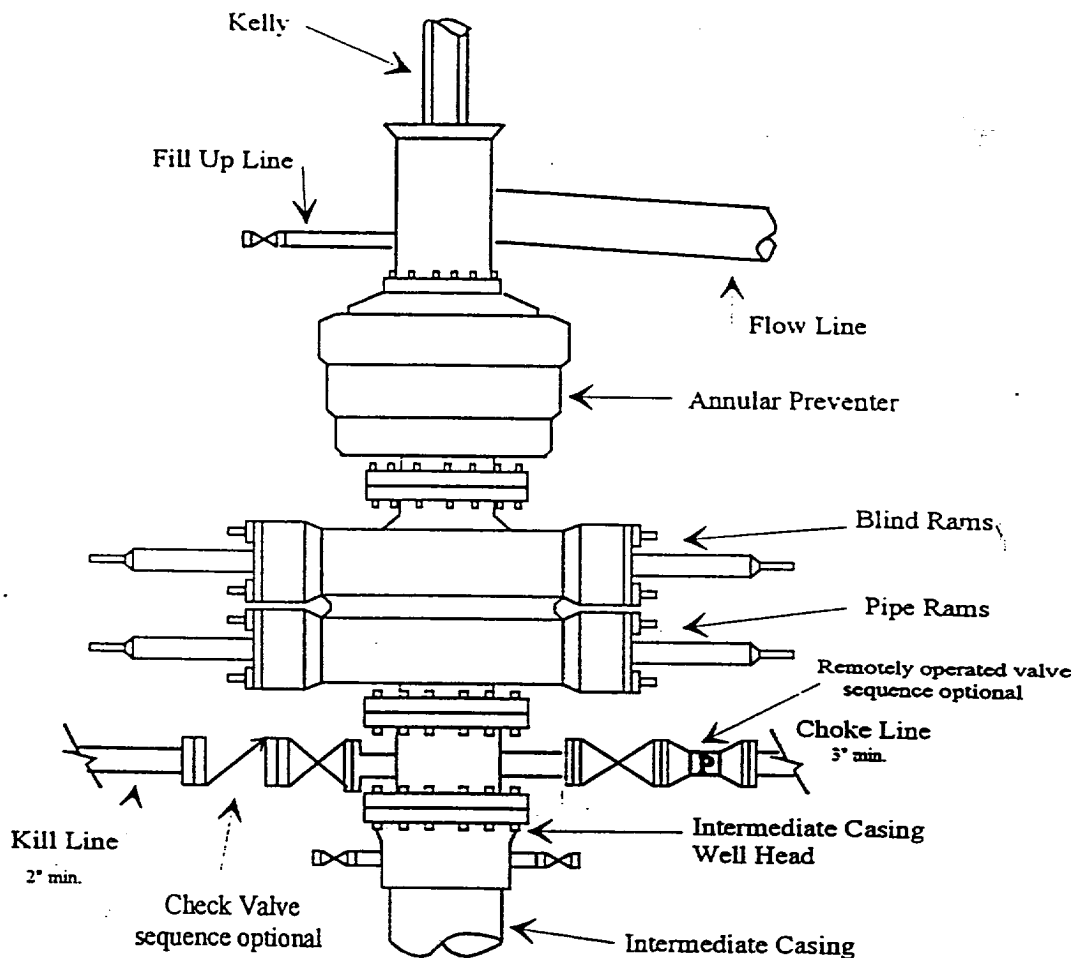
3
CONFIDENTIAL
2/12/03



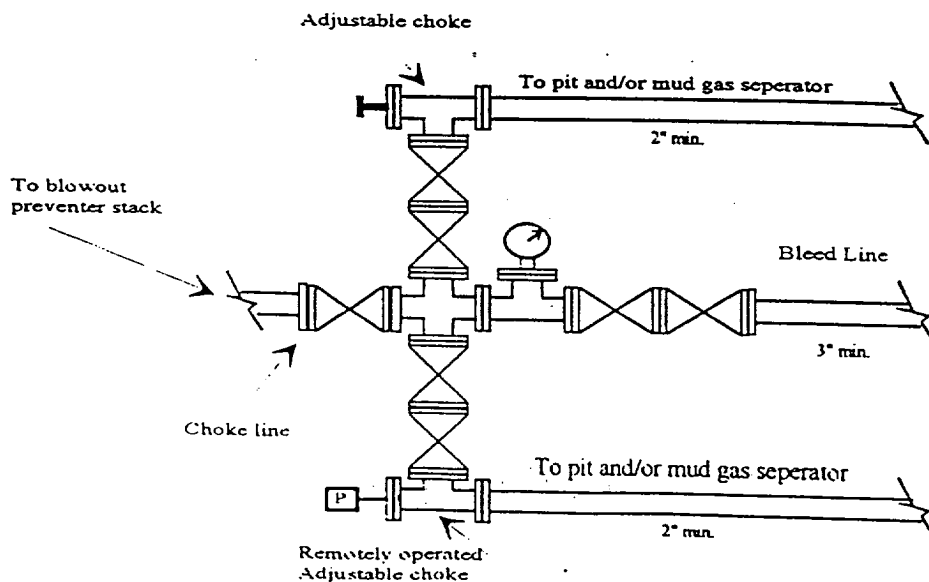
Yates Petroleum Corporation

BOP-4

Typical 5,000 psi Pressure System Schematic Annular with Double Ram Preventer Stack



Typical 5,000 psi choke manifold assembly with at least these minimum features



ABOVE DATE DOES NOT
INDICATE WHEN
CONFIDENTIAL LOGS
WILL BE RELEASED

ELF

2/12/02

CONFIDENTIAL
2/12/02