

District I  
1625 N. French Dr., Hobbs, NM 88240  
District II  
811 South First, Artesia, NM 88210  
District III  
1000 Rio Brazos Road, Aztec, NM 87410  
District IV  
2040 South Pacheco, Santa Fe, NM 87505

State of New Mexico  
Energy Minerals and Natural Resources

Oil Conservation Division  
2040 South Pacheco  
Santa Fe, NM 87505

Form C-101  
Revised March 17, 1999

Submit to appropriate District Office  
State Lease - 6 Copies  
Fee Lease - 5 Copies

☐ AMENDED REPORT

APPLICATION FOR PERMIT TO DRILL, RE-ENTER, DEEPEN, PLUGBACK, OR ADD A ZONE

<sup>1</sup> Operator Name and Address RICKS EXPLORATION, INC. 210 PARK AVENUE 3000 OKLAHOMA TOWER OKLAHOMA CITY, OKLAHOMA 73102		<sup>2</sup> OGRID Number 168489
		<sup>3</sup> API Number 30-025-35230
<sup>4</sup> Property Code 26730	<sup>5</sup> Property Name BIG KAHUNA	<sup>6</sup> Well No. 1

<sup>7</sup> Surface Location									
UL or lot no.	Section	Township	Range	Lot Idn	Feet from the	North/South line	Feet from the	East/West line	County
KJ	21	9S	37E		1553'	SOUTH	1515'	EAST	LEA

<sup>8</sup> Proposed Bottom Hole Location If Different From Surface									
UL or lot no.	Section	Township	Range	Lot Idn	Feet from the	North/South line	Feet from the	East/West line	County
<sup>9</sup> Proposed Pool 1 SAWYER DEVONIAN WEST (96744)					<sup>10</sup> Proposed Pool 2				

<sup>11</sup> Work Type Code N	<sup>12</sup> Well Type Code O	<sup>13</sup> Cable/ Rotary R	<sup>14</sup> Lease Type Code P	<sup>15</sup> Ground Level Elevation 3979'
<sup>16</sup> Multiple no	<sup>17</sup> Proposed Depth 12,500'	<sup>18</sup> Formation DEVONIAN	<sup>19</sup> Contractor PATTERSON	<sup>20</sup> Spud Date WHEN APPROVED

<sup>21</sup> Proposed Casing and Cement Program					
Hole Size	Casing Size	Casing weight/foot	Setting Depth	Sacks of Cement	Estimated TOC
25"	20"	NA	40'	Redi-mix	SURFACE
17½"	13 3/8"	54.5	500'	545 Sx.	SURFACE
12¼"	9 5/8"	36	4500'	1150 Sx.	SURFACE
7 7/8"	5½"	17	12,500'		

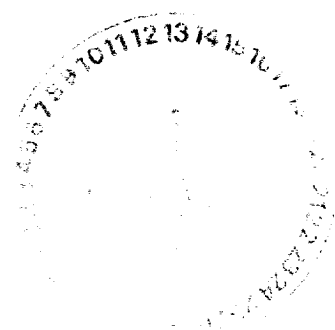
<sup>22</sup> Describe the proposed program. If this application is to DEEPEN or PLUG BACK, give the data on the present productive zone and proposed new productive zone. Describe the blowout prevention program, if any. Use additional sheets if necessary.

1. Drill 25" hole to 40'. Set 40' of 20" conductor and cement to surface with Redi-mix.
2. Drill 17½" hole to 500'. Run and set 500' of 13 3/8" 54.5# J-55 ST&C casing. Cement with 545 Sx. of Class "C" cement + 2% CaCl, circulate cement to surface.
3. Drill 12¼" hole to 4500'. Run and set 4500' of 9 5/8" 36# J-55 ST&C casing. Cement with 900 Sx. of Halco Light + additives, tail in with 250 Sx. of Class "C" cement + ½# Flocele/Sx. circulate cement to surface.
4. Drill 7 7/8" hole to 12,500'. Run and set 5½" casing as follows: 2750' of P-110 17# LT&C, 7000' of N-80 17# LT&C, 2750' of N-80 17# Buttress thread. Cement 450 Sx. of Class "H" Premium Plus cement + additives, estimate top of cement 10,000'.

Permit Expires 1 Year From Approval  
Date Unless Drilling Underway

NSL-4517

<sup>23</sup> I hereby certify that the information given above is true and complete to the best of my knowledge and belief. Signature: <i>Joe T. Janica</i> Printed name: Joe T. Janica Title: Agent Date: 10/11/00		OIL CONSERVATION DIVISION Approved by: <i>[Signature]</i> Title: <i>[Signature]</i> Approval Date: NOV 10 2 2000 Expiration Date: <i>[Signature]</i> Conditions of Approval: <i>[Signature]</i>	
--	--	--	--



DISTRICT I  
P.O. Box 1880, Hobbs, NM 88241-1880

State of New Mexico  
Energy, Minerals and Natural Resources Department

Form C-102  
Revised February 10, 1994  
Submit to Appropriate District Office  
State Lease - 4 Copies  
Fee Lease - 3 Copies

DISTRICT II  
P.O. Drawer DD, Artesia, NM 88211-0719

DISTRICT III  
1000 Rio Brazos Rd., Aztec, NM 87410

DISTRICT IV  
P.O. Box 2088, Santa Fe, N.M. 87504-2088

OIL CONSERVATION DIVISION  
P.O. Box 2088  
Santa Fe, New Mexico 87504-2088

☐ AMENDED REPORT

WELL LOCATION AND ACREAGE DEDICATION PLAT

API Number <b>30-025-35230</b>	Pool Code <b>96744</b>	Pool Name <b>SAWYER DEVONIAN, WEST</b>
Property Code <b>26730</b>	Property Name <b>BIG KAHUNA</b>	Well Number <b>1</b>
GRID No. <b>168489</b>	Operator Name <b>RICK'S EXPLORATION</b>	Elevation <b>3979</b>

Surface Location

UL or lot No. <b>KJ</b>	Section <b>21</b>	Township <b>9 S</b>	Range <b>37 E</b>	Lot Idn	Feet from the <b>1553</b>	North/South line <b>SOUTH</b>	Feet from the <b>1515</b>	East/West line <b>EAST</b>	County <b>LEA</b>
----------------------------	----------------------	------------------------	----------------------	---------	------------------------------	----------------------------------	------------------------------	-------------------------------	----------------------

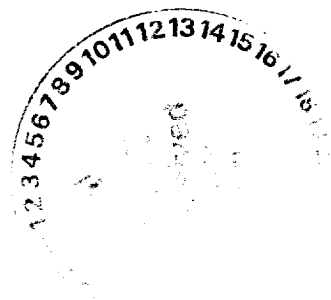
Bottom Hole Location If Different From Surface

UL or lot No.	Section	Township	Range	Lot Idn	Feet from the	North/South line	Feet from the	East/West line	County
---------------	---------	----------	-------	---------	---------------	------------------	---------------	----------------	--------

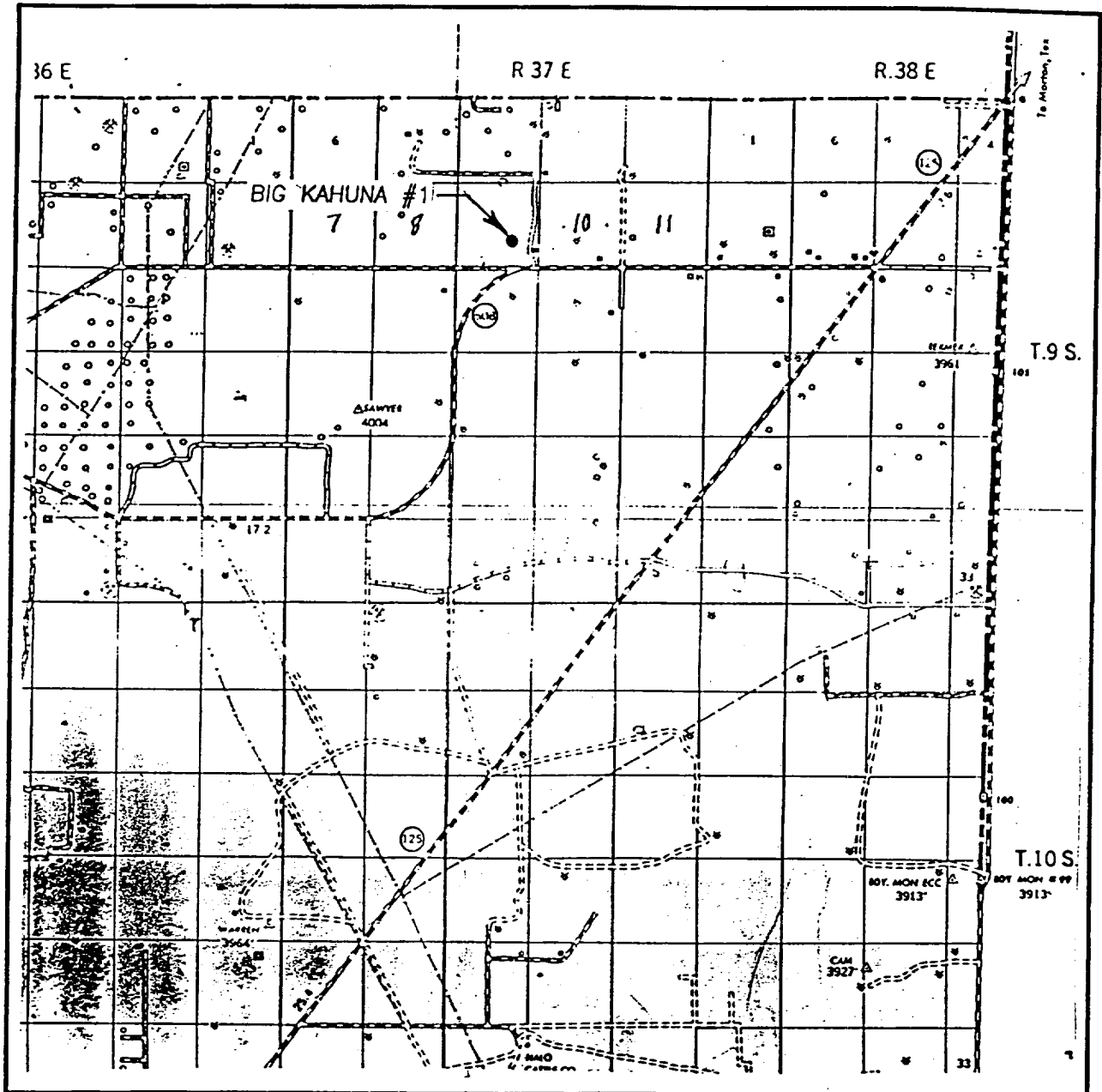
Dedicated Acres <b>40</b>	Joint or Infill	Consolidation Code	Order No.
------------------------------	-----------------	--------------------	-----------

NO ALLOWABLE WILL BE ASSIGNED TO THIS COMPLETION UNTIL ALL INTERESTS HAVE BEEN CONSOLIDATED  
OR A NON-STANDARD UNIT HAS BEEN APPROVED BY THE DIVISION

	<b>OPERATOR CERTIFICATION</b>  I hereby certify the the information contained herein is true and complete to the best of my knowledge and belief.   Signature Joe T. Janica Printed Name Agent Title 10/11/00 Date
	<b>SURVEYOR CERTIFICATION</b>  I hereby certify that the well location shown on this plat was plotted from field notes of actual surveys made by me or under my supervision, and that the same is true and correct to the best of my belief.  OCTOBER 3, 2000 Date Surveyed LMP Signature & Seal of Professional Surveyor  Certificate No. - RONALD J. EIDSON 3239 GARY EIDSON 12641



# VICINITY MA.



SCALE: 1" = 2 MILES

SEC. 21 TWP. 9-S RGE. 37-E

SURVEY N.M.P.M.

COUNTY LEA

DESCRIPTION 1553' FSL & 1515' FEL

ELEVATION 3979

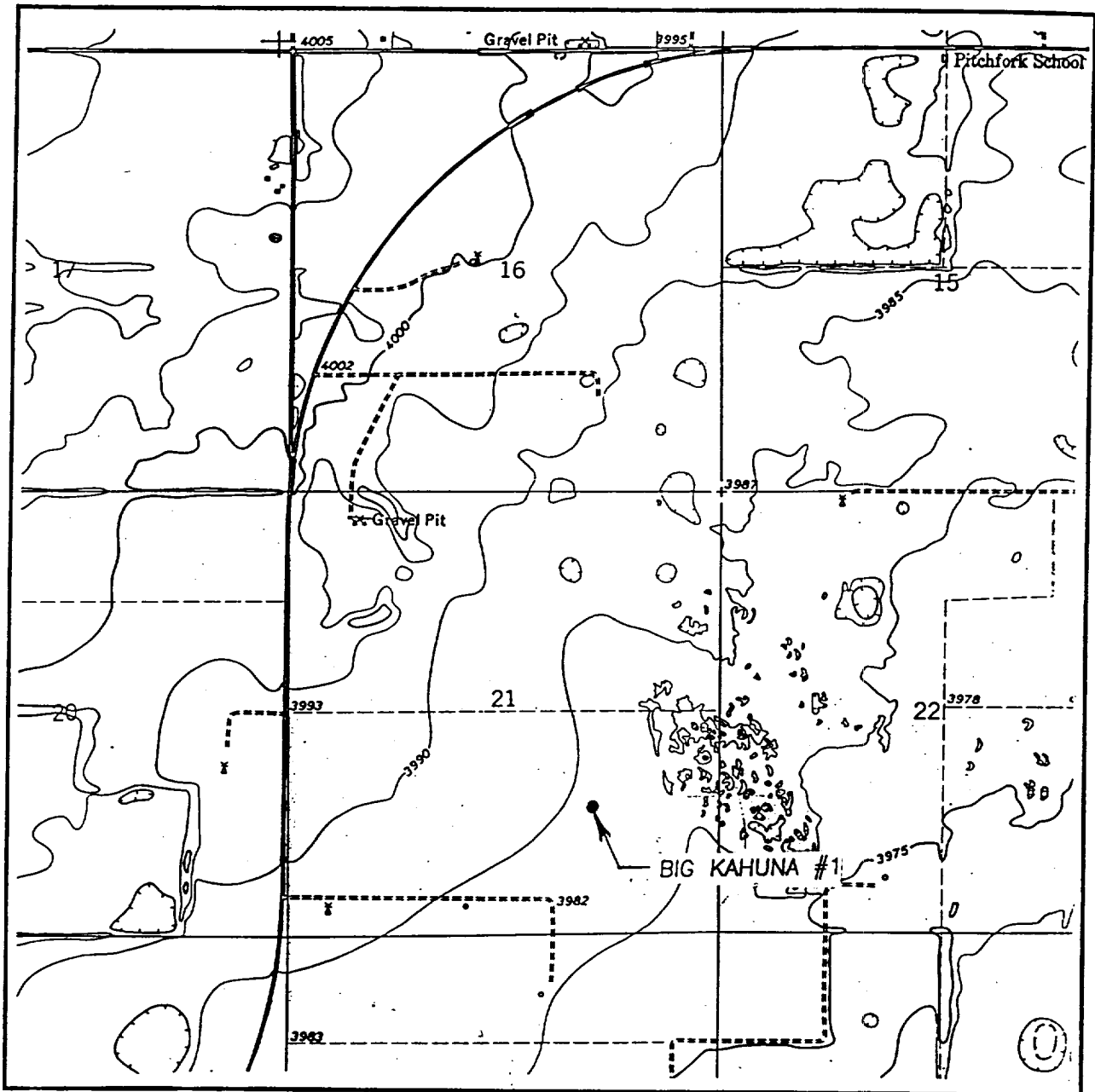
OPERATOR RICK'S EXPLORATION

LEASE BIG KAHUNA

JOHN WEST SURVEYING  
HOBBS, NEW MEXICO  
(505) 393-3117



# LOCATION VERIFICATION MAP



SCALE: 1" = 2000'

CONTOUR INTERVAL:  
BLED SOE SW, N.M. - 5'

SEC. 21 TWP. 9-S RGE. 37-E

SURVEY N.M.P.M.

COUNTY LEA

DESCRIPTION 1553' FSL & 1515' FEL

ELEVATION 3979

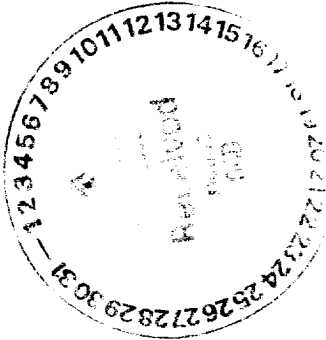
OPERATOR RICK'S EXPLORATION

LEASE BIG KAHUNA

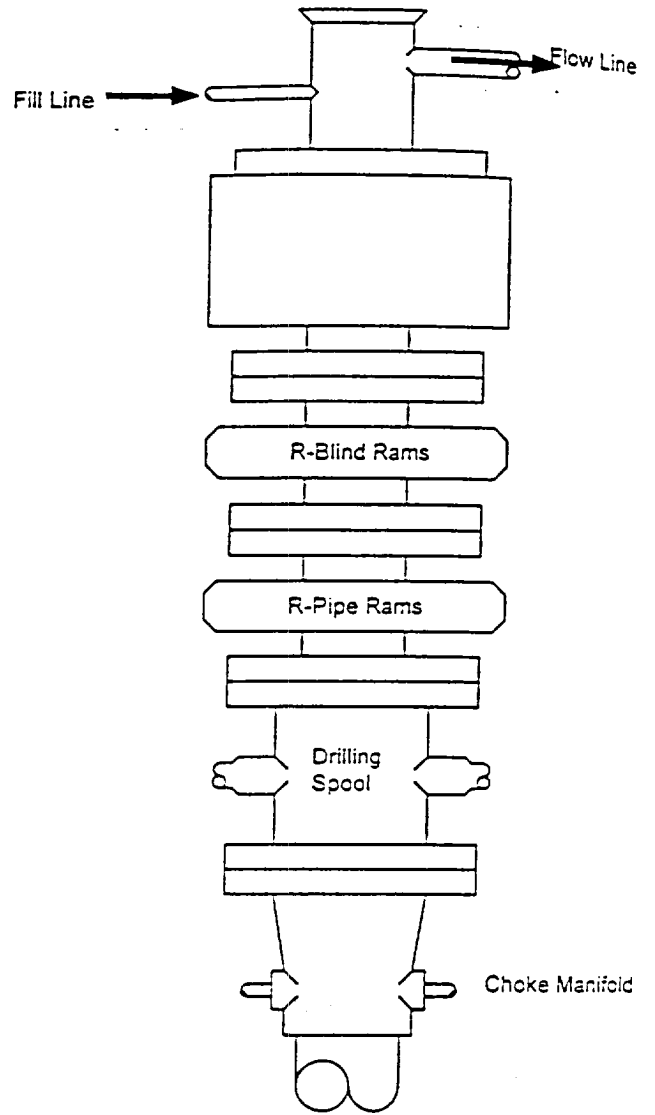
U.S.G.S. TOPOGRAPHIC MAP

BLED SOE SW, N.M.

JOHN WEST SURVEYING  
HOBBS, NEW MEXICO  
(505) 393-3117

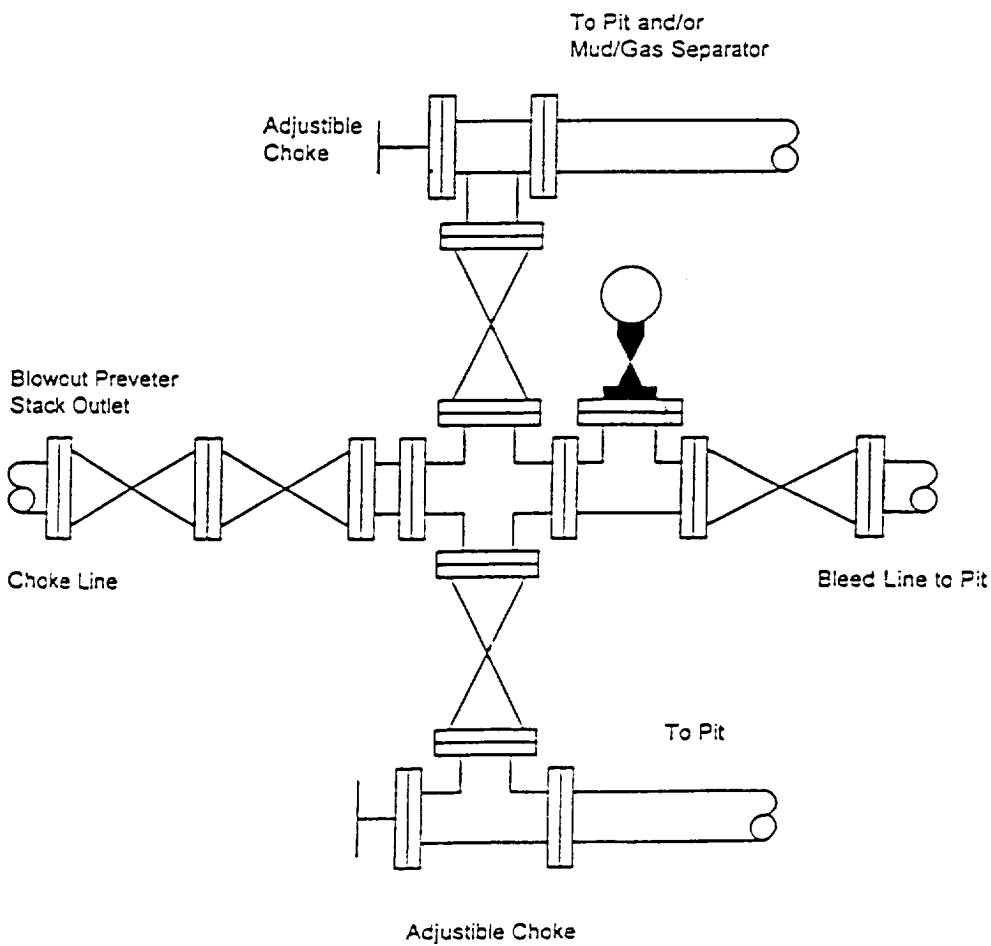






Type 900 Series  
3000 psi WP.

Choke Manifold Assembly for 3M WP System







# NEW MEXICO ENERGY, MINERALS and NATURAL RESOURCES DEPARTMENT

**GARY E. JOHNSON**  
Governor  
**Jennifer A. Salisbury**  
Cabinet Secretary

October 24, 2000

**Lori Wrotenbery**  
Director  
Oil Conservation Division

**KCS Medallion Resources, Inc.**  
c/o James Bruce  
P. O. Box 1056  
Santa Fe, New Mexico 87504

**Telefax No. (505) 982-2151**

*Administrative Order NSL-4517*

Dear Mr. Bruce:

Reference is made to the following: (i) your application dated October 12, 2000 on behalf of the operator KCS Medallion Resources, Inc. ("KCS"); and (ii) the records of the New Mexico Oil Conservation Division ("Division") in Santa Fe: all concerning KCS's request to drill its Big Kahuna Well No. 1 at an unorthodox wildcat Devonian oil well location 1553 feet from the South line and 1515 feet from the East line (Unit J) of Section 21, Township 9 South, Range 37 East, NMPM, Lea County, New Mexico.

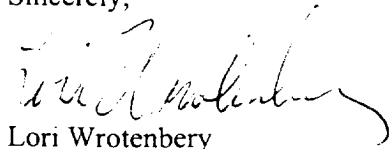
This application has been duly filed under the provisions of Division Rule 104.F, revised by Division Order No. R-11231, issued by the New Mexico Oil Conservation Commission in Case No. 12119 on August 12, 1999.

The geologic interpretation based solely on 3-D seismic data submitted therein indicates that a well drilled at the proposed unorthodox oil well location will be at a more favorable geologic position within the Devonian formation than a well drilled at a location considered to be standard within the proposed standard 40-acre oil spacing and proration unit comprising the NW/4 SE/4 of Section 21.

Further, it is our understanding that the Devonian formation underlying the S/2 of Section 21 is within a single patented fee lease in which KCS is the leasehold operator; therefore, there are no effected offsets to the subject 40-acre tract other than KCS.

By the authority granted me under the provisions of Division Rule 104.F (2), the above-described unorthodox oil well location is hereby approved.

Sincerely,

  
Lori Wrotenbery  
Director

LW/MES/kv

cc: New Mexico Oil Conservation Division - Hobbs /

ABOVE DATE DOES NOT  
INDICATE WHEN  
CONFIDENTIAL LOGS  
WILL BE RELEASED

ELF 7/18/04