

District I  
1625 N. French Dr., Hobbs, NM 88240  
District II  
811 South First, Artesia, NM 88210  
District III  
1000 Rio Brazos Road, Aztec, NM 87410  
District IV  
2040 South Pacheco, Santa Fe, NM 87505

State of New Mexico  
Energy Minerals and Natural Resources

Oil Conservation Division  
2040 South Pacheco  
Santa Fe, NM 87505

Form C-101  
Revised March 17, 1999

Submit to appropriate District Office  
State Lease - 6 Copies  
Fee Lease - 5 Copies

☐ AMENDED REPORT

**APPLICATION FOR PERMIT TO DRILL, RE-ENTER, DEEPEN, PLUGBACK, OR ADD A ZONE**

<sup>1</sup> Operator Name and Address CONCHO OIL & GAS CORP. 110 W. LOUISIAN STE 410 MIDLAND, TX 79701		<sup>2</sup> OGRID Number 193407
		<sup>3</sup> API Number 30-025-35440
<sup>3</sup> Property Code 27343	<sup>5</sup> Property Name Diamondback State	<sup>6</sup> Well No. 2

**7 Surface Location**

UL or lot no.	Section	Township	Range	Lot Idn	Feet from the	North/South line	Feet from the	East/West line	County
E	25	10S	32E		1980	NORTH	660	WEST	LEA

**8 Proposed Bottom Hole Location If Different From Surface**

UL or lot no.	Section	Township	Range	Lot Idn	Feet from the	North/South line	Feet from the	East/West line	County

**9 Proposed Pool 1**

CUERNO LARGO PENN

**10 Proposed Pool 2**

<sup>11</sup> Work Type Code N	<sup>12</sup> Well Type Code O	<sup>13</sup> Cable/Rotary R	<sup>14</sup> Lease Type Code S	<sup>15</sup> Ground Level Elevation 4306'
<sup>16</sup> Multiple S	<sup>17</sup> Proposed Depth 9600	<sup>18</sup> Formation PENN	<sup>19</sup> Contractor JW DRLG	<sup>20</sup> Spud Date 4/5/01

**21 Proposed Casing and Cement Program**

Hole Size	Casing Size	Casing weight/foot	Setting Depth	Sacks of Cement	Estimated TOC
17-1/2	13-3/8	54.5	400	330	SURF
11	8-5/8	32	3750	865	SURF
7-7/8	5-1/2	17	9600	450	7000

22 Describe the proposed program. If this application is to DEEPEN or PLUG BACK, give the data on the present productive zone and proposed new productive zone. Describe the blowout prevention program, if any. Use additional sheets if necessary.

**Concho Oil & Gas Corp. respectfully requests approval to drill the Diamondback State No. 2 well according to the following procedure:**

1. Drill 17-1/2" hole to 400' w/ spud mud. Run 13-3/8", 54.5# csg & cmt w/ 330 sx cmt back to surface.
2. NU 5000# BOP w/ annular preventor. Test BOP, annular, choke manifold, & csg to 1500#.
3. Drill 11" hole w/ native brine to 3750'. Run 8-5/8", 32# csg & cmt w/ 865 sx cmt back to surface.
4. Drill 7-7/8" hole w/ cut brine to 6700'. Mud up & drill to 9600'. Run 5-1/2", 17# csg & cmt w/ 450 sx cmt -- est. TOC @ 7000'.

23 I hereby certify that the information given above is true and complete to the best of my knowledge and belief.

Signature:

Printed name: Terri Stathem

Title: Production Analyst

Date: 3/1/01

Phone: (915) 683-7443

**OIL CONSERVATION DIVISION**

Approved by:

Title:

Approval Date:

Expiration Date:

Conditions of Approval:

Attached ☐

Permit Expires 1 Year From Approval  
Date Unless Drilling Underway

## DISTRICT I

P.O. Box 1980, Hobbs, NM 88241-1980

## State of New Mexico

Energy, Minerals and Natural Resources Department

Form C-102

Revised February 10, 1994

Submit to Appropriate District Office

State Lease - 4 Copies

Fee Lease - 3 Copies

## DISTRICT II

P.O. Drawer DD, Artesia, NM 88211-0719

## OIL CONSERVATION DIVISION

P.O. Box 2088

Santa Fe, New Mexico 87504-2088

## DISTRICT III

1000 Rio Brazos Rd., Aztec, NM 87410

## DISTRICT IV

P.O. BOX 2088, SANTA FE, N.M. 87504-2088

## WELL LOCATION AND ACREAGE DEDICATION PLAT

☐ AMENDED REPORT

API Number <b>30-025-35440</b>	Pool Code 14980	Pool Name Cuerno Largo; Penn
Property Code 27343	Property Name DIAMOND BACK STATE	
OGRID No. 193407	Operator Name CONCHO OIL & GAS Corp.	Well Number 2
Elevation 4306'		

## Surface Location

UL or lot No. E	Section 25	Township 10-S	Range 32-E	Lot Idn	Feet from the 1980	North/South line NORTH	Feet from the 660	East/West line WEST	County LEA
--------------------	---------------	------------------	---------------	---------	-----------------------	---------------------------	----------------------	------------------------	---------------

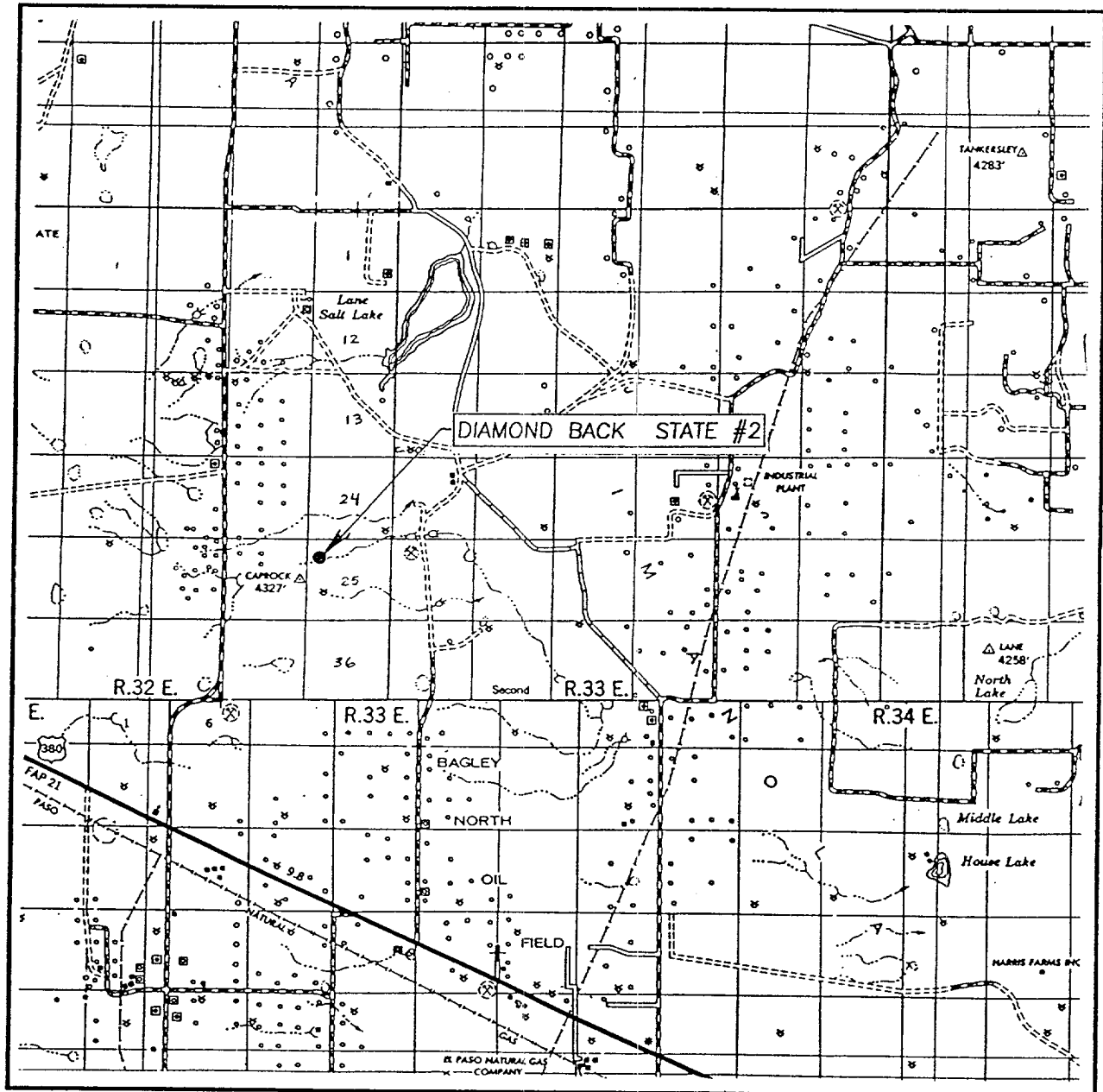
## Bottom Hole Location If Different From Surface

UL or lot No.	Section	Township	Range	Lot Idn	Feet from the	North/South line	Feet from the	East/West line	County
Dedicated Acres 40		Joint or Infill	Consolidation Code		Order No.				

NO ALLOWABLE WILL BE ASSIGNED TO THIS COMPLETION UNTIL ALL INTERESTS HAVE BEEN CONSOLIDATED  
OR A NON-STANDARD UNIT HAS BEEN APPROVED BY THE DIVISION

					<b>OPERATOR CERTIFICATION</b>  I hereby certify the the information contained herein is true and complete to the best of my knowledge and belief.   Signature Terri Stathem Printed Name Production Analyst Title 3/1/01 Date	
					<b>SURVEYOR CERTIFICATION</b>  I hereby certify that the well location shown on this plat was plotted from field notes of actual surveys made by me or under my supervision and that the same is true and correct to the best of my belief.  FEBRUARY 16, 2001 Date Surveyed Signature & Seal of Professional Surveyor  01-11-0241 Certificate No. RONALD J. EIDSON 3239 GARY EIDSON 12641	

# VICINITY MAP

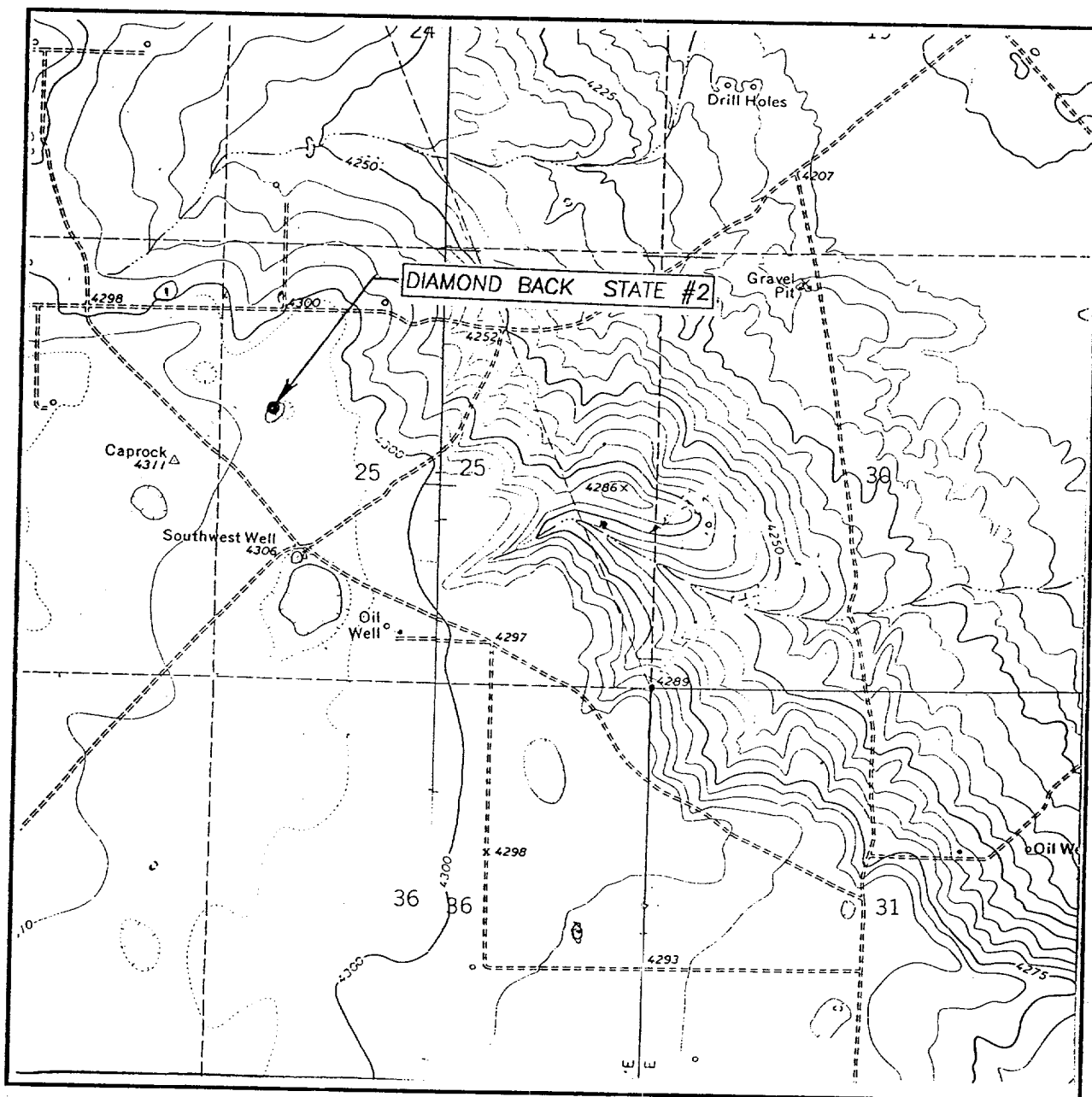


SCALE: 1" = 2 MILES

SEC. 25 TWP. 10-S RGE. 32-E  
 SURVEY N.M.P.M.  
 COUNTY LEA  
 DESCRIPTION 1980'FNL & 660'FWL  
 ELEVATION 4306'  
 OPERATOR CONCHO OIL & GAS INC.  
 LEASE DIAMOND BACK STATE

JOHN WEST SURVEYING  
 HOBBS, NEW MEXICO  
 (505) 393-3117

# LOCATION VERIFICATION MAP



SCALE: 1" = 2000'

CONTOUR INTERVAL: 10' & 5'

SEC. 25 TWP. 10-S RGE. 32-E

LANE SALT LAKE, N.M. 5'

SURVEY N.M.P.M.

CAPROCK, N.M. 10'

COUNTY LEA

DESCRIPTION 1980'FNL & 660'FWL

ELEVATION 4306'

OPERATOR CONCHO OIL & GAS INC.

LEASE DIAMOND BACK STATE

U.S.G.S. TOPOGRAPHIC MAP

LANE SALT LAKE, N.M.

CAPROCK, N.M.

JOHN WEST SURVEYING  
HOBBS, NEW MEXICO  
(505) 393-3117

ABOVE DATE DOES NOT  
INDICATE WHEN  
CONFIDENTIAL LOGS  
WILL BE RELEASED

ELF

5/6/07