

District I
1625 N. French Dr., Hobbs, NM 88240
District II
811 South First, Artesia, NM 88210
District III
1000 Rio Brazos Road, Aztec, NM 87410
District IV
2040 South Pacheco, Santa Fe, NM 87505

State of New Mexico
Energy Minerals and Natural Resources

Form C-101
Revised March 17, 1999

Oil Conservation Division
2040 South Pacheco
Santa Fe, NM 87505

Submit to appropriate District Office
State Lease - 6 Copies
Fee Lease - 5 Copies



AMENDED REPORT

APPLICATION FOR PERMIT TO DRILL, RE-ENTER, DEEPEN, PLUGBACK, OR ADD A ZONE

¹ Operator Name and Address CONCHO OIL & GAS CORP. 110 W. LOUISIAN STE 410 MIDLAND, TX 79701		² OGRID Number 193407
		³ API Number 30 - 025-35509
³ Property Code 27357	⁵ Property Name Shell State	⁶ Well No. 3

⁷ Surface Location

UL or lot no.	Section	Township	Range	Lot Idn	Feet from the	North/South line	Feet from the	East/West line	County
I	26	10S	32E		1840	SOUTH	660	EAST	LEA

⁸ Proposed Bottom Hole Location If Different From Surface

UL or lot no.	Section	Township	Range	Lot Idn	Feet from the	North/South line	Feet from the	East/West line	County
⁹ Proposed Pool 1 CUERNO LARGO PENN					¹⁰ Proposed Pool 2				

¹¹ Work Type Code N	¹² Well Type Code O	¹³ Cable/Rotary R	¹⁴ Lease Type Code S	¹⁵ Ground Level Elevation 4295'
¹⁶ Multiple S	¹⁷ Proposed Depth 10,600	¹⁸ Formation PENN	¹⁹ Contractor JW DRLG	²⁰ Spud Date 4/30/01

²¹ Proposed Casing and Cement Program

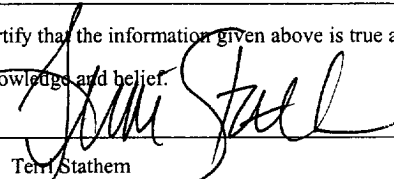

Hole Size	Casing Size	Casing weight/foot	Setting Depth	Sacks of Cement	Estimated TOC
17-1/2	13-3/8	54.5	400	330	SURF
11	8-5/8	32	3750	865	SURF
7-7/8	5-1/2	17	10600	500	7000

22 Describe the proposed program. If this application is to DEEPEN or PLUG BACK, give the data on the present productive zone and proposed new productive zone. Describe the blowout prevention program, if any. Use additional sheets if necessary.

Concho Oil & Gas Corp. respectfully requests approval to amended the location of the Shell State No. 3 well to the following location:

1840 FSL & 660' FEL, Sec 26, T-10S, R-32E

Permit Expires 1 Year From Approval
Date Unless Drilling Underway

²³ I hereby certify that the information given above is true and complete to the best of my knowledge and belief. Signature:  Printed name: Terri Stathem Title: Production Analyst Date: 5-2-01		OIL CONSERVATION DIVISION Approved by: _____ Title: _____ Approval Date: _____ Expiration Date: _____ Conditions of Approval: Attached <input type="checkbox"/>	
Phone: (915) 683-7443			

DISTRICT I
P.O. Box 1980, Hobbs, NM 88241-1980

State of New Mexico

Energy, Minerals and Natural Resources Department

Form C-102
Revised February 10, 1994
Submit to Appropriate District Office
State Lease - 4 Copies
Fee Lease - 3 Copies

DISTRICT II
P.O. Drawer 22, Artesia, NM 88211-0719

OIL CONSERVATION DIVISION

P.O. Box 2088
Santa Fe, New Mexico 87504-2088

DISTRICT III
1000 Rio Brazos Rd., Aztec, NM 87410

DISTRICT IV
P.O. BOX 2088, SANTA FE, N.M. 87504-2088

WELL LOCATION AND ACREAGE DEDICATION PLAT

☒ AMENDED REPORT

API Number 30025-35509	Pool Code 14980	Pool Name Cuerno Largo Penn
Property Code 27357	Property Name SHELL STATE	Well Number 3
OGRID No. 193407	Operator Name CONCHO Oil & Gas Corp.	Elevation 4308'

Surface Location

UL or lot No. 1	Section 26	Township 10-S	Range 32-E	Lot Idn	Feet from the 1840	North/South line SOUTH	Feet from the 660	East/West line EAST	County LEA
--------------------	---------------	------------------	---------------	---------	-----------------------	---------------------------	----------------------	------------------------	---------------

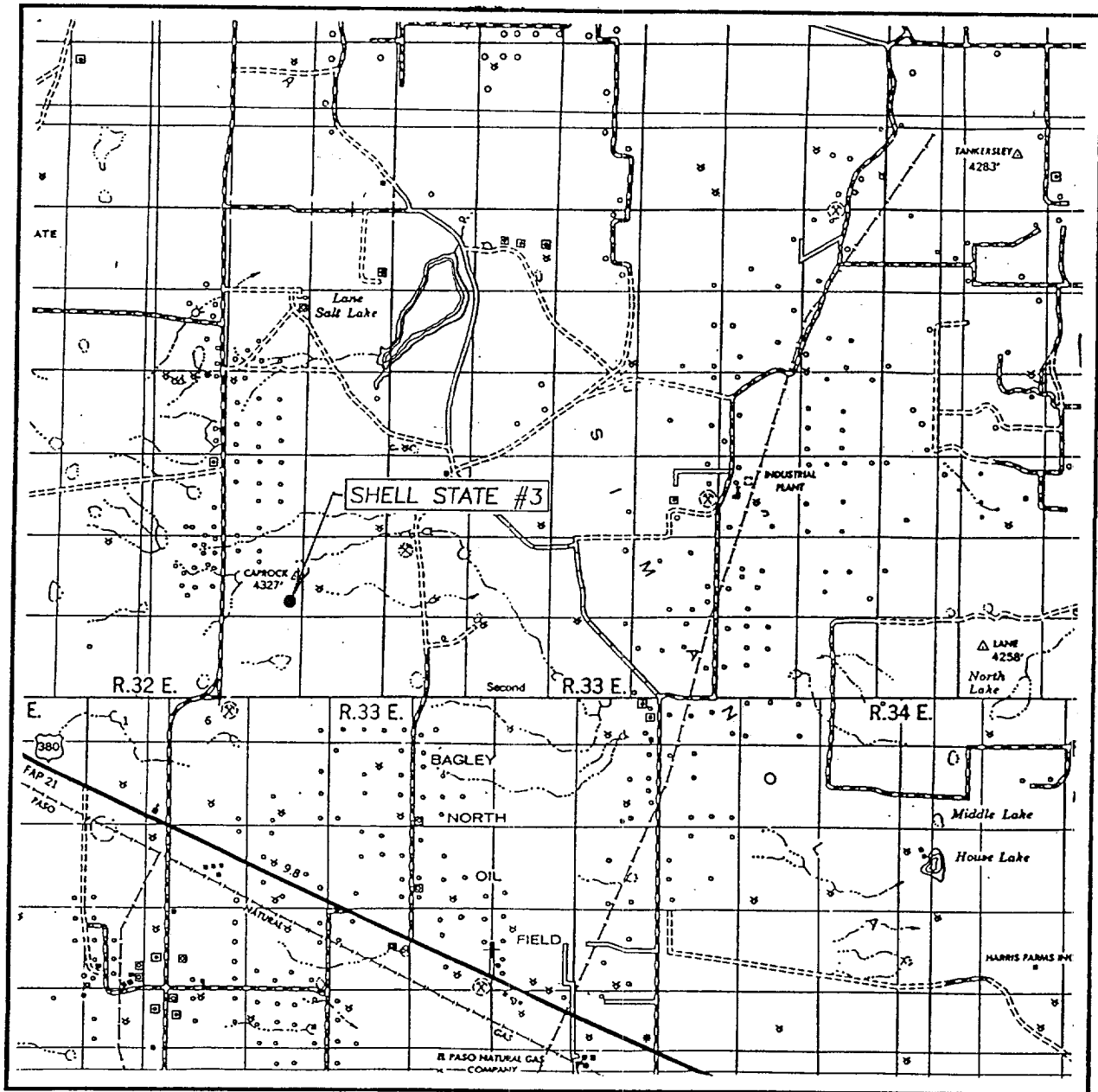
Bottom Hole Location If Different From Surface

UL or lot No.	Section	Township	Range	Lot Idn	Feet from the	North/South line	Feet from the	East/West line	County
Dedicated Acres 40	Joint or Infill	Consolidation Code	Order No.						

NO ALLOWABLE WILL BE ASSIGNED TO THIS COMPLETION UNTIL ALL INTERESTS HAVE BEEN CONSOLIDATED
OR A NON-STANDARD UNIT HAS BEEN APPROVED BY THE DIVISION

	OPERATOR CERTIFICATION <i>I hereby certify the the information contained herein is true and complete to the best of my knowledge and belief.</i> Signature Terri Stathem Printed Name Production Analyst Title 5/2/01 Date
	SURVEYOR CERTIFICATION <i>I hereby certify that the well location shown on this plat was plotted from field notes of actual surveys made by me or under my supervision, and that the same is true and correct to the best of my belief.</i> MARCH 27, 2001 Date Surveyed AWB Signature & Seal of Professional Surveyor 01-11-0363 Certificate No. RONALD J. EDSON 3239 GARY EDSON 12841

VICINITY MAP



SCALE: 1" = 2 MILES

SEC. 26 TWP. 10-S RGE. 32-E

SURVEY N.M.P.M.

COUNTY LEA

DESCRIPTION 1840'FSL & 660'FEL

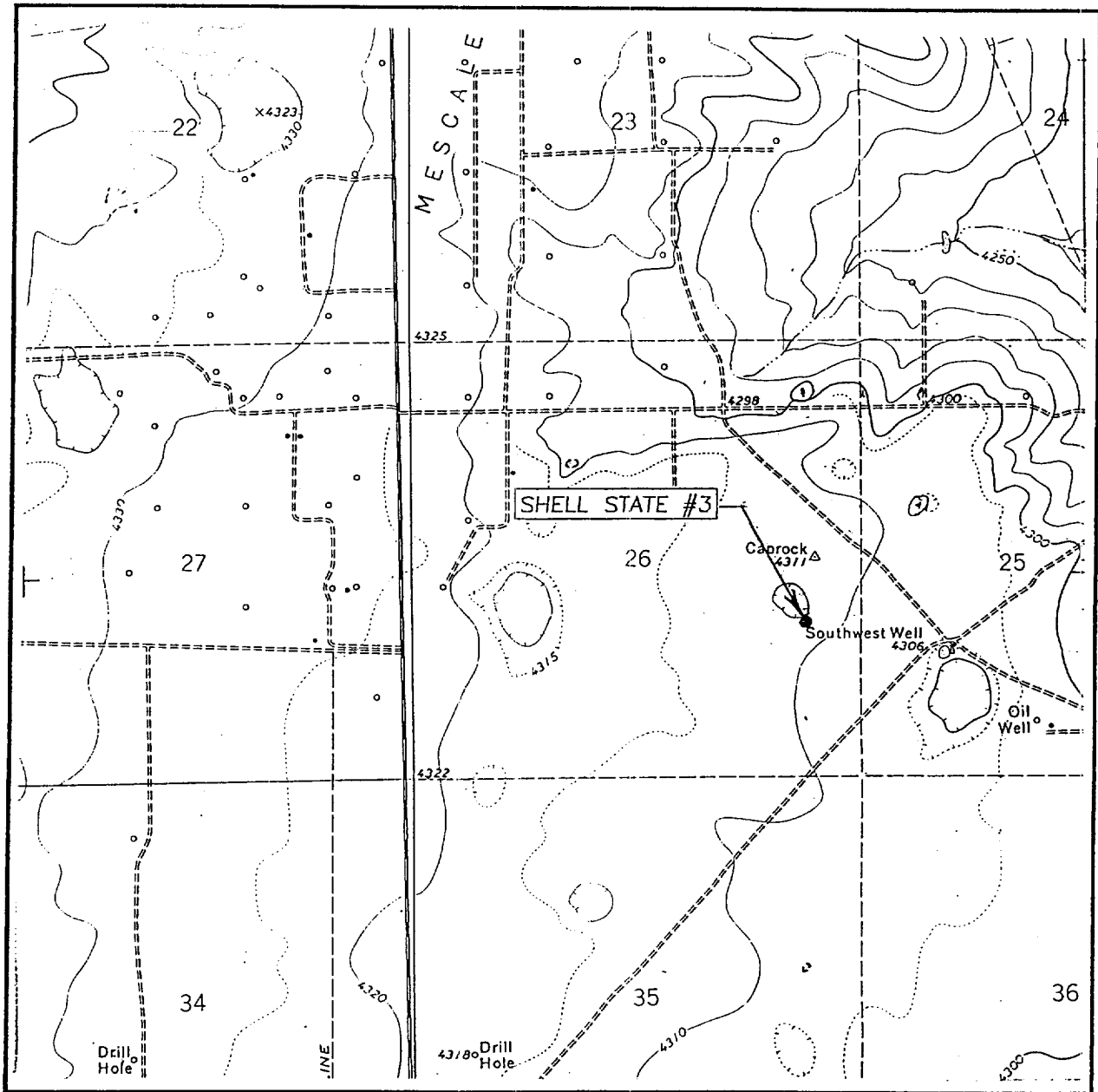
ELEVATION 4308'

OPERATOR CONCHO RESOURCES, INC.

LEASE SHELL STATE

JOHN WEST SURVEYING
HOBBS, NEW MEXICO
(505) 393-3117

LOCATION VERIFICATION MAP



SCALE: 1" = 2000'

CONTOUR INTERVAL: 10'

CAPROCK, N.M.

SEC. 26 TWP. 10-S RGE. 32-E

SURVEY N.M.P.M.

COUNTY LEA

DESCRIPTION 1840' FSL & 660' FEL

ELEVATION 4308'

OPERATOR CONCHO RESOURCES, INC.

LEASE SHELL STATE

U.S.G.S. TOPOGRAPHIC MAP
CAPROCK, N.M.

JOHN WEST SURVEYING
HOBBS, NEW MEXICO
(505) 393-3117