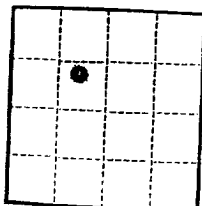


APPROVED

SUBJECT TO SUBMISSION OF AN ADDITIONAL COPY OF NOTICE TO
DEC 8 1960 (SUBMIT IN TRIPLICATE)

Budget Bureau No. 43-2384
Approval expires 12-31-60.



E. W. STANDLEY
DISTRICT ENGINEER
UNITED STATES
DEPARTMENT OF THE INTERIOR
GEOLOGICAL SURVEY

Land Office **Santa Fe**
Lease No. **NM-02218**
Unit

SUNDRY NOTICES AND REPORTS ON WELLS

| | | | |
|--|-------------------------------------|--|--|
| NOTICE OF INTENTION TO DRILL | <input checked="" type="checkbox"/> | SUBSEQUENT REPORT OF WATER SHUT-OFF | |
| NOTICE OF INTENTION TO CHANGE PLANS | | SUBSEQUENT REPORT OF SHOOTING OR ACIDIZING | |
| NOTICE OF INTENTION TO TEST WATER SHUT-OFF | | SUBSEQUENT REPORT OF ALTERING CASING | |
| NOTICE OF INTENTION TO RE-DRILL OR REPAIR WELL | | SUBSEQUENT REPORT OF RE-DRILLING OR REPAIR | |
| NOTICE OF INTENTION TO SHOOT OR ACIDIZE | | SUBSEQUENT REPORT OF ABANDONMENT | |
| NOTICE OF INTENTION TO PULL OR ALTER CASING | | SUPPLEMENTARY WELL HISTORY | |
| NOTICE OF INTENTION TO ABANDON WELL | | | |

(INDICATE ABOVE BY CHECK MARK NATURE OF REPORT, NOTICE, OR OTHER DATA)

December 5, 1960

Well No. **2** is located **1980** ft. from **N** line and **1980** ft. from **W** line of sec. **27**

SE/4NW/4 27
(1/4 Sec. and Sec. No.)

8-S
(Twp.)

37-E
(Range)

NMPM
(Meridian)

Bluit
(Field)

Roosevelt
(County or Subdivision)

New Mexico
(State or Territory)

See Surveyor's certified plat attached.

The elevation of the derrick floor above sea level is **4015** ft.

DETAILS OF WORK

(State names of and expected depths to objective sands; show sizes, weights, and lengths of proposed casings; indicate mudding jobs, cementing points, and all other important proposed work)

The objective formation is the Bough 'C' member of the Pennsylvanian section expected to be encountered at or about the depth of 9,600 ft. from the surface.

The casing program contemplated for this well is as follows:

| Size | Weight & Grade | Depth | Footage |
|--------|----------------|-----------|---------|
| 13-3/8 | 48# H-40 | 0-400 | 400 |
| 8-5/8 | 24# J-55 | 0-2500 | 2500 |
| | 32# J-55 | 2500-4250 | 1750 |
| 5-1/2 | 17# J-55 LT&C | 0-1500 | 1500 |
| | 15.5# J-55 | 1500-7200 | 5700 |
| | 17# J-55 | 7200-9100 | 1900 |
| | 17# N-80 | 9100-9600 | 500 |
| 2-3/8 | 4.7# J-55 | 0-9600 | 9600 |

(See page attached)

I understand that this plan of work must receive approval in writing by the Geological Survey before operations may be commenced.

Company **DAVID FASKEN**

Address **608 First National Bank Building** **DAVID FASKEN**

Midland, Texas

Telephone No. **MU-2-5285**

By **Richard S. Brooks**
Title **Attorney**

The expected mud program will entail use of plain water and native mud to 13-3/8 inch casing point at or about 400 feet, brine water from the surface string casing point at or about 400 feet to the intermediate string casing point at or about 4,250 feet, plain water and native mud from intermediate string casing point at or about 4,250 feet to approximately 8,500 feet and oil base mud with weights and viscosities as needed to maintain satisfactory hole condition from 8,500 feet to total depth.

Surface casing, 13-3/8 inch, will be circulated with cement back to the surface. Intermediate casing, 8-5/8 inch, will be circulated with cement back to the surface string. Oil string casing, 5-1/2 inch, will be cemented with approximately 500 sacks.

It is contemplated that production string casing will be set through and perforated opposite the Bough "C" formation. Prior to running oil string casing it is contemplated that the pay will be drill stem tested and that electric logs will be run.

Signed for Identification:

DAVID FASKEN

By Richard S. Brooks
Richard S. Brooks - Attorney

The expected mud program will entail use of plain water and native mud to 18-2 1/8 inch casing point at or about 400 feet. Plain water from the surface string casing point at or about 400 feet to the intermediate string casing point at or about 4,350 feet, plain water and native mud from intermediate string casing point at or about 4,350 feet to approximately 8,500 feet and oil base mud with weights and additives as needed to maintain satisfactory hole condition from 8,500 feet to total depth.

Surface casing, 18-2 1/8 inch, will be circulated with cement back to the surface. Intermediate casing, 8-5/8 inch, will be circulated with cement back to the surface string. Oil string casing, 8-1/2 inch, will be cemented with approximately 500 sacks.

It is contemplated that production string casing will be set through and perforated opposite the 8-5/8 inch casing. Prior to running oil string casing it is contemplated that the pay will be drill stem tested and that electric logs will be run.

Signed for identification:

DAVID ESKEN

By Richard S. Brooks
Richard S. Brooks - Attorney

NEW MEXICO OIL CONSERVATION COMMISSION
WELL LOCATION AND ACREAGE DEDICATION PLAT

FORM C-128
 Revised 5/1/57

SEE INSTRUCTIONS FOR COMPLETING THIS FORM ON THE REVERSE SIDE

| | | | | | | |
|---------------------------------|----------------------|----------------------------|-------------------------|----------------------------|--|----------------------|
| Operator DAVID FASKEN | | | | Lease 13 PM 141 | | Well No. 2 |
| Unit Letter F | Section 27 | Township 8 South | Range 37 East | County Roosevelt | | |

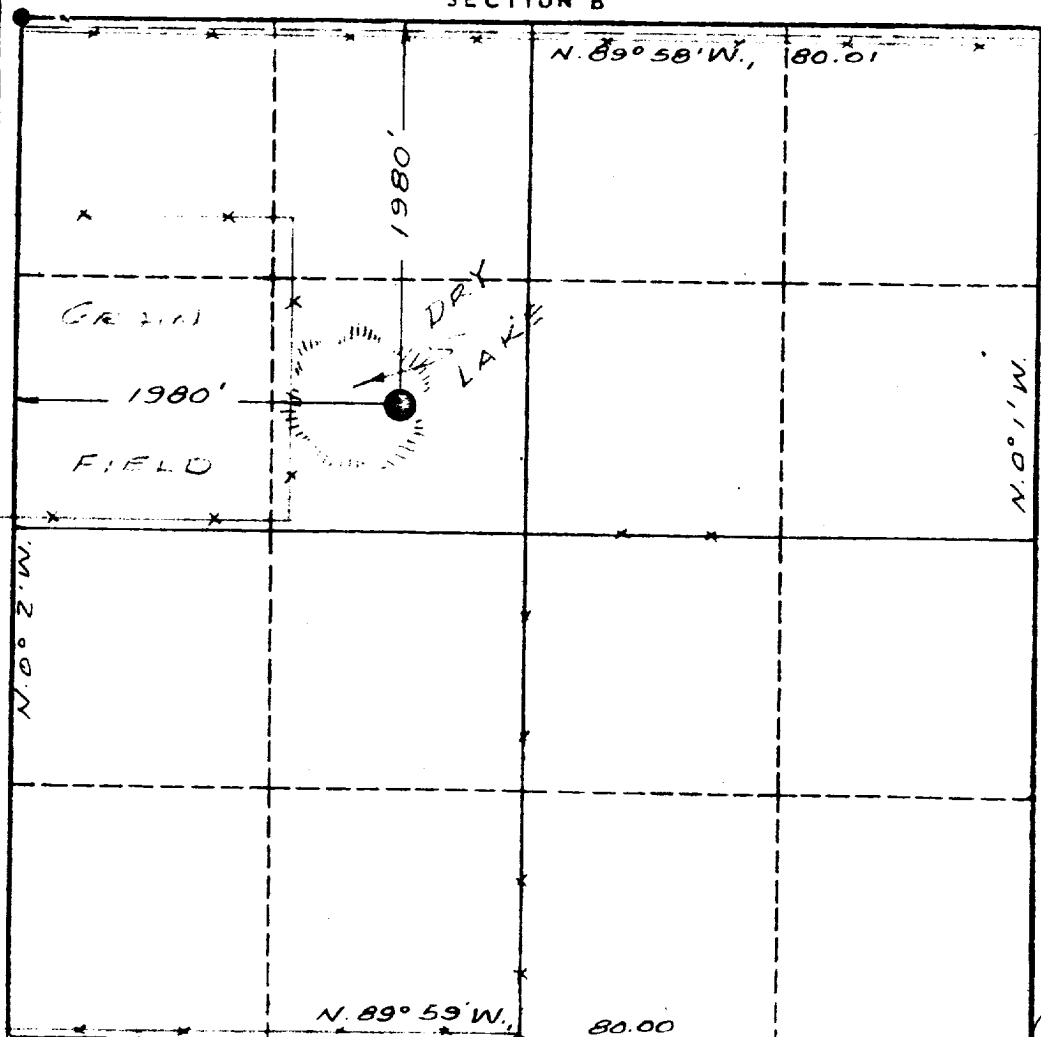
Actual Footage Location of Well:
1980 feet from the **North** line and **1980** feet from the **West** line

| | | | |
|-----------------------------------|---|----------------------------|---------------------------------------|
| Ground Level Elev. 4001 | Producing Formation Bough "C" | Pool Bluit Field | Dedicated Acreage: 80 Acres |
|-----------------------------------|---|----------------------------|---------------------------------------|

1. Is the Operator the only owner in the dedicated acreage outlined on the plat below? YES ☒ NO ☐ ("Owner" means the person who has the right to drill into and to produce from any pool and to appropriate the production either for himself or for himself and another. (65-3-29 (e) NMSA 1935 Comp.)
2. If the answer to question one is "no," have the interests of all the owners been consolidated by communitization agreement or otherwise? YES ☐ NO ☐ If answer is "yes," Type of Consolidation _____
3. If the answer to question two is "no," list all the owners and their respective interests below:

| Owner | Land Description |
|-------|------------------|
| | |
| | |

SECTION B



RECORDED
DEC 8 1960
 U. S. DEPARTMENT OF THE INTERIOR
 BUREAU OF LAND MANAGEMENT
 CERTIFICATION

I hereby certify that the information in SECTION A above is true and complete to the best of my knowledge and belief.

Richard S. Brooks
Richard S. Brooks

Name **Attorney**

Position **David Fasken**

Company **December 5, 1960**

Date

I hereby certify that the well location shown on the plat in SECTION B was plotted from field notes of actual surveys made by me or under my supervision, and that the same is true and correct to the best of my knowledge and belief.

Date Surveyed
October 5 and 6, 1960

Registered Professional Engineer and/or Land Surveyor

Oliver W. Pheasant
 Certificate No. **1559**