

NO. OF COPIES RECEIVED	
DISTRIBUTION	
SANTA FE	
FILE	
U.S.G.S.	
LAND OFFICE	
OPERATOR	

NEW MEXICO OIL CONSERVATION COMMISSION

Form C-101
Revised 1-1-65

5A. Indicate Type of Lease	
STATE <input type="checkbox"/>	FEE <input checked="" type="checkbox"/>
5. State Oil & Gas Lease No.	

APPLICATION FOR PERMIT TO DRILL, DEEPEN, OR PLUG BACK

1a. Type of Work		7. Unit Agreement Name	
b. Type of Well DRILL <input type="checkbox"/> Re-enter <input type="checkbox"/> DEEPEN <input type="checkbox"/> PLUG BACK <input type="checkbox"/> OIL WELL <input checked="" type="checkbox"/> GAS WELL <input type="checkbox"/> OTHER <input type="checkbox"/> SINGLE ZONE <input type="checkbox"/> MULTIPLE ZONE <input type="checkbox"/>		8. Farm or Lease Name J. R. Matthews	
2. Name of Operator Vaughn Petroleum, Inc.		9. Well No. 2	
3. Address of Operator 1407 Main, Dallas, Texas 75202		10. Field and Pool, or Wildcat Unnamed	
4. Location of Well UNIT LETTER <u>1</u> LOCATED <u>660</u> FEET FROM THE <u>north</u> LINE AND <u>1980</u> FEET FROM THE <u>east</u> LINE OF SEC. <u>19</u> TWP. <u>8S</u> RGE. <u>37E</u> NMPM		12. County Roosevelt	
19. Proposed Depth 4900'		19A. Formation San Andres	
20. Rotary or C.T. Rotary		21. Elevations (Show whether DF, RT, etc.) 4058 DF	
21A. Kind & Status Plug. Bond \$10,000 Blanket-Will submit		21B. Drilling Contractor Will advise	
22. Approx. Date Work will start 7/7/71			

PROPOSED CASING AND CEMENT PROGRAM

SIZE OF HOLE	SIZE OF CASING	WEIGHT PER FOOT	SETTING DEPTH	SACKS OF CEMENT	EST. TOP
	8-5/8"		4118'		
7-3/4"	5-1/2"		9620'		

Well originally drilled as Shell #2 J. R. Matthews to Bough "C" sand. P&A w/5½" casing shot off @ 4610'. Vaughn proposes to drill out cement plugs; run 5½" casing to 4610'; patch on to 5½" casing fish at 4610'; perforate and recement 5½" casing from 4925'; perforate and attempt completion in San Andres 4878-82'; acidize if required.

IN ABOVE SPACE DESCRIBE PROPOSED PROGRAM: IF PROPOSAL IS TO DEEPEN OR PLUG BACK, GIVE DATA ON PRESENT PRODUCTIVE ZONE AND PROPOSED NEW PRODUCTIVE ZONE. GIVE SLOWDOWN PREVENTER PROGRAM, IF ANY.

I hereby certify that the information above is true and complete to the best of my knowledge and belief.

Signed Earle S. Lougee, Title General Superintendent Date July 2, 1971

(This space for State Use)

SUPERVISOR DISTRICT I

JUL 12 1971

APPROVED BY [Signature] TITLE DATE

CONDITIONS OF APPROVAL, IF ANY:

RECEIVED

JUL 16 1971
OIL CONSERVATION COMM.
HOBBS, N. M.

NEW MEXICO OIL CONSERVATION COMMISSION
WELL LOCATION AND ACREAGE DEDICATION FORM

Form C-102
 Supersedes C-128
 Effective 1-1-65

All distances must be from the outer boundaries of the Section.

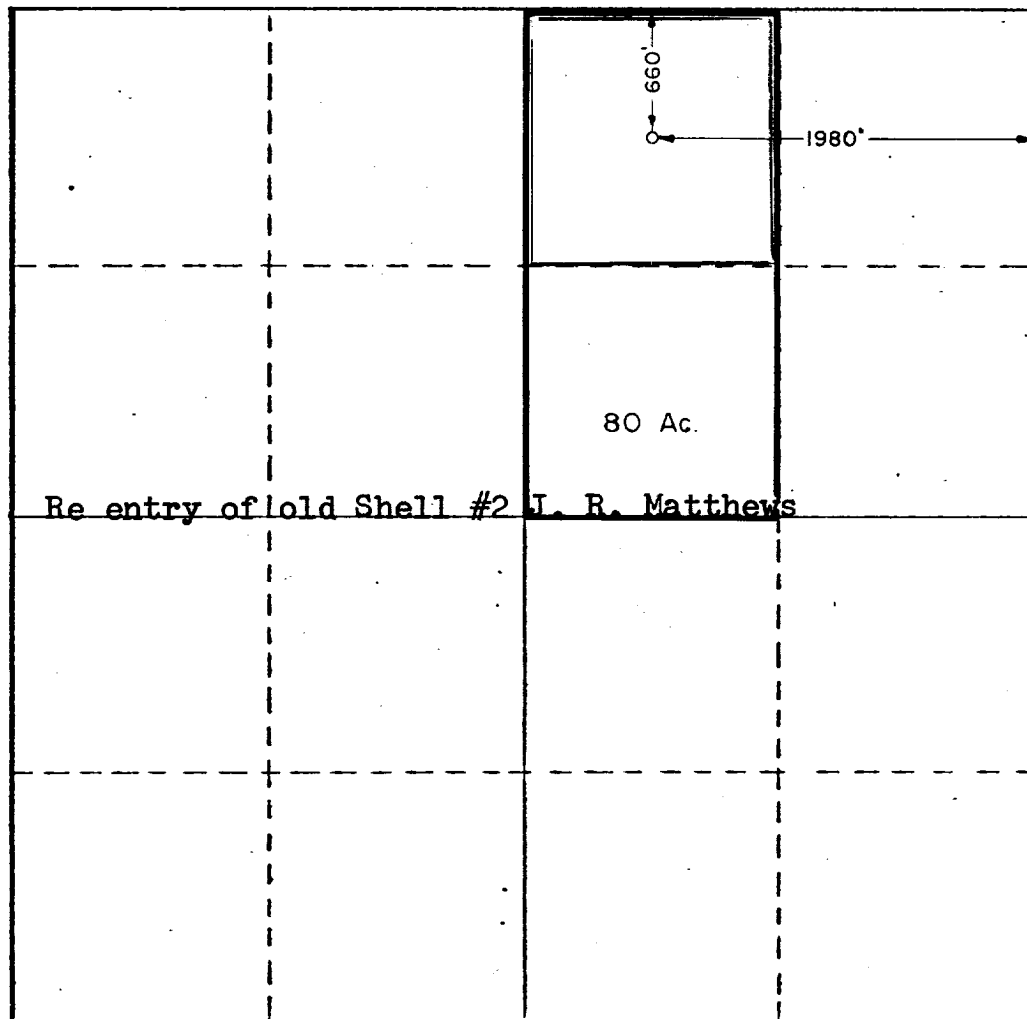
Operator Vaughn Petroleum, Inc.			Lease J. R. Matthews		Well No. 2
Unit Letter 8	Section 19	Township 8 South	Range 37 East	County Roosevelt	
Actual Footage Location of Well: 660 feet from the North line and 1980 feet from the East line					
Ground Level Elev. 4047	Producing Formation San Andres	Pool Unnamed		Dedicated Acreage: 80 Acres	

1. Outline the acreage dedicated to the subject well by colored pencil or hachure marks on the plat below.
2. If more than one lease is dedicated to the well, outline each and identify the ownership thereof (both as to working interest and royalty).
3. If more than one lease of different ownership is dedicated to the well, have the interests of all owners been consolidated by communitization, unitization, force-pooling, etc?

☐ Yes ☐ No If answer is "yes," type of consolidation _____

If answer is "no," list the owners and tract descriptions which have actually been consolidated. (Use reverse side of this form if necessary.) _____

No allowable will be assigned to the well until all interests have been consolidated (by communitization, unitization, forced-pooling, or otherwise) or until a non-standard unit, eliminating such interests, has been approved by the Commission.



CERTIFICATION

I hereby certify that the information contained herein is true and complete to the best of my knowledge and belief.

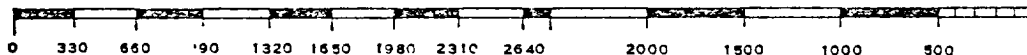
Name *Earle S. Lougee*
 Position **General Supt.**
 Company **Vaughn Petroleum, Inc.**
 Date **July 2, 1971**

I hereby certify that the well location shown on this plat was plotted from field notes of actual surveys made by me or under my supervision, and that the same is true and correct to the best of my knowledge and belief.

Date Surveyed _____

Registered Professional Engineer and/or Land Surveyor

Certificate No. _____



RECEIVED

JUL - 6 1971

**OIL CONSERVATION COMM.
HOBBS, N. M.**

NUMBER OF COPIES RECEIVED	
DISTRIBUTION	
SANTA FE	
FILE	
U.S.G.S.	
LAND OFFICE	
TRANSPORTER	OIL
	GAS
PRODUCTION OFFICE	
OPERATOR	

NEW MEXICO OIL CONSERVATION COMMISSION

FORM C-103
(Rev 3-55)

MISCELLANEOUS REPORTS ON WELLS

(Submit to appropriate District Office as per Commission Rule 1106)

Name of Company Shell Oil Company		Address Box 1858 Roswell, New Mexico	
Lease Matthews	Well No. 2	Unit Letter B	Section 19
Date Work Performed January 9, 1963		Pool Allison-Pennsylvanian	County Roosevelt
Township 8-S		Range 37-E	

THIS IS A REPORT OF: (Check appropriate block)

- ☐ Beginning Drilling Operations
 ☐ Casing Test and Cement Job
 ☐ Other (Explain):
- ☒ Plugging
 ☐ Remedial Work

Detailed account of work done, nature and quantity of materials used, and results obtained.

Cut 5½" casing @ 4610' and pulled.
 Spotted cement plugs as follows:
 100 axs incoor neat - 7911' - 6900'
 50 axs incoor neat - 4610'
 25 axs incoor neat - 4118'
 25 axs incoor neat - at surface
 Erected prescribed 4"x4' marker
 Well P&A January 9, 1963.

Verbal approval obtained via telephone conversation December 28, 1962, between Joe Ramey of N.M.O.C.C. and R. D. Vassar of Shell Oil Company.

Witnessed by H. G. Starling		Position Production Foreman		Company Shell Oil Company		
FILL IN BELOW FOR REMEDIAL WORK REPORTS ONLY						
ORIGINAL WELL DATA						
D F Elev.	T D	P B T D	Producing Interval	Completion Date		
Tubing Diameter	Tubing Depth	Oil String Diameter	Oil String Depth			
Perforated Interval(s)						
Open Hole Interval			Producing Formation(s)			
RESULTS OF WORKOVER						
Test	Date of Test	Oil Production BPD	Gas Production MCFPD	Water Production BPD	GOR Cubic feet/Bbl	Gas Well Potential MCFPD
Before Workover						
After Workover						
OIL CONSERVATION COMMISSION				I hereby certify that the information given above is true and complete to the best of my knowledge.		
Approved by <i>Leslie A. Clement</i>		Name W. E. Bingman		Original Signed By W. E. Bingman		
Title		Position Division Mechanical Engineer				
Date		Company Shell Oil Company				

NUMBER OF COPIES RECEIVED	
DISTRIBUTION	
SANTA FE	
FILE	
U.S.G.S.	
LAND OFFICE	
TRANSPORTER	OIL GAS
PRORATOR OFFICE	
OPERATOR	

NEW MEXICO OIL CONSERVATION COMMISSION

FORM C-103
(Rev 3-55)

MISCELLANEOUS REPORTS ON WELLS

(Submit to appropriate District Office as per Commission Rule 1106)

1962 JAN 10 PM 2:45

Name of Company Shell Oil Company				Address P. O. Box 1858, Roswell, New Mexico			
Lease Matthews	Well No. 2	Unit Letter B	Section 19	Township 8S	Range 37E		
Date Work Performed 10-23-62 thru 1-9-63	Pool Allison-Pennsylvanian			County Roosevelt			

THIS IS A REPORT OF: (Check appropriate block)

- ☐ Beginning Drilling Operations
 ☐ Casing Test and Cement Job
 ☒ Other (Explain):
- ☐ Plugging
 ☐ Remedial Work

Detailed account of work done, nature and quantity of materials used, and results obtained.

- Set Baker Model K CIBP on wireline at 7750'.
- Ran GR/CCL Survey 7700' - 4118'.
- Perforated at 7060' w/4 jet shots. Set Model K cement retainer at 7045'.
- Ran tubing and set in retainer. Attempted to inject through perforations at 5200 psi. Could not break down.
- Pulled tubing, perforated 7040' - 7041' w/4 jet shots.
- Ran Baker Model K cement retainer on wireline, set at 7028'. Ran 2 1/2" tubing w/Baker stinger, set in Model K retainer.
- Pumped 100 bbls. fresh water ahead of cement. Pumped 200 ax. regular neat cement thru perforations. Maintained circulation throughout at maximum/minimum pressure 2700/1800 psi. Displaced cement w/salt water, pulled out of retainer, reversed out 8 ax. cement and pulled tubing.
- Perforated 5 1/2" casing 6930' - 6931' w/4 jet shots.
- Ran Baker FBEC on 2 1/2" tubing to 6840', squeezed w/200 ax. neat cement.
- Drilled out to 7028'. Circulated hole clean.
- Spotted 300 gallons 15% MCA.

(Continued on back of page)

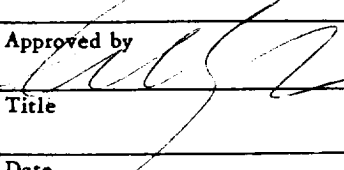
Witnessed by H. G. Starling	Position Production Foreman	Company Shell Oil Company
---------------------------------------	---------------------------------------	-------------------------------------

FILL IN BELOW FOR REMEDIAL WORK REPORTS ONLY

ORIGINAL WELL DATA				
D F Elev.	T D	P BTD	Producing Interval	Completion Date
Tubing Diameter	Tubing Depth	Oil String Diameter	Oil String Depth	
Perforated Interval(s)				
Open Hole Interval			Producing Formation(s)	

RESULTS OF WORKOVER

Test	Date of Test	Oil Production BPD	Gas Production MCFPD	Water Production BPD	GOR Cubic feet/Bbl	Gas Well Potential MCFPD
Before Workover						
After Workover						

OIL CONSERVATION COMMISSION		I hereby certify that the information given above is true and complete to the best of my knowledge.	
Approved by 	Name R. A. Lowery	Original Signed By R. A. LOWERY	
Title	Position District Exploitation Engineer		
Date	Company Shell Oil Company		

12. Perforated 5 1/2" casing 6969' - 6971', 6980 1/2' - 6982 1/2', & 6991' - 6993' w/3 JRP.
13. Ran 2 1/2" tubing w/Baker PNC set at 6959' w/4' perforations. BP at 6970'.
14. Treated perforations 6969' - 6993' w/300 gallons 1% MCA.
15. Swabbed dry.
16. Pulled tubing and PNC, reran tubing open ended, PNC at 6942'.
17. Spotted 1% MCA, attempted to treat, communication w/squeeze perforations at 6930'.
18. Pulled tubing and PNC, reran tubing & PNC, set PNC at 6810'.
19. Squeezed w/475 ex. neat cement in 5 stages.
20. Ran 4 3/4" bit on 2 1/2" tubing, tagged cement at 6680'. Drilled to top of Model K cement retainer at 7028'. Circulated hole clean. Tested squeezed to 3800 psi/30 minutes/OK. Pulled tubing and bit.
21. Perforated 5 1/2" casing 6968' - 6972', 6979 1/2' - 6983 1/2', 6990' - 6994' w/2 JRP.
22. Ran 3" frac tubing and Baker PNC, set PNC at 6956'.
23. Treated w/400 gallons 1% MCA.
24. Treated w/20,000 gallons lease oil containing 1# 20-40 mesh sand and 1/50# Mark II Adomite/gallon.
25. Pulled 3" tubing and PNC.
26. Cleaned out sand to 7028'.
27. Ran 2 1/2" tubing open ended w/Sweet HW packer set at 6938'.
28. Swabbed dry.
29. Pulled tubing and packer.
30. Reran PNC on 2 1/2" tubing to 6910'.
31. Squeezed w/50 ex. cement.
32. Pulled tubing and PNC.
33. Ran 4 3/4" bit on 2 1/2" tubing and drilled out to 7028'.
34. Tested squeeze w/1000 psi. OK.
35. Drilled cement retainer at 7028' & cement to top of 2nd retainer at 7045'. Drilled 2nd retainer and cleaned to top of bridge plug at 7750'. Drilled bridge plug and cleaned out to 7911'.
36. Well plugged and abandoned.

NUMBER: COPIES RECEIVED	
DISTRIBUTION	
SANTA FE	
FILE	
U.S.G.S.	
LAND OFFICE	
TRANSPORTER	OIL GAS
PRODUCTION OFFICE	
OPERATOR	

(Form C-102)
(Revised 7/1/52)

NEW MEXICO OIL CONSERVATION COMMISSION

Santa Fe, New Mexico

HOBBS OFFICE 000

MISCELLANEOUS NOTICES

1962 NOV 14 AM 10:20

returned to the person on which will be given the approval, with any modifications considered advisable, or the rejection by the Commission or agent, of the plan submitted. The plan as approved should be followed, and work should not begin until approval is obtained. See additional instructions in the Rules and Regulations of the Commission.

Indicate Nature of Notice by Checking Below

NOTICE OF INTENTION TO CHANGE PLANS		NOTICE OF INTENTION TO TEMPORARILY ABANDON WELL		NOTICE OF INTENTION TO DRILL DEEPER	
NOTICE OF INTENTION TO PLUG WELL		NOTICE OF INTENTION TO PLUG BACK		NOTICE OF INTENTION TO SET LINER	
NOTICE OF INTENTION TO SQUEEZE	X	NOTICE OF INTENTION TO ACIDIZE	X	NOTICE OF INTENTION TO SHOOT (Niro)	
NOTICE OF INTENTION TO GUN PERFORATE	X	NOTICE OF INTENTION (OTHER)		NOTICE OF INTENTION (OTHER)	

OIL CONSERVATION COMMISSION
SANTA FE, NEW MEXICO

Roswell, New Mexico

November 7, 1962

(Place)

(Date)

Gentlemen:

Following is a Notice of Intention to do certain work as described below at the

Shell Oil Company Matthews Well No. 2 in B
(Company or Operator) Lease 37E (Unit)
NW NE 19 8S Allison-Pennsylvanian Pool
(40-acre Subdivision) 1/4 of Sec. T. R. NMPM.
Roosevelt County.

FULL DETAILS OF PROPOSED PLAN OF WORK (FOLLOW INSTRUCTIONS IN THE RULES AND REGULATIONS)

1. Pull tubing.
2. Run GR/CCL log 7700' - 4118'.
3. Set CIBP at 7100'.
4. Perforate 5 1/2" casing at 7060' w/4 JS, squeeze.
5. Perforate 5 1/2" casing at 6930' w/4 JS and squeeze.
6. Run bit, drill out cement to 7050', or top of retainer, and test upper squeeze perforations w/3000 psi for 30 minutes.
7. Perforate 6969' - 6971', 6980.5' - 6982.5', and 6991' - 6993' w/3 JSFF.
8. Run 2 1/2" tubing w/packer, treat perforations 6969 - 6993' w/300 gallons 15% MCA.
9. Swab load and production test.

Approved....., 19.....
Except as follows:

Approved
OIL CONSERVATION COMMISSION

By *John W. Ryan*

Title.....

Shell Oil Company

Company or Operator

By *R. A. Lowery* Original Signed By *R. A. LOWERY*

Position *District Exploitation Engineer*

Send Communications regarding well to:

Name *Shell Oil Company*

Address *P. O. Box 1858, Roswell, New Mexico*

NUMBER OF COPIES RECEIVED	
DISTRIBUTION	
SANTA FE	
FILE	
U.S.G.O.	
LAND OFFICE	
TRANSPORTER	OIL
	GAS
PRODUCTION OFFICE	
OPERATOR	

NEW MEXICO OIL CONSERVATION COMMISSION SANTA FE, NEW MEXICO CERTIFICATE OF COMPLIANCE AND AUTHORIZATION TO TRANSPORT OIL AND NATURAL GAS	FORM C-110 (Rev. 7-60) RECEIVED FILE OCC
--------------------------------------------------------------------------------------------------------------------------------------------------------------------	-------------------------------------------------------

FILE THE ORIGINAL AND 4 COPIES WITH THE APPROPRIATE OFFICE

Company or Operator Shell Oil Company				Lease Matthews	Well No. 2
Unit Letter B	Section 19	Township 8S	Range 37E	County Roosevelt	

Pool Allison-Pennsylvanian	Kind of Lease (State, Fed Fee) Patented
--------------------------------------	---------------------------------------------------

If well produces oil or condensate give location of tanks	Unit Letter H	Section 19	Township 8S	Range 37E
--------------------------------------------------------------	-------------------------	----------------------	-----------------------	---------------------

Authorized transporter of oil <input checked="" type="checkbox"/> or condensate <input type="checkbox"/> McWood Corporation	Address (give address to which approved copy of this form is to be sent) 701 V & J Tower Building, Midland, Texas
---------------------------------------------------------------------------------------------------------------------------------------	---------------------------------------------------------------------------------------------------------------------------------

Is Gas Actually Connected? Yes ☒ No ☐

Authorized transporter of casing head gas <input checked="" type="checkbox"/> or dry gas <input type="checkbox"/> Sinclair Oil & Gas Company	Date Connected 9-20-60	Address (give address to which approved copy of this form is to be sent) P. O. Box 1470, Midland, Texas
------------------------------------------------------------------------------------------------------------------------------------------------------------	----------------------------------	-------------------------------------------------------------------------------------------------------------------

If gas is not being sold, give reasons and also explain its present disposition:

REASON(S) FOR FILING (please check proper box)	
New Well <input type="checkbox"/> Change in Transporter (check one) Oil <input type="checkbox"/> Dry Gas <input type="checkbox"/> Casing head gas . <input type="checkbox"/> Condensate.. <input type="checkbox"/>	Change in Ownership <input type="checkbox"/> Other (explain below)

Remarks
Change in Pool Designation from Eluitt-Pennsylvanian to Allison-Pennsylvanian as per NMOCC Order No. R-1981.

The undersigned certifies that the Rules and Regulations of the Oil Conservation Commission have been complied with.
Executed this the 19th day of June, 19 61.

OIL CONSERVATION COMMISSION		By S. B. Deal <i>S.B. Deal</i>
Approved by <i>Lester A. Clements</i>		Title Division Production Superintendent
Title <i>Lester A. Clements</i>		Company Shell Oil Company
Date <i>June 19 1961</i>		Address Box 1858, Roswell, New Mexico

NEW MEXICO OIL CONSERVATION COMMISSION
SANTA FE, NEW MEXICO

Form G-110
Revised 7/1/55

(File the original and 4 copies with the appropriate district office)

CERTIFICATE OF COMPLIANCE AND AUTHORIZATION
TO TRANSPORT OIL AND NATURAL GAS

AM 10 05

Company or Operator Shell Oil Company Lease Matthews
Well No. 2 Unit Letter B S 19 T 88 R 37E Pool Bluitt-Pennsylvanian
County Roosevelt Kind of Lease (State, Fed. or Patented) Patented
If well produces oil or condensate, give location of tanks: Unit B S 19 T 88 R 37E
Authorized Transporter of Oil or Condensate McWood Corporation
Address 701 V & J Tower Building, Midland, Texas
(Give address to which approved copy of this form is to be sent)
Authorized Transporter of Gas Sinclair Oil & Gas Company
Address P. O. Box 1470, Midland, Texas Date Connected 9-20-60
(Give address to which approved copy of this form is to be sent)
If Gas is not being sold, give reasons and also explain its present disposition:

Reasons for Filing: (Please check proper box) New Well ☐
Change in Transporter of (Check One): Oil ☐ Dry Gas ☐ C'head ☒ Condensate ☐
Change in Ownership ☐ Other ☐
Remarks: (Give explanation below)

This report covers casinghead gas production on the above lease in
accordance with Commission Order R-98-A, Paragraph 9, Rule 1109,

Section (A).

The undersigned certifies that the Rules and Regulations of the Oil Conservation Commission have been complied with.

Executed this the 22nd day of September 19 60

Original Signed By
By R. A. Lowery R. A. LOWERY

Title District Exploitation Engineer

Company Shell Oil Company

Address P. O. Box 845

Roswell, New Mexico

Approved 22 1960 19 60

OIL CONSERVATION COMMISSION

By [Signature]
Title Engineer District 4