

NUMBER OF COPIES RECEIVED	
DISTRIBUTION	
SANTA FE	
FILE	
U.S.G.S.	
LAND OFFICE	
TRANSPORTER	OIL GAS
PROBATION OFFICE	
OPERATOR	

# NEW MEXICO OIL CONSERVATION COMMISSION

Santa Fe, New Mexico

HOBBS OFFICE O. C. C.

Form C-101  
Revised 12/1/55

## NOTICE OF INTENTION TO DRILL

Nov 4 8 33 AM '63

Notice must be given to the District Office of the Oil Conservation Commission and approval obtained before drilling or recompletion begins. If changes in the proposed plan are considered advisable, a copy of this notice showing such changes will be returned to the sender. Submit this notice in QUINTUPLICATE. One copy will be returned following approval. See additional instructions in Rules and Regulations of the Commission. If State Land submit 6 Copies. Attach Form C-128 in triplicate to first 3 copies of Form C-101.

Hobbs, New Mexico

November 1, 1963

(Place)

(Date)

OIL CONSERVATION COMMISSION  
SANTA FE, NEW MEXICO

Gentlemen:

You are hereby notified that it is our intention to commence the Drilling of a well to be known as

**Cities Service Oil Company**

(Company or Operator)

**Pate "A"**

, Well No. **1**, in **B** (Unit) The well is

located **660** feet from the **North** line and **1980** feet from the **East** line of Section **7**, T **8S**, R **35E**, NMPM.

(GIVE LOCATION FROM SECTION LINE) **Milnesand** Pool, **Roosevelt** County

D	C	B	A
E	F	G	H
L	K	J	I
M	N	O	P

If State Land the Oil and Gas Lease is No. **-**

If patented land the owner is **Cecil Pate**

Address **Milnesand, New Mexico**

We propose to drill well with drilling equipment as follows: **Rotary**

The status of plugging bond is **approved**

Drilling Contractor **Cactus Drilling Co.**

We intend to complete this well in the **San Andres** formation at an approximate depth of **5100** feet.

### CASING PROGRAM

We propose to use the following strings of Casing and to cement them as indicated:

Size of Hole	Size of Casing	Weight per Foot	New or Second Hand	Depth	Sacks Cement
<b>11 1/2"</b>	<b>8 5/8"</b>	<b>24#</b>	<b>New</b>	<b>375'</b>	<b>circulated</b>
<b>6 5/8"</b>	<b>4 1/2"</b>	<b>9.5#</b>	<b>New</b>	<b>TD 5100</b>	<b>300</b>

If changes in the above plans become advisable we will notify you immediately.

ADDITIONAL INFORMATION (If recompletion give full details of proposed plan of work.)

Approved \_\_\_\_\_, 19\_\_\_\_  
Except as follows:

Sincerely yours,

**Cities Service Oil Company**

(Company or Operator)

By Clifford A. Robertson

Position **District Clerk**

Send Communications regarding well to

Name ~~Clifford A. Robertson~~ **G. M. Geyer**

Address **Box 69 - Hobbs, New Mexico**

OIL CONSERVATION COMMISSION

**NEW MEXICO OIL CONSERVATION COMMISSION**  
**WELL LOCATION AND ACREAGE DEDICATION PLAT**

FORM C-128  
 Revised 2/1/57

HOBBS OFFICE O. C. C.

SEE INSTRUCTIONS FOR COMPLETING THIS FORM ON THE REVERSE SIDE 33 AM '63

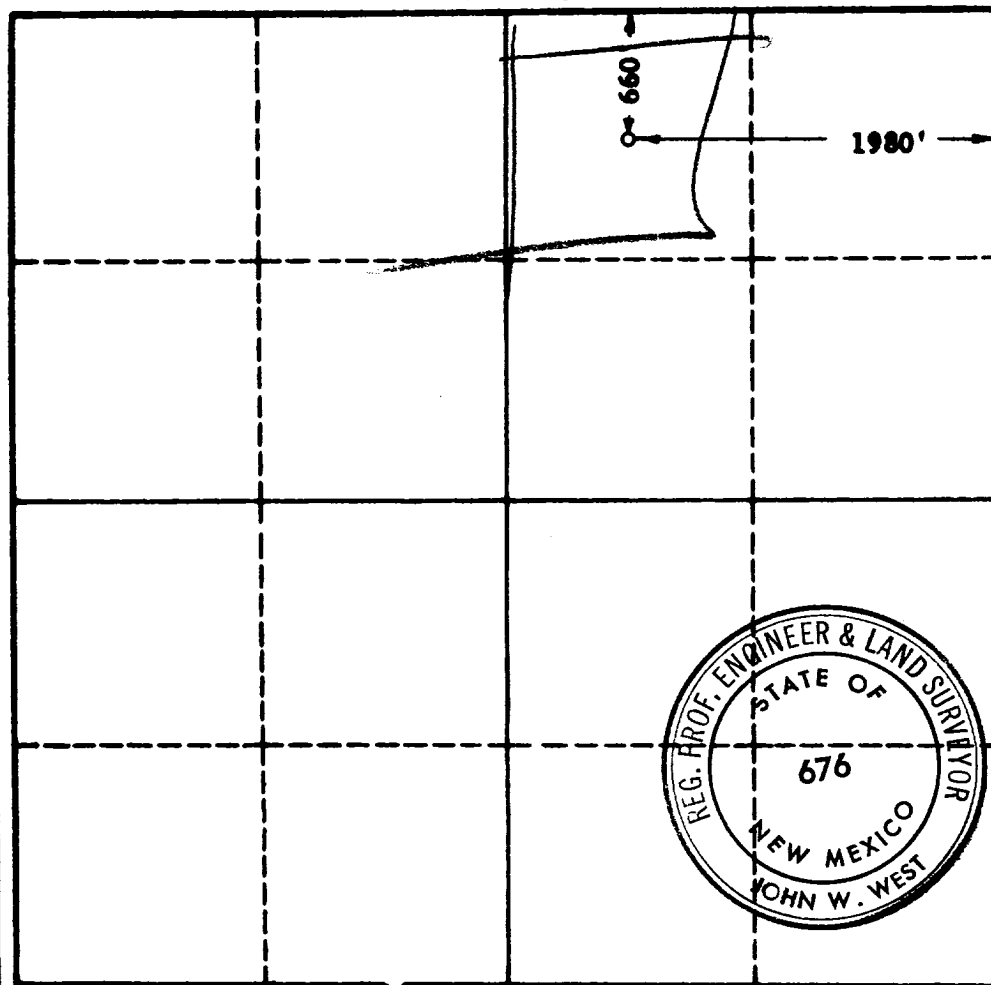
**SECTION A**

Operator <b>CITIES SERVICE OIL COMPANY</b>			Lease <b>PATE "A"</b>		Well No. <b>1</b>
Unit Letter <b>B</b>	Section <b>7</b>	Township <b>8 SOUTH</b>	Range <b>35 EAST</b>	County <b>ROOSEVELT</b>	
Actual Footage Location of Well: <b>660</b> feet from the <b>NORTH</b> line and <b>1980</b> feet from the <b>EAST</b> line					
Ground Level Elev.	Producing Formation <b>San Andres</b>		Pool <b>Milnesand</b>		Dedicated Acreage: <b>40</b> Acres

1. Is the Operator the only owner in the dedicated acreage outlined on the plat below? YES X NO \_\_\_\_ . ("Owner" means the person who has the right to drill into and to produce from any pool and to appropriate the production either for himself or for himself and another. (65-3-29 (a) NMSA 1935 Comp.)
2. If the answer to question one is "no," have the interests of all the owners been consolidated by communitization agreement or otherwise? YES \_\_\_\_ NO \_\_\_\_ . If answer is "yes," Type of Consolidation \_\_\_\_\_
3. If the answer to question two is "no," list all the owners and their respective interests below:

Owner	Land Description

**SECTION B**



0 330 660 990 1320 1650 1980 2310 2640 2000 1650 1320 990 660 330 0

**CERTIFICATION**

I hereby certify that the information in SECTION A above is true and complete to the best of my knowledge and belief.

Name <i>Clifford M. Robinson</i>
Position <b>District Clerk</b>
Company <b>Cities Service Oil</b>
Date <b>November 1, 1963</b>

I hereby certify that the well location shown on the plat in SECTION B was plotted from field notes of actual surveys made by me or under my supervision, and that the same is true and correct to the best of my knowledge and belief.

Date Surveyed <b>OCTOBER 30, 1963</b>
Registered Professional Engineer and/or Land Surveyor, <b>JOHN W. WEST</b>
<i>John W. West</i>
Certificate No. <b>N. M. - P. E. &amp; L. S. NO. 676</b>