

N. M. OIL CONS. COMMISSION  
P. O. BOX 1880  
HOBBS, NEW MEXICO 88240

UNITED STATES  
DEPARTMENT OF THE INTERIOR  
BUREAU OF LAND MANAGEMENT

Form approved.  
Budget Bureau No. 1004-0136  
Expires August 31, 1985

5. LEASE DESIGNATION AND SERIAL NO.  
77112 NM 77112

6. IF INDIAN, ALLOTTEE OR TRIBE NAME

7. UNIT AGREEMENT NAME

8. FARM OR LEASE NAME  
Norman Bates

9. WELL NO.  
1

10. FIELD AND POOL, OR WILDCAT  
Wildcat (Abo) South Prairie

11. SEC., T., R., M., OR BLK. AND SURVEY OR AREA  
Section 21, T-8-S, R-36-E

12. COUNTY OR PARISH  
Roosevelt

13. STATE  
NM

14. DISTANCE IN MILES AND DIRECTION FROM NEAREST TOWN OR POST OFFICE\*  
7 miles north and 5 miles east of Crossroads, NM

15. DISTANCE FROM PROPOSED\* LOCATION TO NEAREST PROPERTY OR LEASE LINE, FT. (Also to nearest drlg. unit line, if any)  
330'

16. NO. OF ACRES IN LEASE  
280

17. NO. OF ACRES ASSIGNED TO THIS WELL  
80 40

18. DISTANCE FROM PROPOSED LOCATION\* TO NEAREST WELL, DRILLING, COMPLETED, OR APPLIED FOR, ON THIS LEASE, FT.  
None

19. PROPOSED DEPTH  
9200'

20. ROTARY OR CABLE TOOLS  
Rotary

21. ELEVATIONS (Show whether DF, RT, GR, etc.)  
4104' GR 4116' KB

22. APPROX. DATE WORK WILL START\*  
12/1/88

APPLICATION FOR PERMIT TO DRILL, DEEPEN, OR PLUG BACK

1a. TYPE OF WORK  
DRILL ☐ DEEPEN ☐ PLUG BACK ☒

b. TYPE OF WELL  
OIL WELL ☒ GAS WELL ☐ OTHER Re-entry SINGLE ZONE ☒ MULTIPLE ZONE ☐

2. NAME OF OPERATOR  
Bright & Company

3. ADDRESS OF OPERATOR  
3200 W. Cuthbert, Ste. 2-C, Midland, TX 79701

4. LOCATION OF WELL (Report location clearly and in accordance with any State requirements.)\*  
At surface  
660' FNL & 330' FEL, Section 21, T-8-S, R-36-E  
At proposed prod. zone  
Same as above

5. DISTANCE IN MILES AND DIRECTION FROM NEAREST TOWN OR POST OFFICE\*  
7 miles north and 5 miles east of Crossroads, NM

6. DISTANCE FROM PROPOSED\* LOCATION TO NEAREST PROPERTY OR LEASE LINE, FT. (Also to nearest drlg. unit line, if any)  
330'

7. DISTANCE FROM PROPOSED LOCATION\* TO NEAREST WELL, DRILLING, COMPLETED, OR APPLIED FOR, ON THIS LEASE, FT.  
None

8. ELEVATIONS (Show whether DF, RT, GR, etc.)  
4104' GR 4116' KB

9. APPROX. DATE WORK WILL START\*  
12/1/88

PROPOSED CASING AND CEMENTING PROGRAM

| SIZE OF HOLE | SIZE OF CASING | WEIGHT PER FOOT | SETTING DEPTH | QUANTITY OF CEMENT |
|--------------|----------------|-----------------|---------------|--------------------|
| 17"          | 11-3/4"        | 47              | 354'          | 350 SXS            |
| 12-3/4"      | 8-5/8"         | 32              | 4116'         | 400 SXS            |
| 7-7/8"       | 4-1/2"         | 11.6            | 9200          | 350 SXS            |

This well was D&A in November 1963, by Charles Read. Operator plans to re-enter well and test the Abo at 8950-8992'. The procedure is as follows:

1. Drill out plugs at 0-75', 300-400', and 650-750' (top of 8-5/8" at 724').
2. Run casing patch and 8-5/8" casing to 724' and tie back cement to surface.
3. Squeeze perfs at 1400', 1320', 1200', 1000', 900', and 820'.
4. Drill out squeeze plugs and pressure test casing to 1000#.
5. Clean out to 9200'.
6. Run 4-1/2" casing set at 9200' bringing cement back to 8000'.
7. Run CBL, GR/N/CCL.
8. Perforate Abo at 8950-8992'.
9. Acidize perforations.
10. Test well.

Aetna \$50,000 Blanket Bond #18-S-100195355  
Anticipate using a 5000 psi double hydraulically operated BOP and will be tested daily.

IN ABOVE SPACE DESCRIBE PROPOSED PROGRAM: If proposal is to deepen or plug back, give data on present productive zone and proposed new productive zone. If proposal is to drill or deepen directionally, give pertinent data on subsurface locations and measured and true vertical depths. Give blowout preventer program, if any.

24. SIGNED Jack Carlile TITLE Geologist DATE 9/26/88

(This space for Federal or State office use)

PERMIT NO. \_\_\_\_\_ APPROVAL DATE \_\_\_\_\_

APPROVED BY S/Levi Deike, Acting TITLE Area Manager DATE DEC 15 1988

CONDITIONS OF APPROVAL, IF ANY, DOES NOT WARRANT OR CERTIFY THAT THE TITLE TO THOSE AREAS WHICH WOULD BE USED FOR CONDUCT OPERATIONS THEREON, ENTITLED TO THE APPROVAL OF THE BUREAU OF LAND MANAGEMENT, IS NOT SUBJECT TO THE PROVISIONS OF THE FEDERAL LAND POLYMER ACT, 43 U.S.C. SECTION 1001, MAKES IT A CRIME FOR ANY PERSON KNOWINGLY AND WILLFULLY TO MAKE TO ANY DEPARTMENT OR AGENCY OF THE UNITED STATES ANY FALSE, FICTITIOUS OR FRAUDULENT STATEMENTS OR REPRESENTATIONS AS TO ANY MATTER WITHIN ITS JURISDICTION.

PLEASE BE ADVISED THAT THERE WILL BE NO EXCAVATION OF FEDERALLY OWNED MINERAL MATERIAL FOR CONSTRUCTION OF THE ACCESS ROAD OR PAD WITHOUT PAYMENT.

## OIL CONSERVATION DIVISION

STATE OF NEW MEXICO  
ENERGY AND MINERALS DEPARTMENTP. O. BOX 2088  
SANTA FE, NEW MEXICO 87501Form C-102  
Revised 10-1-79

All distances must be from the outer boundaries of the Section.

|                              |               |                |                       |                     |               |
|------------------------------|---------------|----------------|-----------------------|---------------------|---------------|
| Operator<br>Bright & Company |               |                | Lease<br>Norman Bates |                     | Well No.<br>1 |
| Unit Letter<br>A             | Section<br>21 | Township<br>8S | Range<br>36E          | County<br>Roosevelt |               |

Actual Footage Location of Well:

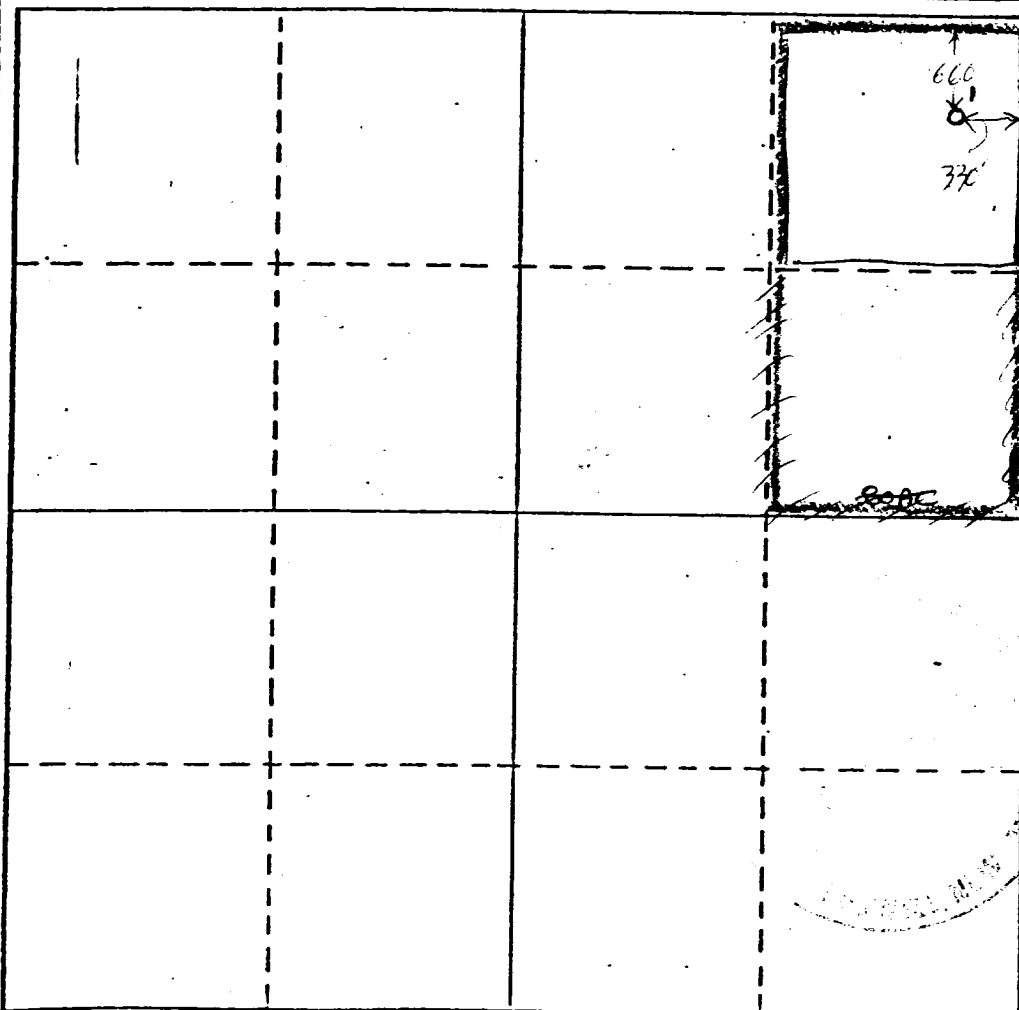
|                                  |  |   |  |
|----------------------------------|--|---|--|
| 660 feet from the North line and |  | 330 feet from the East line                     |  |
| Ground Level Elev.<br>4104       | Producing Formation<br><del>Abo</del> <i>walferang</i> | Pool<br><del>Wildcat</del> <i>South Prairie</i> | Dedicated Acreage:<br>40 <del>80</del> Acres |

1. Outline the acreage dedicated to the subject well by colored pencil or hatchure marks on the plat below.
2. If more than one lease is dedicated to the well, outline each and identify the ownership thereof (both as to working interest and royalty).
3. If more than one lease of different ownership is dedicated to the well, have the interests of all owners been consolidated by communitization, unitization, force-pooling, etc?

☐ Yes ☐ No If answer is "yes," type of consolidation \_\_\_\_\_

If answer is "no," list the owners and tract descriptions which have actually been consolidated. (Use reverse side of this form if necessary.) \_\_\_\_\_

No allowable will be assigned to the well until all interests have been consolidated (by communitization, unitization, forced-pooling, or otherwise) or until a non-standard unit, eliminating such interests, has been approved by the Division.



## CERTIFICATION

I hereby certify that the information contained herein is true and complete to the best of my knowledge and belief.

|          |                  |
|----------|------------------|
| Name     | Jack Carlile     |
| Position | Geologist        |
| Company  | Bright & Company |
| Date     | 9/26/88          |

I hereby certify that the well location shown on this plat was plotted from field notes of actual surveys made by me or under my supervision, and that the same is true and correct to the best of my knowledge and belief.

|                          |
|--------------------------|
| Re-enter old well        |
| Date Surveyed            |
| Registered Land Surveyor |

Certificate No.

0 330 660 990 1320 1650 1980 2310 2640 2000 1500 1000 500 0

NEW MEXICO OIL CONSERVATION COMMISSION  
WELL LOCATION AND ACREAGE DEDICATION PLAT

FORM C-128  
Revised 5/1/57

SEE INSTRUCTIONS FOR COMPLETING THIS FORM ON THE REVERSE SIDE

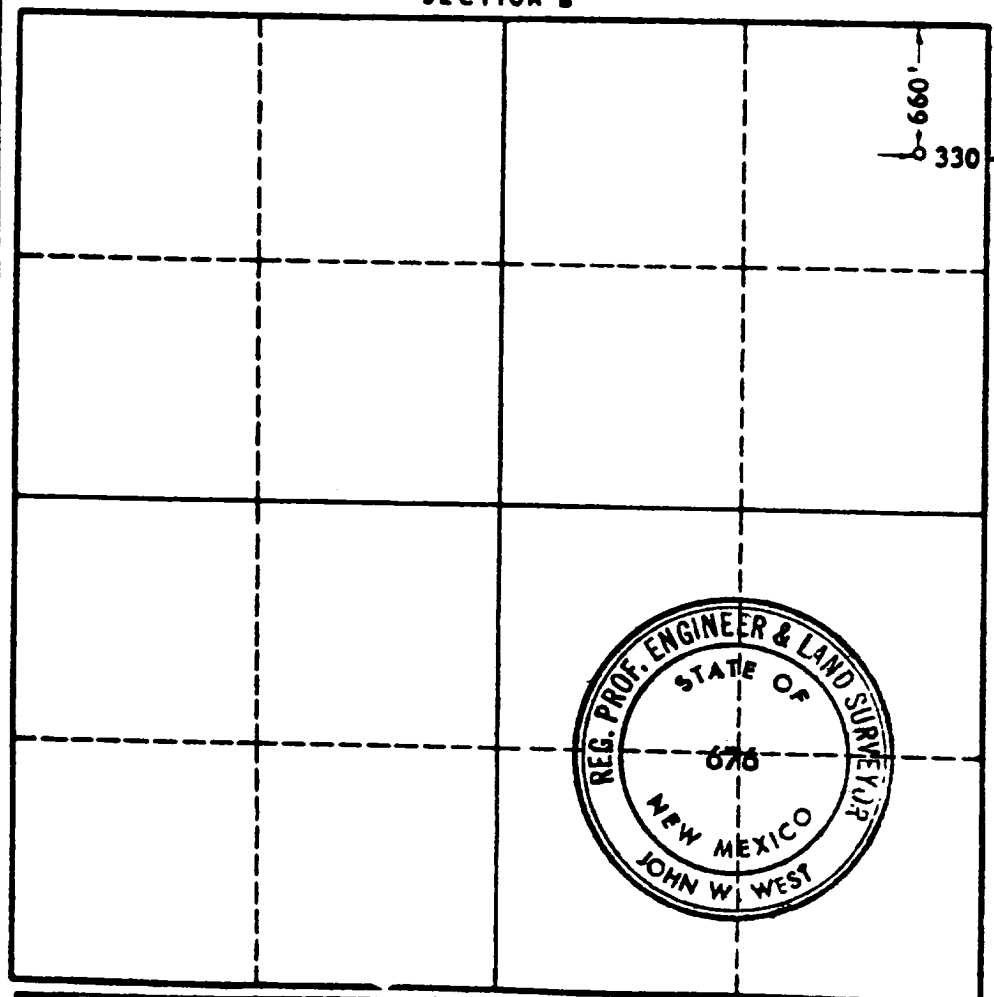
SECTION A

|  |                                    |                            |                                   |                                       |                      |
|--|------------------------------------|----------------------------|-----------------------------------|---------------------------------------|----------------------|
| Operator<br><b>CHARLES B. READ</b>   |                                    |                            | Lease<br><b>BATES</b>             |                                       | Well No.<br><b>1</b> |
| Unit Letter<br><b>A</b>  | Section<br><b>21</b>               | Township<br><b>8 SOUTH</b> | Range<br><b>36 EAST</b>           | County<br><b>CHAVIN Roosevelt</b>     |                      |
| Actual Footage Location of Well:<br><b>660</b> feet from the <b>NORTH</b> line and <b>330</b> feet from the <b>EAST</b> line |                                    |                            |                                   |                                       |                      |
| Ground Level Elev.   | Producing Formation<br><b>Penn</b> |                            | Pool<br><b>South Prairie Penn</b> | Dedicated Acreage:<br><b>80</b> Acres |                      |

1. Is the Operator the only owner in the dedicated acreage outlined on the plat below? YES X NO \_\_\_\_ . ("Owner" means the person who has the right to drill into and to produce from any pool and to appropriate the production either for himself or for himself and another. (65-3-29 (e) NMSA 1955 Comp.)
2. If the answer to question one is "no," have the interests of all the owners been consolidated by communitization agreement or otherwise? YES \_\_\_\_ NO \_\_\_\_ . If answer is "yes," Type of Consolidation \_\_\_\_
3. If the answer to question two is "no," list all the owners and their respective interests below:

| Owner | Land Description |
|-------|------------------|
|       |                  |
|       |                  |

SECTION B



CERTIFICATION

I hereby certify that the information in SECTION A above is true and complete to the best of my knowledge and belief.

|          |                    |
|----------|--------------------|
| Name     | <i>A. L. Smith</i> |
| Position | Agent              |
| Company  | Charles B. Read    |
| Date     | November 14, 1963  |

I hereby certify that the well location shown on the plat in SECTION B was plotted from field notes of actual surveys made by me or under my supervision, and that the same is true and correct to the best of my knowledge and belief.

|  |                     |
|--|---------------------|
| Date Surveyed  | NOVEMBER 13, 1963   |
| Registered Professional Engineer and/or Land Surveyor, | JOHN W. WEST        |
| Certificate No.  | <i>John W. West</i> |
| N. M. - P. E. & L. S. NO. 676                          |                     |

APPLICATION FOR DRILLING

BRIGHT & COMPANY  
NORMAN BATES #1  
660' FNL & 330' FEL  
SECTION 21, T-8-S, R-36-E  
ROOSEVELT COUNTY, NEW MEXICO

BLM LEASE NO. 77112  
WILDCAT RE-ENTRY FOR  
ABO FORMATION PRODUCTION



In conjunction with Form 3160-3 and C-102 Bright & Company submits the following items of pertinent information in accordance with Bureau of Land Management requirements.

1. This surface geological formation is Quaternary Alluvium and other surface deposits.
2. The estimated tops of recognizable geologic markers are as follows -

|              |       |
|--------------|-------|
| T/Yates      | 2810' |
| T/San Andres | 4044' |
| T/Tubb       | 6933' |
| T/Abo        | 8954' |
| T/Wolfcamp   | 9100' |

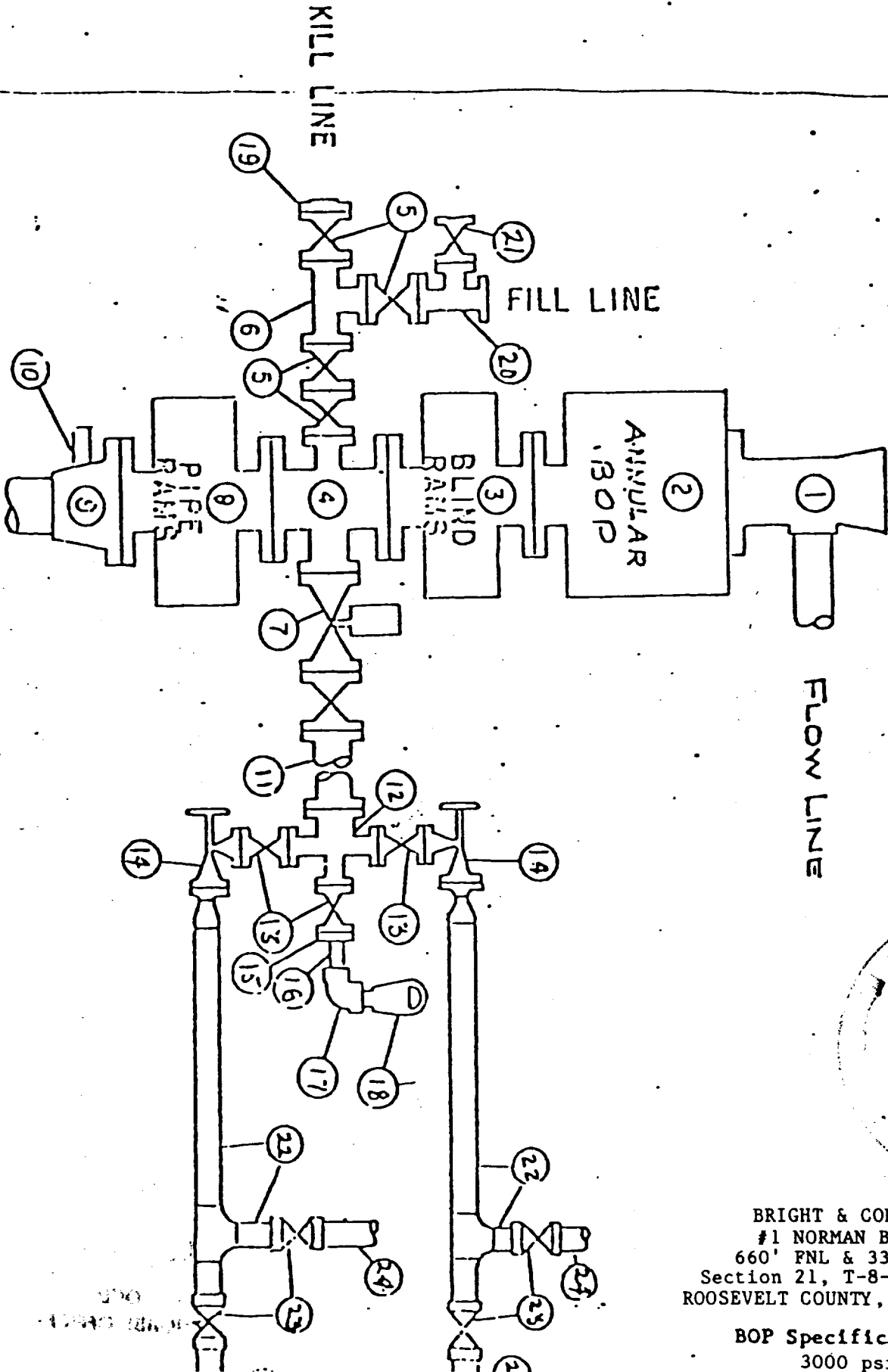
3. The estimated depth at which water, oil or gas formations are expected to be encountered -

Water: Random fresh water sands from surface to 300'  
(cased off previously; see 3160-3).  
Oil: Abo 8954-8992'

4. Proposed Casing Program - See Form 3160-3.
5. Pressure Control Equipment - BOP (5000' psi 900 series). Double hydraulically operated BOP with both blind and pipe rams complete with kill line, fill line and remote crank arm for BOP control.
6. Testing, Logging and Coring Program  

|          |  |
|----------|--|
| Testing: | Production test only   |
| Logging: | CBL, GR/N/CCL from 9250'-surface at selected intervals to include all tops of cements and casing setting depths. |
| Coring:  | None   |

# WEK DRILLING CO., INC. - Rig 2 BLOWOUT PREVENTER SPECIFICATION



BRIGHT & COMPANY  
 #1 NORMAN BATES  
 660' FNL & 330' FEL  
 Section 21, T-8-S, R-36-E  
 ROOSEVELT COUNTY, NEW MEXICO

BOP Specifications  
 3000 psi