

**NEW MEXICO OIL CONSERVATION COMMISSION
WELL LOCATION AND ACREAGE DEDICATION PLAT**

Form C-102
Supersedes C-
Effective 1-1-6

All distances must be from the outer boundaries of the Section.

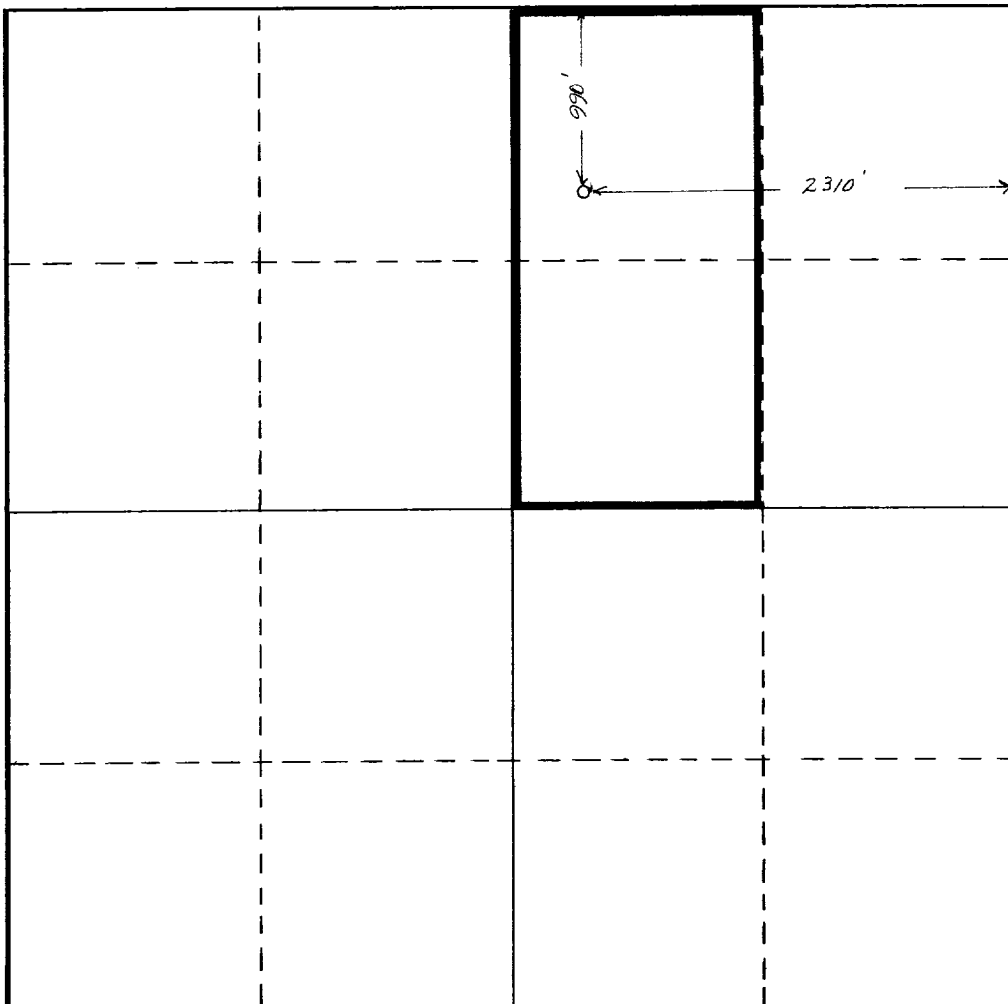
Operator Sunray DX Oil Company			Lease New Mexico State <i>Nov 9 1 09 PM '65</i>		Well No. 1
Unit Letter B	Section 36	Township 7S	Range 35E	County Roosevelt	
Actual Footage Location of Well: 990 feet from the North line and 2310 feet from the East line					
Ground Level Elev. 4160	Producing Formation San Andres		Pool Todd - San Andres		Dedicated Acreage: 80 Acres

1. Outline the acreage dedicated to the subject well by colored pencil or hatchure marks on the plat below.
2. If more than one lease is dedicated to the well, outline each and identify the ownership thereof (both as to working interest and royalty).
3. If more than one lease of different ownership is dedicated to the well, have the interests of all owners been consolidated by communitization, unitization, force-pooling, etc?

☐ Yes ☐ No If answer is "yes," type of consolidation _____

If answer is "no," list the owners and tract descriptions which have actually been consolidated. (Use reverse side of this form if necessary.) _____

No allowable will be assigned to the well until all interests have been consolidated (by communitization, unitization, forced-pooling, or otherwise) or until a non-standard unit, eliminating such interests, has been approved by the Commission.



CERTIFICATION

I hereby certify that the information contained herein is true and complete to the best of my knowledge and belief.

Name

B. F. Brawley

Position

District Engineer

Company

Sunray DX Oil Company

Date

November 11, 1965

I hereby certify that the well location shown on this plat was plotted from field notes of actual surveys made by me or under my supervision, and that the same is true and correct to the best of my knowledge and belief.

Date Surveyed

December 22, 1964

Registered Professional Engineer
and/or Land Surveyor

John W. West

Certificate No.

N.M.P.E. & L.S. No. 676

