

REVISED
 NEW MEXICO OIL CONSERVATION COMMISSION
 WELL LOCATION AND ACREAGE DEDICATION PLAT

Form C-102
 Supersedes C-128
 Effective 1-1-65 -

All distances must be from the outer boundaries of the Section.

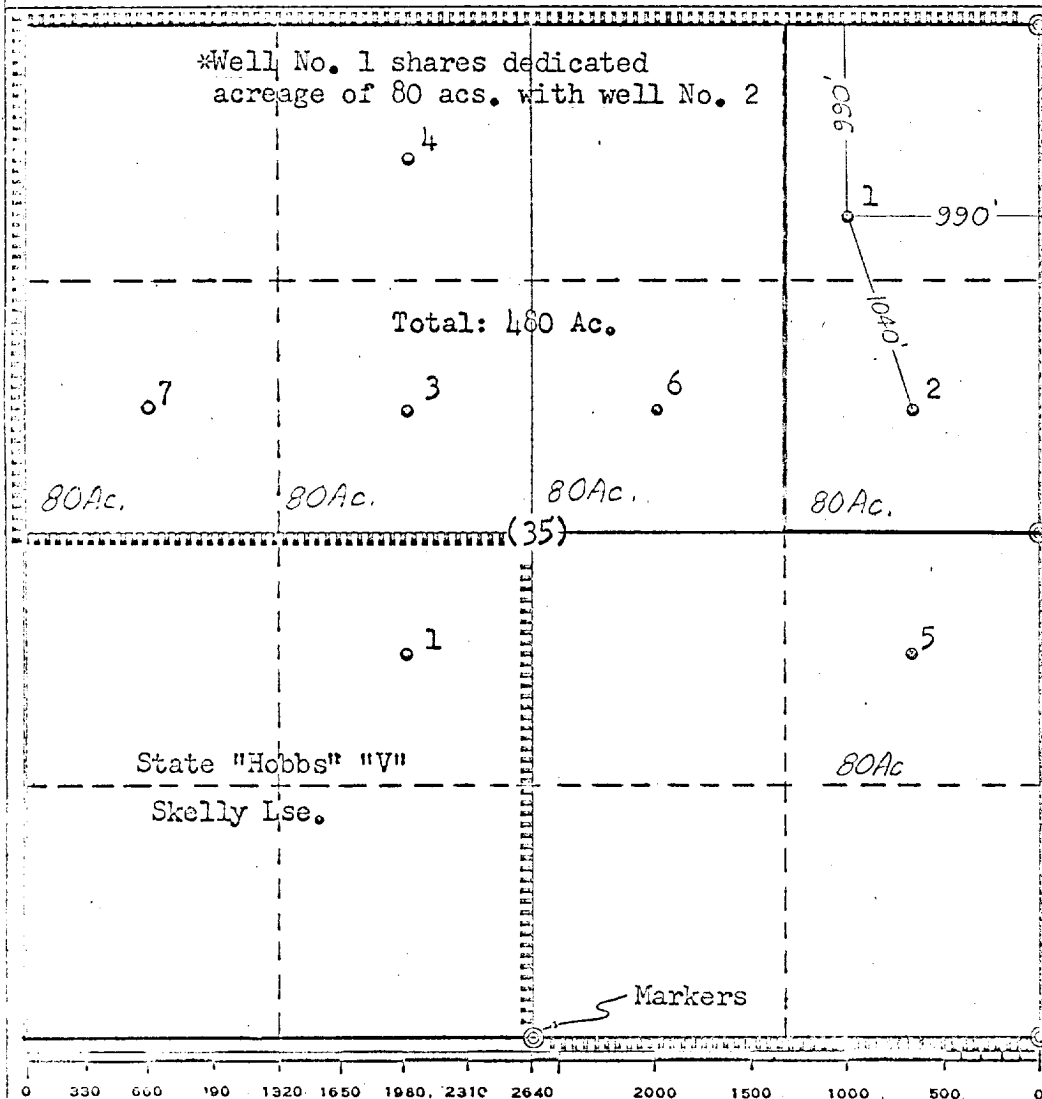
Operator TEXACO Inc.			Lease New Mexico "CT" State		Well No. 1
Unit Letter A	Section 35	Township 7 South	Range 35 East	County Roosevelt	
Actual Footage Location of Well: 990 feet from the North line and 990 feet from the East line Sec. 35					
Ground Level Elev. 4169'	Producing Formation San Andres	Pool Todd-Lower San Andres		Dedicated Acreage: 80 Acres	

1. Outline the acreage dedicated to the subject well by colored pencil or hatchure marks on the plat below.
2. If more than one lease is dedicated to the well, outline each and identify the ownership thereof (both as to working interest and royalty).
3. If more than one lease of different ownership is dedicated to the well, have the interests of all owners been consolidated by communitization, unitization, force-pooling, etc?

☐ Yes ☐ No If answer is "yes," type of consolidation _____

If answer is "no," list the owners and tract descriptions which have actually been consolidated. (Use reverse side of this form if necessary.) _____

No allowable will be assigned to the well until all interests have been consolidated (by communitization, unitization, forced-pooling, or otherwise) or until a non-standard unit, eliminating such interests, has been approved by the Commission.



CERTIFICATION

I hereby certify that the information contained herein is true and complete to the best of my knowledge and belief.

T. G. Landwermyer
 Name

T. G. Landwermyer

Position

Asst. Div. Civil Engineer

Company

TEXACO Inc.

Date

4/7/67

I hereby certify that the well location shown on this plat was plotted from field notes of actual surveys made by me or under my supervision, and that the same is true and correct to the best of my knowledge and belief.

Date Surveyed

7/31/64

Registered Professional Engineer and/or Land Surveyor

T. G. Landwermyer
T. G. Landwermyer

Certificate No.

17617

**NEW MEXICO OIL CONSERVATION COMMISSION
WELL LOCATION AND ACREAGE DEDICATION PLAT**

Form C-102
Supersedes C-128
Effective 1-1-65

All distances must be from the outer boundaries of the Section.

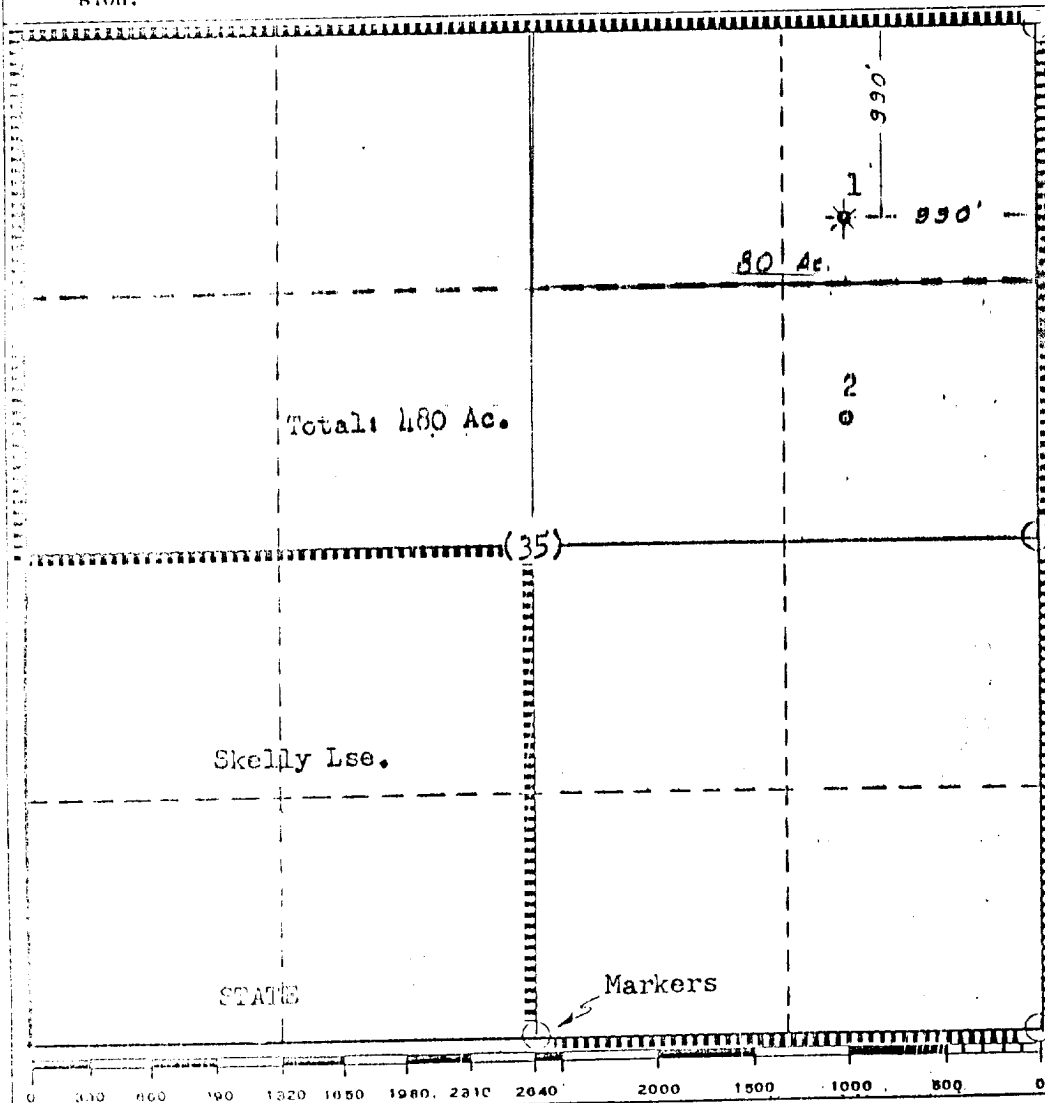
Operator TEXACO Inc.		Lease State of New Mexico "CTI"		Well No. 1
Unit Letter A	Section 35	Township 7 South	Range 35 East	County Roosevelt
Actual Footage Location of Well: <div style="display: flex; justify-content: space-between;"> 990 feet from the North 990 feet from the East </div>				
Current Type of Flow 4169	Producing Formation San Andres	Foot Todd (San Andres)	Dedicated Acreage 80 Acres	

1. Outline the acreage dedicated to the subject well by colored pencil or hatchure marks on the plat below.
2. If more than one lease is dedicated to the well, outline each and identify the ownership thereof (both as to working interest and royalty).
3. If more than one lease of different ownership is dedicated to the well, have the interests of all owners been consolidated by communitization, unitization, force-pooling, etc?

☐ Yes ☐ No If answer is "yes," type of consolidation _____

If answer is "no," list the owners and tract descriptions which have actually been consolidated. (Use reverse side of this form if necessary.) _____

No allowable will be assigned to the well until all interests have been consolidated (by communitization, unitization, forced-pooling, or otherwise) or until a non-standard unit, eliminating such interests, has been approved by the Commission.



CERTIFICATION	
I hereby certify that the information contained herein is true and complete to the best of my knowledge and belief.	
Name	J. J. Velten
Position	Division Civil Engineer
Company	TEXACO Inc.
Date	11/12/65
I hereby certify that the well location shown on this plat was plotted from field notes of actual surveys made by me or under my supervision, and that the same is true and correct to the best of my knowledge and belief.	
Date Surveyed	7/31/64
Registered Professional Engineer and/or Land Surveyor	J. J. Velten
Certificate No.	8174