

UNITED STATES
DEPARTMENT OF THE INTERIOR
GEOLOGICAL SURVEY

APPLICATION FOR PERMIT TO DRILL, DEEPEN, OR PLUG BACK

1a. TYPE OF WORK

DRILL ☒DEEPEN ☐PLUG BACK ☐

b. TYPE OF WELL

OIL
WELL ☒GAS
WELL ☐

OTHER

SINGLE
ZONE ☒MULTIPLE
ZONE ☐

2. NAME OF OPERATOR

FRANKLIN, ASTON & FAIR, INC.

3. ADDRESS OF OPERATOR

P. O. Box 1090, Roswell, New Mexico

4. LOCATION OF WELL (Report location clearly and in accordance with any State requirements.*)

At surface

1650' FEL, 330' FSL of Sec. 25, T. 7 S., R. 35 E.

At proposed prod. zone

14. DISTANCE IN MILES AND DIRECTION FROM NEAREST TOWN OR POST OFFICE*

3 3/4 miles northeast of Milnesand, N.M., by road.

15. DISTANCE FROM PROPOSED*

LOCATION TO NEAREST
PROPERTY OR LEASE LINE, FT.
(Also to nearest drlg. line, if any)

330'

16. NO. OF ACRES IN LEASE

920

17. NO. OF ACRES ASSIGNED
TO THIS WELL

40

18. DISTANCE FROM PROPOSED LOCATION*

TO NEAREST WELL, DRILLING, COMPLETED,
OR APPLIED FOR, ON THIS LEASE, FT.

2640'

19. PROPOSED DEPTH

4400'

20. ROTARY OR CABLE TOOLS

Rotary

21. ELEVATIONS (Show whether DF, RT, GR, etc.)

4154.1 Ground Level

22. APPROX. DATE WORK WILL START*

August 18, 1965

23.

PROPOSED CASING AND CEMENTING PROGRAM

SIZE OF HOLE	SIZE OF CASING	WEIGHT PER FOOT	SETTING DEPTH	QUANTITY OF CEMENT
12 3/4"	8 5/8"	20#	275'	150 sx
7 7/8"	5 1/2"	14#	4400'	200 sx

IN ABOVE SPACE DESCRIBE PROPOSED PROGRAM: If proposal is to deepen or plug back, give data on present productive zone and proposed new productive zone. If proposal is to drill or deepen directionally, give pertinent data on subsurface locations and measured and true vertical depths. Give blowout prevention program, if any.

24.

SIGNED

TITLE

President

DATE

August 12, 1965

(This space for Federal or State office use)

PERMIT NO.

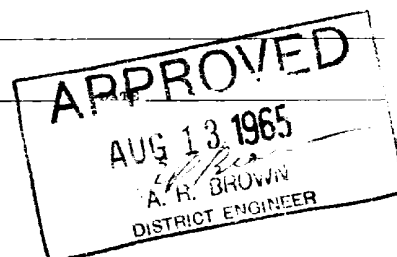
APPROVAL DATE

APPROVED BY

TITLE

CONDITIONS OF APPROVAL, IF ANY:

*See Instructions On Reverse Side



NEW MEXICO OIL CONSERVATION COMMISSION
WELL LOCATION AND ACREAGE DEDICATION PLAT

Form C-102
Supersedes C-128
Effective 1-1-65

All distances must be from the outer boundaries of the Section.

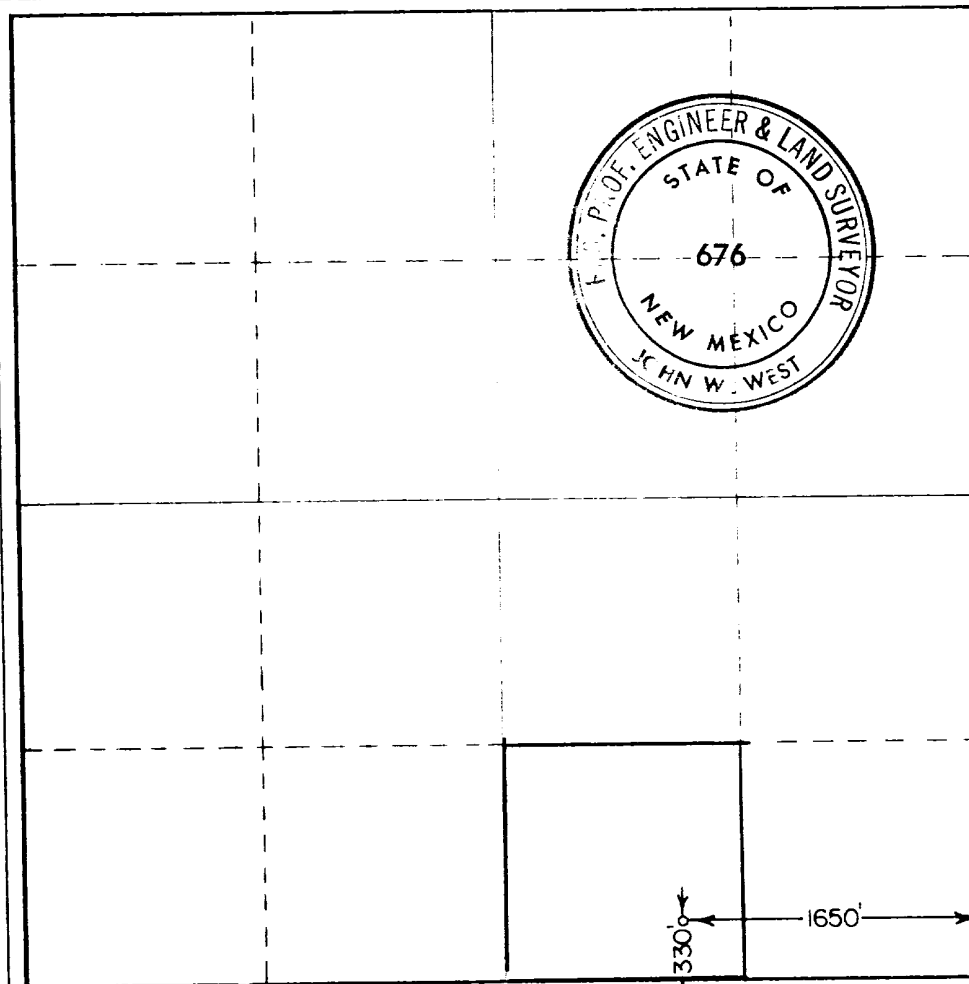
Operator FRANKLIN, ASTON & FAIR, INC.		Lease MARK FEDERAL		Well No. 5
Unit Letter O	Section 25	Township 7 SOUTH	Range 35 EAST	County ROOSEVELT
Actual Footage Location of Well: 330 feet from the SOUTH line and 1650 feet from the EAST line				
Ground Level Elev. 4154.1	Producing Formation San Andres	Pool Undesignated	Dedicated Acreage 40 Acres	

1. Outline the acreage dedicated to the subject well by colored pencil or hatchure marks on the plat below.
2. If more than one lease is dedicated to the well, outline each and identify the ownership thereof (both as to working interest and royalty).
3. If more than one lease of different ownership is dedicated to the well, have the interests of all owners been consolidated by communitization, unitization, force-pooling, etc?

☐ Yes ☐ No If answer is "yes," type of consolidation _____

If answer is "no," list the owners and tract descriptions which have actually been consolidated. (Use reverse side of this form if necessary.) _____

No allowable will be assigned to the well until all interests have been consolidated (by communitization, unitization, forced-pooling, or otherwise) or until a non-standard unit, eliminating such interests, has been approved by the Commission.



CERTIFICATION

I hereby certify that the information contained herein is true and complete to the best of my knowledge and belief.

Name
R. R. Austin

Position
President

Company
Franklin, Aston & Fair, Inc.

Date
August 12, 1965

I hereby certify that the well location shown on this plat was plotted from field notes of actual surveys made by me or under my supervision, and that the same is true and correct to the best of my knowledge and belief.

Date Surveyed
8-7-65

Registered Professional Engineer and/or Land Surveyor

John W. West
Certificate No. **676**