

UNITED STATES  
DEPARTMENT OF THE INTERIOR  
GEOLOGICAL SURVEY

SUBMIT IN TRIPLICATE\*  
Other instructions on  
reverse side

Form approved.  
Budget Bureau No. 42-R1425.

APPLICATION FOR PERMIT TO DRILL, DEEPEN, OR PLUG BACK

1a. TYPE OF WORK

DRILL ☒

DEEPEN ☐

PLUG BACK ☐

b. TYPE OF WELL

OIL  
WELL ☒

GAS  
WELL ☐

OTHER ☐

SINGLE  
ZONE ☒

MULTIPLE  
ZONE ☐

2. NAME OF OPERATOR

*Pan American Petroleum Corp.*

3. ADDRESS OF OPERATOR

*Box 68 Hobbs, N.M. 88240*

4. LOCATION OF WELL (Report location clearly and in accordance with any State requirements.)  
At surface

*660' FSL X 660' FEL, SEC. 28 (UNIT P, SE 1/4 SE 1/4)*  
At proposed prod. zone

14. DISTANCE IN MILES AND DIRECTION FROM NEAREST TOWN OR POST OFFICE\*

*Approx 16 mi NW of Milnesand, N.M.*

15. DISTANCE FROM PROPOSED\*

LOCATION TO NEAREST  
PROPERTY OR LEASE LINE, FT.  
(Also to nearest drlg. line, if any)

18. DISTANCE FROM PROPOSED LOCATION\*

TO NEAREST WELL, DRILLING, COMPLETED,  
OR APPLIED FOR, ON THIS LEASE, FT.

16. NO. OF ACRES IN LEASE

*2160*

19. PROPOSED DEPTH

*4500'*

17. NO. OF ACRES ASSIGNED  
TO THIS WELL

*40*

20. ROTARY OR CABLE TOOLS

*Rotary*

21. ELEVATIONS (Show whether DF, RT, GR, etc.)

22. APPROX. DATE WORK WILL START\*

*11-24-65*

23. PROPOSED CASING AND CEMENTING PROGRAM

SIZE OF HOLE	SIZE OF CASING	WEIGHT PER FOOT	SETTING DEPTH	QUANTITY OF CEMENT
<i>11-12 1/4"</i>	<i>8 5/8</i>	<i>24</i>	<i>425'</i>	<i>Circulate</i>
<i>7 7/8"</i>	<i>4 1/2</i>	<i>9.5</i>	<i>4500'</i>	<i>Fill 600' above pay</i>

*After drilling well, logs will be run and  
evaluations made, perforating and  
stimulating as necessary for attempting  
Commercial production.*

IN ABOVE SPACE DESCRIBE PROPOSED PROGRAM: If proposal is to deepen or plug back, give data on present productive zone and proposed new productive zone. If proposal is to drill or deepen directionally, give pertinent data on subsurface locations and measured and true vertical depths. Give blowout preventer program, if any.

24.

Original Signatures  
V. A. STALLER

SIGNED

TITLE

*Area Supt.*

DATE

*11-17-65*

(This space for Federal or State office use)

PERMIT NO.

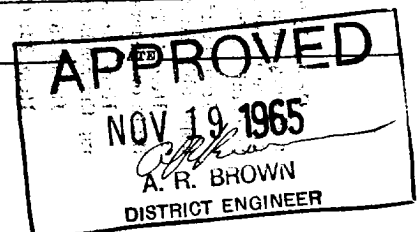
APPROVAL DATE

APPROVED BY

CONDITIONS OF APPROVAL, IF ANY:

TITLE

\*See Instructions On Reverse Side



*6+12)*  
*049-4565*  
*1-JWB*  
*2-Champlin*  
*1-Warren Ager*  
*1-Kern Co.*  
*1-John Brown*  
*1-L. A. P.*  
*1-W/S*

NEW MEXICO OIL CONSERVATION COMMISSION  
WELL LOCATION AND ACREAGE DEDICATION

HOBBS OFFICE O. C. C.

Form C-102  
Supersedes C-128  
Effective 1-1-65

NOV 23 11 02 AM '65

All distances must be from the outer boundaries of the Section.

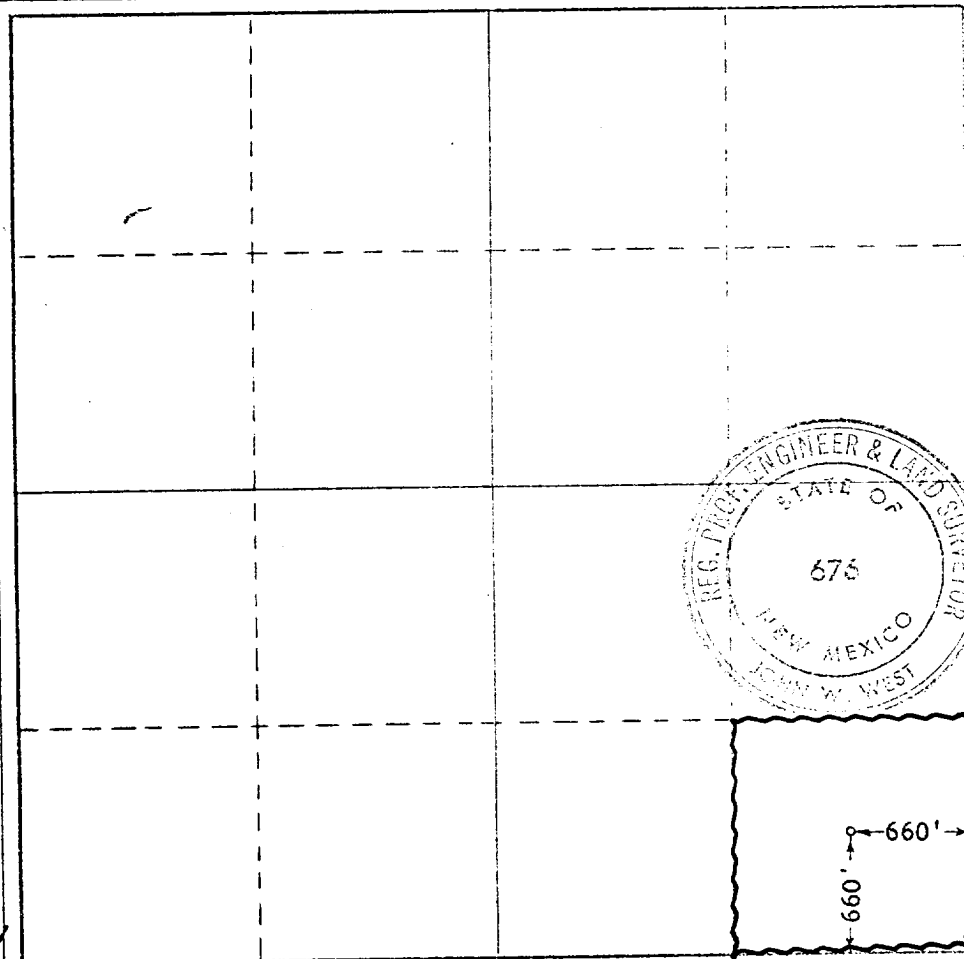
Operator <b>PAN AMERICAN PETROLEUM CORP.</b>			Lease <b>J.F. FARRELL - USA</b>		Well No. <b>6</b>
Unit Letter <b>P</b>	Section <b>28</b>	Township <b>7 SOUTH</b>	Range <b>33 EAST</b>	County <b>ROOSEVELT</b>	
Actual Footage Location of Well:					
<b>660</b>	feet from the	<b>SOUTH</b>	line and	<b>660</b>	feet from the
Ground Level Elev.		Producing Formation <b>San Andres</b>	Pool <b>Chaveroo-San Andres</b>	Dedicated Acreage <b>40</b>	Acres

- Outline the acreage dedicated to the subject well by colored pencil or hatchure marks on the plat below.
- If more than one lease is dedicated to the well, outline each and identify the ownership thereof (both as to working interest and royalty).
- If more than one lease of different ownership is dedicated to the well, have the interests of all owners been consolidated by communitization, unitization, force-pooling, etc?

☐ Yes ☐ No If answer is "yes," type of consolidation \_\_\_\_\_

If answer is "no," list the owners and tract descriptions which have actually been consolidated. (Use reverse side of this form if necessary.) \_\_\_\_\_

No allowable will be assigned to the well until all interests have been consolidated (by communitization, unitization, forced-pooling, or otherwise) or until a non-standard unit, eliminating such interests, has been approved by the Commission.



CERTIFICATION

I hereby certify that the information contained herein is true and complete to the best of my knowledge and belief.

Name of Person  
**JOHN W. WEST**

Position  
**M. S. STAFF**

By  
**Area Supt.**

Company  
**Pan American Petro Corp.**

Date  
**11-17-65**

I hereby certify that the well location shown on this plat was plotted from field notes of actual surveys made by me or under my supervision, and that the same is true and correct to the best of my knowledge and belief.

Date Surveyed

**11-13-65**

Registered Professional Engineer and/or Land Surveyor

**John W. West**

Certificate No.

N.M. P.E. & L.S. No. 676

310 660 190 1320 1650 1980 2310 2640 2000 1500 1000 500