

OPR		MIDWEST OIL CORPORATION		MAP	
4		Morgan-Federal Tract I			
Sec. 27, T-7-S, R-33-E		CO-ORD			
1980' FSL, 1980' FWL of Sec.					
Spd 2-4-66		CLASS		EL	
Cmp 2-20-66		FORMATION	DATUM	FORMATION	DATUM
CSG & SX - TUBING					
8 5/8" 356' 300					
4 1/2" 4419' 300					
LOGS EL GR RA IND HC A					
		TD 4420'			

IP San Andres Perfs 4191-4306' Flwd 280 BOPD. Pot. Based on
24 hr test thru 20/64" chk., TP 620#, Gravity 24., GOR 465.

Distribution limited and publication prohibited by subscribers' agreement.
Reproduction rights reserved by Williams & Lee Scouting Service, Inc.

CONT.	PROP DEPTH 4500'	TYPE
DATE		

F.R. 1-20-66; Oper's Elev. 4398' GL
PD 4500' - SA
2-7-66 Drlg. 3067' anhy & gyp.
2-14-66 TD 4420', WO Completion Unit.
2-21-66 TD 4420', SI For Storage.
Perf @ 4191', 4197', 4225', 4236', 4240',
4253', 4261', 4270', 4284', 4300', 4306';
Ac (4191-4306') 2000 gals.
Frac (4191-4306') 20,000 gals oil +
20,000# sd.
Rec'd all load.
2-28-66 TD 4420', COMPLETED.
LOG TOP: Anhydrite 1875', Yates 2293',
Seven Rivers 2385', San Andres 3469'.

NEW MEXICO OIL CONSERVATION COMMISSION
WELL LOCATION AND ACREAGE DEDICATION PLAT

Form C-102
Supersedes C-128
Effective 1-1-65

All distances must be from the outer boundaries of the Section.

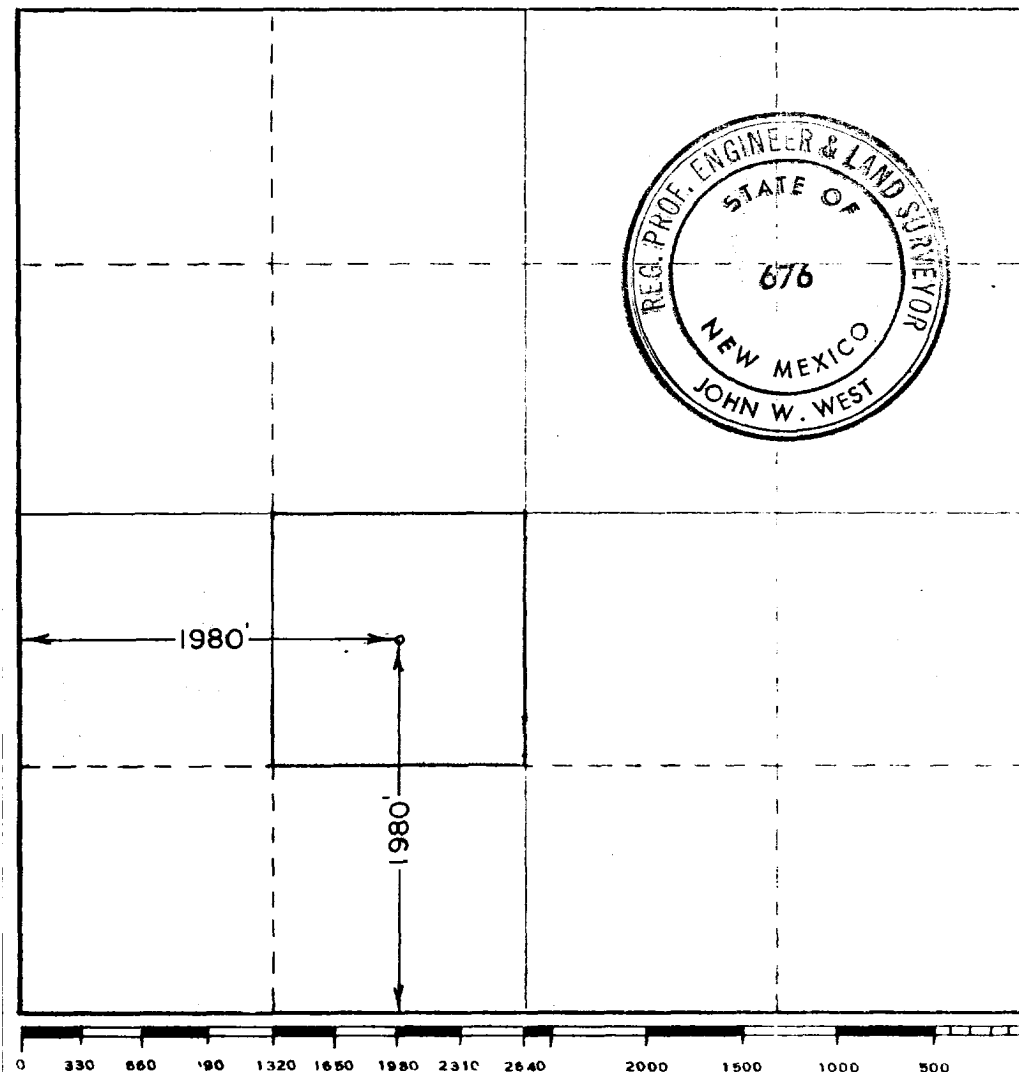
Operator MIDWEST OIL CORP.			Lease MORGAN FEDERAL TRACT NO. 4		
Unit Letter K	Section 27	Township 7 SOUTH	Range 33 EAST	County ROOSEVELT	
Actual Footage Location of Well: 1980 feet from the SOUTH line and 1980 feet from the WEST line					
Ground Level Elev. 4398.0	Producing Formation San Andres		Pool Shawnee	Dedicated Acreage: 40 Acres	

1. Outline the acreage dedicated to the subject well by colored pencil or hachure marks on the plat below.
2. If more than one lease is dedicated to the well, outline each and identify the ownership thereof (both as to working interest and royalty).
3. If more than one lease of different ownership is dedicated to the well, have the interests of all owners been consolidated by communitization, unitization, force-pooling, etc?

☐ Yes ☐ No If answer is "yes," type of consolidation _____

If answer is "no," list the owners and tract descriptions which have actually been consolidated. (Use reverse side of this form if necessary.) _____

No allowable will be assigned to the well until all interests have been consolidated (by communitization, unitization, forced-pooling, or otherwise) or until a non-standard unit, eliminating such interests, has been approved by the Commission.



CERTIFICATION

I hereby certify that the information contained herein is true and complete to the best of my knowledge and belief.

Name W. C. Miller, Jr.
District Clerk
For Midwest Oil Corporation
By my 1-7-66
Date

I hereby certify that the well location shown on this plat was plotted from field notes of actual surveys made by me or under my supervision, and that the same is true and correct to the best of my knowledge and belief.

Date Surveyed 11-15-65

Registered Professional Engineer and/or Land Surveyor

John W. West

Certificate No.

676