

**NEW MEXICO OIL CONSERVATION COMMISSION
WELL LOCATION AND ACREAGE DEDICATION PLAT**

Form C-102
Supersedes C-128
Effective 1-1-65

All distances must be from the outer boundaries of the Section **HOBBS OFFICE O. C. C.**

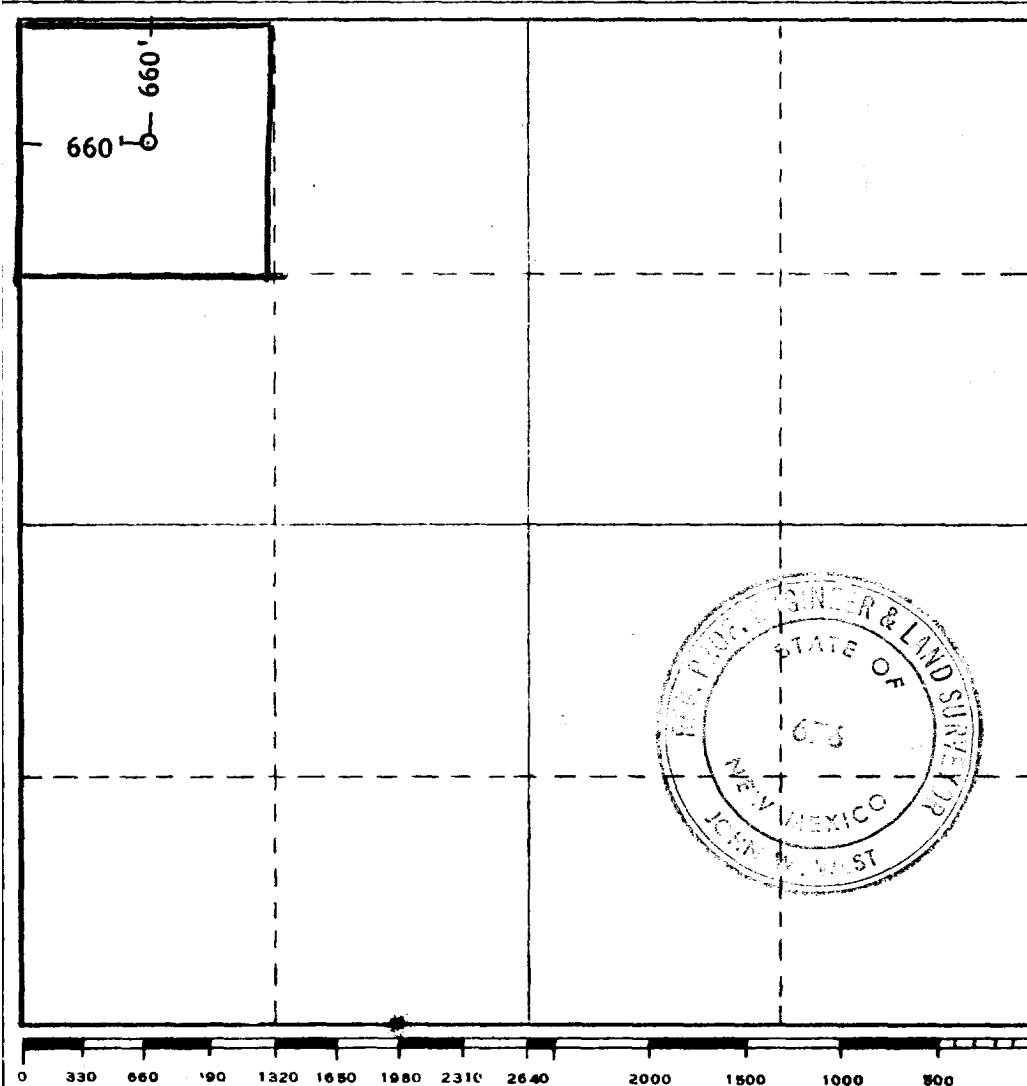
Operator MIDWEST OIL CORP.		Lease MORGAN FEDERAL TRACT		Well No. 4
Unit Letter D	Section 26	Township 7 SOUTH	Range 33 EAST	County ROOSEVELT
Actual Footage Location of Well: 660 feet from the NORTH line and 660 feet from the WEST line				
Ground Level Elev. 4368.0	Producing Formation San Andres	Pool Chavero	Dedicated Acreage: 40 Acres	

1. Outline the acreage dedicated to the subject well by colored pencil or hachure marks on the plat below.
2. If more than one lease is dedicated to the well, outline each and identify the ownership thereof (both as to working interest and royalty).
3. If more than one lease of different ownership is dedicated to the well, have the interests of all owners been consolidated by communitization, unitization, force-pooling, etc?

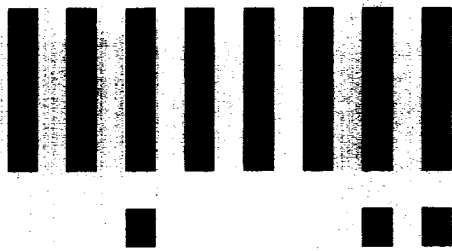
☐ Yes ☐ No If answer is "yes," type of consolidation _____

If answer is "no," list the owners and tract descriptions which have actually been consolidated. (Use reverse side of this form if necessary.) _____

No allowable will be assigned to the well until all interests have been consolidated (by communitization, unitization, forced-pooling, or otherwise) or until a non-standard unit, eliminating such interests, has been approved by the Commission.



CERTIFICATION	
I hereby certify that the information contained herein is true and complete to the best of my knowledge and belief.	
Name <i>[Signature]</i>	Position District Clerk
Company Midwest Oil Corporation	
Date February 15, 1966	
I hereby certify that the well location shown on this plat was plotted from field notes of actual surveys made by me or under my supervision, and that the same is true and correct to the best of my knowledge and belief.	
Date Surveyed FEB. 7, 1966	
Registered Professional Engineer and/or Land Surveyor <i>[Signature]</i>	
Certificate No.	676



LTR



Job separation sheet

OPR	MIDWEST OIL CORPORATION				MAP
4 Morgan-Federal Tract 2					
Sec. 26, T-7-S, R-33-E				CO-ORD	
660' FNL, 660' FWL of Sec.				MX 10456	
Spd 3-6-66		CLASS		EL	
Cmp 4-3-66		FORMATION	DATUM	FORMATION	DATUM
CSG & SX - TUBING					
8 5/8" 356' 300					
4 1/2" 4747' 350					
LOGS EL GR RA IND HC A					
		TD 4747'			

IP San Andres Perfs 4134-4361' Flwd 570 BOPD. Pot. Based on 24 hr test thru 20/64" ank., TP 475#, CF 980#, Gravity 26., GOR 1180.

Distribution limited and publication prohibited by subscribers' agreement.
Reproduction rights reserved by Williams & Lee Scouting Service, Inc.

CONT.	PROP DEPTH	1500'	TYPE
DATE			

F.R. 2-24-66
 PD 4500' - SA
 3-7-66 TD 358', WOO.
 3-14-66 Drlg. 4508'.
 Cored 4310-60', rec 50' anhy & dolo., w/
 show oil in 29'.
 3-21-66 TD 4747', prep to perf.
 Cored 4540-92', rec 52' grey to brown dolo.,
 w/scatt bldg oil.
 Cored 4592-4644', rec 52' dolo & anhy., w/sli
 bldg oil in 1'.
 Cored 4695-4747', rec 52' shly anhy., w/sli
 shows in 5'.

-66 TD 4747', Swbg load.
Perf @ 4320', 4321', 4331', 4333', 4334',
4335', 4336', 4353', 4354', 4356', 4358',
4361' W/l SPI
Ac (4320-61') 2000 gals.
Frac (4320-61') 30,000 gals oil + 20,000#
sd.
Swbd 124 BLO/9 hrs.
4-4-66 TD 4747', prep to potential.
Swbd 29 BLO in 9 hrs (4320-61')
Set BP @ 4290'
Perf @ 4134', 4148', 4181', 4192', 4195',
4212', 4214', 4216', 4223', 4237', 4244',
4266' W/l SPI
Ac (4134-4266') 2000 gals.
Frac (4134-4266') 30,000 gals oil +

20,000# sd.
Flwd @ rate of 10 BLO Per Hr thru
16/64" chk., TP 500#, CP 1000# (4134-4266')
4-11-66 TD 4747', COMPLETE.
Pulled BP @ 4290'
LOG TOPS: Yates 2270', San Andres 3458',
Slaughter 4122'.