

UNITED STATES
DEPARTMENT OF THE INTERIOR
GEOLOGICAL SURVEY

APPLICATION FOR PERMIT TO DRILL, DEEPEN, OR PLUG BACK

1a. TYPE OF WORK

DRILL ☒ DEEPEN ☐ PLUG BACK ☐

b. TYPE OF WELL

OIL WELL ☒ GAS WELL ☐ OTHER ☐ SINGLE ZONE ☒ MULTIPLE ZONE ☐

2. NAME OF OPERATOR

Midwest Oil Corporation

3. ADDRESS OF OPERATOR

1500 Wilco Bldg. Midland, Texas

4. LOCATION OF WELL (Report location clearly and in accordance with any State requirements.)*

At surface
660' FWL & 1980' FWL
At proposed prod. zone

14. DISTANCE IN MILES AND DIRECTION FROM NEAREST TOWN OR POST OFFICE*

14 miles west of Midland

15. DISTANCE FROM PROPOSED*

LOCATION TO NEAREST
PROPERTY OR LEASE LINE, FT.
(Also to nearest drig. unit line, if any)

660

18. DISTANCE FROM PROPOSED LOCATION*
TO NEAREST WELL, DRILLING, COMPLETED,
OR APPLIED FOR, ON THIS LEASE, FT.

1320

16. NO. OF ACRES IN LEASE

1680

19. PROPOSED DEPTH

4300

17. NO. OF ACRES ASSIGNED
TO THIS WELL

40

20. ROTARY OR CABLE TOOLS

Rotary

21. ELEVATIONS (Show whether DF, RT, GR, etc.)

4352.7

22. APPROX. DATE WORK WILL START*

immed.

23. PROPOSED CASING AND CEMENTING PROGRAM

SIZE OF HOLE	SIZE OF CASING	WEIGHT PER FOOT	SETTING DEPTH	QUANTITY OF CEMENT
11"	8 5/8"	30#	360	300
7 7/8"	4 1/2"	9.34	4300	300

Double BOP will be installed on 8 5/8" casing sufficient to handle subsurface pressures

IN ABOVE SPACE DESCRIBE PROPOSED PROGRAM: If proposal is to deepen or plug back, give data on present productive zone and proposed new productive zone. If proposal is to drill or deepen directionally, give pertinent data on subsurface locations and measured and true vertical depths. Give blowout preventer program, if any.

24.

SIGNED

TITLE Dist. Clerk

DATE Feb. 14-1966

(This space for Federal or State office use)

PERMIT NO.

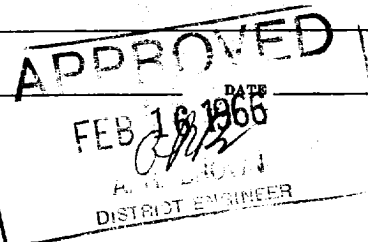
APPROVAL DATE

APPROVED BY

TITLE

CONDITIONS OF APPROVAL, IF ANY:

*See Instructions On Reverse Side



General Instructions: This form is to be used for the purpose of obtaining a Federal or a State agency, or both, pursuant to applicable Federal and/or State laws and regulations. Any necessary special instructions concerning the use of this form and the number of copies to be submitted, particularly with regard to local, area, or regional procedures and practices, either are shown below or will be issued by, or may be obtained from, the local Federal and/or State office.

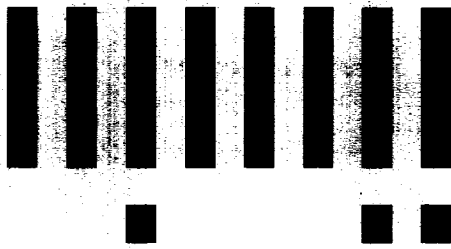
Item 1: If the proposal is to redrill to the same reservoir at a different subsurface location or to a new reservoir, use this form with appropriate notations. Consult applicable State or Federal regulations concerning subsequent work proposals or reports on the well.

Item 4: If there are no applicable State requirements, locations on Federal or Indian land should be described in accordance with Federal requirements. Consult local State or Federal office for specific instructions.

Item 14: Needed only when location of well cannot readily be found by road from the land or lease description. A plat, or plats, separate or on this reverse side, showing the roads to, and the surveyed location of, the well, and any other required information, should be furnished when required by Federal or State agency offices.

Items 15 and 18: If well is to be, or has been directionally drilled, give distances for subsurface location of hole in any present or objective production zone.

Item 22: Consult applicable Federal or State regulations, or appropriate officials, concerning approval of the proposal before operations are started.



LTR



Job separation sheet

NEW MEXICO OIL CONSERVATION COMMISSION
WELL LOCATION AND ACREAGE DEDICATION PLAT

Form C-102
Supersedes C-128
Effective 1-1-65

All distances must be from the outer boundary of the Section.

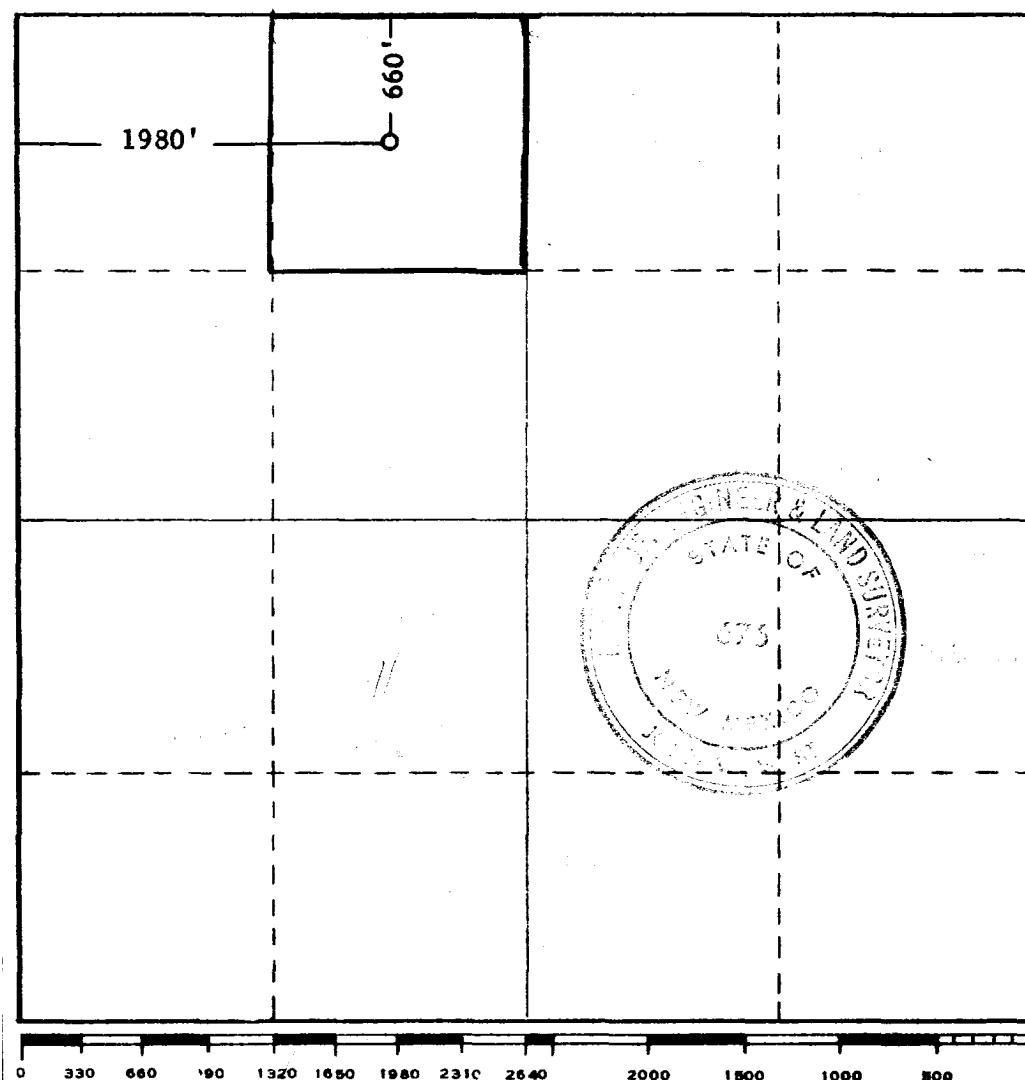
Operator MIDWEST OIL CORP.		Lease MORGAN FEDERAL TRACT 2		Well No. 5
Unit Letter C	Section 26	Township 7 SOUTH	Range 33 EAST	County ROOSEVELT
Actual Footage Location of Well: 660 feet from the NORTH line and 1980 feet from the WEST line				
Ground Level Elev. 4352.7	Producing Formation San Andres	Pool Chavez	Dedicated Acreage: 48 Acres	

1. Outline the acreage dedicated to the subject well by colored pencil or hachure marks on the plat below.
2. If more than one lease is dedicated to the well, outline each and identify the ownership thereof (both as to working interest and royalty).
3. If more than one lease of different ownership is dedicated to the well, have the interests of all owners been consolidated by communitization, unitization, force-pooling, etc?

☐ Yes ☐ No If answer is "yes," type of consolidation _____

If answer is "no," list the owners and tract descriptions which have actually been consolidated. (Use reverse side of this form if necessary.) _____

No allowable will be assigned to the well until all interests have been consolidated (by communitization, unitization, forced-pooling, or otherwise) or until a non-standard unit, eliminating such interests, has been approved by the Commission.



CERTIFICATION

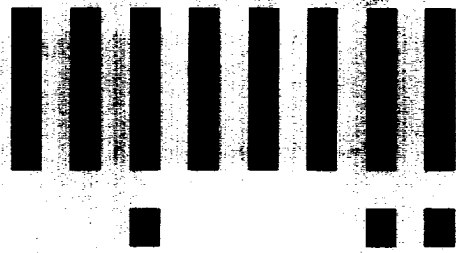
I hereby certify that the information contained herein is true and complete to the best of my knowledge and belief.

Name *H.E. Witterburg*
Position **District Clerk**
Company **Midwest Oil Corporation**
Date **February 13, 1966**

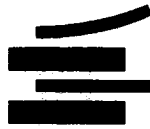
I hereby certify that the well location shown on this plat was plotted from field notes of actual surveys made by me or under my supervision, and that the same is true and correct to the best of my knowledge and belief.

Date Surveyed
FEB. 7, 1966
Registered Professional Engineer
and/or Land Surveyor

John W. West
Certificate No. **676**



LTR



Job separation sheet

COUNTY	ROOSEVELT		FIELD	Chaveroo	STATE	NM
OPR	MIDWEST OIL CORP.				MAP	
	5 Morgan-Federal Tract 2					
	Sec. 26, T-7-S, R-33-E				CO-ORD	
	660' FNL, 1980' FWL of Sec.				MX 10457	
	Spd 3-25-66					
	Cmp 4-9-66;		CLASS		EL	
	CSG & SX - TUBING	FORMATION	DATUM	FORMATION	DATUM	
	8 5/8" at 357' w/300 sx;					
	4 1/2" at 4427' w/300 sx.					
	LOGS EL GR RA IND HC A					
		TD 4427';				

IP(San Andres) Perf 4121-4257' F 312 BOPD. Pot based on 24 hr tes thru 22/64" chk, Gas Volume 41 MCFPD, Grav 26, CP 900#; TP 200#.

Distribution limited and publication prohibited by subscribers' agreement.
Reproduction rights reserved by Williams & Lee Scouting Service, Inc.

CONT.	PROP DEPTH	4500'	TYPE
DATE			

P.R. 2-24-66

PD 4500' - 3A

3-28-66 Drlg. 3300' anhy & gyp

4-4-66 TD 4427'; WO Comp Unit

4-11-66 TD 4427'; WO Potential

Perf @ 4121', 4131', 4140', 4148', 4171', 4186',
4200', 4206', 4213', 4226', 4231', 4257' W/1 SPI;
Acid (4121-4257') 2000 gals;

Pres (4121-4257') 20,000 gals oil + 20,000# sd;

Flwd 52 BNO in 4 hrs thru 22/64" chk, TP 200#;

CP 900#, Grav 26, Gas volume 41 MCFPD;

4-25-66 TD 4427'; COMPLETE

LOG TOPS: San Andres 3397', Slaughter 4066',

4-28-66 COMPLETION REPORTED