

NE (ICO OIL CONSERVATION COMMISSIC
WELL LOCATION AND ACREAGE DEDICATION PLAT

Form C-102
Supersedes C-128
Effective 1-1-65

All distances must be from the outer boundaries of the Section.

HOBBS OFFICE O. C. C.

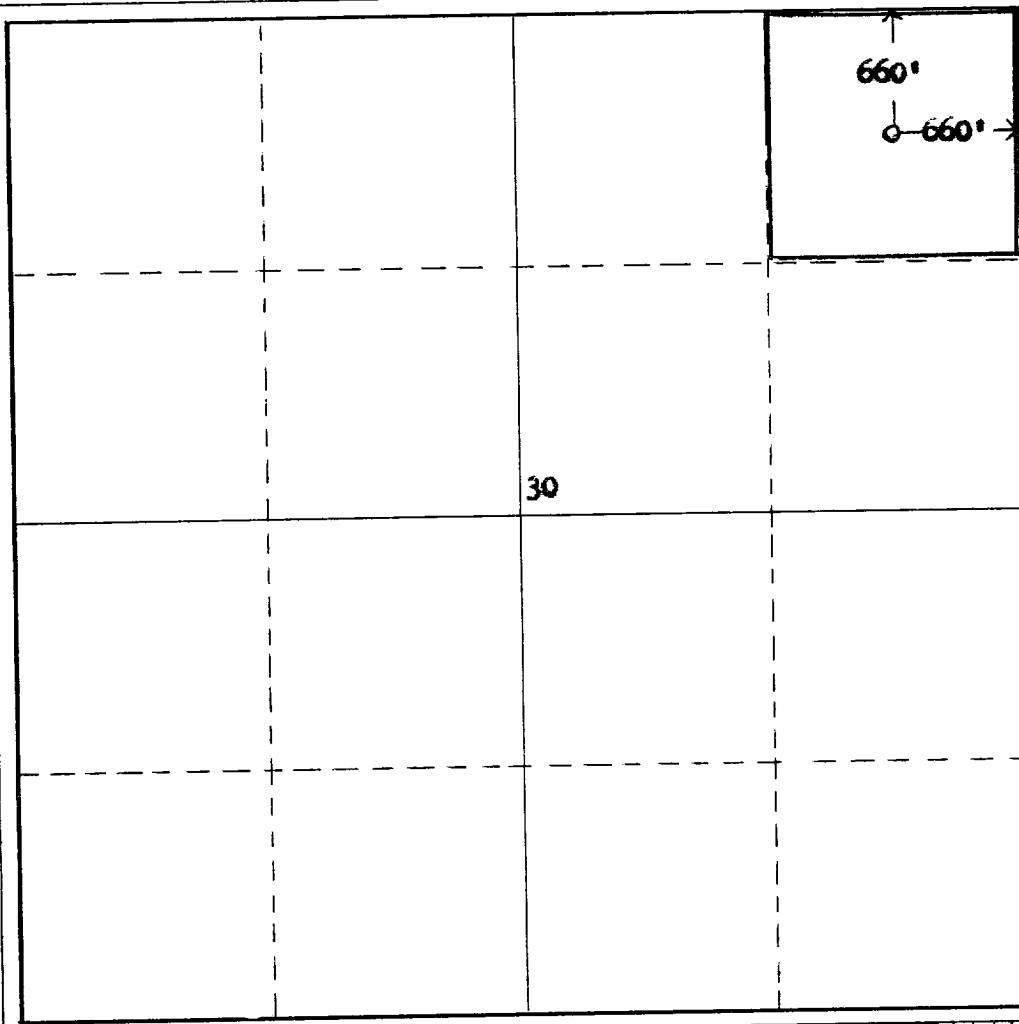
| | | | | |
|--|--|------------------------------|---------------------------------------|----------------------------|
| Operator Champlin Petroleum Company | | Lease Parrell-Federal | | Well No. 1 |
| Non-Operator: Warren American Oil Company | | | | |
| Unit Letter A | Section 30 | Township 7-S | Range 33-E | County Roosevelt |
| Actual Footage Location of Well: 660' feet from the North line and 660' feet from the East line | | | | |
| Ground Level Elev: Est. 4403' GR | Producing Formation San Andres | Pool Undesignated | Dedicated Acreage: 40 Acres | |

1. Outline the acreage dedicated to the subject well by colored pencil or hachure marks on the plat below.
2. If more than one lease is dedicated to the well, outline each and identify the ownership thereof (both as to working interest and royalty).
3. If more than one lease of different ownership is dedicated to the well, have the interests of all owners been consolidated by communitization, unitization, force-pooling, etc?

☐ Yes ☐ No If answer is "yes," type of consolidation _____

If answer is "no," list the owners and tract descriptions which have actually been consolidated. (Use reverse side of this form if necessary.) _____

No allowable will be assigned to the well until all interests have been consolidated (by communitization, unitization, forced-pooling, or otherwise) or until a non-standard unit, eliminating such interests, has been approved by the Commission.



CERTIFICATION

I hereby certify that the information contained herein is true and complete to the best of my knowledge and belief.

E. M. Brown
Name **E. M. Brown**
Position **District Superintendent**
Company **Champlin Petroleum Company**
Date **February 22, 1966**

I hereby certify that the well location shown on this plat was plotted from field notes of actual surveys made by me or under my supervision, and that the same is true and correct to the best of my knowledge and belief.

January 21, 1966

Date Surveyed

Registered Professional Engineer and/or Land Surveyor

Certificate No. **1069**