

NEW MEXICO OIL CONSERVATION COMMISSION
WELL LOCATION AND ACREAGE DEDICATION PLAT

Form C-102
Supersedes C-128
Effective 1-1-65

All distances must be from the outer boundaries of the section.

URBBS OFFICE 0.0.0.
FEB 11 27 AM '66

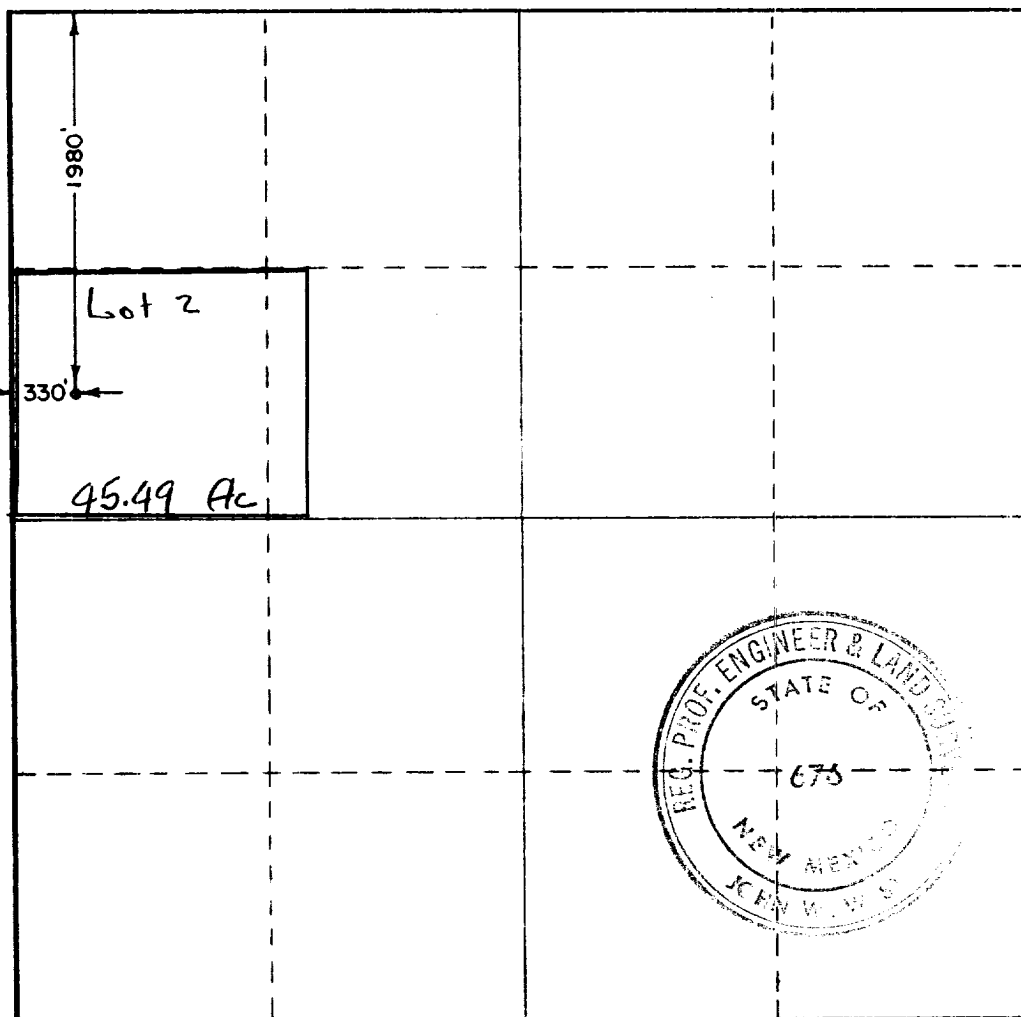
Operator DALPORT OIL CORP.		Lease HINKLE FEDERAL		Well No. 1
Unit Letter E/F	Section 19	Township 7 SOUTH	Range 34 EAST	County ROOSEVELT
Actual Footage Location of Well: 1980 feet from the NORTH line and 330 feet from the WEST line				
Ground Level Elev.	Producing Formation	Pool	Dedicated Acreage: Acres	

1. Outline the acreage dedicated to the subject well by colored pencil or hachure marks on the plat below.
2. If more than one lease is dedicated to the well, outline each and identify the ownership thereof (both as to working interest and royalty).
3. If more than one lease of different ownership is dedicated to the well, have the interests of all owners been consolidated by communitization, unitization, force-pooling, etc?

☐ Yes ☐ No If answer is "yes," type of consolidation _____

If answer is "no," list the owners and tract descriptions which have actually been consolidated. (Use reverse side of this form if necessary.) _____

No allowable will be assigned to the well until all interests have been consolidated (by communitization, unitization, forced-pooling, or otherwise) or until a non-standard unit, eliminating such interests, has been approved by the Commission.



CERTIFICATION

I hereby certify that the information contained herein is true and complete to the best of my knowledge and belief.

Name
W. L. T. Lang
Position
President
Company
DALPORT OIL CORPORATION
Date
February 14th, 1966

I hereby certify that the well location shown on this plat was plotted from field notes of actual surveys made by me or under my supervision, and that the same is true and correct to the best of my knowledge and belief.

Date Surveyed
FEBRUARY 14, 1966
Registered Professional Engineer and/or Land Surveyor

John W. West
Certificate No.

NM PE & LS NO. 676

0 330 660 990 1320 1650 1980 2310 2640 2000 1500 1000 500 0