

*** REVISION ***
NEW MEXICO OIL CONSERVATION COMMISSION
WELL LOCATION AND ACREAGE DEDICATION PLAT

Form C-102
Supersedes C-128
Effective 1-1-65

All distances must be from the outer boundaries of the Section.

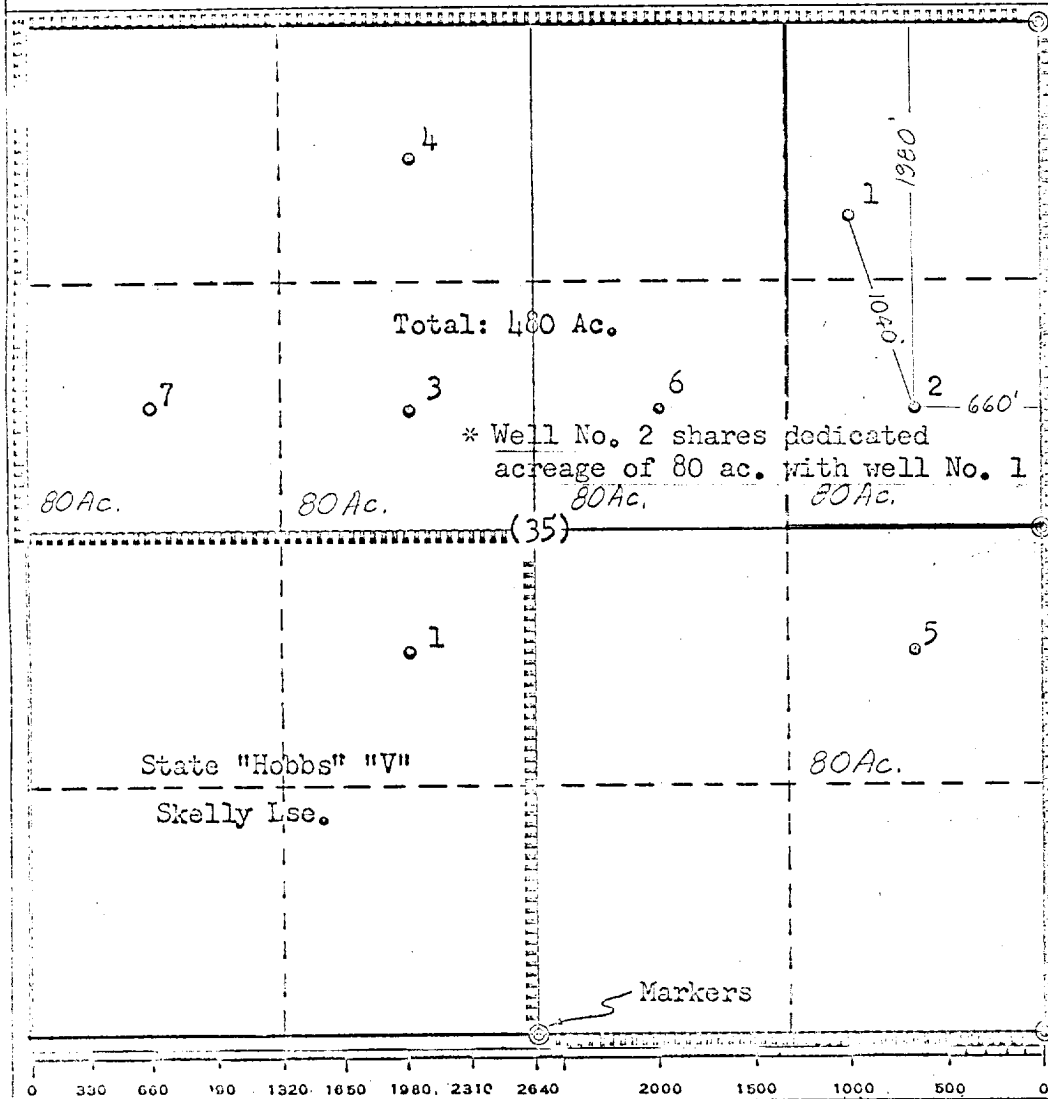
Operator TEXACO Inc.		Lease New Mexico "OT" State		Well No. 2
Unit Letter H	Section 35	Township 7 South	Range 35 East	County CL FM '67 Roosevelt
Actual Footage Location of Well: 1980 feet from the North line and 660 feet from the East line Sec. 35				
Ground Level Elev: 4167	Producing Formation San Andres	Pool Todd-Lower San Andres	Dedicated Acreage: 80 Acres	

1. Outline the acreage dedicated to the subject well by colored pencil or hachure marks on the plat below.
2. If more than one lease is dedicated to the well, outline each and identify the ownership thereof (both as to working interest and royalty).
3. If more than one lease of different ownership is dedicated to the well, have the interests of all owners been consolidated by communitization, unitization, force-pooling, etc?

☐ Yes ☐ No If answer is "yes," type of consolidation _____

If answer is "no," list the owners and tract descriptions which have actually been consolidated. (Use reverse side of this form if necessary.) _____

No allowable will be assigned to the well until all interests have been consolidated (by communitization, unitization, forced-pooling, or otherwise) or until a non-standard unit, eliminating such interests, has been approved by the Commission.



CERTIFICATION

I hereby certify that the information contained herein is true and complete to the best of my knowledge and belief.

T. G. Landwermer
Name

T. G. Landwermer

Position

Asst. Div. Civil Engineer

Company

TEXACO Inc.

Date

4/7/67

I hereby certify that the well location shown on this plat was plotted from field notes of actual surveys made by me or under my supervision, and that the same is true and correct to the best of my knowledge and belief.

Date Surveyed

1/16/66

Registered Professional Engineer and/or Land Surveyor

T. G. Landwermer
T. G. Landwermer

Certificate No.

17617

COUNTY	ROOSEVELT	FIELD	Todd	STATE	NM
OPR	TEXACO INC.				MAP
	2 State of New Mexico "CT"				
	Sec. 35, T-7-S, R-35-E				CO-ORD
	1980' FNL, 660' FEL of Sec.				MX 10472
		CLASS		EL	
	FORMATION	DATUM	FORMATION	DATUM	
CSG & SX - TUBING					
LOGS	EL	GR	RA	IND	HC A

Distribution limited and publication prohibited by subscribers' agreement.
Reproduction rights reserved by Williams & Lee Scouting Service, Inc.

CONT.	PROP DEPTH	4358'	TYPE
DATE			

F.R. 10-21-65
PD 4358' - SA
4-14-66 AMEND FOOTAGE: Formerly 1980' FNL, 990' FEL
of Sec.

COUNTY	ROOSEVELT		FIELD	Todd		STATE	NM	
OPR	TEXACO INC.				MAP			
2		State of New Mexico "OT"						
Sec. 35, T-7-S, R-35-E						CO-ORD		
1980' FNL, 660' FEL of Sec.						MX 10472		
Spd 4-22-66		CLASS		EL				
Cmp 5-4-66		FORMATION	DATUM	FORMATION	DATUM			
CSG & SX - TUBING								
7 5/8" 357' 200								
4 1/2" 4358' 500								
LOGS EL GR RA IND HC A		TD 4358'						

IP San Andres Perfs 4256-97' Flwd 220 BOPD. Pot. Based on 12 hr test of 110 B0 thru 32/64" chk., TP 100#, Gravity 24.8, GOR 27.

Distribution limited and publication prohibited by subscribers' agreement.
Reproduction rights reserved by Williams & Lee Scouting Service, Inc.

CONT.	Capitan Drlg. Co.	PROP DEPTH	4358'	TYPE
DATE				

F.R. 10-21-65
PD 4358' - SA
Contractor - Capitan Drlg. Co.
4-14-66 AMEND FOOTAGE: Formerly 1980' FNL, 990' FEL of Sec.
4-25-66 Drlg. 3056'.
5-2-66 Drlg. 4220'.
5-9-66 TD 4358', COMPLETED.
Perf @ 4256', 4260', 4268', 4277', 4287', 4297' W/2 SPI
Ac (4256-4297') 2500 gals; IR 3.2 BPM
(Holding for tops)
5-16-66 TD 4358', Completion Reported.
LOG TOPS: San Andres 3495', Slaughter 4000'.