

NUMBER OF COPIES RECEIVED	
DISTRIBUTION	
SANTA FE	
FILE	
LAND OFF	
TRANSPORTER	OIL GAS
PRODUCTION OFFICE	
OPERATOR	

NEW M CO OIL CONSERVATION COMM ION

Santa Fe, New Mexico O.C.C.
HOBBS HOBBS OFFICE O.C.C.

NOTICE OF INTENTION

Notice must be given to the District Office of the Oil Conservation Commission and approval obtained before drilling or recompletion begins. If changes in the proposed plan are considered advisable, a copy of this notice showing such changes will be returned to the sender. Submit this notice in QUINTUPPLICATE. One copy will be returned following approval. See additional instructions in Rules and Regulations of the Commission. If State Land submit 6 Copies. Attach Form C-128 in triplicate to first 3 copies of Form C-101.

Hobbs, New Mexico

3/14/66

(Place)

(Date)

OIL CONSERVATION COMMISSION
SANTA FE, NEW MEXICO

Gentlemen:

You are hereby notified that it is our intention to commence the Drilling of a well to be known as

The Wil-Mc Oil Corp.

(Company or Operator)

Baker

(Lease)

, Well No. **1**, in **E** (Unit) The well is

located **1980** feet from the **North** line and **660** feet from the

South West line of Section **9**, T **8S**, R **35E**, NMPM.

(GIVE LOCATION FROM SECTION LINE)

Wildcat Pool, **Roosevelt** County

D	C	B	A
E	F	G	H
L	K	J	I
M	N	O	P

If State Land the Oil and Gas Lease is No.

If patented land the owner is **Mr. Ray Baker**

Address **Portales, New Mexico**

We propose to drill well with drilling equipment as follows:

rotary tools

The status of plugging bond is **in effect**

Drilling Contractor **Verna Drilling Company**
Levelland, Texas

We intend to complete this well in the **Slaughter Zone of San Andres** formation at an approximate depth of **4300** feet.

CASING PROGRAM

We propose to use the following strings of Casing and to cement them as indicated:

Size of Hole	Size of Casing	Weight per Foot	New or Second Hand	Depth	Sacks Cement
12 1/4"	8 5/8"	20#	New	360	275
7 7/8"	4 1/2"	9.5#	New	4800	200

If changes in the above plans become advisable we will notify you immediately.

ADDITIONAL INFORMATION (If recompletion give full details of proposed plan of work.)

Approved _____, 19____
Except as follows:

Sincerely yours,

The Wil-Mc Oil Corp.

(Company or Operator)

By **Paul B. McCully**

Position **Executive Vice-President**

Send Communications regarding well to

Name **Paul B. McCully**

Address **1108 Fidelity Union Life Bldg. Dallas**

OIL CONSERVATION COMMISSION

By _____

NEW MEXICO OIL CONSERVATION COMMISSION
WELL LOCATION AND ACREAGE DEDICATION PLAT

Form C-102
Supersedes C-128
Effective 1-1-65

HOBBS OFFICE O. C. C. HOBBS OFFICE O. C. C.

All distances must be from the outer boundaries of the Section.

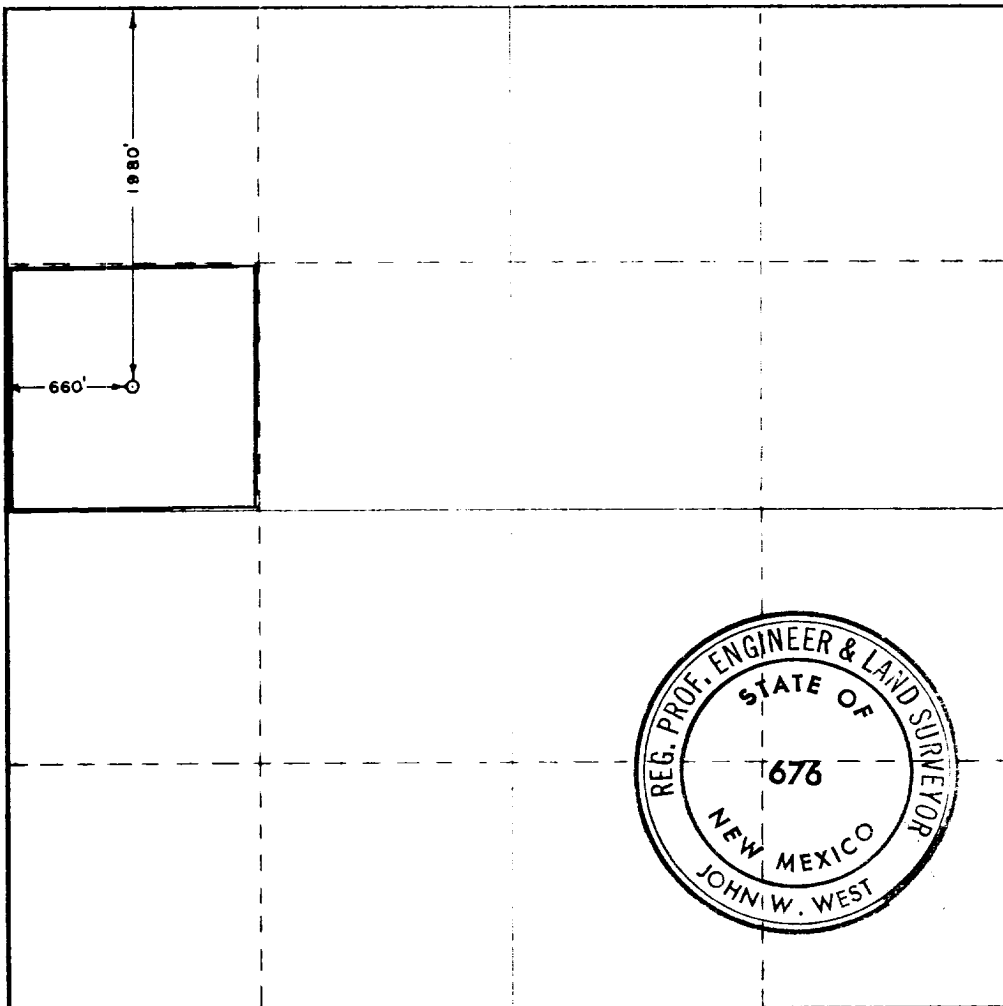
Operator WILL-MC OIL CORP.		Lease MAR 15 11 30 AM 1966		Plat No. 1	
Unit Letter E	Section 9	Township 8 SOUTH	Range 35 EAST	County ROOSEVELT	
Actual Footage Location of Well: 1980 feet from the NORTH line and 660 feet from the WEST line					
Ground Level Elev. 4221.5	Pro. Rating 1A	Foot WC	Dedicated Acreage: 40 Acres		

1. Outline the acreage dedicated to the subject well by colored pencil or hachure marks on the plat below.
2. If more than one lease is dedicated to the well, outline each and identify the ownership thereof (both as to working interest and royalty).
3. If more than one lease of different ownership is dedicated to the well, have the interests of all owners been consolidated by communitization, unitization, force-pooling, etc?

☐ Yes ☐ No If answer is "yes," type of consolidation _____

If answer is "no," list the owners and tract descriptions which have actually been consolidated. (Use reverse side of this form if necessary.) _____

No allowable will be assigned to the well until all interests have been consolidated (by communitization, unitization, forced-pooling, or otherwise) or until a non-standard unit, eliminating such interests, has been approved by the Commission.



CERTIFICATION

I hereby certify that the information contained herein is true and complete to the best of my knowledge and belief.

Paul B. McCully
Name

Paul B. McCully

Position

Executive Vice President

Company

The Will-Mc Oil Corp.

Date

3-14-66

I hereby certify that the well location shown on this plat was plotted from field notes of actual surveys made by me or under my supervision, and that the same is true and correct to the best of my knowledge and belief.

Date Surveyed **MARCH 9, 1966**

Registered Professional Engineer and/or Land Surveyor

John W. West
Certificate No.

N.M. P.E. & L.S. 676

0 330 660 990 1320 1650 1980 2310 2640 2000 1500 1000 500 0