

NE EXICO OIL CONSERVATION COMMISSIC
WELL LOCATION AND ACREAGE DEDICATION PLAT

Form C-128
Superseded by C-128
Effective 1-1-65

All distances must be from the outer boundaries of the section.
HOBBS OFFICE O.C.C.

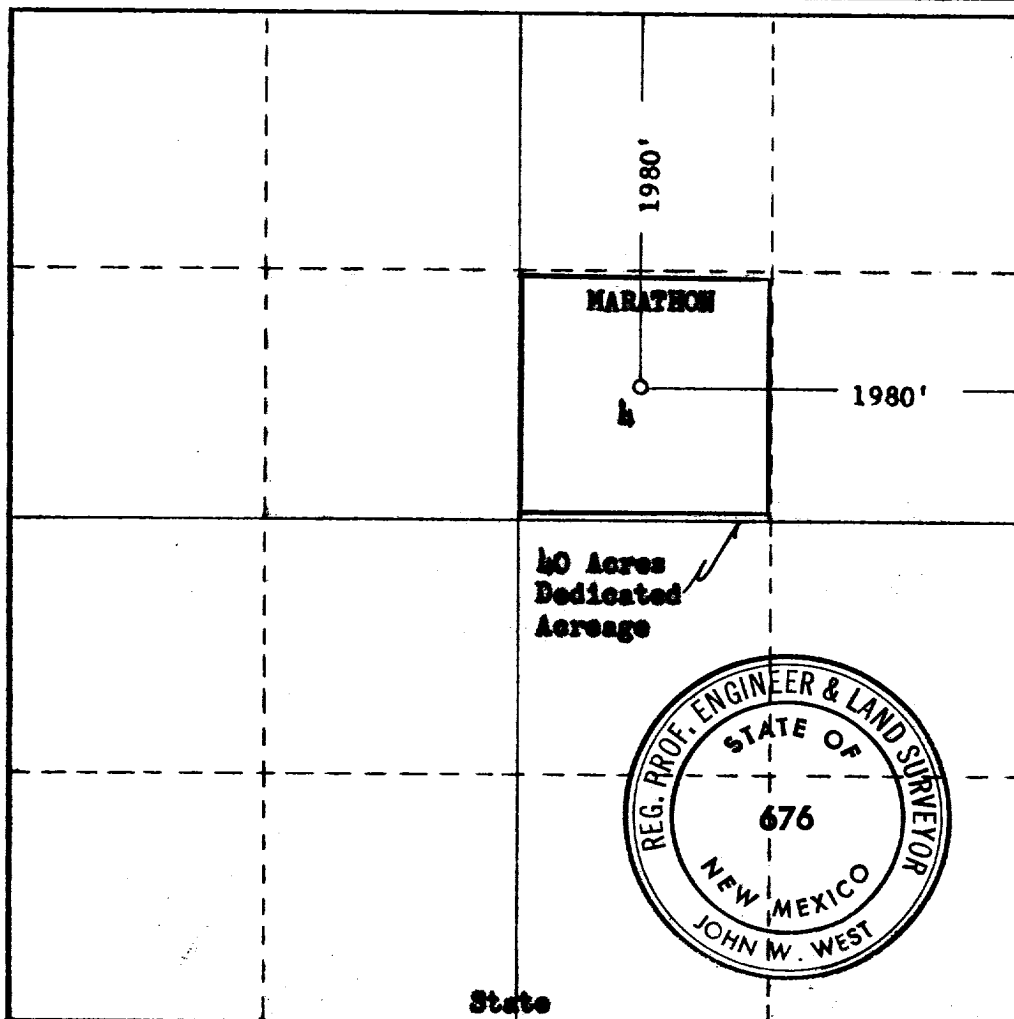
Operator MARATHON OIL COMPANY			Lease SECTION 35 STATE		Well No. 4
Unit Letter G	Section 35	Township 7 SOUTH	Range 33 EAST	County ROOSEVELT	
Actual Footage Location of Well: 1980 feet from the NORTH line and 1980 feet from the EAST line					
Ground Level Elev.	Producing Formation SAN ANDRES PROSPECT	Pool UNDESIGNATED	Dedicated Acreage: 40 Acres		

1. Outline the acreage dedicated to the subject well by colored pencil or hachure marks on the plat below.
2. If more than one lease is dedicated to the well, outline each and identify the ownership thereof (both as to working interest and royalty).
3. If more than one lease of different ownership is dedicated to the well, have the interests of all owners been consolidated by communitization, unitization, force-pooling, etc?

☐ Yes ☐ No If answer is "yes," type of consolidation _____

If answer is "no," list the owners and tract descriptions which have actually been consolidated. (Use reverse side of this form if necessary.) _____

No allowable will be assigned to the well until all interests have been consolidated (by communitization, unitization, forced-pooling, or otherwise) or until a non-standard unit, eliminating such interests, has been approved by the Commission.



CERTIFICATION

I hereby certify that the information contained herein is true and complete to the best of my knowledge and belief.

Name
J. R. Barber
Position
Area Petroleum Engineer
Company
Marathon Oil Company
Date
3-9-66

I hereby certify that the well location shown on this plat was plotted from field notes of actual surveys made by me or under my supervision, and that the same is true and correct to the best of my knowledge and belief.

Date Surveyed
MARCH 4, 1966

Registered Professional Engineer and/or Land Surveyor

John W. West
Certificate No.

676

0 320 640 960 1280 1600 1920 2240 2560 2880 3200 3520 3600

RECEIVED

MAR 7 1966

MARATHON OIL CO.
Area Operations Office
Hobbs, New Mexico