

(May 1966)

(Only if filled in reverse side)

UNITED STATES  
DEPARTMENT OF THE INTERIOR  
GEOLOGICAL SURVEY  
WOBBS OFFICE O.C.C.

APPLICATION FOR PERMIT TO DRILL, DEEPEN OR PLUG BACK

1a. TYPE OF WORK

DRILL ☒DEEPEN ☐PLUG BACK ☐

b. TYPE OF WELL

OIL  
WELL ☒GAS  
WELL ☐OTHER ☐SINGLE  
ZONE ☒MULTIPLE  
ZONE ☐

2. NAME OF OPERATOR

Kern County Land Company

3. ADDRESS OF OPERATOR

418 First State Bank Bldg. Midland, Texas 79701

4. LOCATION OF WELL (Report location clearly and in accordance with any State requirements.)\*

At surface

1980' FWL &amp; FSL Sec. 24 (Unit K, NE/4 SW/4)

At proposed prod. zone

14. DISTANCE IN MILES AND DIRECTION FROM NEAREST TOWN OR POST OFFICE\*

Approx 16 miles N&amp;W of Milnesand, N.M.

15. DISTANCE FROM PROPOSED\*

LOCATION TO NEAREST  
PROPERTY OR LEASE LINE, FT.  
(Also to nearest drlg. unit line, if any)

16. NO. OF ACRES IN LEASE

520

17. NO. OF ACRES ASSIGNED  
TO THIS WELL

40

18. DISTANCE FROM PROPOSED LOCATION\*  
TO NEAREST WELL, DRILLING, COMPLETED,  
OR APPLIED FOR, ON THIS LEASE, FT.

19. PROPOSED DEPTH

4500

20. ROTARY OR CABLE TOOLS

rotary

21. ELEVATIONS (Show whether DF, RT, GR, etc.)

to be furnished later

22. APPROX. DATE WORK WILL START\*

April 1966

23.

PROPOSED CASING AND CEMENTING PROGRAM

SIZE OF HOLE	SIZE OF CASING	WEIGHT PER FOOT	SETTING DEPTH	QUANTITY OF CEMENT
11-12 1/4"	8 5/8"	24	430'	Circulate
7 7/8"	4 1/2"	9.5	4500	Fill 600' above pay.

Drill well to total depth. Run logs and evaluate well. Run and cement casing. Perforate and stimulate well as necessary for commercial production.

IN ABOVE SPACE DESCRIBE PROPOSED PROGRAM: If proposal is to deepen or plug back, give data on present productive zone and proposed new productive zone. If proposal is to drill or deepen directionally, give pertinent data on subsurface locations and measured and true vertical depths. Give blowout preventer program, if any.

24.

SIGNED

*C. J. Egan*

TITLE District Engineer

DATE 3-31-66

(This space for Federal or State office use)

PERMIT NO. \_\_\_\_\_

APPROVAL DATE \_\_\_\_\_

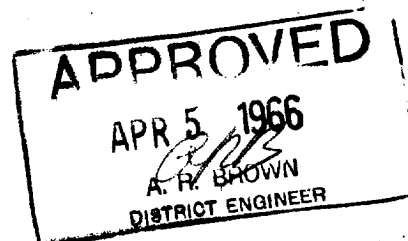
APPROVED BY \_\_\_\_\_

TITLE \_\_\_\_\_

DATE \_\_\_\_\_

CONDITIONS OF APPROVAL, IF ANY:

\*See Instructions On Reverse Side



**NEW MEXICO OIL CONSERVATION COMMISSION  
WELL LOCATION AND ACREAGE DEDICATION PLAT**

Form C-102  
Supersedes C-128  
Effective 1-1-65

All distances must be from the outer boundary of the section.  
OILS OFFICE, O. C. C.

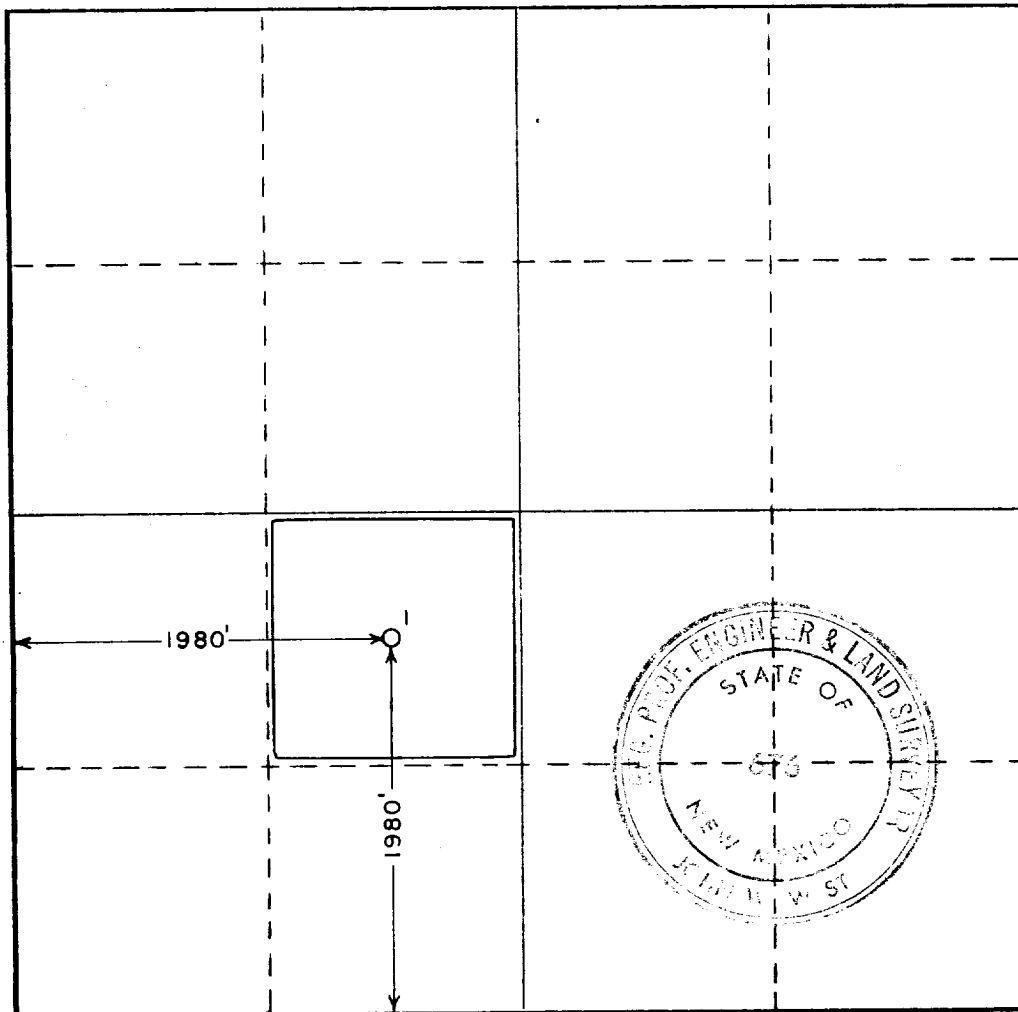
Operator <b>KEEN COUNTY LAND CO.</b>			Lease <b>FEAR 12 24 32 AM '66</b>		Well No. <b>1</b>
Unit Letter <b>K</b>	Section <b>24</b>	Township <b>7 SOUTH</b>	Range <b>33 EAST</b>	County <b>ROOSEVELT</b>	
Actual Footage Location of Well: <b>1930</b> feet from the <b>SOUTH</b> line and <b>1980</b> feet from the <b>WEST</b> line					
Ground Level Elev.	Producing Formation <b>SAN ANDRES</b>		Pool <b>CHIAVERO - SAN ANDRES</b>		Dedicated Acreage: <b>40-NW 1/4 OF SW 1/4 Acres</b>

1. Outline the acreage dedicated to the subject well by colored pencil or hachure marks on the plat below.
2. If more than one lease is dedicated to the well, outline each and identify the ownership thereof (both as to working interest and royalty).
3. If more than one lease of different ownership is dedicated to the well, have the interests of all owners been consolidated by communitization, unitization, force-pooling, etc?

☐ Yes    ☐ No    If answer is "yes," type of consolidation       

If answer is "no," list the owners and tract descriptions which have actually been consolidated. (Use reverse side of this form if necessary.)       

No allowable will be assigned to the well until all interests have been consolidated (by communitization, unitization, forced-pooling, or otherwise) or until a non-standard unit, eliminating such interests, has been approved by the Commission.



**CERTIFICATION**

I hereby certify that the information contained herein is true and complete to the best of my knowledge and belief.

Name Ronald W. Francis  
Position Dist. Prod. Supt.  
Company Keen County Land Co.  
Date 4-1-66

I hereby certify that the well location shown on this plat was plotted from field notes of actual surveys made by me or under my supervision, and that the same is true and correct to the best of my knowledge and belief.

Date Surveyed APRIL 1, 1966  
Registered Professional Engineer and/or Land Surveyor

John W. West  
Certificate No.