

UNITED STATES
DEPARTMENT OF THE INTERIOR
GEOLOGICAL SURVEY

APPLICATION FOR PERMIT TO DRILL, DEEPEN, OR PLUG BACK

1a. TYPE OF WORK
DRILL ☒ DEEPEN ☐ PLUG BACK ☐

b. TYPE OF WELL
OIL WELL ☒ GAS WELL ☐ OTHER ☐ SINGLE ZONE ☒ MULTIPLE ZONE ☐

2. NAME OF OPERATOR
Kern County Land Company

3. ADDRESS OF OPERATOR
418 First State Bank Bldg. Midland, Texas 79701

4. LOCATION OF WELL (Report location clearly and in accordance with any State requirements.)*
At surface
660' FSL & 1980' FEL Sec. 21 (Unit 0, SW/4 SE/4)
At proposed prod. zone

14. DISTANCE IN MILES AND DIRECTION FROM NEAREST TOWN OR POST OFFICE*
Approx 16 miles N&W of Milnesand, New Mexico

15. DISTANCE FROM PROPOSED*
LOCATION TO NEAREST
PROPERTY OR LEASE LINE, FT.
(Also to nearest drlg. unit line, if any)

16. NO. OF ACRES IN LEASE
280

18. DISTANCE FROM PROPOSED LOCATION*
TO NEAREST WELL, DRILLING, COMPLETED,
OR APPLIED FOR, ON THIS LEASE, FT.

19. PROPOSED DEPTH
4500

17. NO. OF ACRES ASSIGNED
TO THIS WELL
40

20. ROTARY OR CABLE TOOLS
rotary

21. ELEVATIONS (Show whether DF, RT, GR, etc.)
to be furnished later

22. APPROX. DATE WORK WILL START*
April 1966

23. PROPOSED CASING AND CEMENTING PROGRAM

SIZE OF HOLE	SIZE OF CASING	WEIGHT PER FOOT	SETTING DEPTH	QUANTITY OF CEMENT
11-12 1/4"	8 5/8"	24	430	Circulate
7 7/8"	4 1/2"	9.5	4500	Fill 600' above pay.

Drill well to total depth. Run logs and evaluate well. Run and cement casing. Perforate and stimulate well as necessary for commercial production.

IN ABOVE SPACE DESCRIBE PROPOSED PROGRAM: If proposal is to deepen or plug back, give data on present productive zone and proposed new productive zone. If proposal is to drill or deepen directionally, give pertinent data on subsurface locations and measured and true vertical depths. Give blowout preventer program, if any.

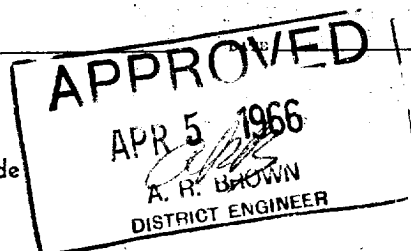
24. SIGNED E. F. Eaton TITLE District Engineer DATE 3-31-66

(This space for Federal or State office use)

PERMIT NO. _____ APPROVAL DATE _____

APPROVED BY _____ TITLE _____
CONDITIONS OF APPROVAL, IF ANY:

*See Instructions On Reverse Side



**NEW MEXICO OIL CONSERVATION COMMISSION
WELL LOCATION AND ACREAGE DEDICATION PLAT**

Form C-102,
Supersedes C-128
Effective 1-1-65

All distances must be from the outer boundaries of the Section.

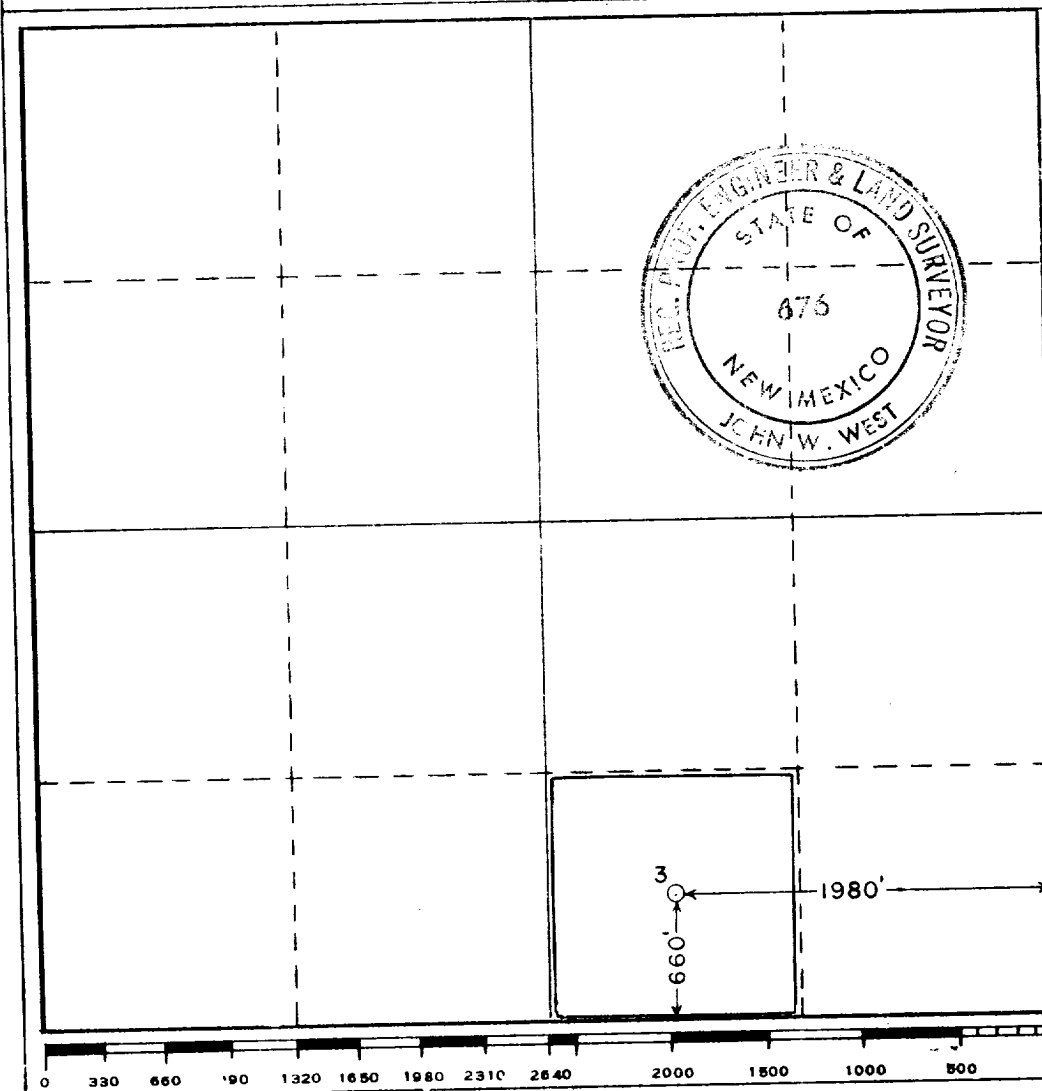
Operator KERN COUNTY LAND CO.			Lease FEDERAL 21		Well No. 3
Unit Letter O	Section 21	Township 7 SOUTH	Range 33 EAST	County ROOSEVELT	
Actual Footage Location of Well: 660 feet from the SOUTH line and 1980 feet from the EAST line					
Ground Level Elev.	Producing Formation SAN ANDRES		Pool CHAVEROO - SAN ANDRES		Dedicated Acreage: 40-SW 1/4 OF SE 1/4 Acres

1. Outline the acreage dedicated to the subject well by colored pencil or hachure marks on the plat below.
2. If more than one lease is dedicated to the well, outline each and identify the ownership thereof (both as to working interest and royalty).
3. If more than one lease of different ownership is dedicated to the well, have the interests of all owners been consolidated by communitization, unitization, force-pooling, etc? _____

☐ Yes ☐ No If answer is "yes," type of consolidation: _____

If answer is "no," list the owners and tract descriptions which have actually been consolidated. (Use reverse side of this form if necessary.) _____

No allowable will be assigned to the well until all interests have been consolidated (by communitization, unitization, forced-pooling, or otherwise) or until a non-standard unit, eliminating such interests, has been approved by the Commission.



CERTIFICATION

I hereby certify that the information contained herein is true and complete to the best of my knowledge and belief.

Name: Ronald D. Gagnier
 Position: Dist. Prod. Supt.
 Company: Kern County Land Co.
 Date: 4-1-66

I hereby certify that the well location shown on this plat was plotted from field notes of actual surveys made by me or under my supervision, and that the same is true and correct to the best of my knowledge and belief.

Date Surveyed
APRIL 1, 1966

Registered Professional Engineer and/or Land Surveyor

John W. West

Certificate No.

676