

UNITED STATES  
DEPARTMENT OF THE INTERIOR  
GEOLOGICAL SURVEY

(Other side)  
Reverse side)

APPLICATION FOR PERMIT TO DRILL, DEEPEN, OR PLUG BACK

1a. TYPE OF WORK

DRILL ☒

DEEPEN ☐

PLUG BACK ☐

b. TYPE OF WELL

OIL  
WELL ☒

GAS  
WELL ☐

OTHER

SINGLE  
ZONE ☒

MULTIPLE  
ZONE ☐

2. NAME OF OPERATOR

Kern County Land Company

3. ADDRESS OF OPERATOR

418 First State Bank Bldg, Midland, Texas

4. LOCATION OF WELL (Report location clearly and in accordance with any State requirements.\*)

At surface

660' FWL & 660' FSL, Sec. 23 (Unit M SW/4 SW/4)

At proposed prod. zone

14. DISTANCE IN MILES AND DIRECTION FROM NEAREST TOWN OR POST OFFICE\*

Approx. 16 miles N&W of Milnesand, N.M.

15. DISTANCE FROM PROPOSED\*

LOCATION TO NEAREST  
PROPERTY OR LEASE LINE, FT.  
(Also to nearest drlg. unit line, if any)

18. DISTANCE FROM PROPOSED LOCATION\*  
TO NEAREST WELL, DRILLING, COMPLETED,  
OR APPLIED FOR, ON THIS LEASE, FT.

16. NO. OF ACRES IN LEASE

2160

19. PROPOSED DEPTH

4500

17. NO. OF ACRES ASSIGNED  
TO THIS WELL

40

20. ROTARY OR CABLE TOOLS

Rotary

21. ELEVATIONS (Show whether DF, RT, GR, etc.)

To be furnished later.

22. APPROX. DATE WORK WILL START\*

April, 1966

PROPOSED CASING AND CEMENTING PROGRAM

SIZE OF HOLE	SIZE OF CASING	WEIGHT PER FOOT	SETTING DEPTH	QUANTITY OF CEMENT
11-12 1/4"	8 5/8"	24	430	Circulate
7 7/8"	4 1/2"	9.5	4500	Fill 600' above pay.

Drill well to total depth. Run logs and evaluate well. Run and cement casing.  
Perforate and stimulate well as necessary for commercial production.

18. ABOVE SPACE DESCRIBE PROPOSED PROGRAM: If proposal is to deepen or plug back, give data on present productive zone and proposed new productive zone. If proposal is to drill or deepen directionally, give pertinent data on subsurface locations and measured and true vertical depths. Give blowout prevention program, if any.

SIGNED

*A. R. Brown*

TITLE

District Engineer

DATE

3-31-66

(This space for Federal or State office use)

PERMIT NO.

APPROVAL DATE

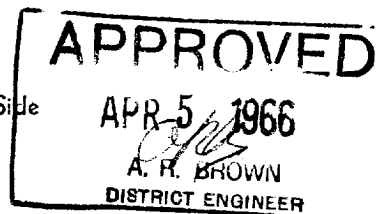
APPROVED BY

TITLE

DATE

COMMENTS (If any)

\*See Instructions On Reverse Side



**NEW MEXICO OIL CONSERVATION COMMISSION  
WELL LOCATION AND ACREAGE DEDICATION FORM**

Form O-105  
Supersedes O-228  
Effective 1-1-65

All distances must be from the outer boundaries of the Section.

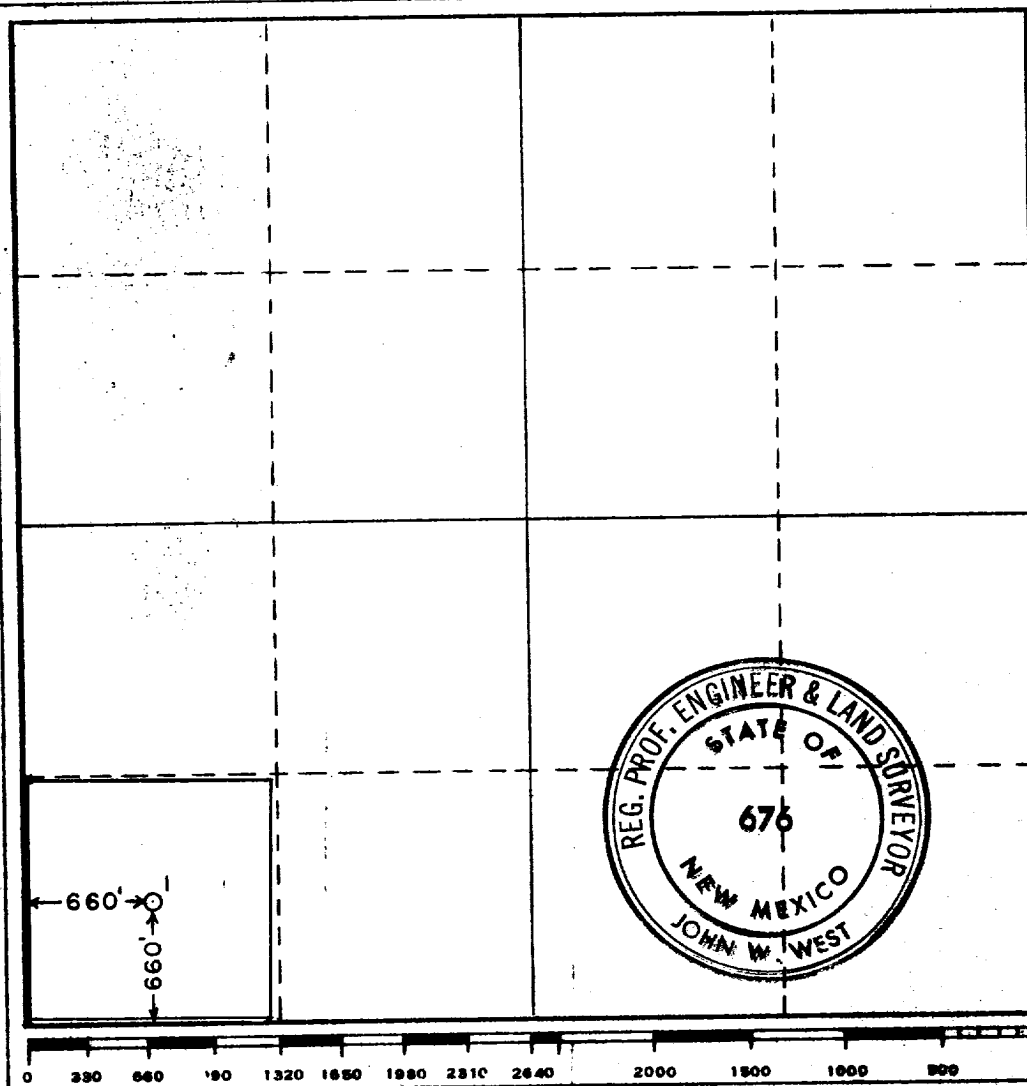
Operator <b>KERN COUNTY LAND CO.</b>			Lease <b>FEDERAL</b>		Well No. <b>1</b>
Unit Letter <b>M</b>	Section <b>23</b>	Township <b>7 SOUTH</b>	Range <b>33 EAST</b>	County <b>ROOSEVELT</b>	
Actual Footage Location of Well: <b>660</b> feet from the <b>SOUTH</b> line and <b>660</b> feet from the <b>WEST</b> line					
Ground Level Elev.	Producing Formation <b>SAN ANDRES</b>		Pool <b>CHAVEROO - SAN ANDRES</b>		Dedicated Acreage: <b>40-SW<math>\frac{1}{4}</math> OF SW<math>\frac{1}{4}</math></b> Acres

1. Outline the acreage dedicated to the subject well by colored pencil or hatchure marks on the plat below.
2. If more than one lease is dedicated to the well, outline each and identify the ownership thereof (both as to working interest and royalty).
3. If more than one lease of different ownership is dedicated to the well, have the interests of all owners been consolidated by communitization, unitization, force-pooling, etc? \_\_\_\_\_

☐ Yes    ☐ No    If answer is "yes," type of consolidation \_\_\_\_\_

If answer is "no," list the owners and tract descriptions which have actually been consolidated. (Use reverse side of this form if necessary.) \_\_\_\_\_

No allowable will be assigned to the well until all interests have been consolidated (by communitization, unitization, forced-pooling, or otherwise) or until a non-standard unit, eliminating such interests, has been approved by the Commission.



**CERTIFICATION**

I hereby certify that the information contained herein is true and complete to the best of my knowledge and belief.

Name Ronald W. Yancy  
 Position Dist. Prod. Supt.  
 Company Kern County Land Co.  
 Date 4-1-66

I hereby certify that the well location shown on this plat was plotted from field notes of actual surveys made by me or under my supervision, and that the same is true and correct to the best of my knowledge and belief.

Date Surveyed MARCH 31, 1966

Registered Professional Engineer and/or Land Surveyor

John W. West  
 Certificate No. NM PE 615 676