

NEW MEXICO OIL CONSERVATION COMMISSION
 WELL LOCATION AND ACREAGE DEDICATION PLAT
 HOBBS OFFICE O. C. C.

Form C-102
 Supersedes C-128
 Effective 1-1-65

All distances must be from the outer boundaries of the Section.

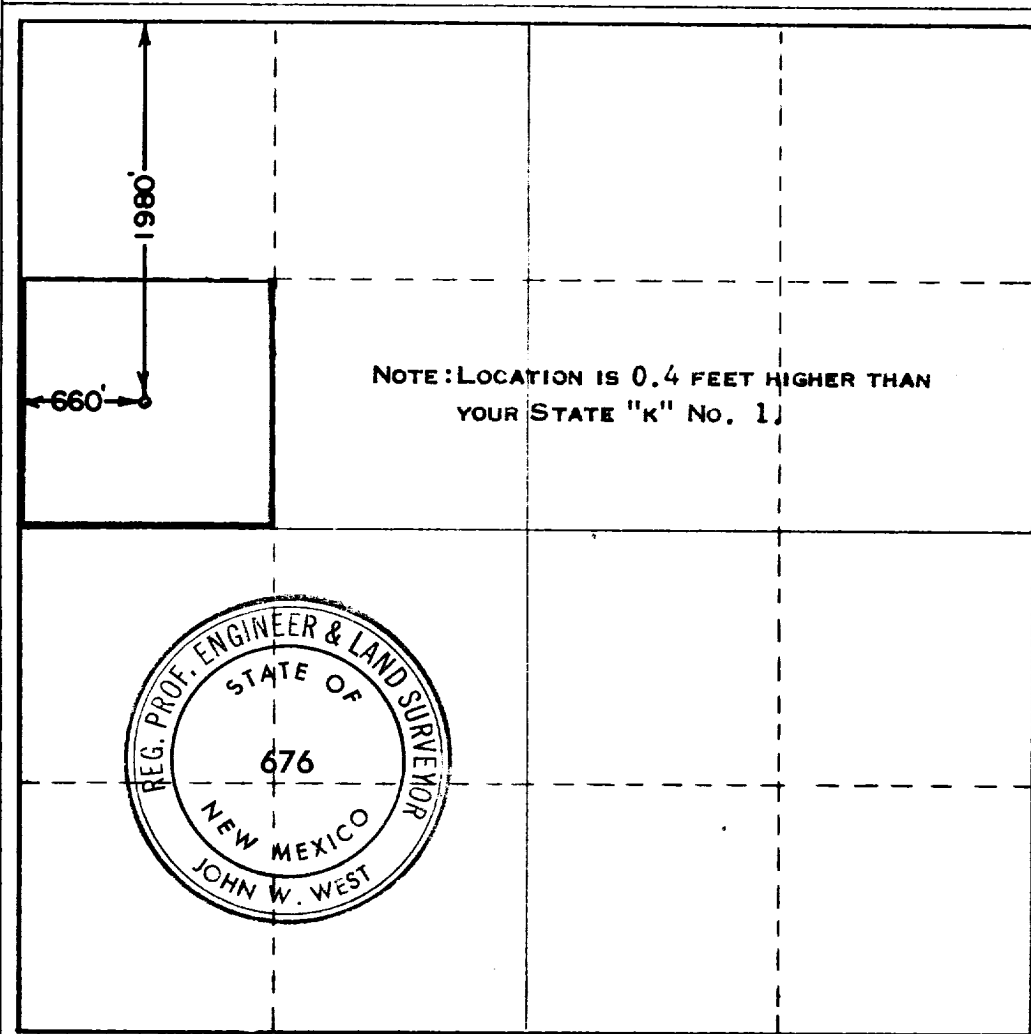
Operator SOUTHERN PETROLEUM EXPLORATION, INC.		Lease MAY 9 7 28 AM '66		Well No. 2	
Unit Letter E		Section 36		Township 7 SOUTH	
Range 33 EAST		County ROOSEVELT			
Actual Footage Location of Well: 1980 feet from the NORTH line and 660 feet from the WEST line					
Ground Level Elev. 4331		Producing Formation SAN ANDRES		Pool UNDERSIGNATED	
				Dedicated Acreage: 40 Acres	

1. Outline the acreage dedicated to the subject well by colored pencil or hachure marks on the plat below.
2. If more than one lease is dedicated to the well, outline each and identify the ownership thereof (both as to working interest and royalty).
3. If more than one lease of different ownership is dedicated to the well, have the interests of all owners been consolidated by communitization, unitization, force-pooling, etc?

Yes No If answer is "yes," type of consolidation _____

If answer is "no," list the owners and tract descriptions which have actually been consolidated. (Use reverse side of this form if necessary.) _____

No allowable will be assigned to the well until all interests have been consolidated (by communitization, unitization, forced-pooling, or otherwise) or until a non-standard unit, eliminating such interests, has been approved by the Commission.



CERTIFICATION

I hereby certify that the information contained herein is true and complete to the best of my knowledge and belief.

B. C. Hicks
 Name
B. C. Hicks
 Position
Dist. Land Manager
 Company
Southern Petroleum Exploration, Inc.
 Date
5-7-66

I hereby certify that the well location shown on this plat was plotted from field notes of actual surveys made by me or under my supervision, and that the same is true and correct to the best of my knowledge and belief.

Date Surveyed
MAY 5, 1966
 Registered Professional Engineer and/or Land Surveyor
John W. West
 Certificate No.
NM PE & LS No. 676

