

NEW MEXICO OIL AND GAS COMMISSION
WELL LOCATION AND DEDICATION PLAT

Form C-102
Supersedes C-128
Effective 1-1-65

ALL DISTANCES MUST BE FROM THE CORNER BOUNDARIES OF THE SECTION.

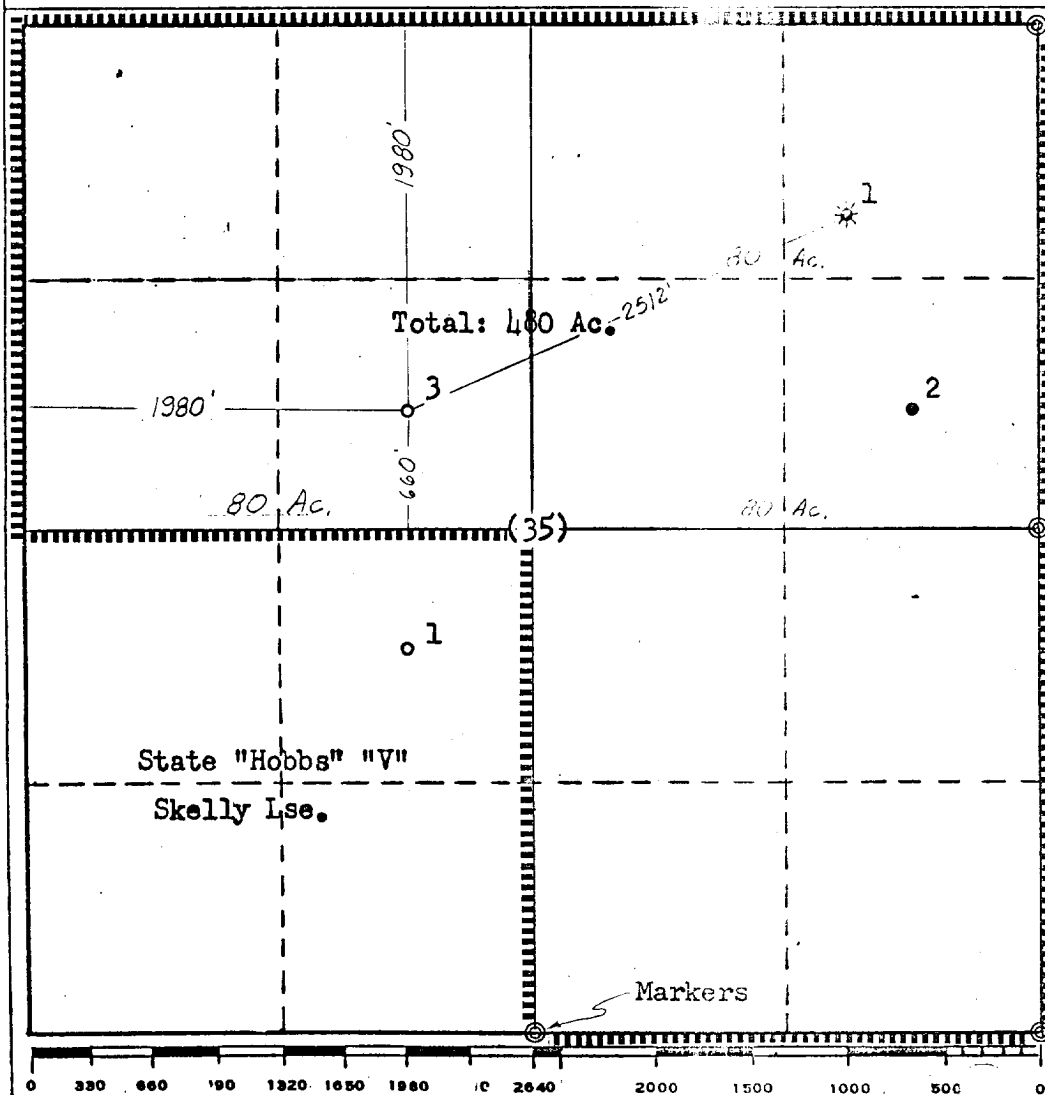
Operator TEXACO Inc.		Date JUN 3 11 20 AM '66		Well No. 3
Unit Letter F	Section 35	Township 7 South	Range 35 East	County Roosevelt
Actual Footage Location of Well: 1980' feet from the North line and 1980 feet from the West line Sec. 35				
Ground Level Elev: 4178'	Producing Formation San Andres	Dedicated Acreage: Todd San Andres		80 Acres

1. Outline the acreage dedicated to the subject well by colored pencil or hachure marks on the plat below.
2. If more than one lease is dedicated to the well, outline each and identify the ownership thereof (both as to working interest and royalty).
3. If more than one lease of different ownership is dedicated to the well, have the interests of all owners been consolidated by communitization, unitization, force-pooling, etc?

☐ Yes ☐ No If answer is "yes," type of consolidation _____

If answer is "no," list the owners and tract descriptions which have actually been consolidated. (Use reverse side of this form if necessary.) _____

No allowable will be assigned to the well until all _____ have been consolidated (by communitization, unitization, forced-pooling, or otherwise) or until a non-standard _____ eliminating such interests, has been approved by the Commission.



CERTIFICATION	
I hereby certify that the information contained herein is true and complete to the best of my knowledge and belief.	
Name	J. J. Velten
Position	Division Civil Engineer
Company	TEXACO Inc.
Date	6/2/66
I hereby certify that the well location shown on this plat was plotted from field notes of actual surveys made by me or under my supervision, and that the same is true and correct to the best of my knowledge and belief.	
Date Surveyed	6/1/66
Registered Professional Engineer and/or Land Surveyor	J. J. Velten
Certificate No.	8174