

UNITED STATES  
DEPARTMENT OF THE INTERIOR  
GEOLOGICAL SURVEY

## APPLICATION FOR PERMIT TO DRILL, DEEPEN, OR PLUG BACK

## 1a. TYPE OF WORK

DRILL ☒DEEPEN ☐PLUG BACK ☐

## b. TYPE OF WELL

OIL  
WELL ☒GAS  
WELL ☐OTHER ☐SINGLE  
ZONE ☐MULTIPLE  
ZONE ☐

## 2. NAME OF OPERATOR

Artec Oil &amp; Gas Company

## 3. ADDRESS OF OPERATOR

P. O. Box 837, Hobbs, New Mexico

## 4. LOCATION OF WELL (Report location clearly and in accordance with any State requirements.)\*

At surface

1980/W Line and 1980/E Line, Section 24-7B-37E

At proposed prod. zone

San Andres-Glorieta

## 14. DISTANCE IN MILES AND DIRECTION FROM NEAREST TOWN OR POST OFFICE\*

Five miles NE Alhitt

15. DISTANCE FROM PROPOSED\* LOCATION TO NEAREST PROPERTY OR LEASE LINE, FT.  
(Also to nearest drg. unit line, if any)

660/North nearest

lease line.

## 16. NO. OF ACRES IN LEASE

200

## 17. NO. OF ACRES ASSIGNED TO THIS WELL

40

## 18. DISTANCE FROM PROPOSED LOCATION\* TO NEAREST WELL, DRILLING, COMPLETED, OR APPLIED FOR, ON THIS LEASE, FT.

## 19. PROPOSED DEPTH

5200'

## 20. ROTARY OR CABLE TOOLS

Rotary

## 21. ELEVATIONS (Show whether DF, RT, GR, etc.)

## 22. APPROX. DATE WORK WILL START\*

June 21, 1966

## 23.

## PROPOSED CASING AND CEMENTING PROGRAM

SIZE OF HOLE	SIZE OF CASING	WEIGHT PER FOOT	SETTING DEPTH	QUANTITY OF CEMENT
10-1/4"	8-5/8"	24#	350	200 Class A
7-7/8"	4-1/2"	9.5#	5100	200 Class A

1. Drill 10-1/4" hole to 350'.
2. Set 8-5/8" casing at 350' in Red beds with 200 sacks cement and circulate to surface.
3. Drill 7-7/8" hole to 5200'.
4. Drill stem test at 4200-4400' interval in Slaughter zone of San Andres.
5. Drill stem test Glorieta zone at approximately 5100-5200'.
6. Run electric logs.
7. If either above zones appear productive, set 4-1/2" 9.5# casing through zone to be tested.
8. Cement production casing with 200 sacks Class A cement.
9. Perforate zone to be tested, and stimulate if necessary.
10. Produce through 2-3/8" tubing.

IN ABOVE SPACE DESCRIBE PROPOSED PROGRAM: If proposal is to deepen or plug back, give data on present productive zone and proposed new productive zone. If proposal is to drill or deepen directionally, give pertinent data on subsurface locations and measured and true vertical depths. Give blowout preventer program, if any.

## 24.

Original signed by:

SIGNED

JESSE L. GURK

TITLE

District Superintendent

DATE

June 14, 1966

(This space for Federal or State office use)

PERMIT NO.

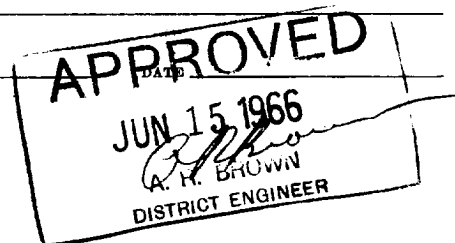
APPROVAL DATE

APPROVED BY

TITLE

CONDITIONS OF APPROVAL, IF ANY:

\*See Instructions On Reverse Side



## Instructions

**General:** This form is designed for submitting proposals to perform certain well operations, as indicated, on all types of lands and leases for appropriate action by either a Federal or a State agency, or both, pursuant to applicable Federal and/or State laws and regulations. Any necessary special instructions concerning the use of this form and the number of copies to be submitted, particularly with regard to local, area, or regional procedures and practices, either are shown below or will be issued by, or may be obtained from, the local Federal and/or State office.

**Item 1:** If the proposal is to redrill to the same reservoir at a different subsurface location or to a new reservoir, use this form with appropriate notations. Consult applicable State or Federal regulations concerning subsequent work proposals or reports on the well.

**Item 4:** If there are no applicable State requirements, locations on Federal or Indian land should be described in accordance with Federal requirements. Consult local State or Federal office for specific instructions.

**Item 14:** Needed only when location of well cannot readily be found by road from the land or lease description. A plat, or plats, separate or on this reverse side, showing the roads to, and the surveyed location of, the well, and any other required information, should be furnished when required by Federal or State agency offices.

**Items 15 and 18:** If well is to be, or has been directionally drilled, give distances for subsurface location of hole in any present or objective production zone.

**Item 22:** Consult applicable Federal or State regulations, or appropriate officials, concerning approval of the proposal before operations are started.

**NEW MEXICO OIL CONSERVATION COMMISSION**  
**WELL LOCATION AND ACREAGE DEDICATION PLAT**  
 ROSS'S OFFICE O. C. C.

Form C-102  
 Supersedes C-128  
 Effective 1-1-65

All distances must be from the outer boundaries of the Section.

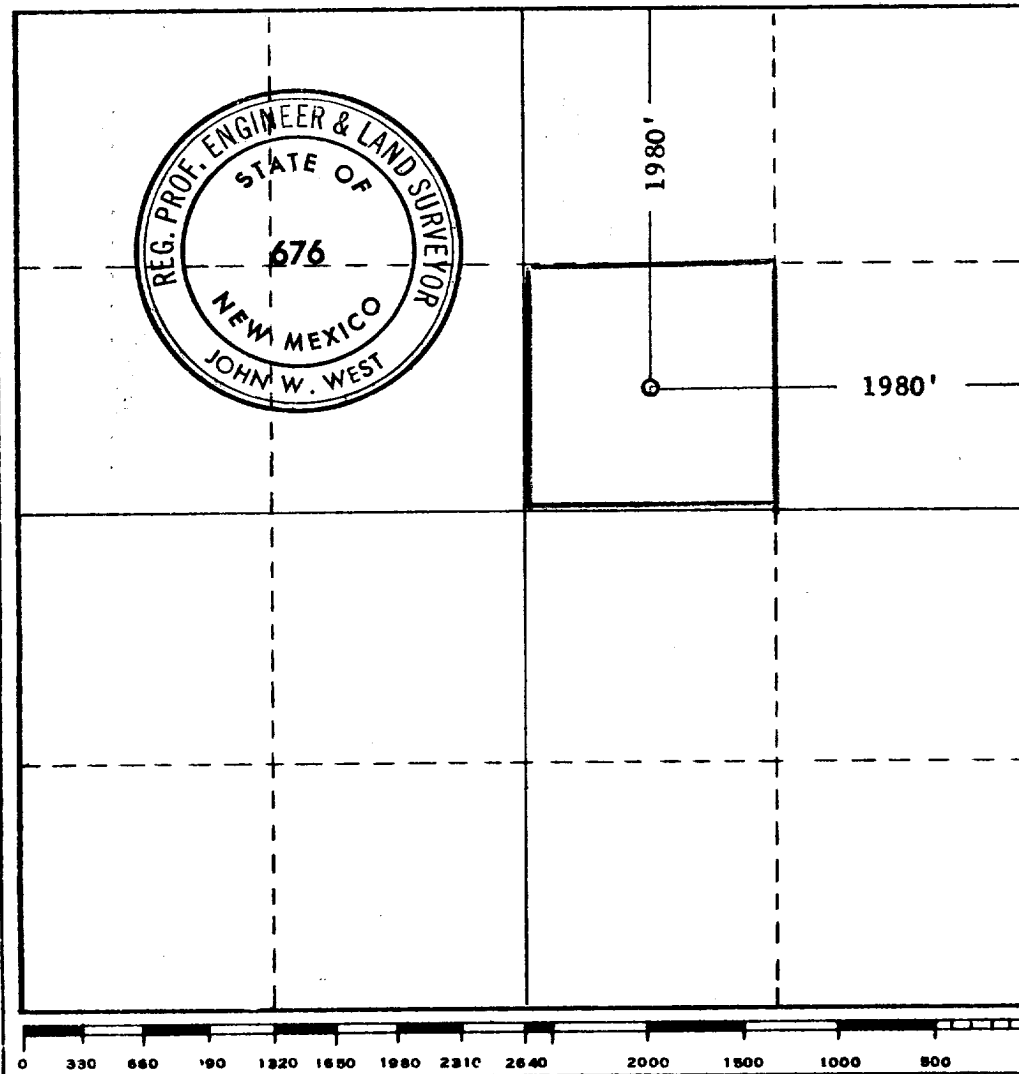
Operator <b>AZTEC OIL &amp; GAS COMPANY</b>			Lease <b>FEDERAL SA</b>		Well No. <b>1</b>
Unit Letter <b>G</b>	Section <b>24 35</b>	Township <b>7 SOUTH</b>	Range <b>37 EAST</b>	County <b>ROOSEVELT</b>	
Actual Footage Location of Well: <b>1980</b> feet from the <b>NORTH</b> line and <b>1980</b> feet from the <b>EAST</b> line					
Ground Level Elev. <b>4033.95</b>	Producing Formation <b>San Andres-Clarieta</b>	Pool <b>Wildcat</b>	Dedicated Acreage: <b>40</b> Acres		

1. Outline the acreage dedicated to the subject well by colored pencil or hatchure marks on the plat below.
2. If more than one lease is dedicated to the well, outline each and identify the ownership thereof (both as to working interest and royalty).
3. If more than one lease of different ownership is dedicated to the well, have the interests of all owners been consolidated by communitization, unitization, force-pooling, etc?

☐ Yes ☐ No If answer is "yes," type of consolidation \_\_\_\_\_

If answer is "no," list the owners and tract descriptions which have actually been consolidated. (Use reverse side of this form if necessary.) \_\_\_\_\_

No allowable will be assigned to the well until all interests have been consolidated (by communitization, unitization, forced-pooling, or otherwise) or until a non-standard unit, eliminating such interests, has been approved by the Commission.



**CERTIFICATION**

I hereby certify that the information contained herein is true and complete to the best of my knowledge and belief.  
 Original signed by:

**LESTER L. DUKE**

Name **Lester L. Duke**  
 Position **District Superintendent**

Company **Aztec Oil & Gas Company**

Date **June 15, 1966**

Date

I hereby certify that the well location shown on this plat was plotted from field notes of actual surveys made by me or under my supervision, and that the same is true and correct to the best of my knowledge and belief.

Date Surveyed  
**JUNE 14, 1966**

Registered Professional Engineer  
 and/or Land Surveyor

*John W. West*  
 Certificate No. **676**