

**NEW MEXICO OIL CONSERVATION COMMISSION  
WELL LOCATION AND ACREAGE DEDICATION PLAT**

Form C-102  
Supersedes C-128  
Effective 1-1-65

**\*\*REVISED\*\***  
All distances must be from the outer boundaries of the Section.

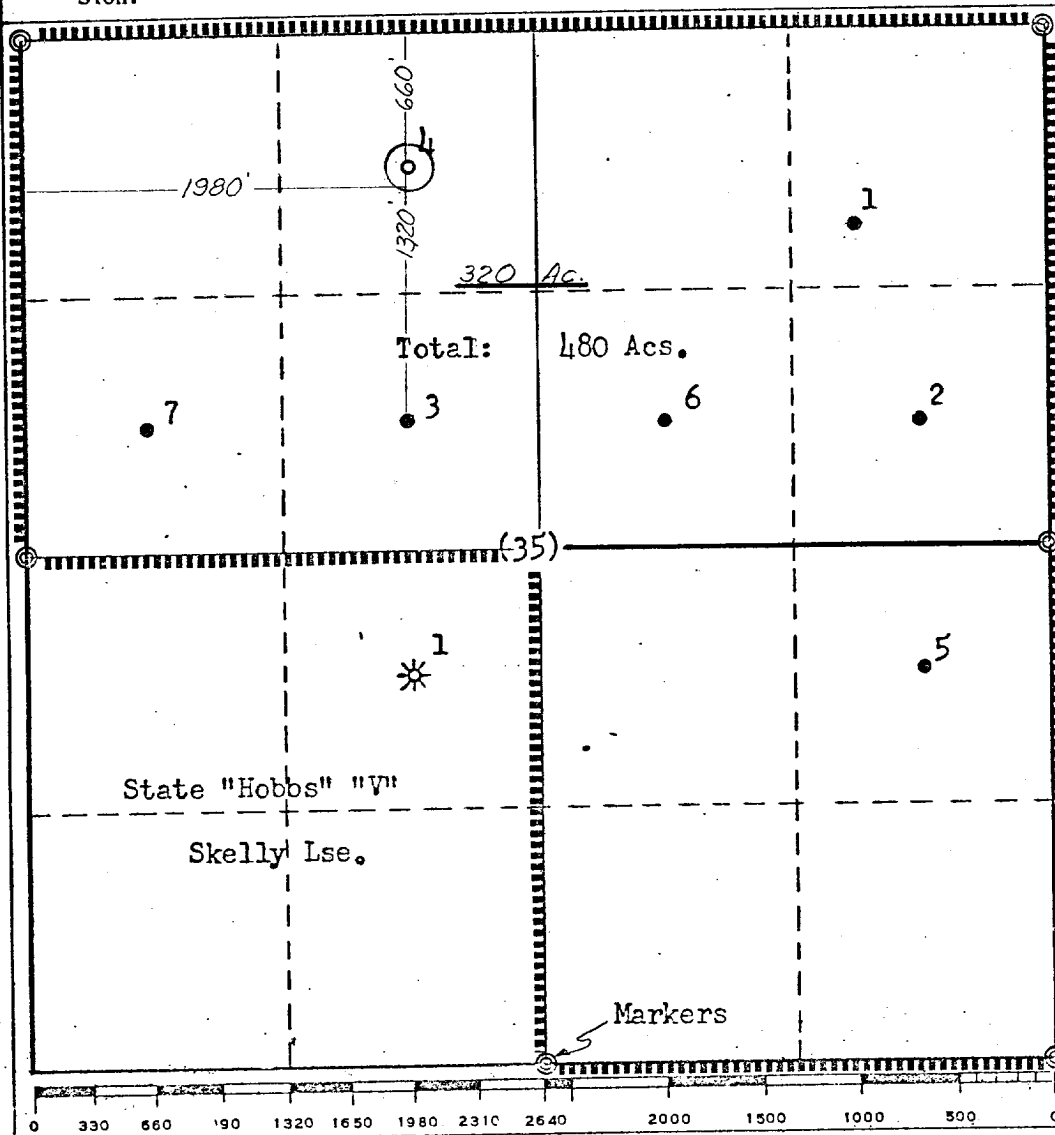
Operator <b>TEXACO Inc.</b>			Lease <b>New Mexico, 9CT State</b>		Well No. <b>4</b>
Unit Letter <b>C</b>	Section <b>35</b>	Township <b>7 South</b>	Range <b>35 East</b>	County <b>Roosevelt</b>	
Actual Footage Location of Well: <div style="display: flex; justify-content: space-between;"> <span>660' feet from the North line and 1980' feet from the West line</span> <span>Sec. 35</span> </div>					
Ground Level Elev: <b>4174'</b>	Producing Formation <b>San Andres</b>	Pool <b>Todd- Upper San Andres Gas</b>		Dedicated Acreage: <b>320</b> Acres	

1. Outline the acreage dedicated to the subject well by colored pencil or hachure marks on the plat below.
2. If more than one lease is dedicated to the well, outline each and identify the ownership thereof (both as to working interest and royalty).
3. If more than one lease of different ownership is dedicated to the well, have the interests of all owners been consolidated by communitization, unitization, force-pooling, etc?

☐ Yes   ☐ No   If answer is "yes," type of consolidation \_\_\_\_\_

If answer is "no," list the owners and tract descriptions which have actually been consolidated. (Use reverse side of this form if necessary.) \_\_\_\_\_

No allowable will be assigned to the well until all interests have been consolidated (by communitization, unitization, forced-pooling, or otherwise) or until a non-standard unit, eliminating such interests, has been approved by the Commission.



**CERTIFICATION**

I hereby certify that the information contained herein is true and complete to the best of my knowledge and belief.

*J. J. Velten*  
Name  
**J. J. Velten**

Position  
**Division Civil Engineer**

Company  
**TEXACO Inc.**

Date  
**8/15/67**

I hereby certify that the well location shown on this plat was plotted from field notes of actual surveys made by me or under my supervision, and that the same is true and correct to the best of my knowledge and belief.

Date Surveyed  
**4/10/66**

Registered Professional Engineer and/or Land Surveyor

*J. J. Velten*  
**J. J. Velten**

Certificate No.  
**8174**

\*\*\*REVISED\*\*\*  
 NEW MEXICO OIL CONSERVATION COMMISSION  
 WELL LOCATION AND ACREAGE DEDICATION PLAT

Form C-102  
 Supersedes C-128  
 Effective 1-1-65

All distances must be from the outer boundaries of the Section.

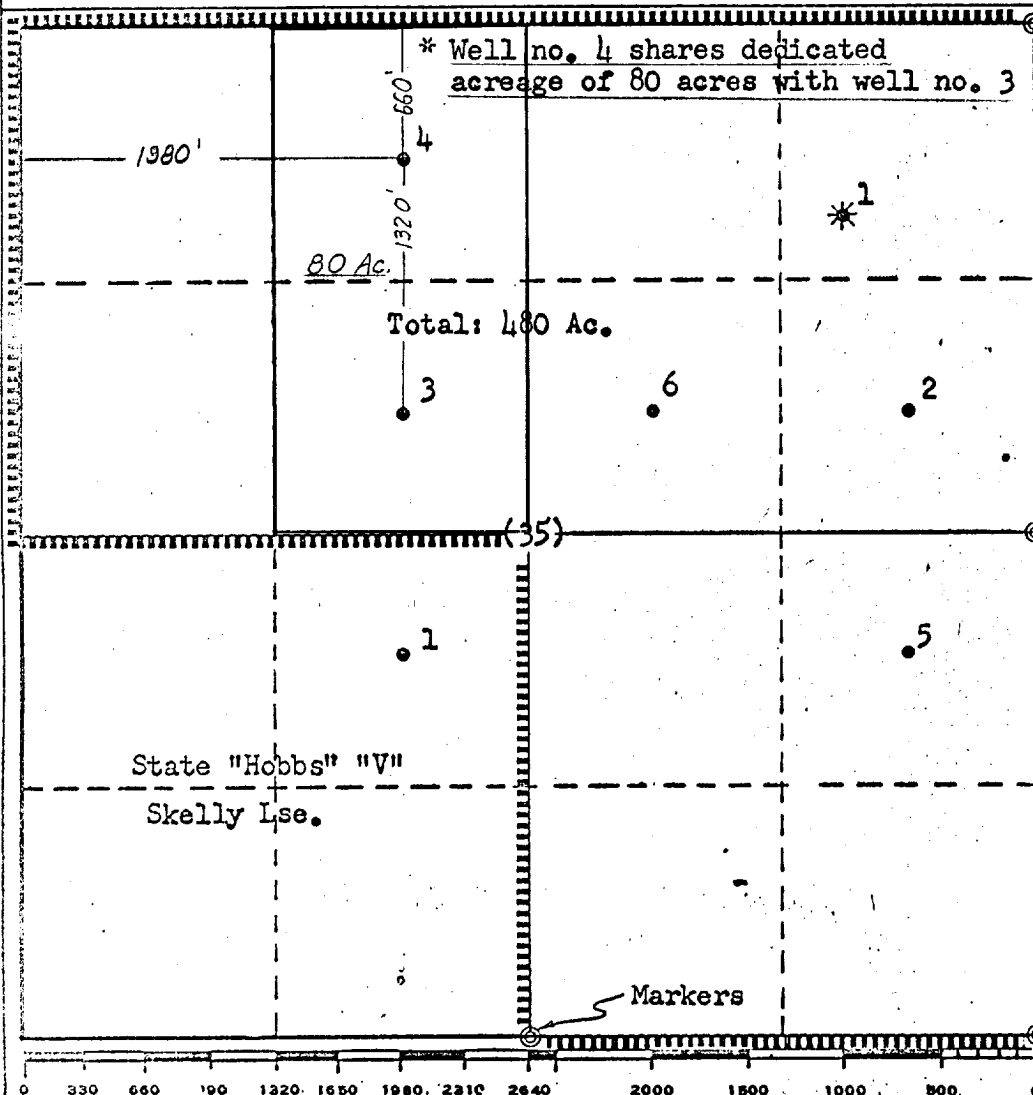
Operator <b>TEXACO Inc.</b>			Lease <b>New Mexico "CTU" State</b>		Well No. <b>4</b>
Unit Letter <b>C</b>	Section <b>35</b>	Township <b>7 South</b>	Range <b>35 East</b>	County <b>Roosevelt</b>	
Actual Footage Location of Wells: <b>660</b> feet from the <b>North</b> line and <b>1980</b> feet from the <b>West</b> line <b>Sec. 35</b>					
Ground Level Elev: <b>4174'</b>	Producing Formation <b>San Andres</b>	Pool <b>Todd San Andres</b>		Dedicated Acreage <b>*80</b> Acres	

1. Outline the acreage dedicated to the subject well by colored pencil or hachure/marks on the plat below.
2. If more than one lease is dedicated to the well, outline each and identify the ownership thereof (both as to working interest and royalty).
3. If more than one lease of different ownership is dedicated to the well, have the interests of all owners been consolidated by communitization, unitization, force-pooling, etc?

☐ Yes ☐ No If answer is "yes," type of consolidation \_\_\_\_\_

If answer is "no," list the owners and tract descriptions which have actually been consolidated. (Use reverse side of this form if necessary.) \_\_\_\_\_

No allowable will be assigned to the well until all interests have been consolidated (by communitization, unitization, forced-pooling, or otherwise) or until a non-standard unit, eliminating such interests, has been approved by the Commission.



**CERTIFICATION**

I hereby certify that the information contained herein is true and complete to the best of my knowledge and belief.

*J. J. Velten*  
 Name  
**J. J. Velten**

Position  
**Division Civil Engineer**  
 Company  
**TEXACO Inc.**

Date  
**3/29/67**

I hereby certify that the well location shown on this plat was plotted from field notes of actual surveys made by me or under my supervision, and that the same is true and correct to the best of my knowledge and belief.

Date Surveyed  
**4/10/66**

Registered Professional Engineer and/or Land Surveyor

*J. J. Velten*  
**J. J. Velten**

Certificate No.  
**8174**

COUNTY ROOSEVELT		FIELD Todd-SA		STATE NM	
OPR TEXACO INC.				MAP	
4 State of New Mexico "OT"					
Sec. 35, T-7-S, R-35-E				CO-ORD	
660' FWL, 1980' FWL of Sec.				MX 10603	
Spd 6-25-66		CLASS			
Cmp 8-31-66		FORMATION	DATUM	FORMATION	
CSG & SX - TUBING					
7 5/8"	347'	200			
4 1/2"	4335'	500			
LOGS EL GR RA IND HC A					
		TD 4335', PED 4306'			

IP San Andres Perfs 4240-4285' Flwd 18 BOPD + 4 BW. Pot. Based on 24 hr test thru 25/64" chk., IP 300#, Gravity 26., GOR 14,700.

Distribution limited and publication prohibited by subscribers' agreement.  
Reproduction rights reserved by Williams & Lee Scouting Service, Inc.

CONT. Capitan Drlg. Co.	PROP DEPTH 4355'	TYPE
DATE		

Z.R. 6-30-66  
PD 4355' - SA  
Contractor - Capitan Drlg. Co.

6-27-66 Drlg. 100'.  
7-5-66 TD 347', SD Repairs.  
7-11-66 Drlg. 2379'.  
7-18-66 TD 4335', WOC.  
7-25-66 TD 4335', PED 4306', prep to frac.  
Perf @ 4240', 4242', 4246', 4249', 4254',  
4256', 4260', 4266', 4273', 4285' W/2 SPI  
Acid (4240-85') 2000 gals 15%  
Swbd 7 ELO, 14 BNO + 10 BLW/36 hrs.

8-1-66 TD 4335', PED 4306', testg.  
Frac (4240-85') 23,000 gals wtr + 31,500# sd.  
Flwd 14 BNO + 146 BLW/71 hrs thru 25/64" chk.,  
TP 275#.

8-8-66            TD 4335', PBD 4306', tstg.  
                 Flwd 70 BO + 22 BLW/72 hrs, TP 200#, CP 550#.  
8-15-66            TD 4335', PBD 4306', tstg.  
                 Flwd 51 BO + 16 BLW/72 hrs.  
8-22-66            TD 4335', PBD 4306', tstg.  
                 Flwd 48 BNO + 12 BLW/72 hrs, TP 80#, CP  
                 300#.  
8-29-66            TD 4335', PBD 4306', tstg.  
                 Flwd 17 BO + 3 BLW/24 hrs, TP 100#, CP  
                 300#.  
9-6-66            TD 4335', PBD 4306', COMPLETE.  
                 LOG TOPS: Anhydrite 2070', Yates 2333',  
                 San Andres 3482', Slaughter 3993'.

COUNTY ROOSEVELT FIELD Todd STATE NM OWWO  
 OPR TEXACO INC. MAP  
 4 New Mexico "CT" State  
 Sec. 35, T-7-S, R-35-E CO-ORD  
 660' FNL, 1980' FWL of Sec.

		CLASS		EL	
Re-Cmp	4-8-68	FORMATION	DATUM	FORMATION	DATUM
CSG & SX - TUBING					
7 5/8"	347'	200			
4 1/2"	4335'	500			
LOGS EL GR RA IND HC A					
		TD 4335', PBD 4216'			

IP San Andres Perfs 4125-96' CAOFP 1410 MCFGPD. Pot. Based on  
 5-point test; SIWHP 484#, GOR dry; Gravity (gas) .680.

Distribution limited and publication prohibited by subscribers' agreement.  
 Reproduction rights reserved by Williams & Lee Scouting Service, Inc.

CONT. PROP DEPTH 4216' TYPE WO  
 DATE

5-6-68 F.R.C. 5-9-68; OWWO  
 (Orig. Cmp 8-1-66 thru SA Perfs 4240-85', OTD  
 4335', OPB 4306')  
 TD 4335', PBD 4216', COMPLETE  
 Set CIBP @ 4216'  
 Perf @ 4125', 4155', 4162', 4165', 4190',  
 4196' W/2 SPI  
 Acid (4125-96') 2500 gals (15% NE)  
 FIVE-POINT TEST:

MCFGPD	Choke	Time	TP
41	1/16"	1 hr	480.5#
88	3/32"	1 hr	474.2#
162	1/8"	1 hr	463.2#
350	3/16"	1 hr	437.7#
553	1/4"	1 hr	387.1#