

NEW MEXICO OIL CONSERVATION COMMISSION
WELL LOCATION AND ACREAGE DEDICATION PLAT
 RECORDS OFFICE O. C. C.

Form C-102
 Supersedes C-128
 Effective 1-1-65

All distances must be from the outer boundaries of the Section.

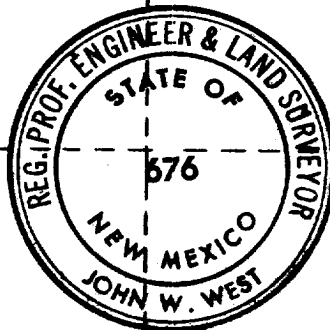
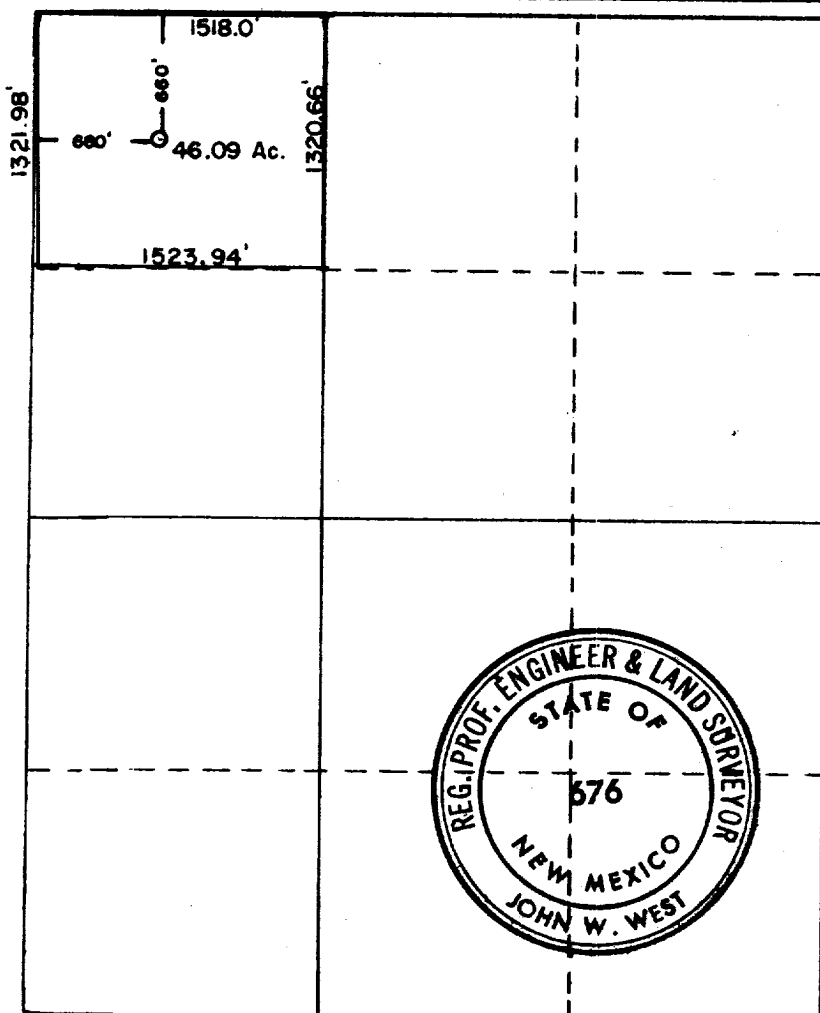
Operator TENNECO OIL COMPANY			Lease STATE "V" JUL 14 11 12 AM '66		Well No. 1
Unit Letter C	Section 30	Township 7 SOUTH	Range 34 EAST	County ROOSEVELT	
Actual Footage Location of Well: 660 feet from the NORTH line and 660 feet from the WEST line					
Ground Level Elev. 4320	Producing Formation San Andres	Pool Chisveroo	Dedicated Acreage: 46 Acres		

1. Outline the acreage dedicated to the subject well by colored pencil or hachure marks on the plat below.
2. If more than one lease is dedicated to the well, outline each and identify the ownership thereof (both as to working interest and royalty).
3. If more than one lease of different ownership is dedicated to the well, have the interests of all owners been consolidated by communitization, unitization, force-pooling, etc?

☐ Yes ☐ No If answer is "yes," type of consolidation _____

If answer is "no," list the owners and tract descriptions which have actually been consolidated. (Use reverse side of this form if necessary.) _____

No allowable will be assigned to the well until all interests have been consolidated (by communitization, unitization, forced-pooling, or otherwise) or until a non-standard unit, eliminating such interests, has been approved by the Commission.



CERTIFICATION

I hereby certify that the information contained herein is true and complete to the best of my knowledge and belief.

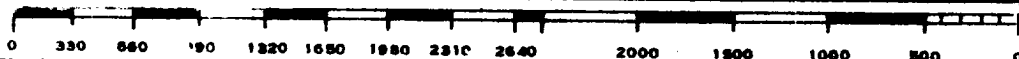
Name
A. W. Lang **A. W. Lang**
 Position
District Production Supt.
 Company
Tenneco Oil Company
 Date
July 13, 1966

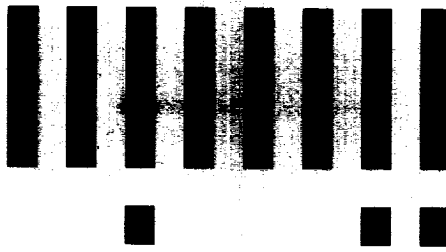
I hereby certify that the well location shown on this plat was plotted from field notes of actual surveys made by me or under my supervision, and that the same is true and correct to the best of my knowledge and belief.

Date Surveyed
JULY 1, 1966
 Registered Professional Engineer and/or Land Surveyor

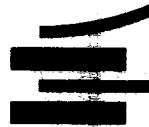
John W. West
 Certificate No.

676





LTR



Job separation sheet

TEANECO OIL COMPANY

DRILLING PROCEDURE

HOBBS FIELD O.E.C.C.

JUL 10 4 21 AM '66

LAND DIVISION

STATE: State V

COUNTY: Chaveroo

LOCATION: 660' FNL & 660' FWL
Section 30, T-7-S, R-34-E
Roosevelt County, New Mexico
ELEVATION: 4500'

TYPE OF WELL: Oil

ENGINEERING DIVISION

WELL: No. 1

STATE: New Mexico

EST. RES.: 4320 G.L.

WELL LOG, Casing and Cementing Program

1. Drill 11" hole to 360'.
2. Run 2 1/2", J-55 8-5/8 casing and cement with Class C / 2% CaCl₂ to circulate. Run guide shoe and insert float with bar centralizers on first two joints.
3. If float holds, release pressure immediately. Install BOP, test casing to 800 psi for 30 minutes and drill out after 8 hours total WOC.
4. Drill 7-7/8" hole to 4500'.
5. Run 10.5", J-55, ST&C 4-1/2" casing to T.D. Cement with sufficient Class C / 16% gel / 3% salt to reach the base of salt. Tail in with Latex - Class C to cover the producing formation. Use differential fillup equipment with reciprocating scratchers and centralizers to cover productive zone. If float holds, release pressure immediately and set slips. After 8 hrs. WOC run temperature survey and release rig.

HOBOES OF THE C.C.C.

JUL 6 11 42 AM '66

Spud mud of water, gel and lime as needed.
Fresh water maintaining a constant
32-34 sec/1000 cc native mud viscosity.
Saturated brine maintaining a constant
32-34 sec/1000 cc native mud viscosity.

Saturated brine maintaining a constant
32-34 sec/1000 cc native mud viscosity.

4100-T.D.

Low solids salt gel as follows:

Weight	10.4 to 10.7 lb/gal.
Viscosity	38 to 40 sec/1000 cc
Water Loss	10 cc or less
Oil	5-8% No. 2 diesel oil

1. The first step is to identify the problem or question that needs to be answered. This involves understanding the context and the specific requirements of the task.

1. No. 1000 900 will be used for Company operations only.
2. When tripping up, the well shall be kept under control and maintained at a pressure which will prevent the well from being shut in by company representative.
3. The well shall be kept under control at least once each day, or as company representative requires.
4. An adequate set of ground plans will be required on location at all times while drilling or completing.
5. All choke manifold, lines and valves will be located at the end of the well and away from the wellhead.

100-443740-100

Figure 1 is a line graph illustrating the percentage of the total sample for each age group across different years. The y-axis represents the percentage of the total sample, ranging from 0 to 100. The x-axis represents the years, from 1970 to 2020. The age groups are: 0-14, 15-24, 25-34, 35-44, 45-54, 55-64, 65-74, and 75+. The graph shows a clear trend of aging, with the 0-14 group decreasing from about 25% in 1970 to about 10% in 2020, and the 65-74 group increasing from about 10% in 1970 to about 25% in 2020.

[illegible]

1. Drill pipe wall is drilled on all coring, testing, logging and casing points.

HOELS-11-13-66

JUL 6 11 42 AM '66

1. The crew shall be on every trip or every 500' whichever is longer. All crew members will accompany AAD's tour and report.

2. The crew shall be on every trip or every 500' whichever is longer. If deviation exceeds 10' in 100', the drill shall be plugged back and straightened.

3. The crew shall be on every trip or every 500' whichever is longer.

0 - 500	10	2000 - 3000	10
500 - 1000	20	3000 - 4000	20
1000 - 1500	30	4000 - 5000	30
1500 - 2000	40	5000 - 6000	40
2000 - 2500	50	6000 - 7000	50

4. The crew shall be on every trip or every 500' whichever is longer. The rate of penetration will be used.

5. The crew shall be on every trip or every 500' whichever is longer. The rate of penetration will be used.

6. The crew shall be on every trip or every 500' whichever is longer. The rate of penetration will be used.

Gamma Ray - Density - T.D. to surface

10' samples 3900 to T.D. Samples to be washed, sacked, labeled and tied in bundles of 100 feet.

None

None

JUL 14 11 13 AM '66

HOBBS OFFICE O. C. C.

JUL 6 11 42 AM '66

Red Beds	
Anhydrite	1530
Top Salt	1640
Base Salt	2170
Yates	2255

Seven Rivers	2365
Queen	3055
Grayburg	3495
Slaughter	4088

1. The Daily Drilling Report will be filled out completely and neatly each day. The clear and legible copy will be mailed daily to Tenneco Oil Company. Mail Company Drilling Reports as soon as each sheet is furnished with Daily Drilling Report.
2. A daily report sheet and a cost sheet will be furnished by the operator for each day. The contractor's tool pusher will keep these forms current and complete. The daily cost, total cumulative cost and cumulative mud cost will be given daily along with the Tenneco morning report. At the conclusion of the well, the cost forms will be mailed to Tenneco Oil Company, P. O. Box 1088, Midland, Texas.
3. The morning report shall be called to Tenneco's Midland office as soon after 8:00 a.m. each weekday morning as practical. Phone number is MF 3-4621, area code 915.
4. For notifications at other than office hours, call:

URGENT:

EMERGENCY:

James Eaton - OX 4-7668

A. R. Gibson - MU 4-7545

B. E. Desadier - MU 4-5390

A. W. Lang - MU 23010

Note: Please notify James Eaton in sufficient time for him to be on location by 4000'.

APPROVED BY:

APPROVED BY:

A. R. Gibson

A. R. Gibson
A. R. GIBSON

B. E. Desadier by J. E. Eaton
B. E. DESADIER

A. W. Lang
A. W. LANG