

NEW MEXICO OIL CONSERVATION COMMISSION
WELL LOCATION AND ACREAGE DEDICATION PLAT

Form C-102
Supersedes C-128
Effective 1-1-65

All distances must be from the outer boundaries of the section.

MAR 21 11 05 AM '67

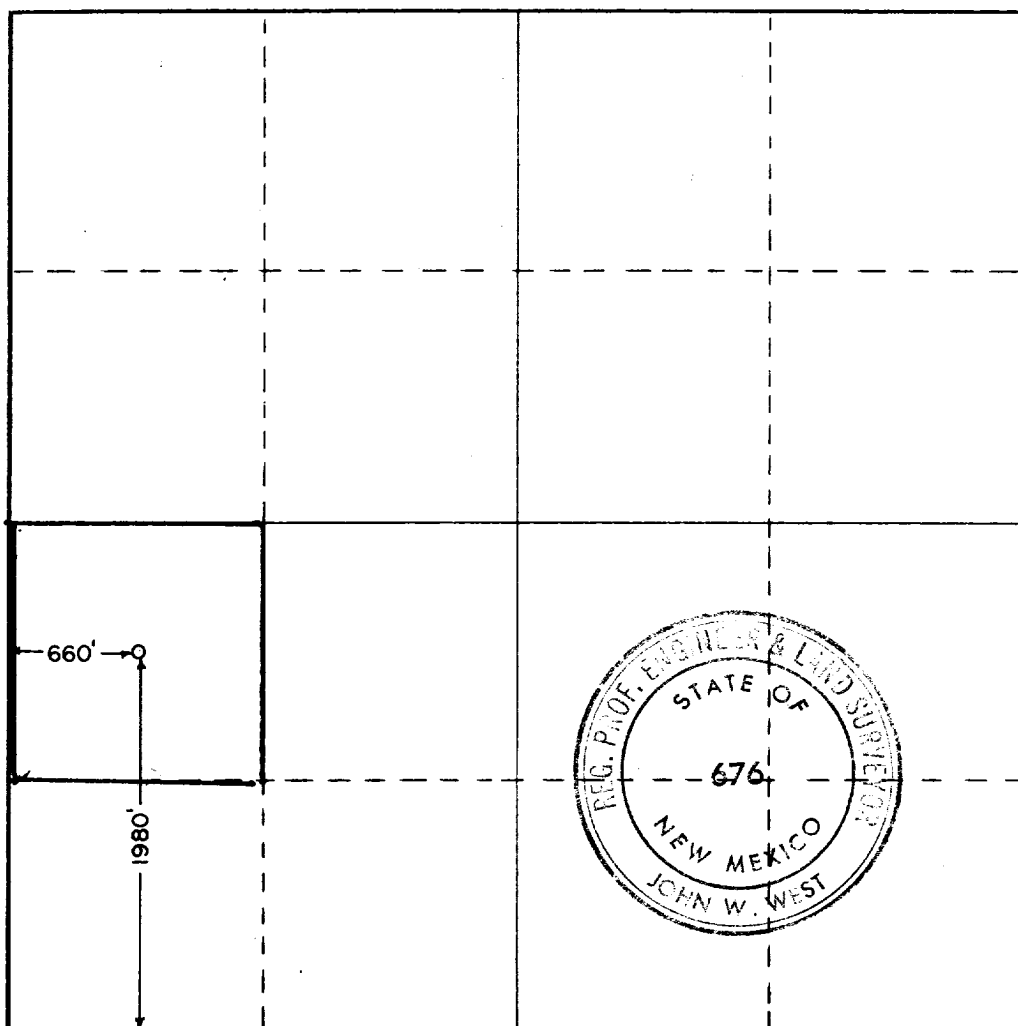
Operator CITIES SERVICE OIL CO.		Lease GOVERNMENT "L"		Well No. 1
Unit Letter L	Section 11	Township 7 SOUTH	Range 34 EAST	County ROOSEVELT
Actual Footage Location of Well: 1980 feet from the SOUTH line and 660 feet from the WEST line				
Ground Level Elev. 4915 feet	Producing Formation San Andres	Pool Wildcat	Dedicated Acreage: 40 Acres	

1. Outline the acreage dedicated to the subject well by colored pencil or hatchure marks on the plat below.
2. If more than one lease is dedicated to the well, outline each and identify the ownership thereof (both as to working interest and royalty).
3. If more than one lease of different ownership is dedicated to the well, have the interests of all owners been consolidated by communitization, unitization, force-pooling, etc?

☐ Yes ☐ No If answer is "yes," type of consolidation _____

If answer is "no," list the owners and tract descriptions which have actually been consolidated. (Use reverse side of this form if necessary.) _____

No allowable will be assigned to the well until all interests have been consolidated (by communitization, unitization, forced-pooling, or otherwise) or until a non-standard unit, eliminating such interests, has been approved by the Commission.



CERTIFICATION

I hereby certify that the information contained herein is true and complete to the best of my knowledge and belief.

Name _____

Position

District Clerk

Company

Cities Service Oil Company

Date

March 18, 1967

I hereby certify that the well location shown on this plat was plotted from field notes of actual surveys made by me or under my supervision, and that the same is true and correct to the best of my knowledge and belief.

MARCH 4, 1967

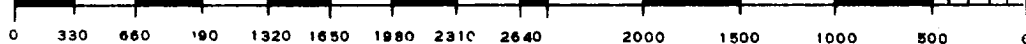
Date Surveyed

Registered Professional Engineer and/or Land Surveyor

John W. West

Certificate No.

676





LTR



Job separation sheet

1

COUNTY	ROOSEVELT	FIELD	Wildcat	STATE	NM
OPR	CITIES SERVICE OIL CO.				MAP
1 Government "L"					
Sec. 11, T-7-S, R-34-E				CO-ORD	
1980' FSL, 660' FWL of Sec.				30-043-20014	
Spd 3-27-67		CLASS		EL	
Cmp 4-12-67		FORMATION	DATUM	FORMATION	DATUM
CSG & SX - TUBING					
8 5/8" 481' 450					
LOGS EL GR RA IND HC A					
		TD 5000'			
PLUGGED & ABANDONED					

Distribution limited and publication prohibited by subscribers' agreement.
 Reproduction rights reserved by Williams & Lee Scouting Service, Inc.

CONT.	PROP DEPTH	4700'	TYPE	RT
DATE				

	F.R. 3-23-67
	PD 4700' - SA
3-27-67	MI Rotary
4-3-67	Drlg. 4200'.
4-10-67	TD 4833', on trip.
	Cored 4336-96', rec 59' dolo & anhy., w/NS.
	Cored 4396-4456', rec 59' being:
	47' dolo., w/scatt shows;
	12' anhy.
	Cored 4456-4509', rec 53' being:
	2' dolo., w/NS;
	20' anhy;
	31' dolo., bldg wtr from frac & PPP.

ROOSEVELT Wildcat NM
CITIES SERVICE OIL CO., #1 Government "L"

Sec. 11-7S-34E

Page #2

4-17-67

TD 5000', PLUGGED & ABANDONED.

Drld to 5000'

LOG TOPS: Yates 2420', Queen 3112', San
Andres 3560', Slaughter 4266', Glorieta 4953'.