

NEW MEXICO OIL CONSERVATION COMMISSION
WELL LOCATION AND ACREAGE DEDICATION PLAT

Form C-102
Supersedes C-128
Effective 1-1-65

All distances must be from the outer boundaries of the Section.

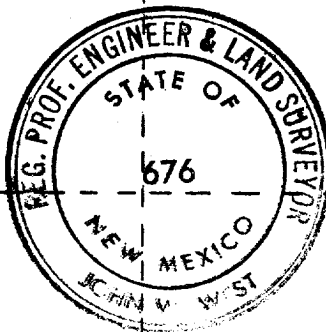
Operator FRANKLIN, ASTON & FAIR		Lease ATLANTIC SMITH STATE <i>NOV 2 1967</i>		Well No. 1
Unit Letter J	Section 31	Township 7 SOUTH	Range 36 EAST	County ROOSEVELT
Actual Footage Location of Well: 2180 feet from the SOUTH line and 1980 feet from the EAST line				
Ground Level Elev. 4136'	Producing Formation Slaughter zone	Pool Todd Lower San Andres	Dedicated Acreage: 80 Acres	

1. Outline the acreage dedicated to the subject well by colored pencil or hatchure marks on the plat below.
2. If more than one lease is dedicated to the well, outline each and identify the ownership thereof (both as to working interest and royalty).
3. If more than one lease of different ownership is dedicated to the well, have the interests of all owners been consolidated by communitization, unitization, force-pooling, etc?

☐ Yes ☐ No If answer is "yes," type of consolidation _____

If answer is "no," list the owners and tract descriptions which have actually been consolidated. (Use reverse side of this form if necessary.) _____

No allowable will be assigned to the well until all interests have been consolidated (by communitization, unitization, forced-pooling, or otherwise) or until a non-standard unit, eliminating such interests, has been approved by the Commission.



CERTIFICATION

I hereby certify that the information contained herein is true and complete to the best of my knowledge and belief.

Grant M. Smith

Name
Grant M. Smith

Position
Geologist

Company
Franklin, Aston & Fair, Inc.

Date
November 1, 1967

I hereby certify that the well location shown on this plat was plotted from field notes of actual surveys made by me or under my supervision, and that the same is true and correct to the best of my knowledge and belief.

OCTOBER 31, 1967

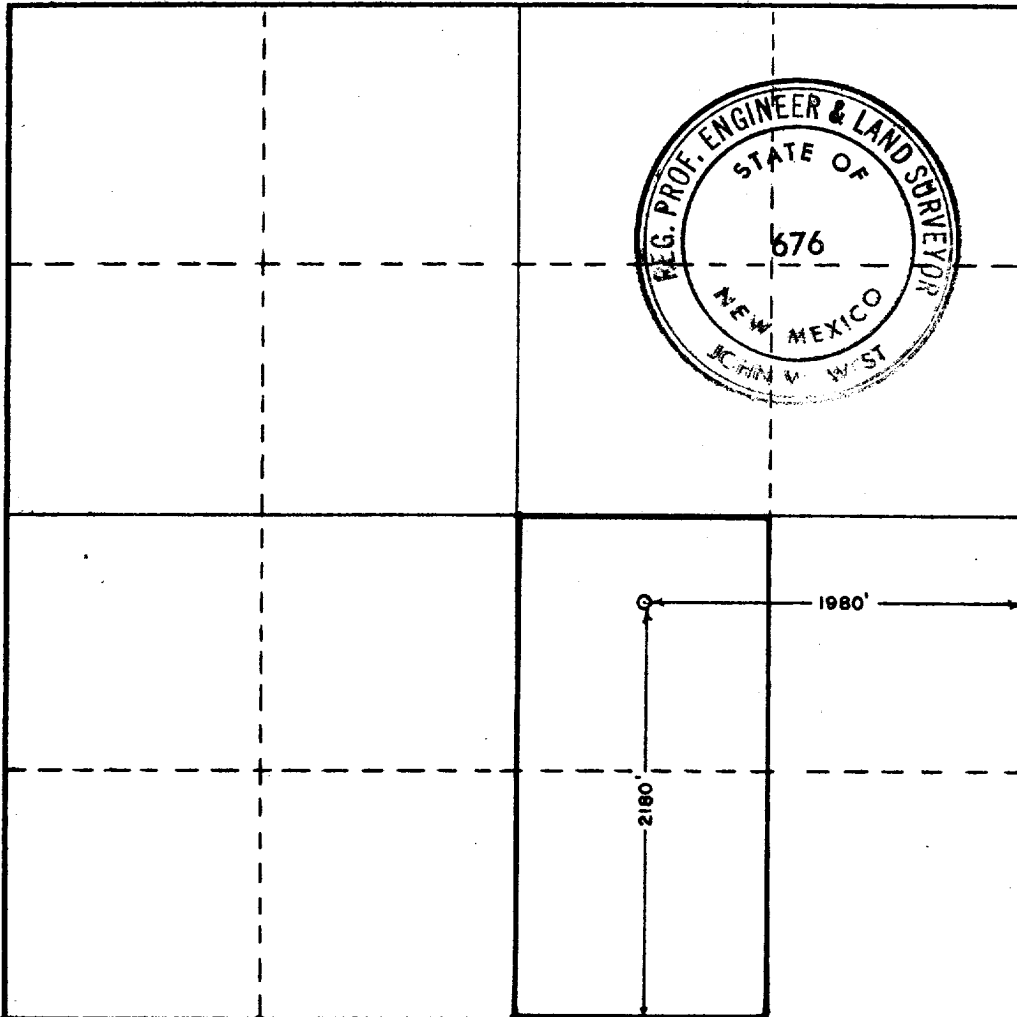
Date Surveyed

Registered Professional Engineer and/or Land Surveyor

John H. West

Certificate No.

676



0 330 660 990 1320 1650 1980 2310 2640 2970 3300 0