

## NEW MEXICO OIL CONSERVATION COMMISSION

Santa Fe, New Mexico  
HOBBS OFFICE O. O. C.Form C-101  
Revised (12/1/55)

## NOTICE OF INTENTION TO DRILL

Notice must be given to the District Office of the Oil Conservation Commission and approval obtained before drilling or recompletion begins. If changes in the proposed plan are considered advisable, a copy of this notice showing such changes will be returned to the sender. Submit this notice in **QUINTUPLICATE**. One copy will be returned following approval. See additional instructions in Rules and Regulations of the Commission.

If State Land submit 6 Copies Attach Form C-128 in triplicate to first 3 copies of form C-101

Lovington, New Mexico

June 20, 1968

(Place)

(Date)

OIL CONSERVATION COMMISSION  
SANTA FE, NEW MEXICO

Gentlemen:

You are hereby notified that it is our intention to commence the Drilling of a well to be known as

A. C. Holder

(Company or Operator)

Atlantic State

(Lease)

Well No. 1, in K The well is

located 2120 feet from the South line and 2023 feet from the West line of Section 31, T 7 South, R 36 East, NMPM.

(GIVE LOCATION FROM SECTION LINE) Todd San Andres Pool, Roosevelt County

If State Land the Oil and Gas Lease is No. NM-927 (1) 100

If patented land the owner is

Address

We propose to drill well with drilling equipment as follows:

Rotary

The status of plugging bond is in force and accepted

Drilling Contractor Verna Drilling Company

P.O. Box 1,000

Levelland, Texas

We intend to complete this well in the San Andres formation at an approximate depth of 4,400 feet.

## CASING PROGRAM

We propose to use the following strings of Casing and to cement them as indicated:

Size of Hole	Size of Casing	Weight per Foot	New or Second Hand	Depth	Sacks Cement
12 $\frac{1}{4}$	8-5/8	20#	New	300'	225 Circulate
7-7/8	5 $\frac{1}{2}$	14#	SH	4400'	275

If changes in the above plans become advisable we will notify you immediately.

ADDITIONAL INFORMATION (If recompletion give full details of proposed plan of work.)

APPROVAL VALID FOR 90 DAYS UNLESS

DRILLING COMMENCED

EXPIRES 9-24-68

THE COMMISSION MUST BE NOTIFIED 24 HOURS PRIOR TO RUNNING CASING

Approved, 19.....  
Except as follows:

Sincerely yours,

A. C. Holder  
(Company or Operator)

By: A. C. Holder

Position: Operator

Send Communications regarding well to

Name: A. C. Holder

Address: Box 1476, Lovington, N.M. 88260

OIL CONSERVATION COMMISSION

By: [Signature]

NEW MEXICO OIL CONSERVATION COMMISSION  
WELL LOCATION AND ACREAGE DEDICATION PLAT  
OFFICE O. C. C.

Form C-102  
Supersedes C-128  
Effective 1-1-65

All distances must be from the outer boundaries of the Section.

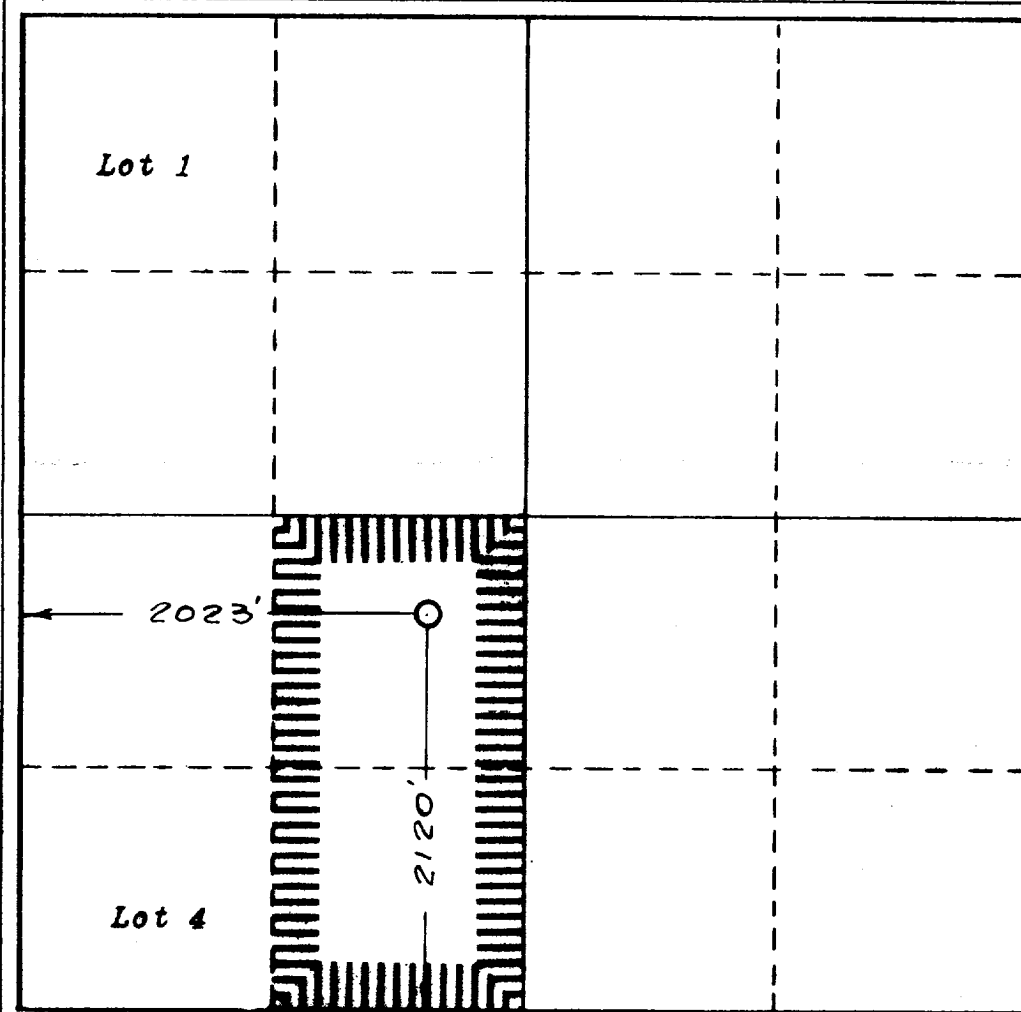
Operator <b>A. C. HOLDER</b>		Date <b>JUN 21 11 32 AM '68</b>		Well No. <b>1</b>
Unit Letter <b>K</b>	Section <b>31</b>	Township <b>7 South</b>	Range <b>36 East</b>	County <b>Reconalt</b>
Actual Footage Location of Well: <b>2120</b> feet from the <b>South</b> line and <b>2023</b> feet from the <b>West</b> line				
Ground Level Elev. <b>4140</b>	Producing Formation <b>San Andres</b>	Pool <b>Todd</b>	Dedicated Acreage <b>80</b> Acres	

1. Outline the acreage dedicated to the subject well by colored pencil or hardware marks on the plat below.
2. If more than one lease is dedicated to the well, outline each and identify the ownership thereof (both as to working interest and royalty).
3. If more than one lease of different ownership is dedicated to the well, have the interests of all owners been consolidated by communitization, unitization, force-pooling, etc?

☒ Yes ☐ No If answer is "yes," type of consolidation One lease

If answer is "no," list the owners and tract descriptions which have actually been consolidated. (Use reverse side of this form if necessary.)

No allowable will be assigned to the well until all interests have been consolidated (by communitization, unitization, forced-pooling, or otherwise) or until a non-standard unit, eliminating such interests, has been approved by the Commission.



CERTIFICATION

I hereby certify that the information contained herein is true and complete to the best of my knowledge and belief.

*A. C. Holder*

Name

**A. C. HOLDER**

Position

**OPERATOR**

Company

**A. C. HOLDER**

Date

**June 20, 1968**

I hereby certify that the well location shown on this plat was plotted from field notes of actual surveys made by me or under my supervision, and that the same is true and correct to the best of my knowledge and belief.

Date Surveyed

**June 20, 1968**

Registered Professional Engineer and/or Land Surveyor

*John W. Pheasant*

Certificate No.

**1559**

