

UNITED STATES
DEPARTMENT OF THE INTERIOR
GEOLOGICAL SURVEY

APPLICATION FOR PERMIT TO DRILL, DEEPEN, OR PLUG BACK

1a. TYPE OF WORK

DRILL ☒DEEPEN ☐PLUG BACK ☐

b. TYPE OF WELL

OIL
WELL ☒GAS
WELL ☐

OTHER

SINGLE
ZONE ☒MULTIPLE
ZONE ☐

2. NAME OF OPERATOR

Southwestern Natural Gas, Inc.

3. ADDRESS OF OPERATOR

900 Bank of the Southwest

4. LOCATION OF WELL (Report location clearly and in accordance with any State requirements.)

At surface

1980' FNL and 1980' FWL

At proposed prod. zone

14. DISTANCE IN MILES AND DIRECTION FROM NEAREST TOWN OR POST OFFICE*

16 miles West of Milnesand, New Mexico

15. DISTANCE FROM PROPOSED*

LOCATION TO NEAREST
PROPERTY OR LEASE LINE, FT.
(Also to nearest drlg. unit line, if any)

1980

16. NO. OF ACRES IN LEASE

480

17. NO. OF ACRES ASSIGNED
TO THIS WELL

40

18. DISTANCE FROM PROPOSED LOCATION*

TO NEAREST WELL, DRILLING, COMPLETED,
OR APPLIED FOR, ON THIS LEASE, FT.

1320

19. PROPOSED DEPTH

4600

20. ROTARY OR CABLE TOOLS

Rotary

21. ELEVATIONS (Show whether DF, RT, GR, etc.)

4426 g.l.

22. APPROX. DATE WORK WILL START*

6/27/68

23.

PROPOSED CASING AND CEMENTING PROGRAM

SIZE OF HOLE	SIZE OF CASING	WEIGHT PER FOOT	SETTING DEPTH	QUANTITY OF CEMENT
11"	7"	23#	1700'	Sufficient to circulate
6½"	4½"	10.5#	4600'	150 sks.

1. Drill 11" hole to top of Anhydrite (approx. 1700') and cement 7" casing to surface (circulated).
2. Test casing to 1000 psi to 30 mins.
3. Drill 6½" hole to 4600' and run 4½", 10.5# casing to 4600' (proposed total depth) and cement w/150 sks cement.
4. Run temperature survey. Pressure test 4½" casing to 1000 psi for 30 mins.
5. Deviation surveys will be made on every trip or 500 feet. Maximum deviation allowed is 6°.

IN ABOVE SPACE DESCRIBE PROPOSED PROGRAM: If proposal is to deepen or plug back, give data on present productive zone and proposed new productive zone. If proposal is to drill or deepen directionally, give pertinent data on subsurface locations and measured and true vertical depths. Give blowout preventer program, if any.

24.

SIGNED



TITLE

Office Manager

DATE

June 18, 1968

(This space for Federal or State office use)

PERMIT NO.

APPROVAL DATE

APPROVED BY

TITLE

CONDITIONS OF APPROVAL, IF ANY:

APPROVED
JUN 19 1968
A. R. BROWN
DISTRICT ENGINEER

NEW MEXICO OIL CONSERVATION COMMISSION
WELL LOCATION AND ACREAGE DEDICATION PLAT

Form C-102
Supersedes C-128
Effective 1-1-65

HOBBS OFFICE O.C.C.

All distances must be from the outer boundaries of the Section.

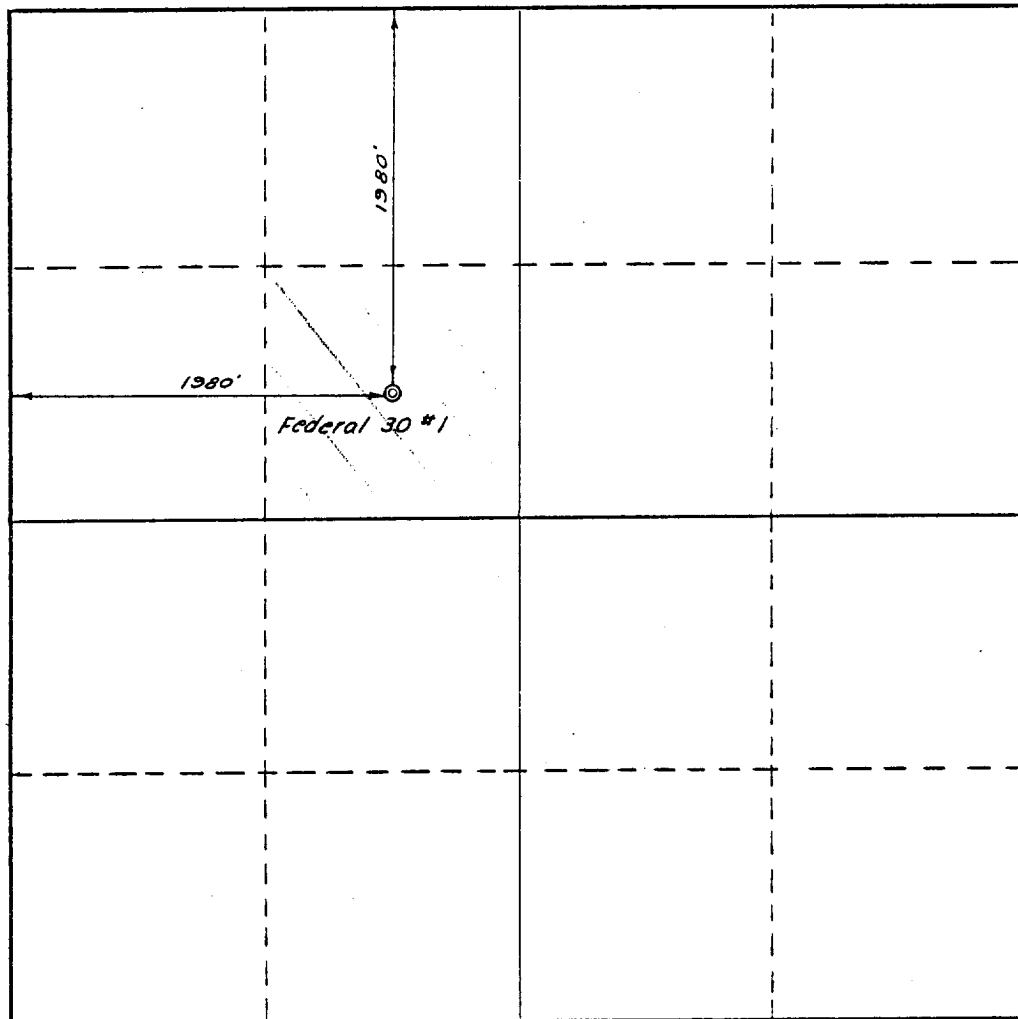
Operator Southwestern Natural Gas, Inc.		Lease JUN 25 10 20 AM '68		Well No. 1
Unit Letter F	Section 30	Township 7-South	Range 33-East	County Roosevelt
Actual Footage Location of Well: 1980 feet from the North line and 1980 feet from the West line				
Ground Level Elev. 4426'	Producing Formation San Andres	Pool Chaveroo	Dedicated Acreage: 40 Acres	

1. Outline the acreage dedicated to the subject well by colored pencil or hachure marks on the plat below.
2. If more than one lease is dedicated to the well, outline each and identify the ownership thereof (both as to working interest and royalty).
3. If more than one lease of different ownership is dedicated to the well, have the interests of all owners been consolidated by communitization, unitization, force-pooling, etc?

☐ Yes ☐ No If answer is "yes," type of consolidation _____

If answer is "no," list the owners and tract descriptions which have actually been consolidated. (Use reverse side of this form if necessary.) _____

No allowable will be assigned to the well until all interests have been consolidated (by communitization, unitization, forced-pooling, or otherwise) or until a non-standard unit, eliminating such interests, has been approved by the Commission.



CERTIFICATION

I hereby certify that the information contained herein is true and complete to the best of my knowledge and belief.

Jan McCammon

Name

Jan McCammon

Position

Office Manager

Company

Southwestern Natural Gas, Inc.

Date

June 18, 1968

I hereby certify that the well location shown on this plat was plotted from field notes of actual surveys made by me or under my supervision, and that the same is true and correct to the best of my knowledge and belief.

May 11, 1968

Date Surveyed

Registered Professional Engineer and/or Land Surveyor

James P. [Signature]

Certificate No.

1411

