

COUNTY ROOSEVELT FIELD Prairie, S. STATE NM 30-641-20157  
 HUBER, J. M. CORP. MAP  
 1 Petrofina-Federal CO-ORD  
 Sec 20, T-8-S, R-36-E  
 1830' FNL, 660' FEL of Sec. EL [REDACTED]  
 Spd 11-17-68  
 Cmp 2-17-69

FORMATION	DATUM	CLASS	FORMATION	DATUM

LOG & SX TUBING  
 3 3/8" at 470' w/ 400 sx  
 3 3/8" at 4320' w/350 sx  
 1 1/2" at 12,955' w/650 sx

EL GR RA IND HC A TD 12,955'; PBD 12,913'  
 (Devonian) Perfs 12,867-885' F 717 BOPD. Pot based on 24  
 test thru 15/64" chk, TP 225#

Distribution limited and publication prohibited by subscribers' agreement.  
 Reproduction rights reserved by Williams & Lee Scouting Service, Inc.

Tri Service PROP DEPTH 13,000' TYPE

F.R. 11-14-68  
 PD 13,000' (Devonian)  
 Contractor - Tri Service  
 TD 470'; WOC  
 Drlg. 4555' 1m  
 Drlg. 7267'  
 Drlg. 8626' sh & 1m  
 Drlg. 9517' 1m, sh & cht  
 Drlg. 10,643' sdy 1m & sh  
 TD 11,769' sh & sdy 1m; Trip  
 Drlg. 12,168' sh & 1m  
 DST 11,727-921', open 2 hrs 45 mins  
 (2000' WB) GTS 30 min + Stabalized @  
 4100 MCFGPD thru 1" chk, rec 2000' GCM3 +  
 400' cond + 450' GCM, 1 hr 30 min ISIP 4033#  
 FP 928-1171#, 3 hrs FSIP 3660#

ROOSEVELT  
HUBBARD, J. M. CORP.

Prairie, S. NM Sec 20, T-8-S, R-36-E  
1 Petrofina-Federal Page 2

1-15-69

Continued

DST 11,982-12,008', open 35 min (2000' WB)  
rec WB + 60' Mud, NS, 1 hr ISIP 1572#, FP 935-  
931#, No FSIP  
Drilg. 12,678' sh  
Coring @ 12,948'  
Cored 12,873-907', no descr.  
Cored 12,907-928', no descr.  
TD 12,955' (corr); Prep Perf  
Cored 12,928-967', rec 19½', no descr.  
DST 12,867-967', open 6 hrs 42 mins (2000' WB)  
OTS 1 hr 41 mins, WBTS 1 hr 9 mins  
Flwd 9 BOPH + 9 BWBPH, rev out 152 BO + 5 BOCM +  
25 B sul salt wtr, 1 hr 30 min ISIP 4881#.  
FP 1959-4855#, 4 hr FSIP 4881#, BP 6816-6704#

1-20-69  
1-27-69

1-28-69

2-10-69

2-17-69

2-24-69  
3-3-69

3-6-69

TD 12,955'; Tstg  
Flwd 207.6 BO + 48.1 BW thru float shoe  
in 24 hrs  
TD 12,955'; PBD 12,913'; WO Pot  
PB to 12,913'  
Perf 12,867-885' w/4 SPF  
Acid (12,867-885') 500 gals  
Flwd 717 BOPD thru 15/64" chk. TP 225#  
TD 12,955'; PBD 12,913'; Comp.  
TD 12,955'; PBD 12,913'; COMPLETE  
LOG TOPS: Anhydrite 2275', San Andres 4137',  
Yess 5470', Tubb 6903', Abo 7712', Wolfcamp  
9048', Bough "C" 9621', Strawn 11,184',  
Atoka 11,418', Mississippian 12,216, Woodford  
12,690', Devonian 12,845'  
COMPLETION REPORTED.

**NEW MEXICO OIL CONSERVATION COMMISSION  
WELL LOCATION AND ACREAGE DEDICATION PLAT**

Form C-102  
Supersedes C-128  
Effective 1-1-66

All distances must be from the outer boundaries of the Section.

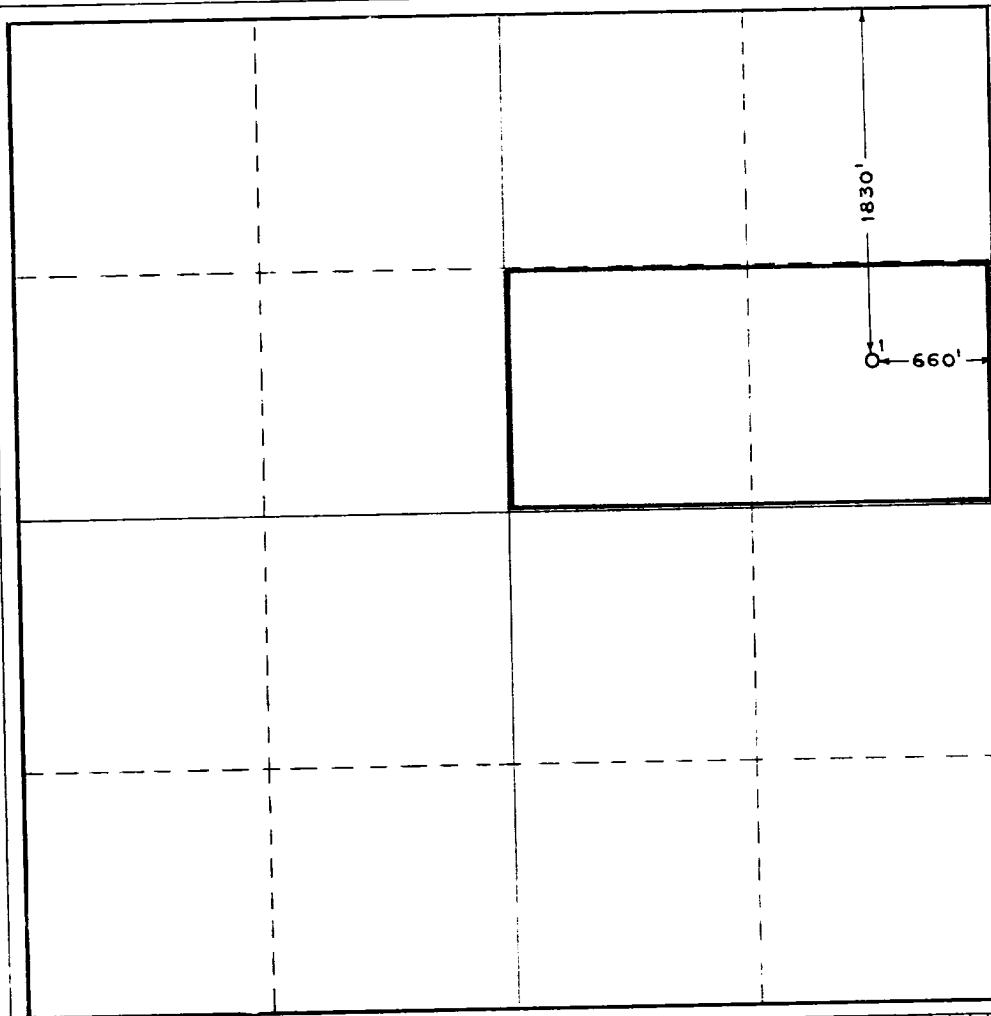
Operator <b>J.M. Huber Corporation</b>			Lease <b>Petrofina Federal</b>		Well No. <b>1</b>
Unit Letter <b>H</b>	Section <b>20</b>	Township <b>8-S</b>	Range <b>36-E</b>	County <b>Roosevelt</b>	
Actual Footage Location of Well:					
<b>1830</b> feet from the <b>North</b> line and		<b>660'</b> feet from the <b>East</b> line			
Ground Level Elev. <b>4112</b>	Producing Formation <b>Devonian</b>	Pool <b>South Prairie Devonian</b>		Dedicated Acreage: <b>80</b>	Acres

1. Outline the acreage dedicated to the subject well by colored pencil or hachure marks on the plat below.
2. If more than one lease is dedicated to the well, outline each and identify the ownership thereof (both as to working interest and royalty).
3. If more than one lease of different ownership is dedicated to the well, have the interests of all owners been consolidated by communitization, unitization, force-pooling, etc?

☐ Yes    ☐ No    If answer is "yes," type of consolidation \_\_\_\_\_

If answer is "no," list the owners and tract descriptions which have actually been consolidated. (Use reverse side of this form if necessary.) \_\_\_\_\_

No allowable will be assigned to the well until all interests have been consolidated (by communitization, unitization, forced-pooling, or otherwise) or until a non-standard unit, eliminating such interests, has been approved by the Commission.



**CERTIFICATION**

*I hereby certify that the information contained herein is true and complete to the best of my knowledge and belief.*

*Floyd L. Meade*

Name  
**Floyd L. Meade**

Position  
**District Production Supt.**

Company  
**J.M. Huber Corporation**

Date  
**February 18, 1969**

*I hereby certify that the well location shown on this plat was plotted from field notes of actual surveys made by me or under my supervision, and that the same is true and correct to the best of my knowledge and belief.*

Date Surveyed

Registered Professional Engineer  
and/or Land Surveyor

Certificate No.

