

OWWO

COUNTY ROOSEVELT FIELD Bluitt STATE NM 30-041-20240
 OPR UNION OIL CO. OF CALIFORNIA MAP
1 Federal "17"
Sec 17, T-8-S, R-38-E CO-ORD
660' FSL, 1980' FWL of Sec

		CLASS		OWOF	EL- 1984.8
Re-Cmp 7-24-70		FORMATION	DATUM	FORMATION	DATUM
CSC & SX - TUBING					
8 5/8" at 327' w/175 sx					
4 1/2" at 4790' w/300 sx.					
LOGS EL GR RA IND HC A					
		TD 4790'; PBD 4779'			
(San Andres) Perfs 4742-67 1/2' NO NEW POTENTIAL.					

Distribution limited and publication prohibited by subscribers' agreement.
 Reproduction rights reserved by Williams & Lee Scouting Service, Inc.

CONT. _____ PROP DEPTH 4759' TYPE WO
 DATE _____

F.R.C. 8-13-70; Opr's Elev. 3977' GL
 PD 4759' WO (San Andres)
 (Orig. comp 3-19-70 thru Perfs 4761-67½',
 OTD 4790', OPB 4779')
 8-11-70 TD 4790'; PBD 4779'; COMPLETE
 Perf @ 4742', 4743', 4745', 4749', 4750',
 4751', 4753', 4756', 4758', 4759' w/1 SFI
 Acid (4742-59') 2000 gals
 8-13-70 COMPLETION REPORTED

COUNTY	ROOSEVELT		FIELD	Bluitt		STATE	NM 30-041-20240	
OPR	UNION OIL CO. OF CALIFORNIA						MAP	
	1 Federal "17"							
	Sec 17, T-8-S, R-38-E						CO-ORD	
	660' FSL, 1980' FWL of Sec.							
	Spd 3-8-70						CLASS	
	Cmp 3-19-70							
	FORMATION		DATUM		FORMATION		DATUM	
CSG & SX - TUBING								
8 5/8" at 327' w/175 sx								
4 1/2" at 4790' w/300 sx								
LOGS EL GR RA IND HC A								
	TD 4790'		FBD 4779'					

IP(San Andres) Perfs 4761-67½' Flwd 217 BOPD. Potential based on 17 hr test thru 16/64" ch, GOR 462, Grav 25.1, CP pkr, TP 150#

Distribution limited and publication prohibited by subscribers' agreement.
Reproduction rights reserved by Williams & Lee Scouting Service, Inc.

CONT.	Sitton & Norton	PROP DEPTH 4900'	TYPE
DATE			

F.R. 12-2-69; Opr's Elev 3977' GL
PD 4900' - San Andres
Contr - Sitton & Norton

4-9-70 AMEND FIELD NAME: Formerly reported as
Bluitt, E.

3-10-70 Drlg. 320'

3-16-70 Drlg. 4350'

3-24-70 TD 4790', FBD 4779', COMPLETE (Hold of tops)
Perf @ 4761', 4762', 4763', 4764', 4766',
4767½' w/1 SPI
Acid (4761-67½') 620 gals

4-6-70 TD 4790', FBD 4779', COMPLETE
LOG TOPS: Rustler 2350', San Andres 3910',
Pi Marker 4453'

4-9-70 COMPLETION REPORTED

RECEIVED

APR 13 1970

OIL CONSERVATION COMM.
HOUSTON, TX. TX.

**NEW MEXICO OIL CONSERVATION COMMISSION
WELL LOCATION AND ACREAGE DEDICATION PLAT**

Form C-102
des C-128
Effective 1-1-65

All distances must be from the outer boundaries of the Section.

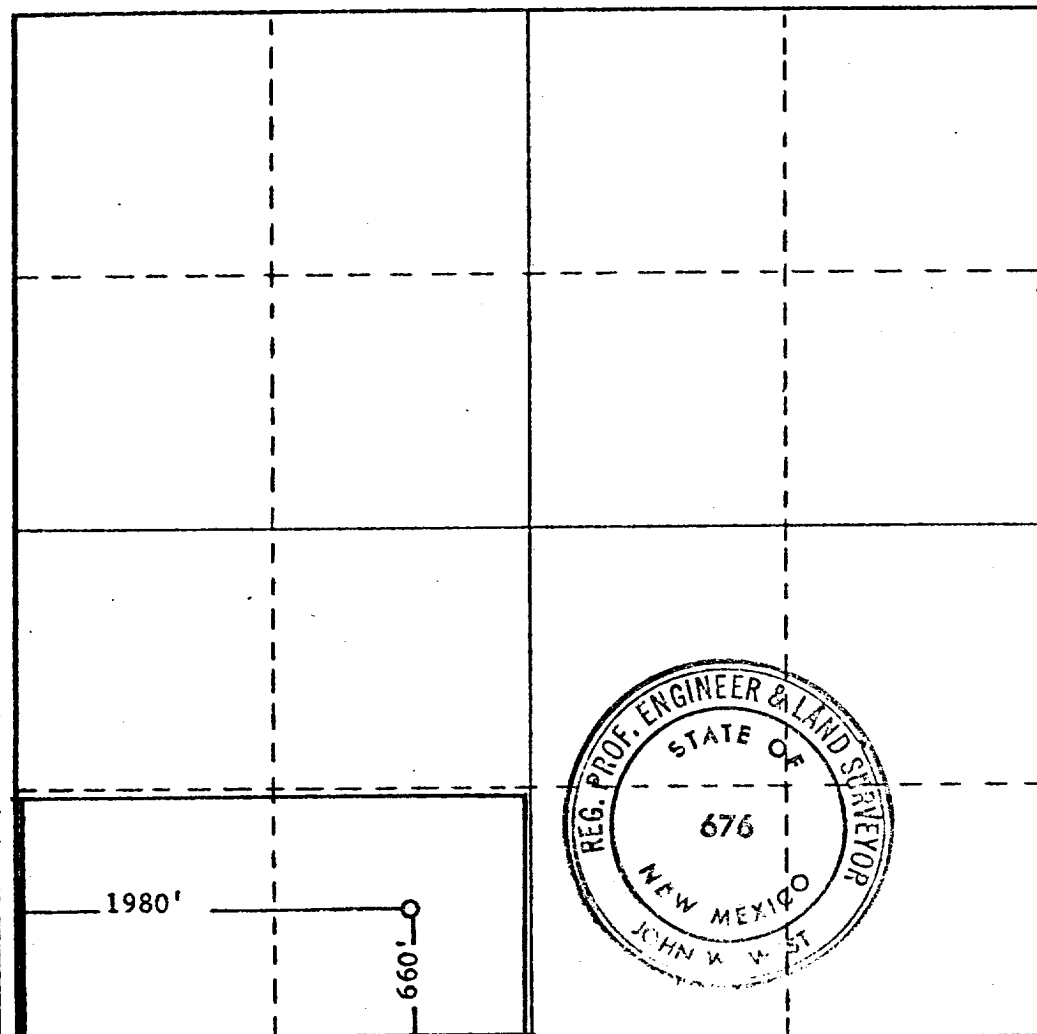
Operator UNION OIL COMPANY OF CALIFORNIA			Lease FEDERAL 17		Well No. 1
Unit Letter N	Section 17	Township 8 SOUTH	Range 38 EAST	County ROOSEVELT	
Actual Footage Location of Well: 660 feet from the SOUTH line and 1980 feet from the WEST line					
Ground Level Elev. 3977'	Producing Formation San Andres - Todd		Pool Bluitt San Andres Associated		Dedicated Acreage: 80 Acres

1. Outline the acreage dedicated to the subject well by colored pencil or hachure marks on the plat below.
2. If more than one lease is dedicated to the well, outline each and identify the ownership thereof (both as to working interest and royalty).
3. If more than one lease of different ownership is dedicated to the well, have the interests of all owners been consolidated by communitization, unitization, force-pooling, etc?

☐ Yes ☐ No If answer is "yes," type of consolidation _____

If answer is "no," list the owners and tract descriptions which have actually been consolidated. (Use reverse side of this form if necessary.) _____

No allowable will be assigned to the well until all interests have been consolidated (by communitization, unitization, forced-pooling, or otherwise) or until a non-standard unit, eliminating such interests, has been approved by the Commission.



CERTIFICATION

I hereby certify that the information contained herein is true and complete to the best of my knowledge and belief.

Name _____
 Position
District Production Supt.
 Company
Union Oil Company of Calif.
 Date
March 26, 1970

I hereby certify that the well location shown on this plat was plotted from field notes of actual surveys made by me or under my supervision, and that the same is true and correct to the best of my knowledge and belief.

NOVEMBER 18, 1969

Date Surveyed

Registered Professional Engineer
and/or Land Surveyor

John W. West
 Certificate No. **676**

0 330 660 990 1320 1650 1980 2310 2640 2000 1500 1000 500