

**NEW ICO OIL CONSERVATION COMMISSION
WELL LOCATION AND ACREAGE DEDICATION PLAT**

Form C-102
Supersedes C-128
Effective 1-1-65

All distances must be from the outer boundaries of the Section.

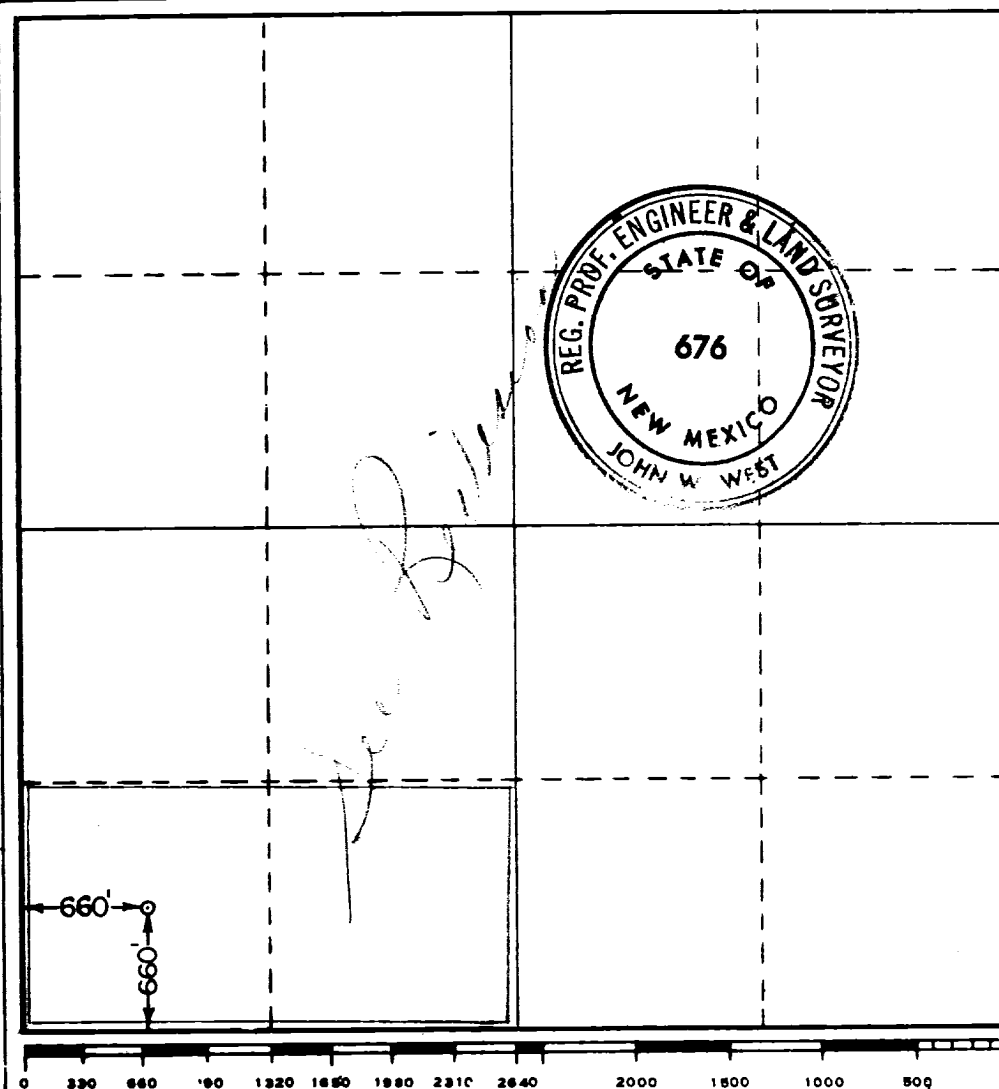
Operator EUGENE E. NEARBURG			Lease KIRKPATRICK		Well No. 5
Unit Letter M	Section 12	Township 8 SOUTH	Range 37 EAST	County ROOSEVELT	
Actual Footage Location of Well: 660 feet from the SOUTH line and 660 feet from the WEST line					
Ground Level Elev. 4019.8	Producing Formation San Andres (P2)	Pool Bluitt San Andres Assoc.	Dedicated Acreage: 80 Acres		

1. Outline the acreage dedicated to the subject well by colored pencil or hatchure marks on the plat below.
2. If more than one lease is dedicated to the well, outline each and identify the ownership thereof (both as to working interest and royalty).
3. If more than one lease of different ownership is dedicated to the well, have the interests of all owners been consolidated by communitization, unitization, force-pooling, etc?

☐ Yes ☐ No If answer is "yes," type of consolidation _____

If answer is "no," list the owners and tract descriptions which have actually been consolidated. (Use reverse side of this form if necessary.) _____

No allowable will be assigned to the well until all interests have been consolidated (by communitization, unitization, forced-pooling, or otherwise) or until a non-standard unit, eliminating such interests, has been approved by the Commission.



CERTIFICATION

I hereby certify that the information contained herein is true and complete to the best of my knowledge and belief.

James C. Blackmon
Name

James C. Blackmon
Position

Petroleum Engineer
Company

Eugene E. Nearburg
Date

January 5, 1970

I hereby certify that the well location shown on this plat was plotted from field notes of actual surveys made by me or under my supervision, and that the same is true and correct to the best of my knowledge and belief.

Date Surveyed
December 31, 1969

Registered Professional Engineer
and/or Land Surveyor

John W. West
Certificate No.

676