

COUNTY	ROOSEVELT		FIELD	Bluitt	STATE	NM	30-041-20272
OPR	UNION OIL CO. OF CALIFORNIA					MAP	
	1 Federal "17-A"						
	Sec 17, T-8-S, R-38-E					CO-ORD	
	1830' FSL, 1980' FEL of Sec.						
	Spd 6-27-70			CLASS		EL 39825	
	Cmp 7-15-70			FORMATION	DATUM	FORMATION	DATUM
CSG & SX - TUBING							
8 5/8" at 358' w/175 sx							
4 1/2" at 4801' w/400 sx							
LOGS EL GR RA IND HC A							
				TD 4801'	PBD 4779'		

IP (San Andres) Perfs 4754-4775' F 225 BOPD. Pct based on 24 hr test thru 16/64" chk.; GOR 470., Grav 25.4, CP pkr, TP 200#.

Distribution limited and publication prohibited by subscribers' agreement.  
Reproduction rights reserved by Williams & Lee Scouting Service, Inc.

CONT.	Sitton & Norton	PROP DEPTH	5000'	TYPE	RT
DATE					

	F.R. 7-6-70; Opr's Elev 3982' GL
	PD 5000' - RT - San Andres
	Contr. - Sitton & Norton
7-7-70	TD 4801' Prep to run csg
	No cores or DST's
7-13-70	TD 4801', PBD 4779', Prep to acid
	Perf (San Andres) @ 4754', 4756', 4758', 4760', 4764', 4768', 4773', 4774', 4775' w/1 SPI
7-21-70	TD 4801', PBD 4779', COMPLETE
	Acid (4754-75') 120 gals
	LOG TOPS: Anhydrite 2300', Yates 2698', San Andres 3915'
7-23-70	COMPLETION REPORTED

N. MEXICO OIL CONSERVATION COMMISS  
WELL LOCATION AND ACREAGE DEDICATION PLAT

**AMENDED**

Form C-102  
Supersedes C-128  
Effective 1-1-65

All distances must be from the outer boundaries of the Section

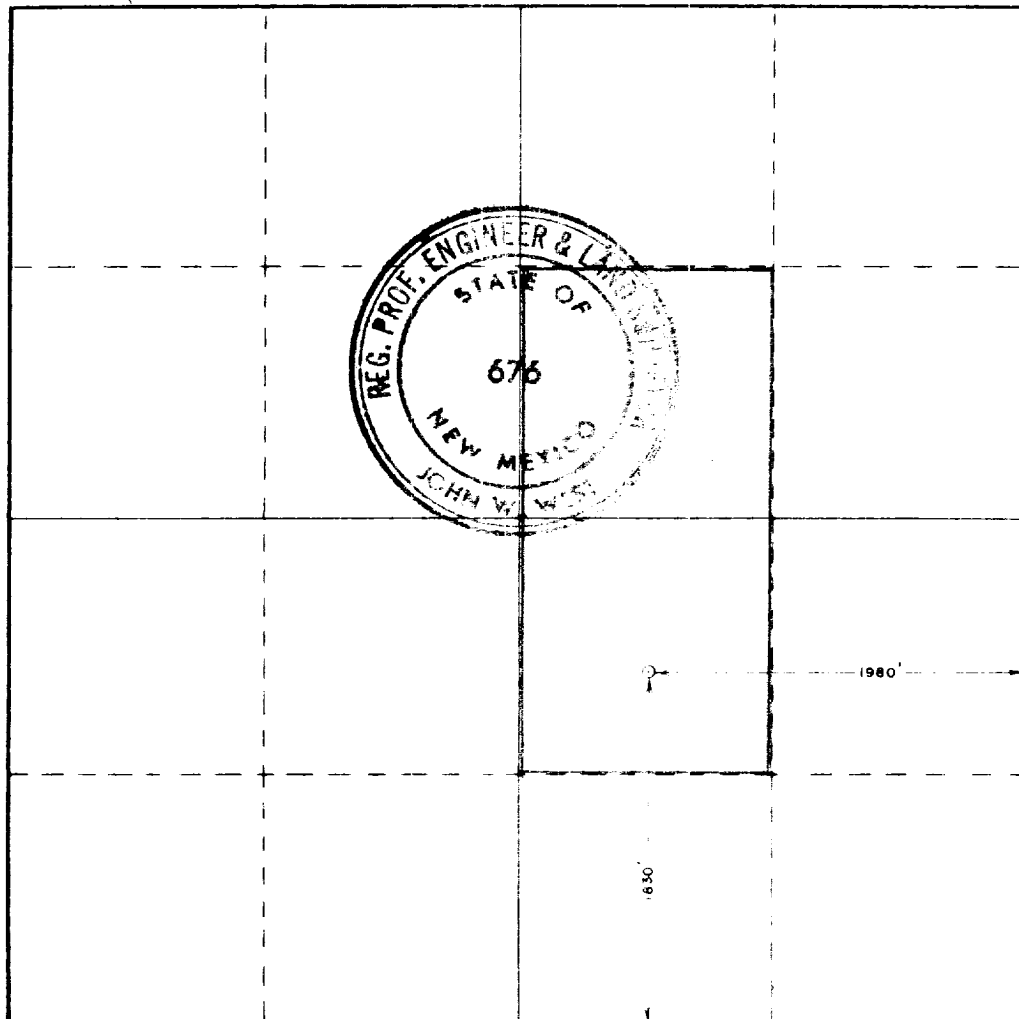
Operator <b>UNION OIL CO. OF CALIFORNIA</b>			Lease <b>FEDERAL "17" A</b>		Well No. <b>2 /</b>
Unit Letter <b>J</b>	Section <b>17</b>	Township <b>8 SOUTH</b>	Range <b>38 EAST</b>	County <b>ROOSEVELT</b>	
Actual Footage Location of Well: <b>1830</b> feet from the <b>SOUTH</b> line and <b>1980</b> feet from the <b>EAST</b> line					
Ground Level Elev. <b>3481.7</b>	Producing Formation <b>San Andres - Todd</b>		Pool <b>Bluitt San Andres Associated</b>		Dedicated Acreage: <b>80</b> Acres

1. Outline the acreage dedicated to the subject well by colored pencil or hatchure marks on the plat below.
2. If more than one lease is dedicated to the well, outline each and identify the ownership thereof (both as to working interest and royalty).
3. If more than one lease of different ownership is dedicated to the well, have the interests of all owners been consolidated by communitization, unitization, force-pooling, etc?

☐ Yes ☐ No If answer is "yes," type of consolidation \_\_\_\_\_

If answer is "no," list the owners and tract descriptions which have actually been consolidated. (Use reverse side of this form if necessary.) \_\_\_\_\_

No allowable will be assigned to the well until all interests have been consolidated (by communitization, unitization, forced-pooling, or otherwise) or until a non-standard unit, eliminating such interests, has been approved by the Commission.



CERTIFICATION

I hereby certify that the information contained herein is true and complete to the best of my knowledge and belief.

By: *[Signature]*  
District Production Supt.  
Union Oil Co. of California  
February 9, 1971

I hereby certify that the well location shown on this plat was plotted from field notes of actual surveys made by me or under my supervision, and that the same is true and correct to the best of my knowledge and belief.

JUNE 24, 1970

Date Surveyed

Registered Professional Engineer and Land Surveyor

*[Signature: John W. West]*  
Certificate No. **676**

