

NEW MEXICO OIL CONSERVATION COMMISSION
WELL LOCATION AND ACREAGE DEDICATION PLAT

Form C-102
Supersedes C-128
Effective 1-1-65

All distances must be from the outer boundaries of the Section.

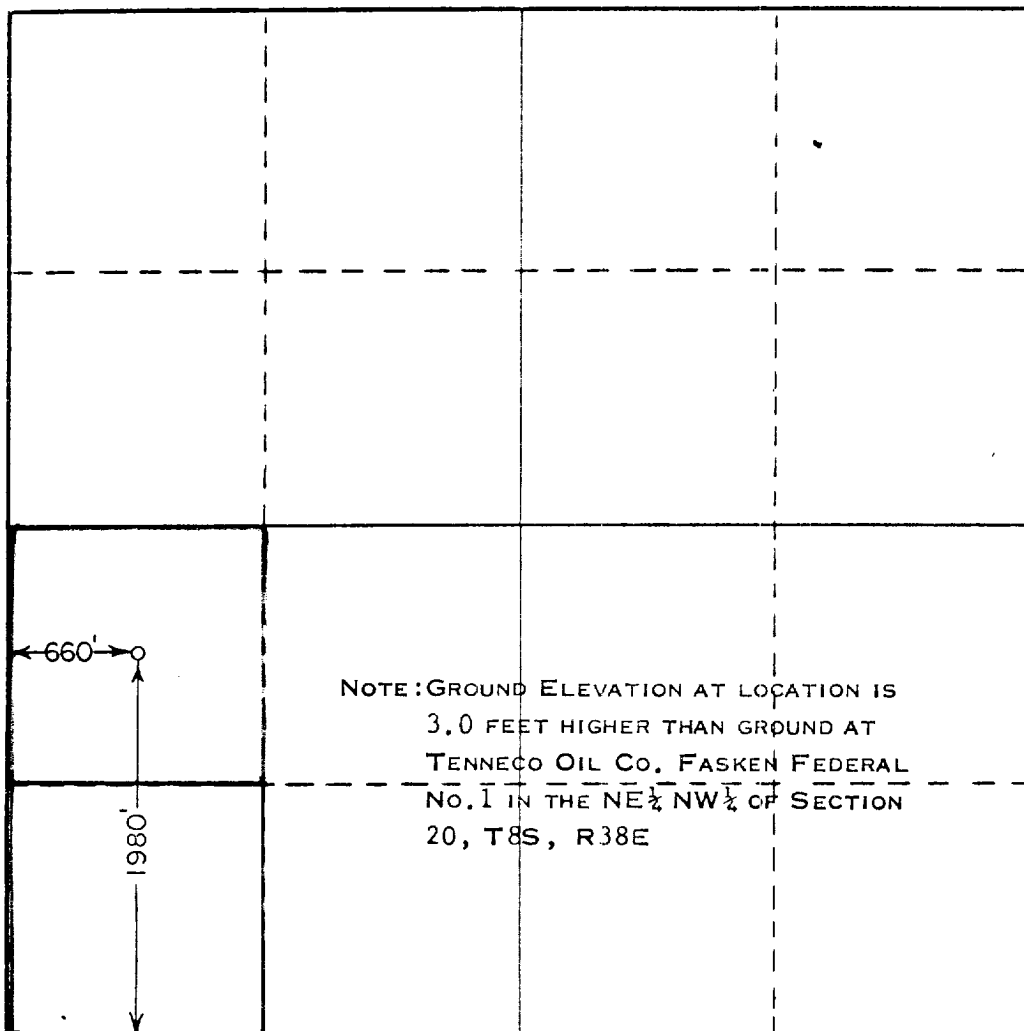
Operator CITIES SERVICE OIL CO.			Lease STATE "CO"		Well No. 1
Unit Letter L	Section 16	Township 8 SOUTH	Range 38 EAST	County ROOSEVELT	
Actual Footage Location of Well: 1980 feet from the SOUTH line and 660 feet from the WEST line					
Ground Level Elev. 3980 (Est)	Producing Formation SAN ANDRES		Pool BLUITT		Dedicated Acreage; 80 Acres

1. Outline the acreage dedicated to the subject well by colored pencil or hachure marks on the plat below.
2. If more than one lease is dedicated to the well, outline each and identify the ownership thereof (both as to working interest and royalty).
3. If more than one lease of different ownership is dedicated to the well, have the interests of all owners been consolidated by communitization, unitization, force-pooling, etc?

☐ Yes ☐ No If answer is "yes," type of consolidation _____

If answer is "no," list the owners and tract descriptions which have actually been consolidated. (Use reverse side of this form if necessary.) _____

No allowable will be assigned to the well until all interests have been consolidated (by communitization, unitization, forced-pooling, or otherwise) or until a non-standard unit, eliminating such interests, has been approved by the Commission.



CERTIFICATION

I hereby certify that the information contained herein is true and complete to the best of my knowledge and belief.

E. Y. Wilder

Name

E. Y. WILDER

Position

DISTRICT MANAGER

Company

CITIES SERVICE OIL COMPANY

Date

JULY 22, 1971

I hereby certify that the well location shown on this plat was plotted from field notes of actual surveys made by me or under my supervision, and that the same is true and correct to the best of my knowledge and belief.

Date Surveyed

JULY 21, 1971

Registered Professional Engineer and/or Land Surveyor

John W. West

Certificate No.

676



10



COUNTY ROOSEVELT FIELD Bluitt STATE NM 30-041-20325

OPR CITIES SERVICE OIL CO. MAP

1 State "CO"

Sec 16, T-8-S, R-38-E CO-ORD

1980' FSL, 660' FWL of Sec

Spd 7-27-71

Cmp 8-20-71

CSG & SX - TUBING

8 5/8" at 449' w/300 sx

4 1/2" at 4844' w/350 sx

LOGS EL GR RA IND HC A

TD 4844'; PBD 4825'

IP (San Andres) Perfs 4789-4814' P 16 BOPD + 60 BW. Pot based

on 24 hr test. GOR TSEM; Grav 25.9.

Distribution limited and publication prohibited by subscribers' agreement.
Reproduction rights reserved by Williams & Lee Scouting Service, Inc.

CONT. Cactus PROP DEPTH 4800' TYPE RT

DATE

9-9-71

8-2-71

8-9-71

8-16-71

F.R. 8-3-71; Opr's Elev. 3995' DF

PD 4800' RT (San Andres)

Contractor - Cactus

AMEND FIELD NAME: Formerly reported as
Undesignated.

Orig. 4452' lm

TD 4844'; MO Rot

TD 4844'; PBD 4825'; Swbg

Perf @ 4789', 4791', 4793', 4795', 4796', 4798',
4799', 4801', 4806', 4808', 4810', 4812', 4814'
w/1 SPI

Acid (4789-4814') 3000 gals

Swbd 6 BO + 219 BL & FW in 24 hrs

ROOSEVELT
CITIES SERVICE OIL CO.

Bluitt
#1 State "CO"

NM

Sec 16, T8S, R36E
Page #2

8-23-71 TD 4844'; PBD 4825'; TOP
Ppd 5 BO + 166 BW in 58 hrs (4789-4814')
8-30-71 TD 4844'; PBD 4825'; TO Pmp
Ppd 29 BO + 118 BW in 46 hrs
9-7-71 TD 4844'; PBD 4825'; COMPLETE
LOG TOPS: Yates 2708', Queen 3443', San
Andres 3966', P3 Zone 4788'
9-9-71 COMPLETION REPORTED