

5. OF COPIES RECEIVED	
DISTRIBUTION	
SANTA FE	
FILE	
U.S.G.S.	
LAND OFFICE	
OPERATOR	

# NEW MEXICO OIL CONSERVATION COMMISSION

Form C-101  
Revised 1-1-65

5A. Indicate Type of Lease	
STATE <input checked="" type="checkbox"/>	FEE <input type="checkbox"/>
5. State Oil & Gas Lease No.	
<b>K-1369</b>	

## APPLICATION FOR PERMIT TO DRILL, DEEPEN, OR PLUG BACK

1a. Type of Work		7. Unit Agreement Name	
b. Type of Well DRILL <input checked="" type="checkbox"/> DEEPEN <input type="checkbox"/> PLUG BACK <input type="checkbox"/>		8. Farm or Lease Name	
OIL WELL <input checked="" type="checkbox"/> GAS WELL <input type="checkbox"/> OTHER <input type="checkbox"/>		<b>Chaveroo Bough "C"</b>	
2. Name of Operator		9. Well No.	
<b>Skelly Oil Company</b>		<b>1</b>	
3. Address of Operator		10. Field and Pool, or Wildcat	
<b>P. O. Box 1351, Midland, Texas 79701</b>		<b>Wildcat</b>	
4. Location of Well		12. County	
UNIT LETTER <b>C</b> LOCATED <b>990</b> FEET FROM THE <b>North</b> LINE		<b>Roosevelt</b>	
AND <b>1650</b> FEET FROM THE <b>West</b> LINE OF SEC. <b>35</b> TWP. <b>7S</b> RGE. <b>33E</b> NMPM			
19. Proposed Depth		19A. Formation	20. Rotary or C.T.
<b>9800'</b>		<b>Atoka</b>	<b>Rotary</b>
21. Elevations (Show whether DF, RT, etc.)	21A. Kind & Status Plug. Bond	21B. Drilling Contractor	22. Approx. Date Work will start
<b>Unknown</b>	<b>Blanket Bond #1253688</b>	<b>To be selected</b>	<b>Immediately</b>

23.

**\$100,000 w/Fed. Ins. Co.**

### PROPOSED CASING AND CEMENT PROGRAM

SIZE OF HOLE	SIZE OF CASING	WEIGHT PER FOOT	SETTING DEPTH	SACKS OF CEMENT	EST. TOP
17-1/2"	13-3/8" OD	48#	375'	315	Surface
11"	8-5/8" OD	24# & 32#	4500'	1300	Surface
7-7/8"	5-1/2" OD	17#	9800'	825	5000'

The pump and plug process will be used in cementing all strings of casing. The 13-3/8" OD casing will be set at 375' and cemented to surface. The 8-5/8" OD casing will be set at approximately 4500' and cemented to surface. The 5-1/2" OD casing will be set at total depth and will be perforated approximately 9450' - 9478' to test the Atoka. If the test does not indicate a commercially economical well, the Bough "C" will be perforated at approximately 8570' - 8585' and tested.

NOTICE  
13/3/6

APPROVAL VALID  
FOR 90 DAYS UNLESS  
DRILLING COMMENCED,  
EXPIRES 1-1-72

IN ABOVE SPACE DESCRIBE PROPOSED PROGRAM: IF PROPOSAL IS TO DEEPEN OR PLUG BACK, GIVE DATA ON PRESENT PRODUCTIVE ZONE AND PROPOSED NEW PRODUCTIVE ZONE. GIVE BLOWOUT PREVENTER PROGRAM, IF ANY.

I hereby certify that the information above is true and complete to the best of my knowledge and belief.

Signed **(SIGNED) CHARLES J. LOVE** Title **District Production Manager** Date **Sept. 29, 1971**

(This space for State Use)

APPROVED BY  TITLE **SUPERVISOR DISTRICT I** DATE **OCT 1 1971**

CONDITIONS OF APPROVAL, IF ANY:

RECEIVED

SEP 3 1971

OIL CONSERVATION COMM.  
HOBBS, N. M.

SEP 1 1961

**NEW MEXICO OIL CONSERVATION COMMISSION  
WELL LOCATION AND ACREAGE DEDICATION PLAT**

Form C-102  
Supersedes C-128  
Effective 1-1-65

All distances must be from the outer boundaries of the Section

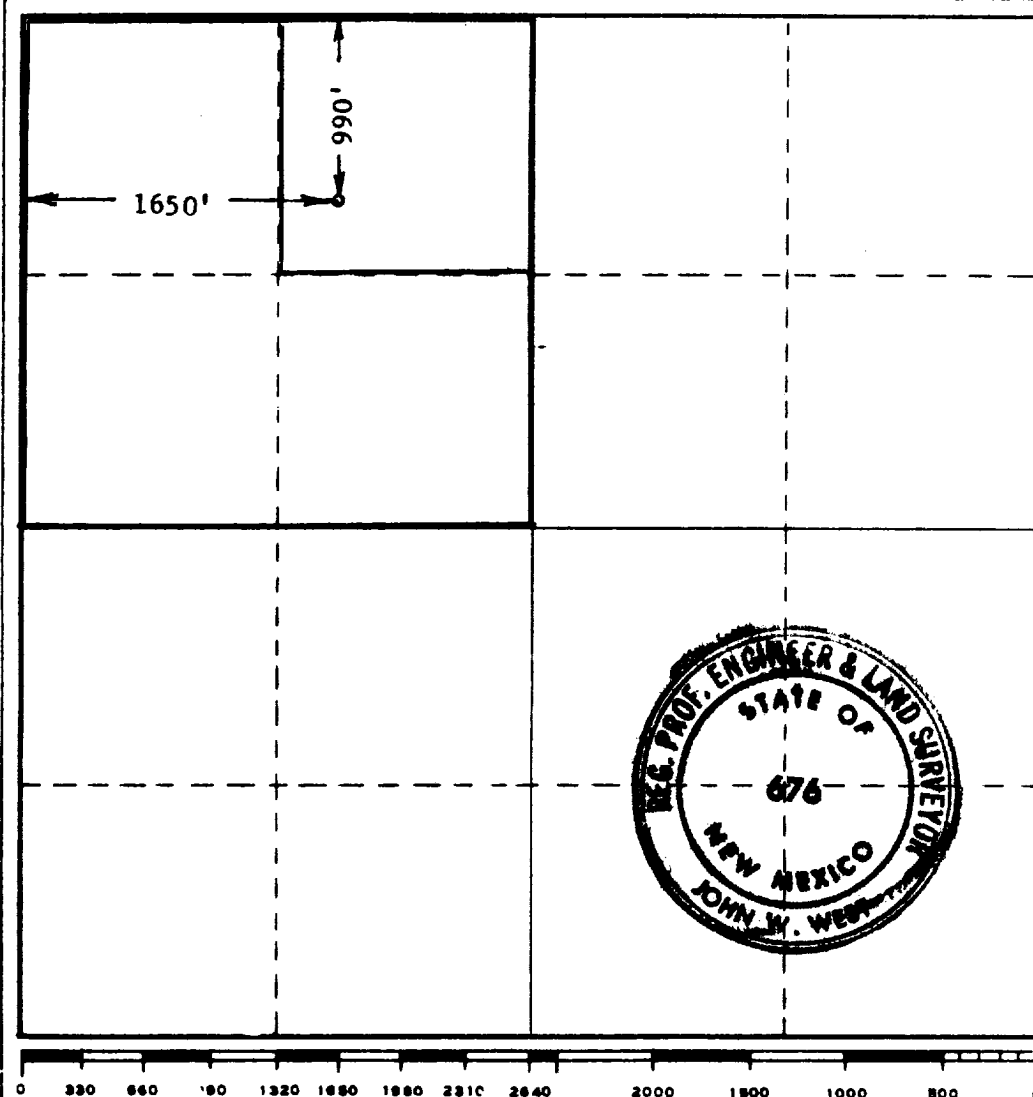
Operator <b>SKELLY OIL CO.</b>			Lease <b>CHAVEROO BOUGH "C"</b>		Well No. <b>1</b>
Unit Letter <b>C</b>	Section <b>35</b>	Township <b>7 SOUTH</b>	Range <b>33 EAST</b>	County <b>ROOSEVELT</b>	
Actual Footage Location of Well: <b>990</b> feet from the <b>NORTH</b> line and <b>1650</b> feet from the <b>WEST</b> line					
Ground Level Elev. <b>Unknown</b>	Producing Formation <b>Atoka</b>		Pool <b>Wildcat</b>	Dedicated Acreage: <b>40</b> <del>160</del> Acres	

1. Outline the acreage dedicated to the subject well by colored pencil or hachure marks on the plat below.
2. If more than one lease is dedicated to the well, outline each and identify the ownership thereof (both as to working interest and royalty).
3. If more than one lease of different ownership is dedicated to the well, have the interests of all owners been consolidated by communitization, unitization, force-pooling, etc?

☐ Yes ☐ No If answer is "yes," type of consolidation \_\_\_\_\_

If answer is "no," list the owners and tract descriptions which have actually been consolidated. (Use reverse side of this form if necessary.) \_\_\_\_\_

No allowable will be assigned to the well until all interests have been consolidated (by communitization, unitization, forced-pooling, or otherwise) or until a non-standard unit, eliminating such interests, has been approved by the Commission.



**CERTIFICATION**

I hereby certify that the information contained herein is true and complete to the best of my knowledge and belief.

Name

*C. J. Love*  
**C. J. Love**

Position

**District Production Manager**

Company

**Skelly Oil Company**

Date

**September 28, 1971**

I hereby certify that the well location shown on this plat was plotted from field notes of actual surveys made by me or under my supervision, and that the same is true and correct to the best of my knowledge and belief.

Date Surveyed

**SEPTEMBER 25, 1971**

Registered Professional Engineer and/or Land Surveyor

*John W. West*  
Certificate No. **676**

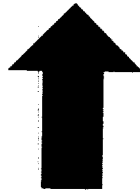
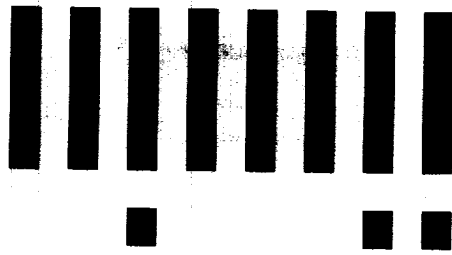
0 320 640 960 1280 1600 1920 2240 2560 2880 3200 3520 3840 4160 4480 4800 5120 5440 5760 6080 6400

173

RECEIVED

SEP 5 1971

OIL CONSERVATION COMM,  
HOBBS, N. M.



**LTR**



**Job separation sheet**



COUNTY	ROOSEVELT	FIELD	Wildcat	STATE	NM	30-041-20333
OPR	SKELLY OIL CO.			MAP		
1 Chaveroo - Bough "C"						
Sec 35, T-7-S, R-33-E						
990' FNL, 1650' FWL of Sec						
Spd 10-14-71						
Cmp 12-14-71						
				CLASS	EL 4382 2	
				FORMATION	DATUM	
CSG & SX - TUBING						
13 3/8" at 400' w/400 sx						
8 5/8" at 4500' w/800 sx						
LOGS EL GR RA IND HC A						
				TD 10,020'		
PLUGGED & ABANDONED						

Distribution limited and publication prohibited by subscribers' agreement.  
Reproduction rights reserved by Williams & Lee Scouting Service, Inc.

CONT.	Hondo	PROP DEPTH	9800'	TYPE	RT
DATE					

F.R. 10-5-71; Opr's Elev. 4382' DF  
PD 9800' RT (Atoka)  
Contractor - Hondo  
10-18-71 Drlg. 3285'  
10-25-71 TD 4500'; Fshg  
Attempted to Run 8 5/8" casing & Casing parted  
11-1-71 TD 4500'; Fshg  
11-8-71 Drlg. 5825'  
11-15-71 Drlg. 7880'  
11-19-71 Drlg. 8352'  
11-29-71 Drlg. 9314'  
DST (Bough "B") 8671-95', open 1 hr 15 mins,  
rec 1700' gas in DP + 4490' sli GC salt wtr +  
210' DM, 1 hr ISIP 2799#, FP 1611-2711#,  
2 hr FSIP 2711#, HP 4804-4440', BH Temp 138 deg

ROOSEVELT  
SKELLY OIL CO.

Wildcat NM Sec 35, T7S, R33E  
1 Chavero - Bough "C" Page #2

11-29-71

Continued

DST (Bough "C") 8709-35', open 1 hr 20 mins,  
rec 60' DM, NS, 1 hr FSIP 230#, FP 46-46#,  
2 hr FSIP 92#, HP 4718-4622#  
DST (Bough "D") 8737-8810', open 1 hr 20 mins,  
rec 90' DM, NS, 1 hr FSIP 2997#, FP 94-118#,  
2 hr FSIP 3000#, HP 4447-4424', BH Temp 140 deg  
DST (Cisco) 8930-52', open 1 hr 15 mins,  
rec 70' DM, NS, 1 hr FSIP 3301#, FP 46-46#,  
2 hr FSIP 2904#, HP 4713-4668#, BH Temp 140 deg  
Drlg. 9893'

12-6-71

DST (Atoka) 9560-9680', open 1 hr 20 mins,  
rec 40' DM, 1 hr FSIP 92#, FP 46-46#,  
2 hr FSIP 92#, HP 4986-4940#

12-6-71

Continued

DST (Atoka) 9684-9800', open 1 hr 20 mins,  
rec 320' DM, 1 hr FSIP 2559#, FP 385-428#,  
2 hr FSIP 2665#, HP 5042-5021#

12-13-71

TD 10,020'; Prep P&A  
Ran Logs to TD

12-20-71

No Tests or Cores at TD  
TD 10,020'; PLUGGED & ABANDONED  
LOG TOPS: Anhydrite 1803', Salt 1885', Yates  
2292', Queen 2952', Penrose 3068', San Andres  
3443', Pi Marker 3996', Glorieta 4772',  
Clearfork 3530', Tubb 5285', Abo 7135',  
Pennsylvanian XX 8147', Three Brothers 8436',  
Bough "A" 8619', Bough "B" 8646', Bough "C"  
8682', Bough "D" 8719', Cisco 8780', Canyon  
9008', Strawn 9225', Atoka 9498', Mississippian  
Lime 9989'

12-23-71

COMPLETION REPORTED