

UNITED STATES
DEPARTMENT OF THE INTERIOR
GEOLOGICAL SURVEY

30-141-2-267
5. LEASE DESIGNATION AND SERIAL NO.

NM-1737

6. IF INDIAN, ALLOTTEE OR TRIBE NAME

7. UNIT AGREEMENT NAME

8. FARM OR LEASE NAME

Federal "7"

9. WELL NO.

1

10. FIELD AND POOL, OR WILDCAT

Bluitt ~~UNDESIGNATED~~ Andres Assoc.

11. SEC., T., R., M., OR BLK.
AND SURVEY OR AREA

Sec. 7, T-8S, R-38E

12. COUNTY OR PARISH 13. STATE

Roosevelt

N.M.

APPLICATION FOR PERMIT TO DRILL, DEEPEN, OR PLUG BACK

1a. TYPE OF WORK

DRILL ☒

DEEPEN ☐

PLUG BACK ☐

b. TYPE OF WELL

OIL
WELL ☒

GAS
WELL ☐

OTHER

SINGLE
ZONE ☒

MULTIPLE
ZONE ☐

2. NAME OF OPERATOR

Union Oil Company of California

3. ADDRESS OF OPERATOR

P.O. Box 671 - Midland, Texas 79701

4. LOCATION OF WELL (Report location clearly and in accordance with any State requirements.)*

At surface

1980' FNL & 660' FEL

At proposed prod. zone

14. DISTANCE IN MILES AND DIRECTION FROM NEAREST TOWN OR POST OFFICE*

10 miles east of Milnesand

15. DISTANCE FROM PROPOSED*

LOCATION TO NEAREST
PROPERTY OR LEASE LINE, FT.
(Also to nearest drlg. unit line, if any)

660'

16. NO. OF ACRES IN LEASE

80

17. NO. OF ACRES ASSIGNED
TO THIS WELL

80

18. DISTANCE FROM PROPOSED LOCATION*

TO NEAREST WELL, DRILLING, COMPLETED,
OR APPLIED FOR, ON THIS LEASE, FT.

-

19. PROPOSED DEPTH

4800'

20. ROTARY OR CABLE TOOLS

Rotary

21. ELEVATIONS (Show whether DF, RT, GR, etc.)

4007.9 GR

22. APPROX. DATE WORK WILL START*

On approval

23.

PROPOSED CASING AND CEMENTING PROGRAM

SIZE OF HOLE	SIZE OF CASING	WEIGHT PER FOOT	SETTING DEPTH	QUANTITY OF CEMENT
11"	8-5/8"	24	350'	150 sx - circulate to surface
7-7/8"	4 1/2"	9.5	4800'	250 sx

Hydraulic B.O.P.

IN ABOVE SPACE DESCRIBE PROPOSED PROGRAM: If proposal is to deepen or plug back, give data on present productive zone and proposed new productive zone. If proposal is to drill or deepen directionally, give pertinent data on subsurface locations and measured and true vertical depths. Give blowout preventer program, if any.

24.

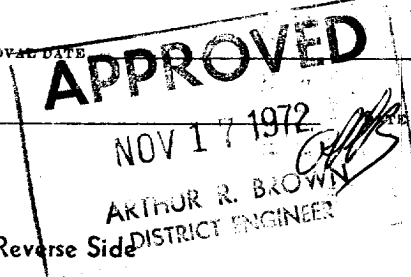
SIGNED _____ TITLE District Drilling Supt. DATE Nov. 10, 1972

(This space for Federal or State office use)

PERMIT NO. _____ APPROVAL DATE _____

APPROVED BY _____ TITLE _____

CONDITIONS OF APPROVAL, IF ANY:



*See Instructions On Reverse Side

RECEIVED

NOV 21 1972

**OIL CONSERVATION COMM.
HOBBS, N. M.**

**NEW MEXICO OIL CONSERVATION COMMISSION
WELL LOCATION AND ACREAGE DEDICATION PLAT**

Form C-102
Supersedes C-130
Effective 1-1-65

All distances must be from the outer boundaries of the Section.

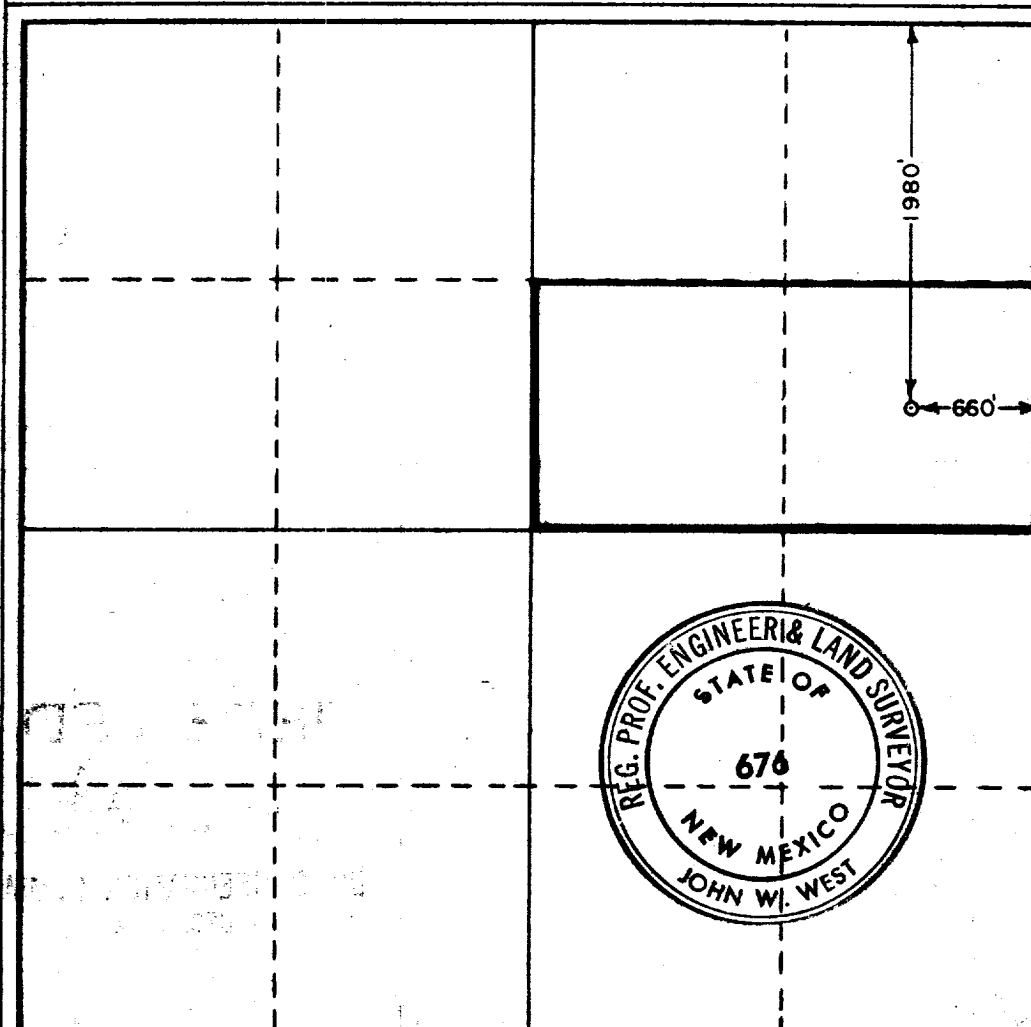
Operator UNION OIL CO. OF CALIFORNIA			Lease FEDERAL 7		Well No. 1
Unit Letter H	Section 7	Township 8 SOUTH	Range 38 EAST	County ROOSEVELT	
Actual Footage Location of Well: 1980 feet from the NORTH line and 660 feet from the EAST line					
Ground Level Elev. 4007.9	Producing Formation Todd		Pool Bluitt UNDESIGNATED Assoc.	Dedicated Acreage 80 Acres	

1. Outline the acreage dedicated to the subject well by colored pencil or hatchure marks on the plat below.
2. If more than one lease is dedicated to the well, outline each and identify the ownership thereof (both as to working interest and royalty).
3. If more than one lease of different ownership is dedicated to the well, have the interests of all owners been consolidated by communitization, unitization, force-pooling, etc?

☐ Yes ☐ No If answer is "yes," type of consolidation _____

If answer is "no," list the owners and tract descriptions which have actually been consolidated. (Use reverse side of this form if necessary.) _____

No allowable will be assigned to the well until all interests have been consolidated (by communitization, unitization, forced-pooling, or otherwise) or until a non-standard unit, eliminating such interests, has been approved by the Commission.



CERTIFICATION

I hereby certify that the information contained herein is true and complete to the best of my knowledge and belief.

Name _____
 Position
District Drilling Supt.
 Company
Union Oil Co. of California
 Date
Nov. 10, 1972

I hereby certify that the well location shown on this plat was plotted from field notes of actual surveys made by me or under my supervision, and that the same is true and correct to the best of my knowledge and belief.

Date Surveyed
NOVEMBER 2, 1972
 Registered Professional Engineer and/or Land Surveyor

John W. West
 Certificate No. **676**



RECEIVED

NOV 21 1972

RECEIVED

RECEIVED

NOV 21 1972

OIL CONSERVATION COMM.
HOBBS, N. M.