

(May 1963)

SUBMIT IN TRIPLICATE*

(Other instructions on reverse)

Form approved.
Budget Bureau No. 42-R1425.

**UNITED STATES
DEPARTMENT OF THE INTERIOR
GEOLOGICAL SURVEY**

APPLICATION FOR PERMIT TO DRILL, DEEPEN, OR PLUG BACK

5. LEASE DESIGNATION AND SERIAL NO.

NM 0559817

6. IF INDIAN, ALLOTTEE OR TRIBE NAME

None

7. UNIT AGREEMENT NAME

None

8. FARM OR LEASE NAME

U.S.A.

9. WELL NO.

2

10. FIELD AND POOL, OR WILDCAT

Undesignated

11. SEC., T., B., M., OR BLE.
AND SURVEY OR AREA

Sec. 5, T8S, R38E

12. COUNTY OR PARISH

13. STATE

Roosevelt

New Mexico

1a. TYPE OF WORK

DRILL ☒DEEPEN ☐PLUG BACK ☐

b. TYPE OF WELL

OIL
WELL ☒GAS
WELL ☐

OTHER

SINGLE
ZONE ☐MULTIPLE
ZONE ☐

2. NAME OF OPERATOR

Century Petroleum Ltd.

3. ADDRESS OF OPERATOR

1616 Oil and Gas Building, Fort Worth, Texas 76102

4. LOCATION OF WELL (Report location clearly and in accordance with any State requirements.)*

At surface

1980' FNL & 1980' FEL of Sec. 5, T8S, R38E, Roosevelt Co., New Mexico

At proposed prod. zone

P-1 and P-2 Todd zone of San Andres

14. DISTANCE IN MILES AND DIRECTION FROM NEAREST TOWN OR POST OFFICE*

2 miles E of Milnesand

15. DISTANCE FROM PROPOSED*

LOCATION TO NEAREST
PROPERTY OR LEASE LINE, FT.
(Also to nearest drlg. unit line, if any)

660'

16. NO. OF ACRES IN LEASE

600.58

17. NO. OF ACRES ASSIGNED
TO THIS WELL

80

18. DISTANCE FROM PROPOSED LOCATION*

TO NEAREST WELL, DRILLING, COMPLETED,
OR APPLIED FOR, ON THIS LEASE, FT.

2000'

19. PROPOSED DEPTH

4800'

20. ROTARY OR CABLE TOOLS

Rotary

21. ELEVATIONS (Show whether DF, RT, GR, etc.)

3992.4 GR

22. APPROX. DATE WORK WILL START*

October 1, 1973

PROPOSED CASING AND CEMENTING PROGRAM

SIZE OF HOLE	SIZE OF CASING	WEIGHT PER FOOT	SETTING DEPTH	QUANTITY OF CEMENT
10 3/4"	8 5/8"	20#	350'	225- 300 sx
7 7/8"	4 1/2"	9.5#		300 sx

1. Prepare location as shown on attached plats

2. Drill 10 3/4" hole to 350'. Set 8 5/8" W-40 20# casing and cement W/300 sx of Class "X" H" cement with 2% CC. WOC 12 Hrs.

3. Install 10" 900 Series Hydraulic operated Shaeffer BOP's W/4 1/2" pipe rams.

4. Drill 7 7/8" hole to TD 4800'. Set 4 1/2" K55 9.5# casing & cement #/300 sx of Class C preceded by 50 gal Mud Flush.

5. Set stock tanks and production facilities as shown on Plat #2.

Water: (a) Fresh water utilized in drilling operations will be purchased by Ainsworth Cattle Company and stored in steel tank.

(b) Salt water produced, if any, will be separated from oil production and stored in location in steel welded tank and hauled from the lease by transport truck to a commercial disposal facility near Crossroads, New Mexico.

IN ABOVE SPACE DESCRIBE PROPOSED PROGRAM: If proposal is to deepen or plug back, give data on present productive zone and proposed new productive zone. If proposal is to drill or deepen directionally, give pertinent data on subsurface locations and measured and true vertical depths. Give blowout preventer program, if any.

21.

SIGNED

TITLE

Pet. Engineer

DATE 9/14/73

(This space for Federal or State office use)

PERMIT NO.

APPROVAL DATE

APPROVED BY

TITLE

CONDITIONS OF APPROVAL, IF ANY:

APPROVED

SEP 21 1973

ARTHUR R. BROWN
DISTRICT ENGINEER

*See Instructions On Reverse Side

WELL LOCATION AND ACREAGE DEDICATION PLAT

Supersedes E-123
Effective 1-1-65

All measurements must be from the outer boundaries of the Se

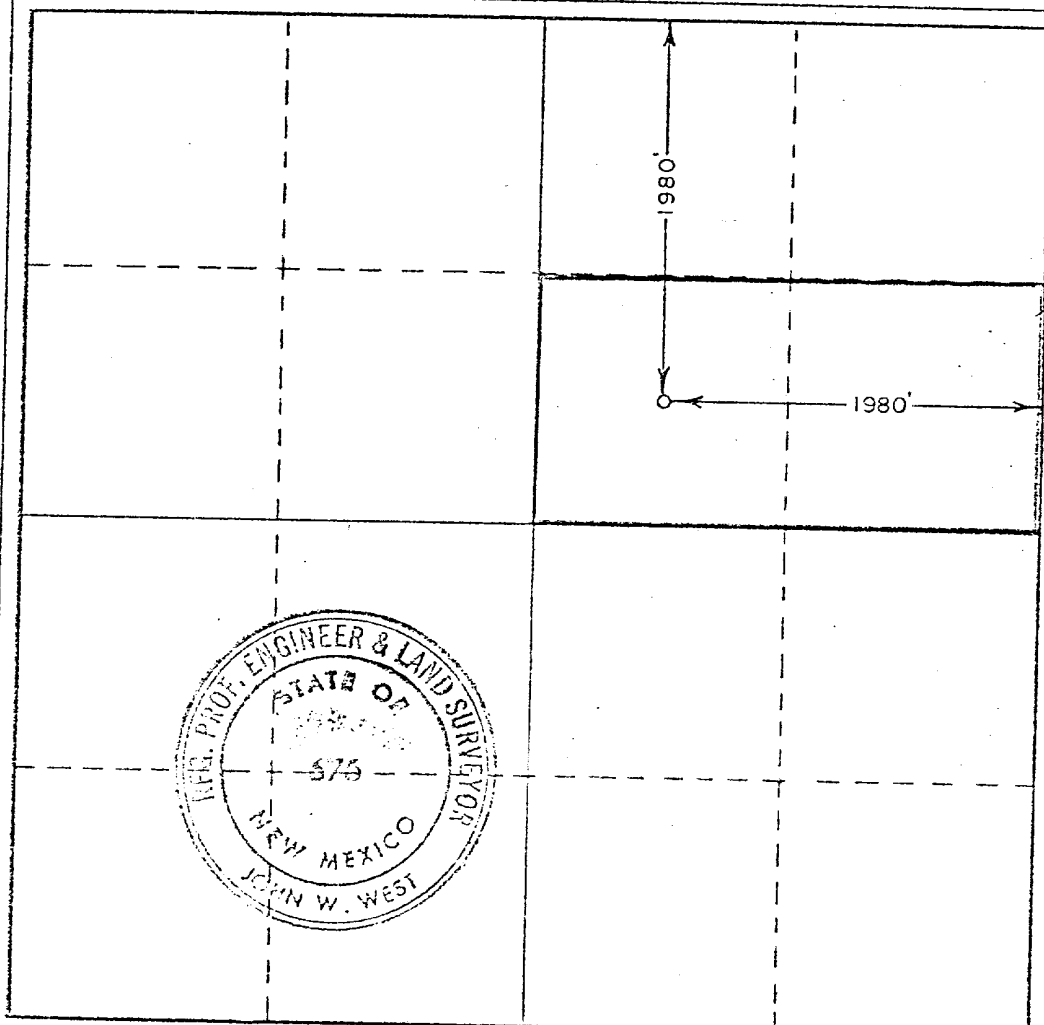
Operator CENTURY PETROLEUM, LTD.			Lease U.S.A.		Well No. 2
Unit Letter G	Section 5	Township 8 SOUTH	Range 38 EAST	County ROOSEVELT	
Actual Footage Location of Well: 1980 feet from the NORTH line and 1980 feet from the EAST line					
Ground Level Elev. 3422.4	Producing Formation		Pool	Dedicated Acreage: Acres	

1. Outline the acreage dedicated to the subject well by colored pencil or hatchure marks on the plat below.
2. If more than one lease is dedicated to the well, outline each and identify the ownership thereof (both as to working interest and royalty).
3. If more than one lease of different ownership is dedicated to the well, have the interests of all owners been consolidated by communitization, unitization, force-pooling, etc?

☐ Yes ☐ No If answer is "yes," type of consolidation _____

If answer is "no," list the owners and tract descriptions which have actually been consolidated. (Use reverse side of this form if necessary.) _____

No allowable will be assigned to the well until all interests have been consolidated (by communitization, unitization, forced-pooling, or otherwise) or until a non-standard unit, eliminating such interests, has been approved by the Commission.



CERTIFICATION

I hereby certify that the information contained herein is true and complete to the best of my knowledge and belief.

Name *[Signature]* **Petroleum Engineer**

Position **Century Petroleum Ltd.**

Company **1616 Oil and Gas Bldg.
Fort Worth, Texas 761**

Date **September 14, 1973**

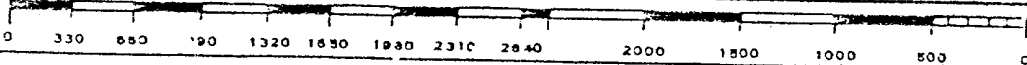
I hereby certify that the well location shown on this plat was plotted from field notes of actual surveys made by me or under my supervision, and that the same is true and correct to the best of my knowledge and belief.

Date Surveyed

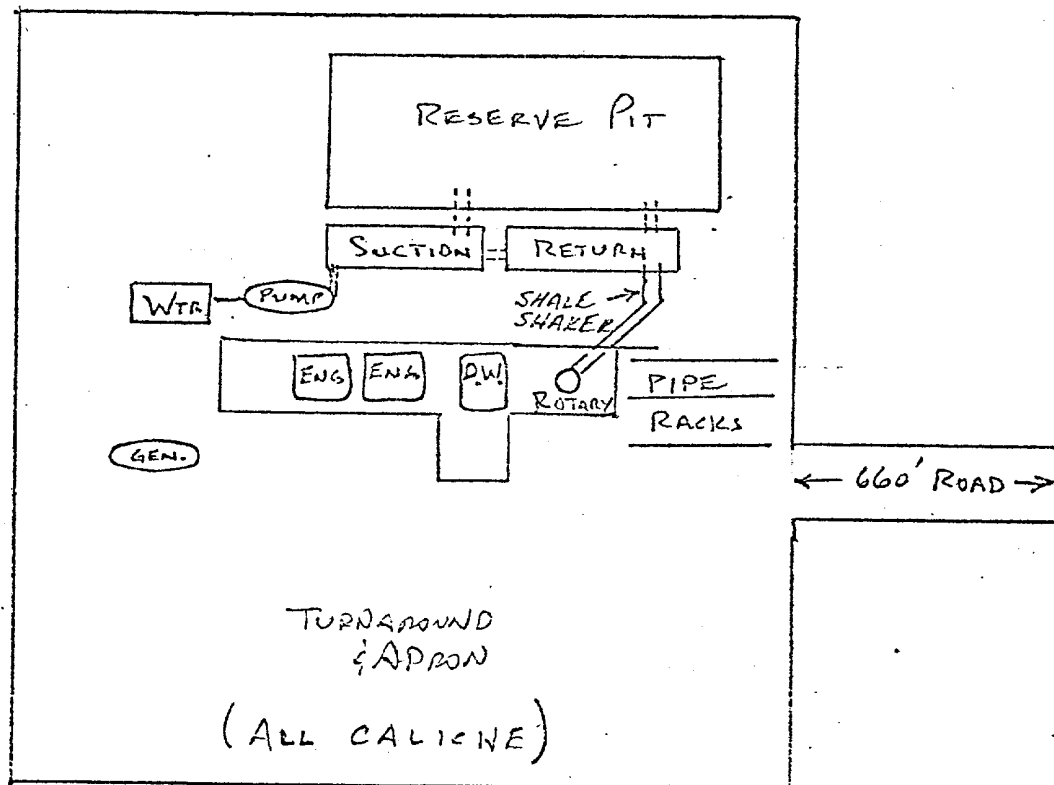
SEPTEMBER 9, 1973

Registered Professional Engineer and/or Land Surveyor

[Signature]
Certificate No. **676**



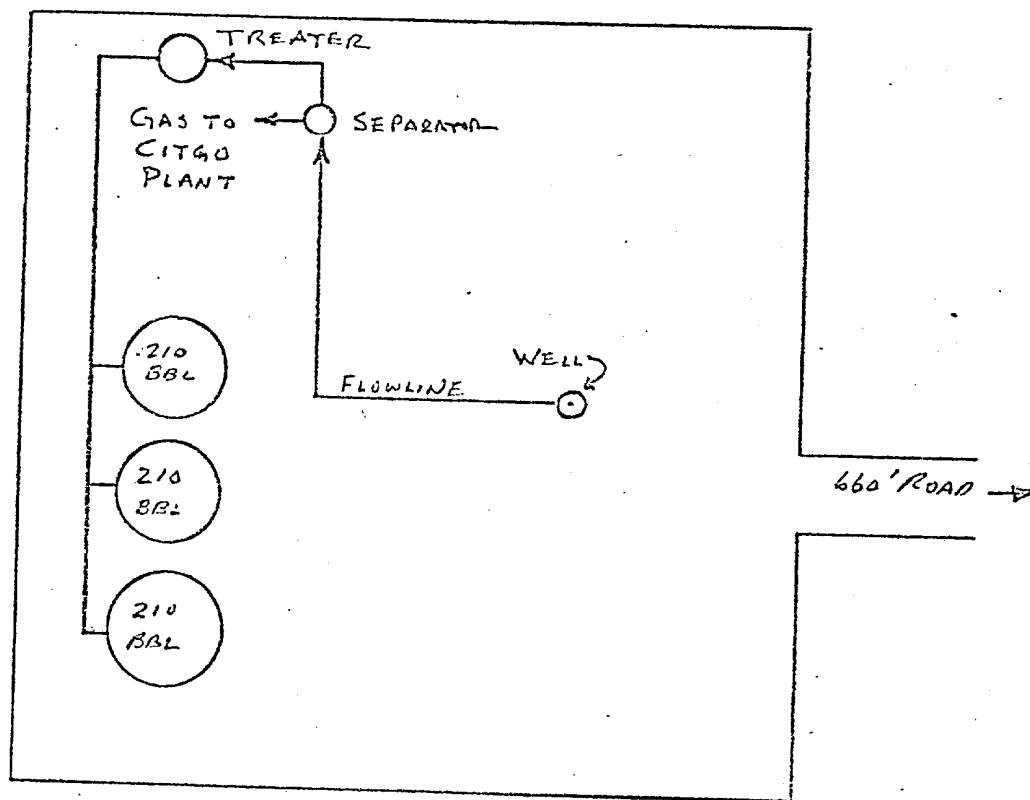
PLAT SHOWING PROP.
LAYOUT FOR R14,
U.S.A #2



PLAT # 1

PROPOSED LOCATION LAYOUT
CACTUS DRILLING CO.

BLUETT SA. ASSOC. — ROOSEVELT CO. N. M.



PLAT # 2

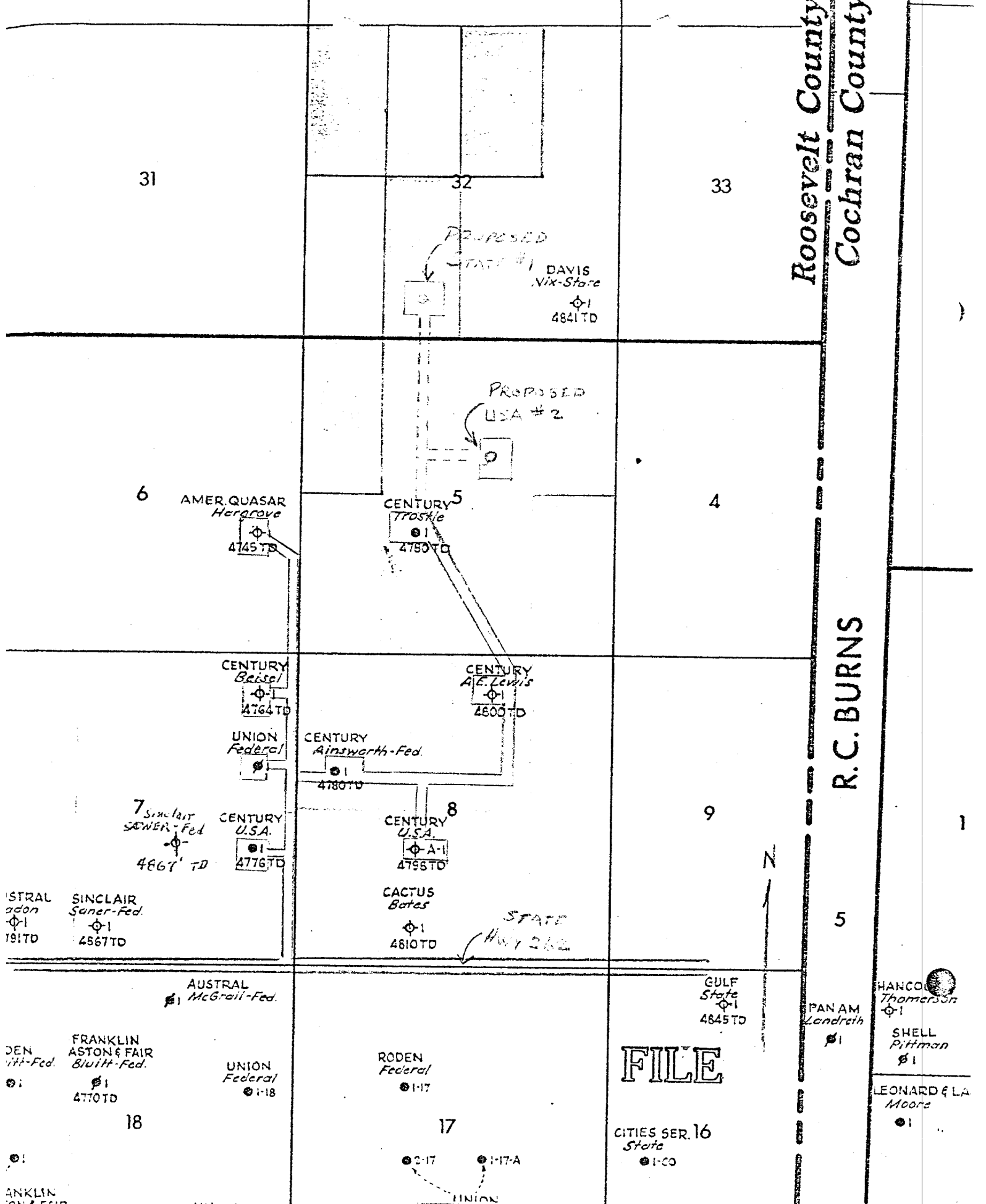
PROPOSED PRODUCTION FACILITIES
#2 USA NM 0559817

CENTURY PETROLEUM LTD.

BLUETT SA, ASSOC. - ROOSEVELT Co, N.M.

Roosevelt County
Cochran County

R.C. BURNS



CENTURY PETROLEUM, LTD.

ROOSEVELT CO., NEW MEXICO
Scale 1" = 2000'

== PRESENT ROADS
--- PROPOSED ROADS