

NEW MEXICO OIL CONSERVATION COMMISSION
WELL LOCATION AND ACREAGE DEDICATION PLAT

Form C-112
Supersedes C-128
Effective 1-1-65

All distances must be from the outer boundaries of the Section

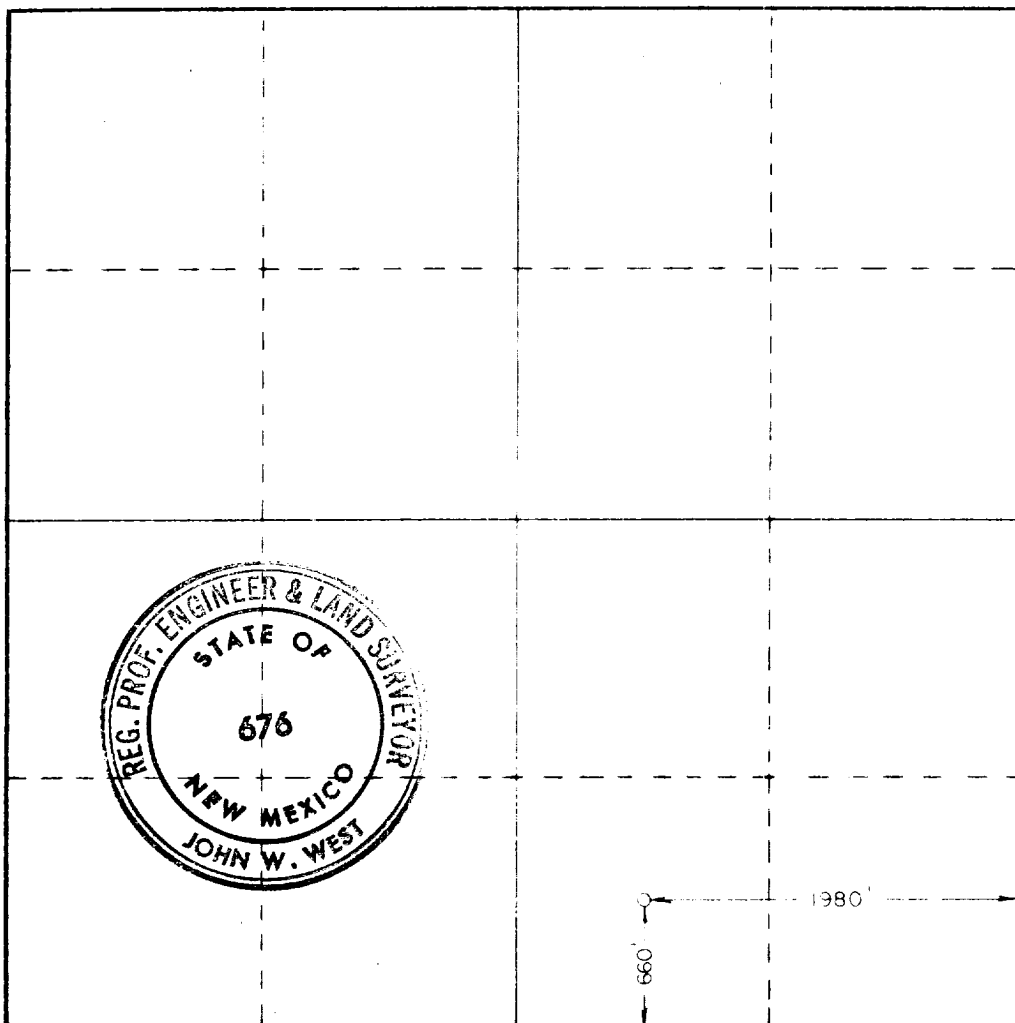
Operator El Ran, Inc.			Lease Byron		Acres 2
Section Letter O	Section 34	Township 7 South	Range 32 East	County Roosevelt	
Actual Well Location of Well: 660 feet from the South line and 1980 feet from the East line					
Ground Level Elev. 4476.5	Producing Formation SAN ANDRES		Foot CHAVEROO		Estimated Acreage: 40 Acres

1. Outline the acreage dedicated to the subject well by colored pencil or hatchure marks on the plat below.
2. If more than one lease is dedicated to the well, outline each and identify the ownership thereof (both as to working interest and royalty).
3. If more than one lease of different ownership is dedicated to the well, have the interests of all owners been consolidated by communitization, unitization, force-pooling, etc?

☒ Yes ☐ No If answer is "yes," type of consolidation **COMMUNITIZATION**

If answer is "no," list the owners and tract descriptions which have actually been consolidated. (Use reverse side of this form if necessary.) _____

No allowable will be assigned to the well until all interests have been consolidated (by communitization, unitization, forced-pooling, or otherwise) or until a non-standard unit, eliminating such interests, has been approved by the Commission.



CERTIFICATION

I hereby certify that the information contained herein is true and complete to the best of my knowledge and belief.

Name *Robert R. Karch*

Position

Agent

Company

El Ran, Inc.

Date

May 17, 1978

I hereby certify that the well location shown on this plat was plotted from field notes of actual surveys made by me or under my supervision, and that the same is true and correct to the best of my knowledge and belief.

Date Surveyed

5/13/78

Registered Professional Engineer and/or Land Surveyor

John W. West

Certificate No. **John W. West 676**
Ronald J. Eidson 3239

RECEIVED

MAY 18 1978

ENVIRONMENTAL CONSERVATION COMM.
ROBES, N. M.

113