

UNITED STATES
DEPARTMENT OF THE INTERIOR
GEOLOGICAL SURVEY

APPLICATION FOR PERMIT TO DRILL, DEEPEN, OR PLUG BACK

1a. TYPE OF WORK

DRILL ☒DEEPEN ☐PLUG BACK ☐

b. TYPE OF WELL

OIL
WELL ☒GAS
WELL ☐

OTHER

SINGLE
ZONE ☒MULTIPLE
ZONE ☐

2. NAME OF OPERATOR

Wolfson Oil Company

3. ADDRESS OF OPERATOR

3206 Republic Bank Tower Dallas, Texas

4. LOCATION OF WELL (Report location clearly and in accordance with any State requirements.*)

At surface

2310 fr N & 990 fr E

At proposed prod. zone

14. DISTANCE IN MILES AND DIRECTION FROM NEAREST TOWN OR POST OFFICE*

13 Miles S of Kenna

15. DISTANCE FROM PROPOSED*

LOCATION TO NEAREST
PROPERTY OR LEASE LINE, FT.
(Also to nearest drlg. unit line, if any)

330

16. NO. OF ACRES IN LEASE

240

17. NO. OF ACRES ASSIGNED
TO THIS WELL

40

18. DISTANCE FROM PROPOSED LOCATION*

TO NEAREST WELL, DRILLING, COMPLETED,
OR APPLIED FOR, ON THIS LEASE, FT.

19. PROPOSED DEPTH

4350

20. ROTARY OR CABLE TOOLS

Rotary

21. ELEVATIONS (Show whether DF, RT, GR, etc.)

4429 GR.

22. APPROX. DATE WORK WILL START*

October 15, 1978

23.

PROPOSED CASING AND CEMENTING PROGRAM

SIZE OF HOLE	SIZE OF CASING	WEIGHT PER FOOT	SETTING DEPTH	QUANTITY OF CEMENT
11	8 5/8	24	1780	600
7 7/8	4 1/2	9.5	4350	200

"APPROVAL TO FLARE GRANTED
WHILE DRILLING AND TESTING."

SEE ATTACHED FOR
CONDITIONS OF APPROVAL

Unless Drilling Operations have
Commenced, this drilling approval
Expires 11-24-78

RECEIVED

AUG 9 1978

U. S. GEOLOGICAL SURVEY
HOBBS NEW MEXICO

IN ABOVE SPACE DESCRIBE PROPOSED PROGRAM: If proposal is to deepen or plug back, give data on present productive zone and proposed new productive zone. If proposal is to drill or deepen directionally, give pertinent data on subsurface locations and measured and true vertical depths. Give blowout preventer program, if any.

24.

SIGNED

TITLE

Prod. Engr.

DATE

8-3-78

(This space for Federal or State office use)

PERMIT NO.

APPROVAL DATE

APPROVED BY

TITLE

CONDITIONS OF APPROVAL, IF ANY:

*See Instructions On Reverse Side

APPROVED
AS AMENDED

AUG 24 1978

A. A. Z.
ACTING DISTRICT ENGINEER

RECEIVED
AUG 29 1978
OIL CONSERVATION COMM.
BUREAU OF LAND MANAGEMENT

**NEW MEXICO OIL CONSERVATION COMMISSION
WELL LOCATION AND ACREAGE DEDICATION PLAT**

Form C-102
Supersedes C-128
Effective 1-1-65

All distances must be from the outer boundaries of the Section.

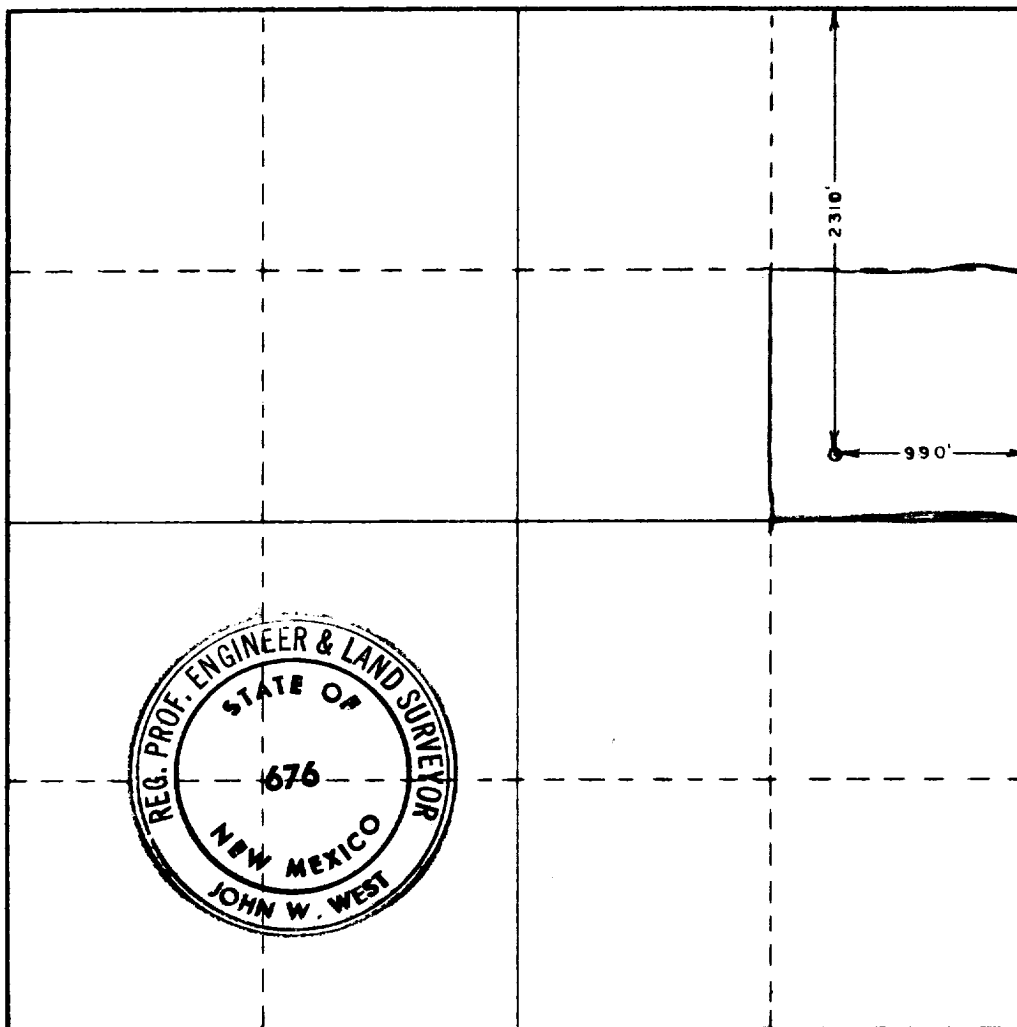
Operator Wolfson Oil Co.			Lease Mountain Federal		Well No. 2
Unit Letter H	Section 30	Township 7 South	Range 32 East	County Roosevelt	
Actual Footage Location of Well: 2310 feet from the North line and 990 feet from the East line					
Ground Level Elev. 4428.8	Producing Formation San Andres	Pool Tomahawk	Dedicated Acreage: 40 Acres		

1. Outline the acreage dedicated to the subject well by colored pencil or hachure marks on the plat below.
2. If more than one lease is dedicated to the well, outline each and identify the ownership thereof (both as to working interest and royalty).
3. If more than one lease of different ownership is dedicated to the well, have the interests of all owners been consolidated by communitization, unitization, force-pooling, etc?

☐ Yes ☐ No If answer is "yes," type of consolidation _____

If answer is "no," list the owners and tract descriptions which have actually been consolidated. (Use reverse side of this form if necessary.) _____

No allowable will be assigned to the well until all interests have been consolidated (by communitization, unitization, forced-pooling, or otherwise) or until a non-standard unit, eliminating such interests, has been approved by the Commission.



CERTIFICATION

I hereby certify that the information contained herein is true and complete to the best of my knowledge and belief.

H.G. Freedman
Name

H.G. Freedman
Position

Prod. Engr.
Company

Wolfson Oil Co.
Date

8-3-78

I hereby certify that the well location shown on this plat was plotted from field notes of actual surveys made by me or under my supervision, and that the same is true and correct to the best of my knowledge and belief.

Date Surveyed
July 26, 1978

Registered Professional Engineer and/or Land Surveyor

John W. West

Certificate No. **John W. West 676**
Ronald J. Eldon 3239



REF ID: A6291970
AUG 29 1970
GIL COLEMAN
WILSON