

UNITED STATES  
DEPARTMENT OF THE INTERIOR  
GEOLOGICAL SURVEY

## APPLICATION FOR PERMIT TO DRILL, DEEPEN, OR PLUG BACK

## 1a. TYPE OF WORK

DRILL ☒DEEPEN ☐PLUG BACK ☐

## b. TYPE OF WELL

OIL  
WELL ☒GAS  
WELL ☐

OTHER

SINGLE  
ZONE ☐MULTIPLE  
ZONE ☐

## 2. NAME OF OPERATOR

SUNDANCE OIL COMPANY

## 3. ADDRESS OF OPERATOR

Suite 510, 1776 Lincoln St., Denver, CO 80203

## 4. LOCATION OF WELL (Report location clearly and in accordance with any State requirements.)\*

At surface

660' FSL and 660' FEL

Unit P

At proposed prod. zone

Same

## 14. DISTANCE IN MILES AND DIRECTION FROM NEAREST TOWN OR POST OFFICE\*

15½ miles south of Kenna, New Mexico

## 15. DISTANCE FROM PROPOSED\*

LOCATION TO NEAREST  
PROPERTY OR LEASE LINE, FT.  
(Also to nearest drlg. unit line, if any)

660'

## 16. NO. OF ACRES IN LEASE

560'

17. NO. OF ACRES ASSIGNED  
TO THIS WELL

40

## 18. DISTANCE FROM PROPOSED LOCATION\*

TO NEAREST WELL, DRILLING, COMPLETED,  
OR APPLIED FOR, ON THIS LEASE, FT.

1320'

## 19. PROPOSED DEPTH

4350'

## 20. ROTARY OR CABLE TOOLS

Rotary

## 21. ELEVATIONS (Show whether DF, RT, GR, etc.)

4469.4' GL

## 22. APPROX. DATE WORK WILL START\*

December 26, 1978

## 23.

## PROPOSED CASING AND CEMENTING PROGRAM

| SIZE OF HOLE | SIZE OF CASING | WEIGHT PER FOOT | SETTING DEPTH | QUANTITY OF CEMENT           |
|--------------|----------------|-----------------|---------------|------------------------------|
| 11           | 8 5/8"         | 24              | 1800'         | 300 sx Econ & 100 sx Class C |
| 7 7/8        | 4 1/2"         | 10.5            | 4350'         | 300 sx 50/50 Poz             |

Well will be drilled to TD and evaluated by running logs and DST's when necessary.  
Casing will be run when logs and DST's indicate possible commercial production.

DRILLING OPERATIONS AUTHORIZED ARE  
SUBJECT TO COMPLIANCE WITH ATTACHED  
"GENERAL REQUIREMENTS"

IN ABOVE SPACE DESCRIBE PROPOSED PROGRAM: If proposal is to deepen or plug back, give data on present productive zone and proposed new productive zone. If proposal is to drill or deepen directionally, give pertinent data on subsurface locations and measured and true vertical depths. Give blowout preventer program, if any.

## 24.

SIGNED

Richard O. Dimit

TITLE Vice President, Production DATE November 9, 1978

(This space for Federal or State office use)

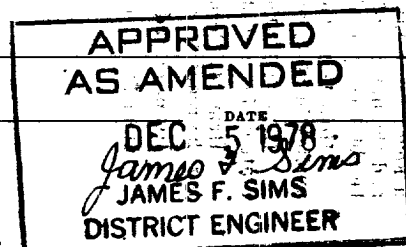
PERMIT NO.

APPROVAL DATE

APPROVED BY

TITLE

CONDITIONS OF APPROVAL, IF ANY:



\*See Instructions On Reverse Side

NEW MEXICO OIL CONSERVATION COMMISSION  
WELL LOCATION AND ACREAGE DEDICATION PLAT

Form C-102  
Supersedes C-128  
Effective 1-1-65

All distances must be from the outer boundaries of the Section

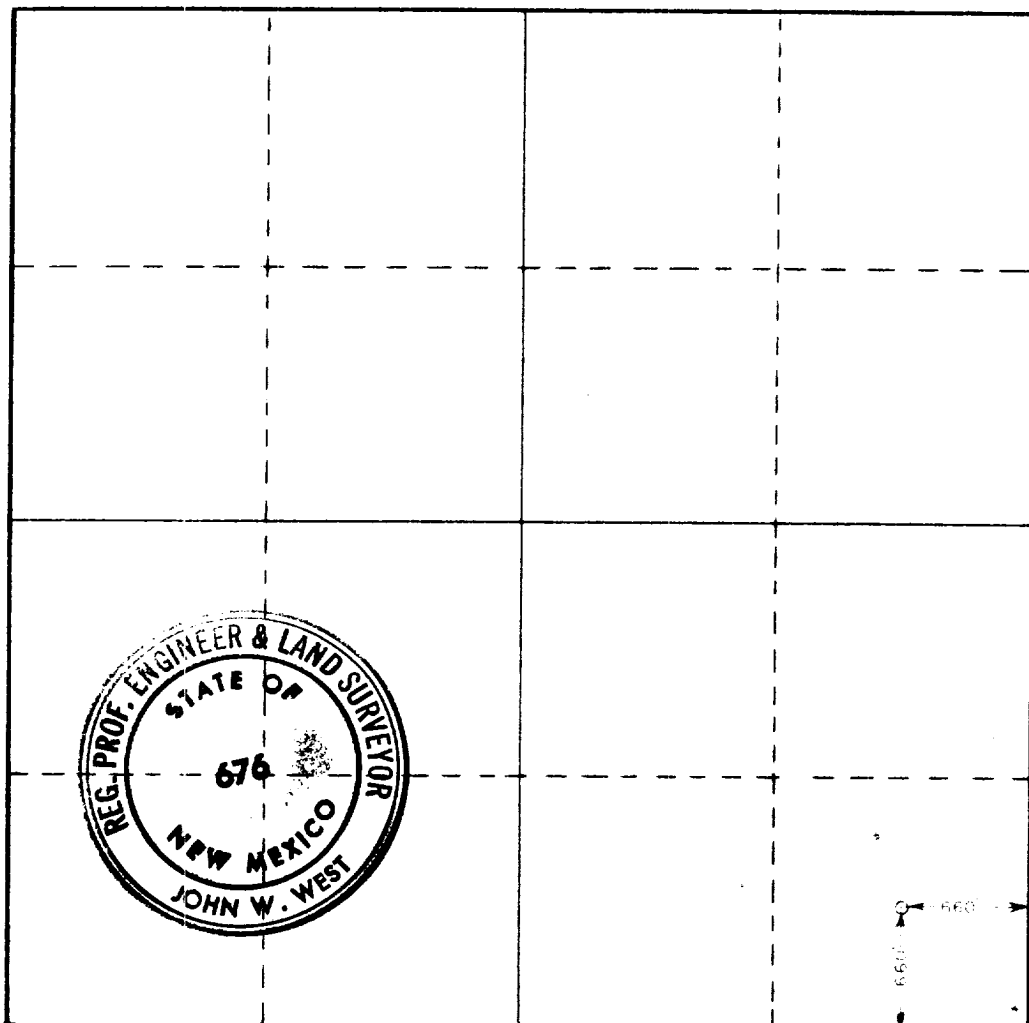
|                                                                                                                              |                                          |                            |                              |                            |                                       |                      |
|------------------------------------------------------------------------------------------------------------------------------|------------------------------------------|----------------------------|------------------------------|----------------------------|---------------------------------------|----------------------|
| Operator<br><b>SUNDANCE OIL CO.</b>                                                                                          |                                          |                            | Lease<br><b>CONE FEDERAL</b> |                            |                                       | Well No.<br><b>8</b> |
| Unit Letter<br><b>P</b>                                                                                                      | Section<br><b>31</b>                     | Township<br><b>7 SOUTH</b> | Range<br><b>32 EAST</b>      | County<br><b>ROOSEVELT</b> |                                       |                      |
| Actual Portage Location of Well:<br><b>660</b> feet from the <b>SOUTH</b> line and <b>660</b> feet from the <b>EAST</b> line |                                          |                            |                              |                            |                                       |                      |
| Ground Level Elev.<br><b>4469.4</b>                                                                                          | Producing Formation<br><b>San Andres</b> |                            | Pool<br><b>Tomahawk</b>      |                            | Dedicated Acreage:<br><b>40</b> Acres |                      |

1. Outline the acreage dedicated to the subject well by colored pencil or hatchure marks on the plat below.
2. If more than one lease is dedicated to the well, outline each and identify the ownership thereof (both as to working interest and royalty).
3. If more than one lease of different ownership is dedicated to the well, have the interests of all owners been consolidated by communitization, unitization, force-pooling, etc?

☐ Yes ☐ No If answer is "yes," type of consolidation \_\_\_\_\_

If answer is "no," list the owners and tract descriptions which have actually been consolidated (Use reverse side of this form if necessary.) \_\_\_\_\_

No allowable will be assigned to the well until all interests have been consolidated (by communitization, unitization, forced-pooling, or otherwise) or until a non-standard unit, eliminating such interests, has been approved by the Commission.



CERTIFICATION

I hereby certify that the information contained herein is true and complete to the best of my knowledge and belief.

Name  
**Richard O. Dimit**  
Position  
**Vice President, Production**  
Company  
**Sundance Oil Company**  
Date  
**November 9, 1978**

I hereby certify that the well location shown on this plat was plotted from field notes of actual surveys made by me or under my supervision, and that the same is true and correct to the best of my knowledge and belief.

Date Surveyed  
**OCTOBER 28, 1978**  
Registered Professional Engineer and/or Land Surveyor

**John W. West**  
Certificate No. **John W. West** **676**  
**Ronald J. Eidson** **3239**

Attachment to Form 9-331 C  
Application for Permit to Drill

Sundance Oil Company, #8 Cone Federal  
660' FSL and 660' FEL of Section 31, T. 7S., R. 32E.  
Roosevelt County, New Mexico

1. The geologic name of the surface information is Triassic red beds overlain by wind blown sands.
2. The estimated tops of important geologic markers are as follows:

|            |       |
|------------|-------|
| Rustler    | 1820' |
| Salado     | 1870' |
| Yates      | 2250' |
| San Andres | 3410' |
| P-1        | 4120' |
| P-2        | 4190' |
| TD         | 4350' |

3. The estimated depths at which anticipated water, oil, gas or other mineral bearing formations will be encountered are as follows:

|            |                   |
|------------|-------------------|
| Ogalala    | 150' water        |
| Salado     | 1870' salt        |
| San Andres | 3410' oil and gas |
| P-1        | 4120' oil and gas |
| P-2        | 4190' oil and gas |

4. The proposed casing program is as follows:

Surface: New 8 5/8", 24#/ft., ST&C.  
Production: New 4 1/2", 10.5#/ft., ST&C, K-55.

5. A sketch of an API Series 900 Blowout Preventer is attached. Pipe rams and blinds will be checked to 1000 PSI for 30 minutes when BOP is installed. BOP will be checked when casing is set and operated daily for checks.
6. The proposed mud program is as follows:

|                       |                      |
|-----------------------|----------------------|
| 0-1800' spud mud      | 8.5 - 9.0 lbs./gal.  |
| 1800-3500' native mud | 9.0 - 9.5 lbs./gal.  |
| 3500-T.D. salt gel    | 9.0 - 10.0 lbs./gal. |

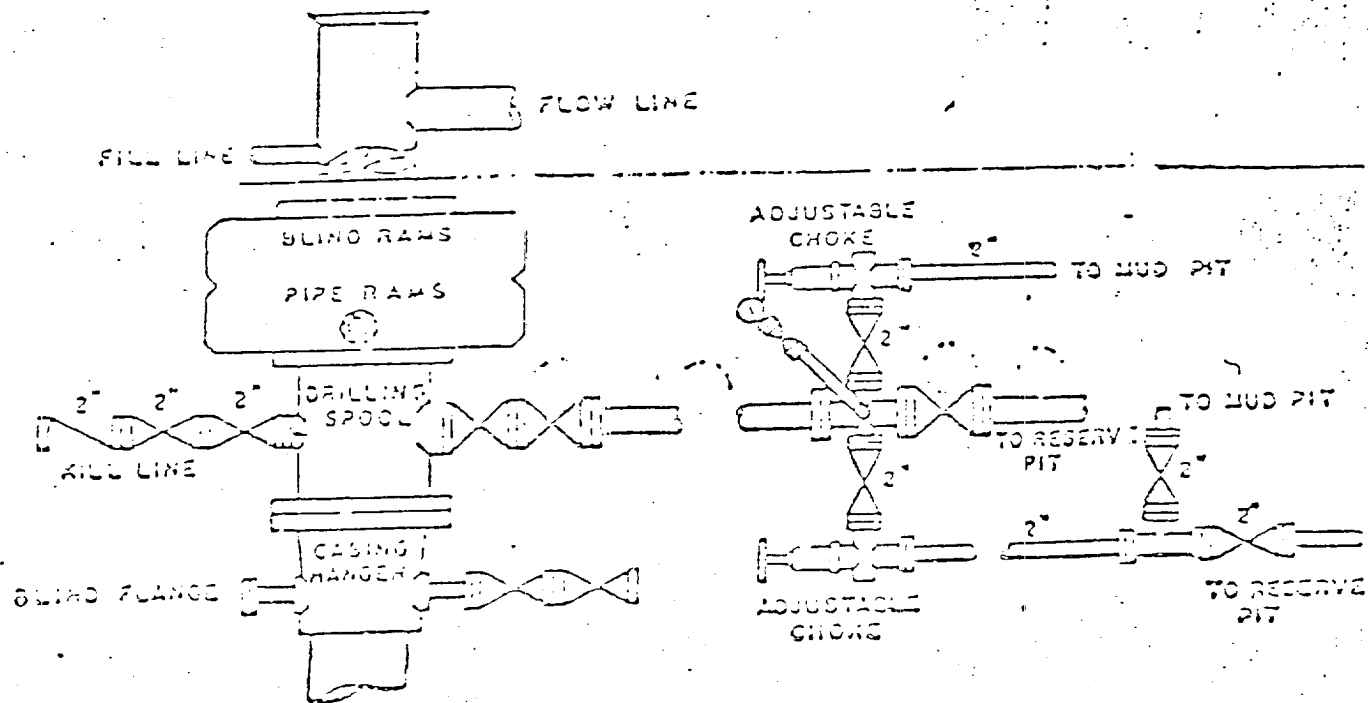
7. The auxiliary equipment to be used is:

1. Kelly cocks.
2. Floats at the bit.
3. Stabbing valve on rig floor with sub to fit drill pipe.

8. It is proposed to run 2" and 5" GR, CNL, FDC, DLL/MLL Logs from TD to 1800'.
9. No abnormal pressures or temperatures are expected to be encountered in this well.
10. The anticipated starting date for this well is December 26, 1978. Estimated duration of drilling operations is 10 to 12 days.

# BLOWOUT PREVENTER A CHOKE MANIFOLD

A.P.I. 3M-8410-RdS



ET  
ET